



1300 West Bartlett Road
 Elgin, Illinois 60120-7529
 Phone: (847) 741-5370
 Fax: (847) 622-7077

SERVICE BULLETIN

DATE: 01/21/2008

NUMBER: 0703167

SUBJECT: **SAFETY RECALL**
 Exhaust Re-Route Broom Bear CNG Sweepers
 mounted on Actera Chassis.

TO: All Dealer Principals, Service Managers,
 Parts Managers and Regional Managers

INTENT:

Install FSO 1091931 on Broom Bear CNG sweepers mounted on Sterling Actera chassis as shown in the drawing supplied with the kit.

UNITS TO SERVICE:

Broom Bear CNG sweepers mounted on Sterling Actera chassis that are covered under warranty. Application for other units must have approval of Regional Service Manager.

WARRANTY COVERAGE:

A 2 hour warranty claim can be submitted for each unit that is fitted with FSO 1091931.

SPECIAL TOOLS:

Normal hand tools, air or electric Cut-off tool and a 4" exhaust pipe expander

PARTS REQUIRED:

Part No.	Qty.	Description
1091931	1	FSO Exhaust Kit

PARTS AVAILABILITY:
 01/15/08

PROCEDURE:

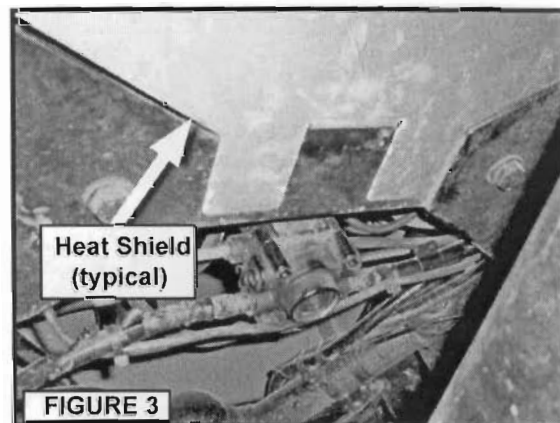
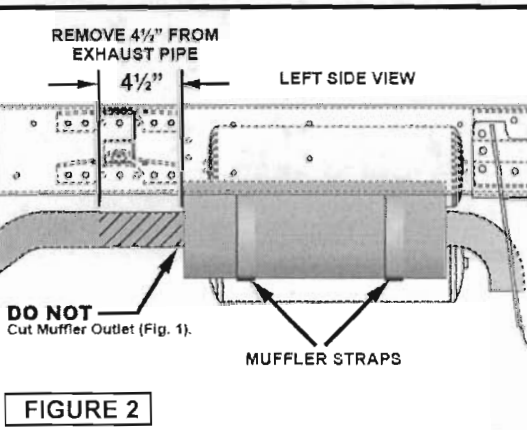
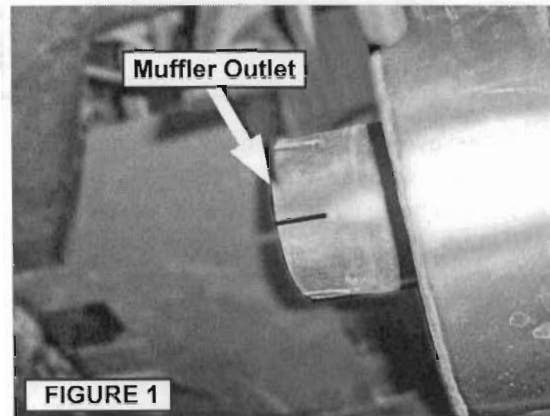
- Remove hydraulic valve cover.
- Remove tailpipe from muffler outlet (Fig. 1&6).
- Resize muffler outlet connection using a suitable expander or other tool (Fig. 1).
- Loosen muffler straps and exhaust pipe clamp.
- Slide muffler rearward.
- Cut 4-1/2" from end of exhaust pipe (Fig. 2).

NOTE: It may be easier to remove Intermediate exhaust pipe to cut the pipe.

- Re-install muffler and tighten straps.
- Install heat shield to the chassis cross member as shown using hardware supplied in the kit.

NOTE: There are two types of chassis cross members. Fig. 3 is a direct bolt-in to existing holes. Others (not shown) must be drilled for hardware.

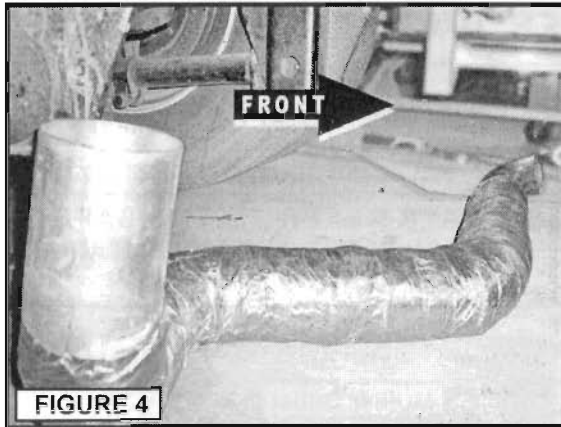
ALWAYS REFER TO THE SAFETY SECTION IN THE OPERATOR MANUAL BEFORE STARTING WORK.



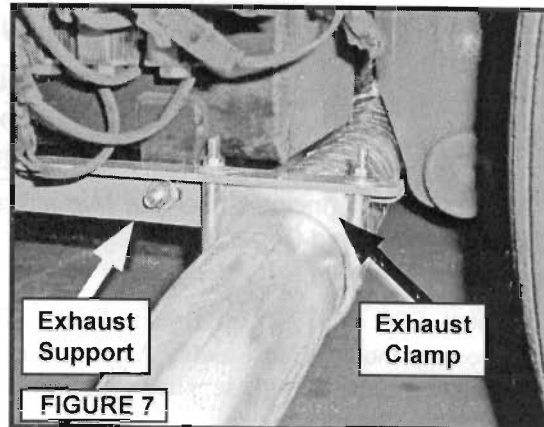
Operators and maintenance personnel should frequently review Elgin's website for Technical Tips and Updates regarding the operation and maintenance of Elgin products. (www.elginsweeper.com)

PROCEDURE: (Continued)

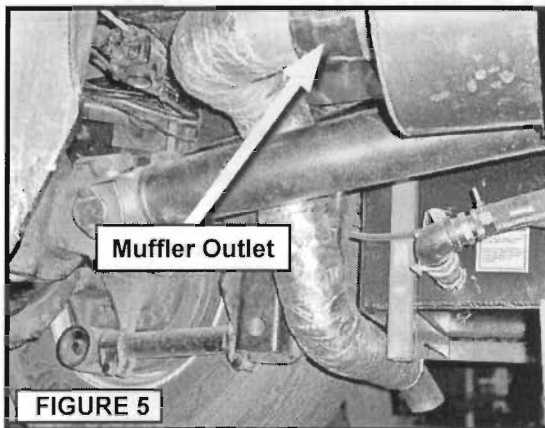
- Position FSO exhaust pipe beneath chassis with the outlet facing the front of the truck. (Fig. 4)



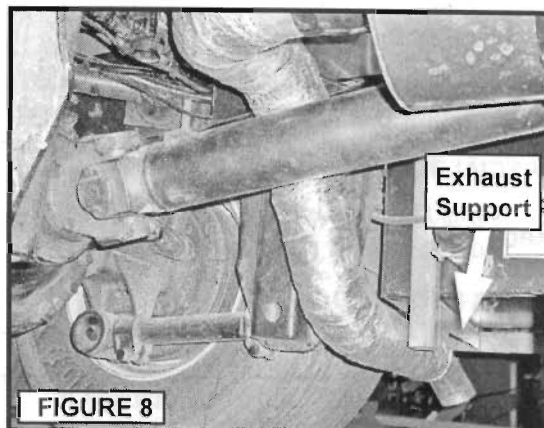
- Lift pipe into position shown and install Exhaust clamp (Fig. 7).



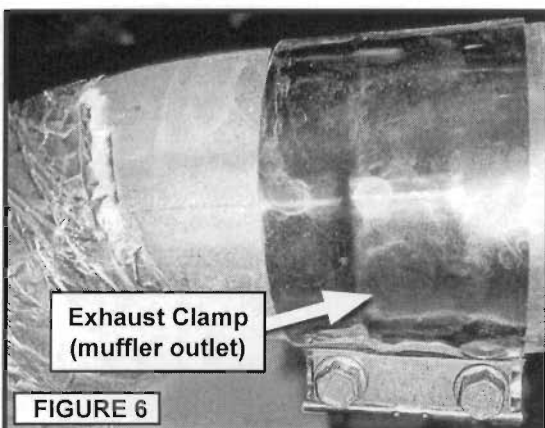
- Lift Pipe over driveshaft, rotate the pipe so pipe inlet aligns with the muffler outlet. (Exhaust outlet will be just below hydraulic valve cover and in front of the Left Rear Wheel (Fig. 5).



- Confirm exhaust pipe will not contact driveshaft or other sweeper components and tighten exhaust clamps securely (Fig. 6, 7 and 8).



- Engage new exhaust pipe and clamp it to the muffler outlet. Leave clamp loose until final alignment is complete (Fig. 6).
- Attach the Exhaust Support to the Hydraulic Tank Bracket. (Fig. 7)



- Re-install hydraulic valve cover (Fig. 9).
- Start sweeper engine and confirm that there are no exhaust leaks or component interference. Repair leaks, adjust as necessary to eliminate interference before returning sweeper to service.

