



THIS DOCUMENT AND THE CONTENTS DISCUSSED HEREIN ARE THE CONFIDENTIAL AND PROPRIETARY INFORMATION OF NEW FLYER INDUSTRIES CANADA ULC AND NEW FLYER OF AMERICA INC. AND ARE DISCLOSED BY NEW FLYER IN CONFIDENCE. THIS DOCUMENT AND THE CONTENTS HEREIN ARE NOT TO BE DISCLOSED BY THE INTENDED RECIPIENT WITHOUT THE PRIOR WRITTEN AUTHORIZATION OF NEW FLYER. ANY UNAUTHORIZED DISCLOSURE, REPRODUCTION OR OTHER DISTRIBUTION OF THIS DOCUMENT OR INFORMATION IS STRICTLY PROHIBITED AND MAY RESULT IN ACTION BEING TAKEN AGAINST THE PARTY MAKING THE UNAUTHORIZED DISCLOSURE. THIS DOCUMENT AND ALL COPIES HEREOF MUST BE RETURNED TO NEW FLYER UPON REQUEST.

INSTRUCTION TO SERVICE ITS: 3559

SECTION: 231 Cooling System	MODEL: <input type="checkbox"/> 30FT <input type="checkbox"/> 35FT <input checked="" type="checkbox"/> 40FT <input type="checkbox"/> 60FT <input checked="" type="checkbox"/> DSL <input type="checkbox"/> CNG <input type="checkbox"/> LNG <input type="checkbox"/> ELEC	TYPE: <input type="checkbox"/> HIGH FLOOR <input checked="" type="checkbox"/> LOW FLOOR	WRITTEN BY: Bik Dhaliwal
---------------------------------------	---	---	---------------------------------

OBJECTIVE/SUBJECT:

Remove & replace hydraulic and power steering pump lines

PROCEDURE:

1. Turn the main battery disconnect switch to the "OFF" position.
 2. Raise coach in accordance with the New Flyer Service Manual or use a service pit.
 3. Open the rear engine access door.
- ☞ NOTE: Place a drip tray underneath at the ends of the hydraulic and P/S lines (NF PN 307432 & 307339 respectively) and hydraulic manifold to catch any fluid runoff.**
4. Undo clamps retaining the hydraulic line (NF PN 307432). Store hardware for reinstallation.
 5. Disconnect the attached hydraulic line that runs to the hydraulic manifold.
 6. Undo clamps retaining the power steering lines (NF PN 307339). Store hardware for reinstallation.
 7. Disconnect the attached power steering line that runs to the hydraulic manifold.
 8. Remove the existing hydraulic and power steering lines bracket and replace with new bracket (NF PN 331369) reusing existing hardware to secure. Refer to Figure 1.

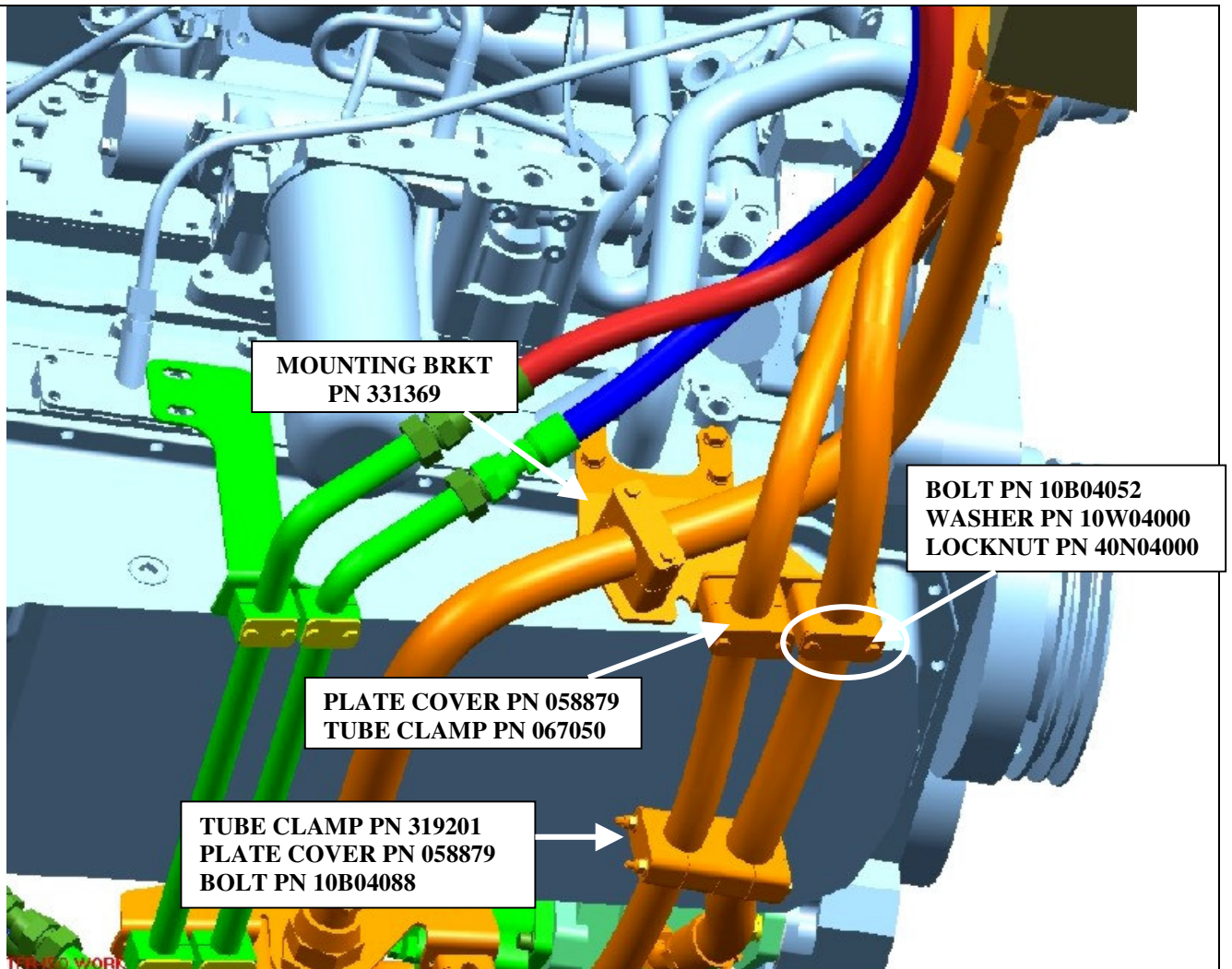


Figure 1 – Mounting Bracket Installation

9. Position the new hydraulic line (NF PN 331373). Ensure the installed line has no kinks or potential chaffing points. Connect the fan pump side first and then proceed to route it to the hydraulic manifold. **Torque both ends to 65-70 FT-LBS.**
10. Position the new power steering line (NF PN 331374). Ensure the installed line has no kinks or potential chaffing points. Connect the power steering pump side first and then proceed to route it to the hydraulic manifold. **Torque both ends to 65-70 FT-LBS.**
11. Add tube clamps (NF PN 067050) to the bracket attached in Step 8. Refer to figure 1 for hardware.
12. Add second set of tube clamps (NF PN 319201) to the lines as shown in Figure1.

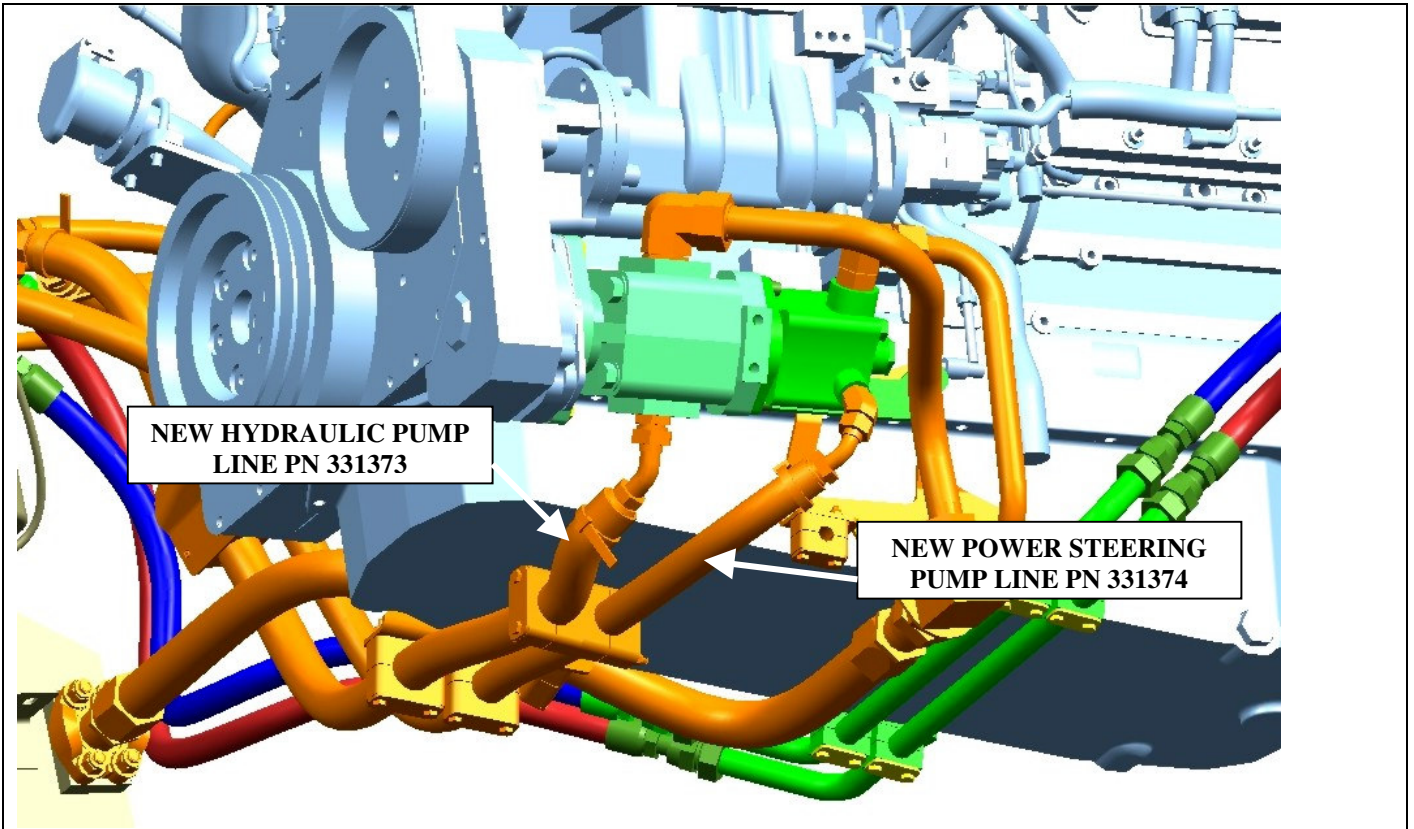


Figure 2A – Line Installation

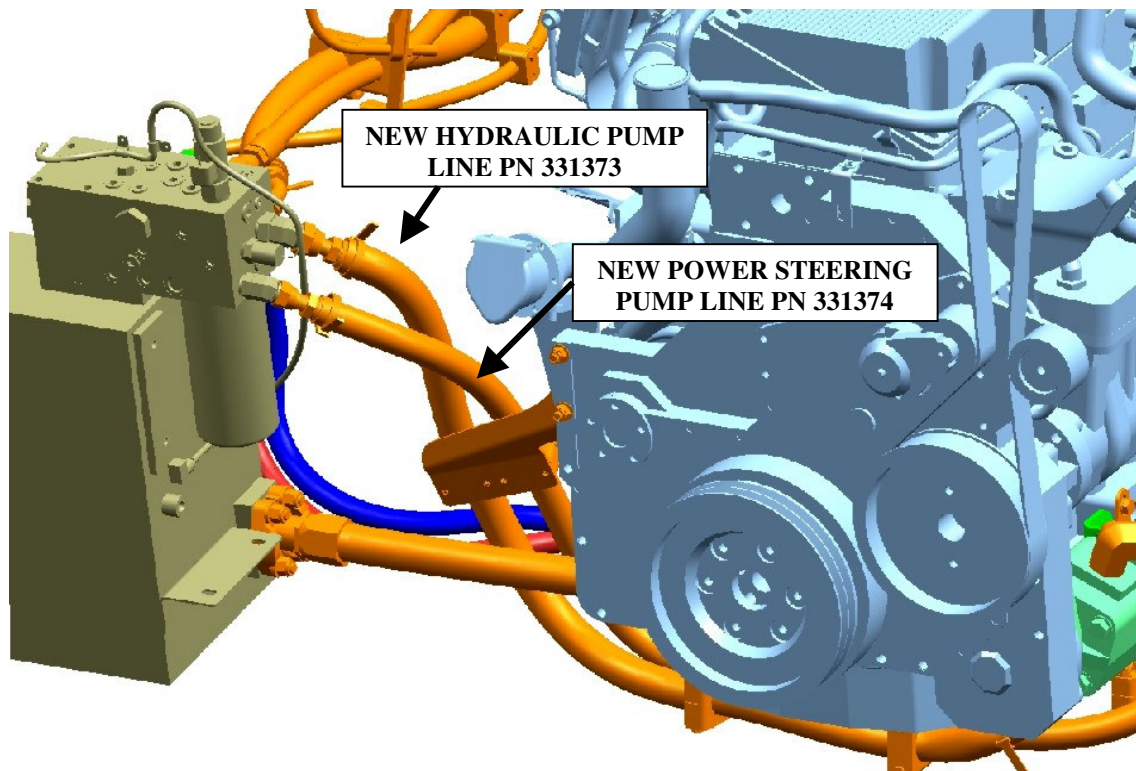


Figure 2B – Line Installation Cont'd



13. Remove the drip tray.
14. Close the rear engine access door.
15. If necessary, lower coach in accordance with the New Flyer Service Manual.
16. Turn the main battery disconnect switch to the “ON” position.
17. Run the coach for 5 minutes and then park coach.
18. Open the rear engine access door and inspect the newly installed lines for leaks. Torque lines to the appropriate values as previously listed.
19. Close the rear engine access door.
20. Run coach as per normal operation.



LABOUR ESTIMATE				
	Operation	Men	Hours	Labour Time M X HR
1	Remove & replace hydraulic and power steering pump lines	1	1.75	1.75

PARTS REQUIRED					
Item	Part Number	Description	Qty. per Coach	Units	Notes
1	058879	CLAMP COVER PLATE	4	EA	
2	067050	1.38-IN OD LHA CLAMP	2	EA	
3	10w04000	1/4-IN FLAT WASHERS	2	EA	
4	331369	BRACKET	1	EA	
5	331373	GH195-12 HOSE	1	EA	
6	331374	FC510-10 HOSE	1	EA	
7	319201	40-MM OD LHA CLAMP	2	EA	
8	40n04000	1/4-IN HEX LOCK NUT	2	EA	
9	10b04052	1/4-IN BOLT X 3.25 LG	4	EA	
10	10b04088	1/4-IN BOLT X 5.50 LG	2	EA	