



THIS DOCUMENT AND THE CONTENTS DISCUSSED HEREIN ARE THE CONFIDENTIAL AND PROPRIETARY INFORMATION OF NEW FLYER INDUSTRIES CANADA ULC AND NEW FLYER OF AMERICA INC. AND ARE DISCLOSED BY NEW FLYER IN CONFIDENCE. THIS DOCUMENT AND THE CONTENTS HEREIN ARE NOT TO BE DISCLOSED BY THE INTENDED RECIPIENT WITHOUT THE PRIOR WRITTEN AUTHORIZATION OF NEW FLYER. ANY UNAUTHORIZED DISCLOSURE, REPRODUCTION OR OTHER DISTRIBUTION OF THIS DOCUMENT OR INFORMATION IS STRICTLY PROHIBITED AND MAY RESULT IN ACTION BEING TAKEN AGAINST THE PARTY MAKING THE UNAUTHORIZED DISCLOSURE. THIS DOCUMENT AND ALL COPIES HEREOF MUST BE RETURNED TO NEW FLYER UPON REQUEST.

**INSTRUCTION TO SERVICE ITS: 3459**

SECTION: 231  COOLING SYSTEMS	MODEL: <input type="checkbox"/> 30FT <input type="checkbox"/> 35FT <input checked="" type="checkbox"/> 40FT <input type="checkbox"/> 60FT  <input checked="" type="checkbox"/> DSL <input type="checkbox"/> CNG <input type="checkbox"/> LNG <input type="checkbox"/> ELEC	TYPE: <input type="checkbox"/> HIGH FLOOR  <input checked="" type="checkbox"/> LOW FLOOR	WRITTEN BY: Bik Dhaliwal
--	---	---	-----------------------------

OBJECTIVE/SUBJECT:

Install hydraulic line PN 323837 in place of PN 279951

PROCEDURE:

1. Turn the main battery disconnect switch to the "OFF" position.
  2. Raise coach in accordance with the New Flyer Service Manual or use a service pit.
  3. Open the rear engine access door.
- ☞ **NOTE:** Place a drip tray underneath at the ends of the hydraulic hose (NF PN 279951) and hydraulic manifold to catch any fluid runoff.
4. Remove the existing hydraulic line (NF PN 279951) on the coach and the attached hydraulic line that runs to the hydraulic manifold.
  5. Install a 45 degree elbow (NF PN 8410045) on the hydraulic manifold as depicted on Figure 1C.

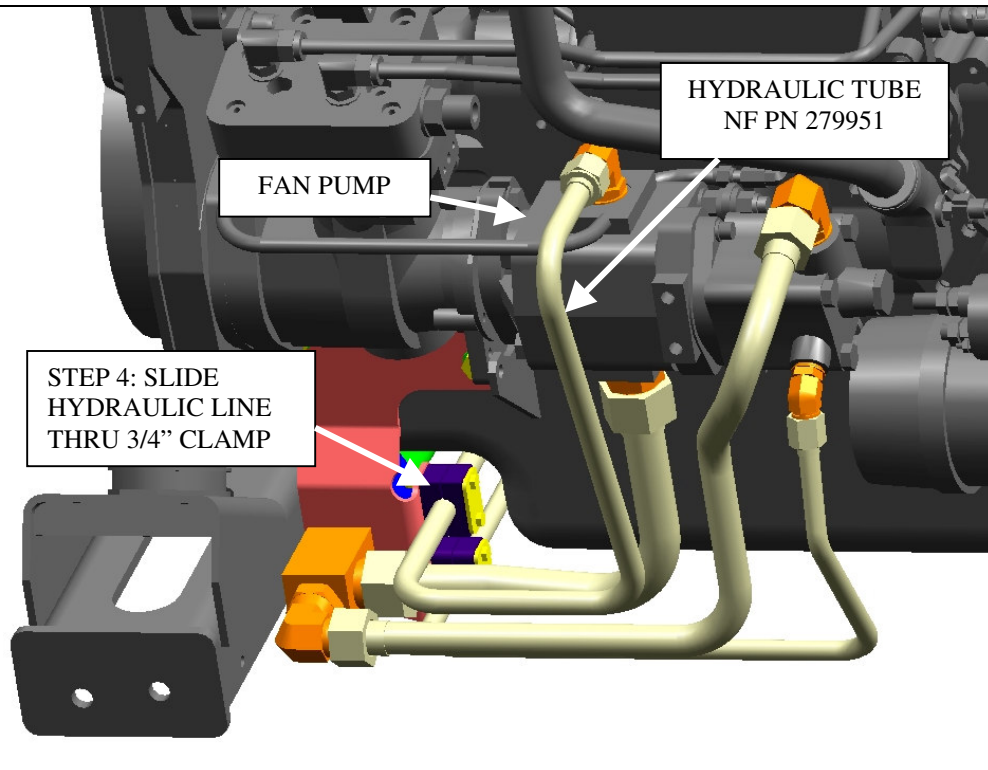


Figure 1A – Hydraulic Tube Assembly

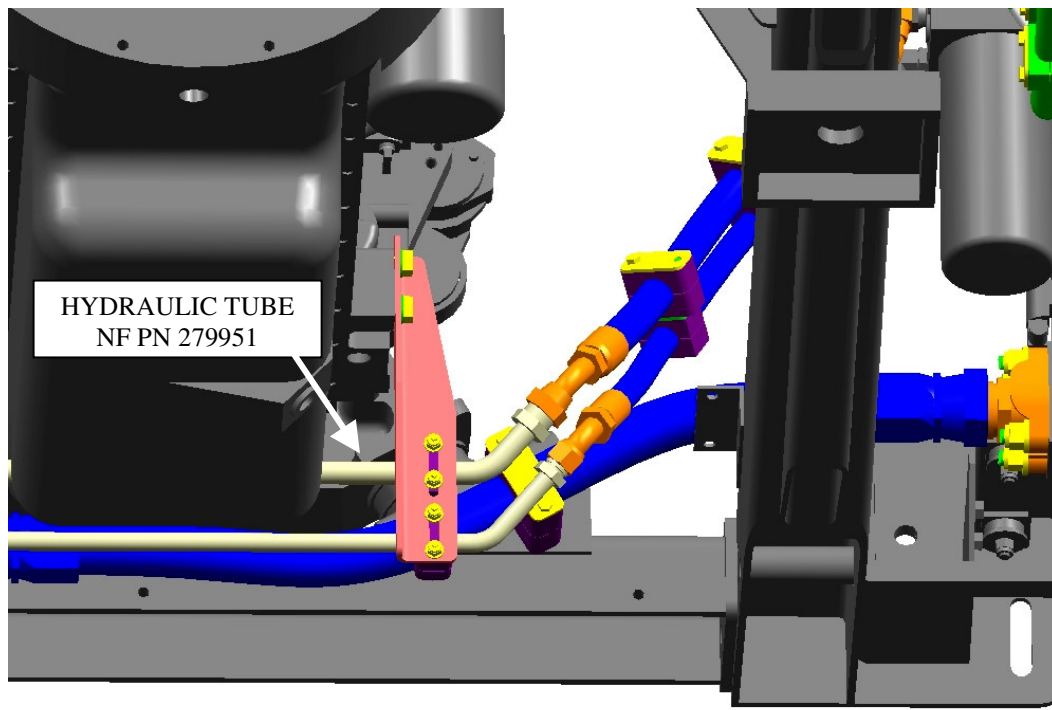
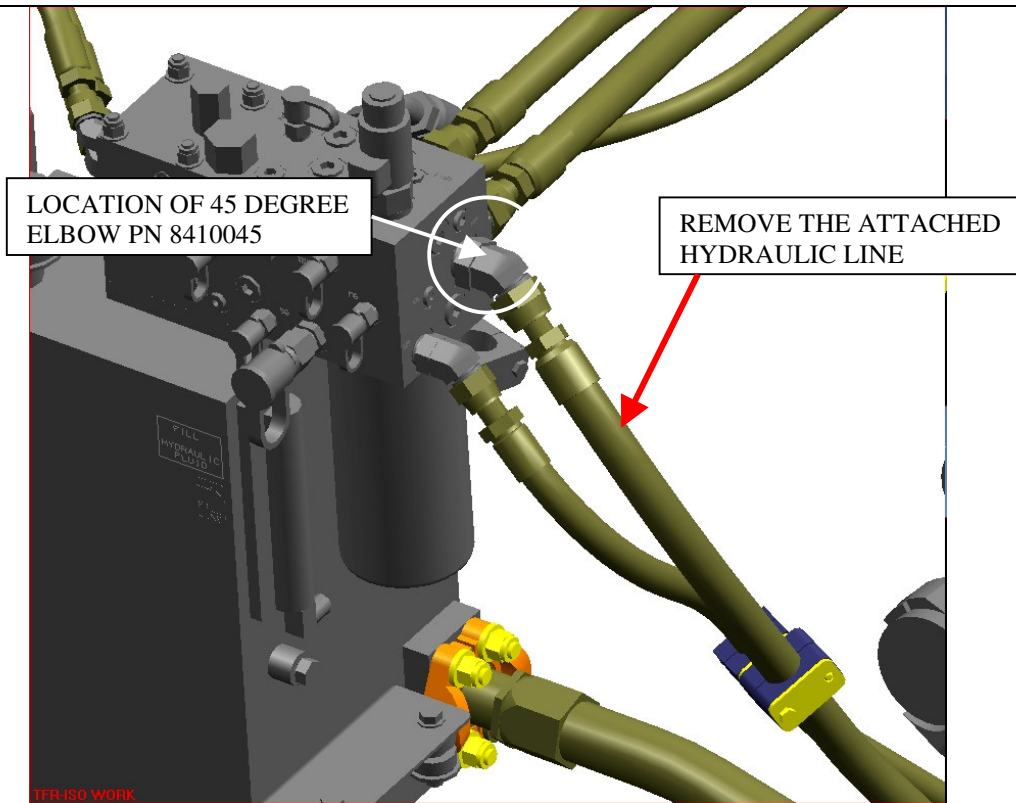
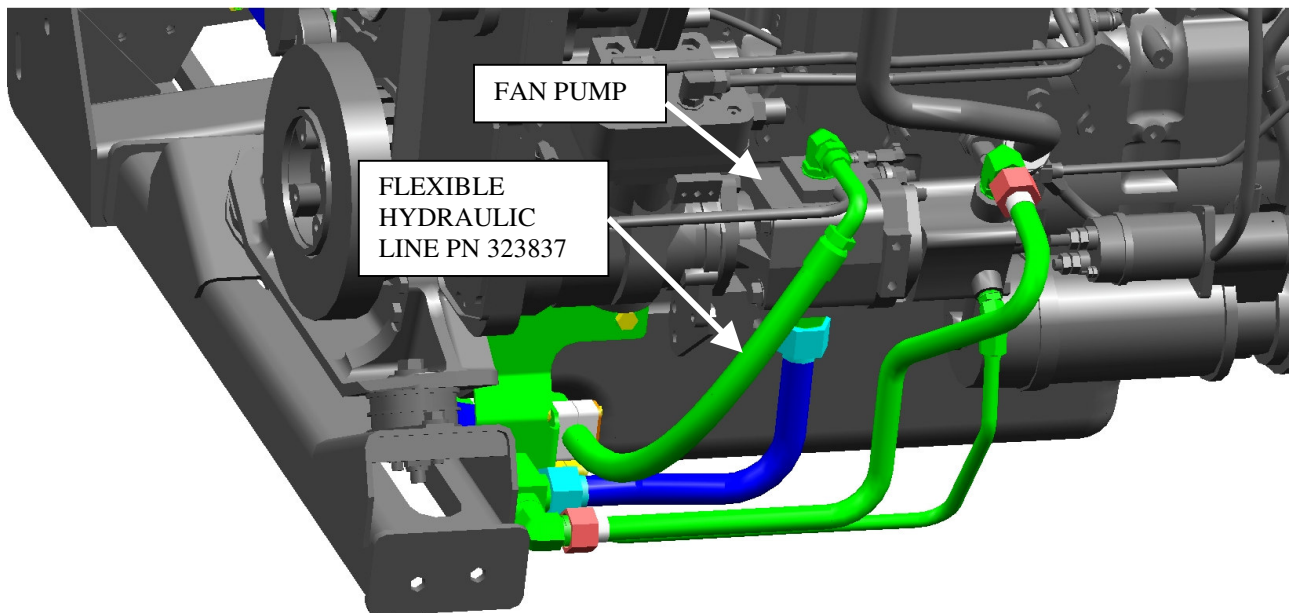


Figure 1B – Hydraulic Tube Assembly

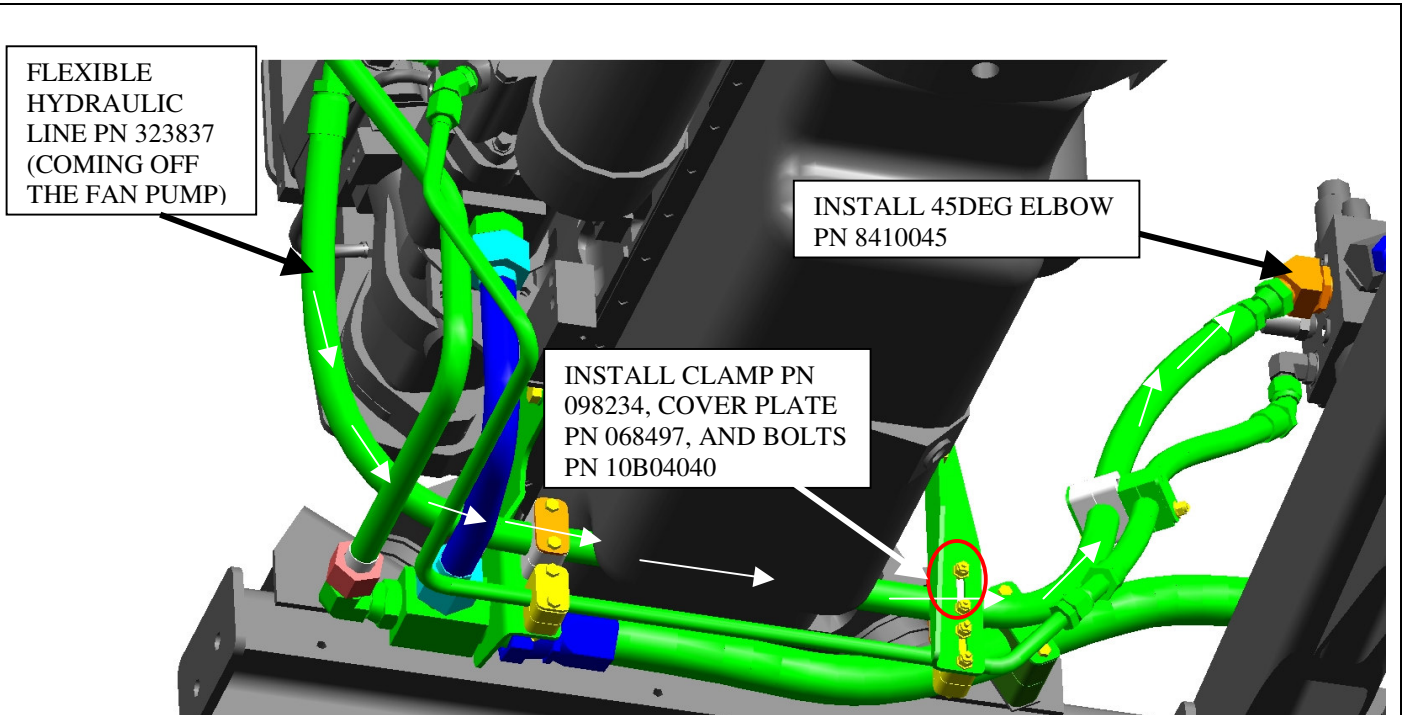


**Figure 1C – Hydraulic Tube Assembly**

- Slide the new hydraulic line (NF PN 323837) in through the 3/4" clamps and in the same position of the replaced line.



**Figure 2A – New Line Installation**



**Figure 2B – New Line Installation: Routing**

7. Connect the fan pump end first and **torque it to 79-87Ft-Lbs. Mark with a torque stripe. Use a backing wrench as necessary to hold the line in position and avoid any twisting of the line.**
  8. Connect the opposite end to the flexible fan pump pressure line (NF PN 323837) and **torque it to 79-87Ft-Lbs. Mark with a torque stripe. Use a backing wrench as necessary to hold the line in position and avoid any twisting of the line.**
  9. Install the clamp (NF PN 098234), cover plate (NF PN 068497), and hardware (NF PN 10B04040) as depicted in Figure 2B.
- 👉 **NOTE: Top off fluid as necessary and remove drip tray.**
10. If necessary, lower coach in accordance with the New Flyer Service Manual.
  11. Turn the main battery disconnect switch to the “ON” position.
  12. Run coach for approximately 5 minutes and then park coach.
  13. Open the rear engine access door and inspect the newly installed hydraulic line (NF PN 323837) for leaks. Torque lines to the appropriate values as previously listed.
  14. Close the rear engine access door.
  15. Operate coach as per normal operations.



<b>LABOUR ESTIMATE</b>				
	Operation	Men	Hours	Labour Time M X HR
1	Remove and replace Hydraulic line	1	1.75	1.75

<b>PARTS REQUIRED</b>					
Item	Part Number	Description	Qty. per Coach	Units	Notes
1	323837	HOSE – ASSY GH 195-12 FL66.0	1	EA	
2	8410045	ELBOW 45 – 3/4 TUBE	1	EA	
3	098234	CLAMP, TUBE 30 MM	2	EA	
4	068497	PLATE CLAMP COVER GR 4	2	EA	
5	10B04040	BOLT HEX 1/4" 20 UNC X 2 1/2" LG	2	EA	
6	40N04000	NUT, LOCK NYLON 1/ 4" – 20 UNC	2	EA	