

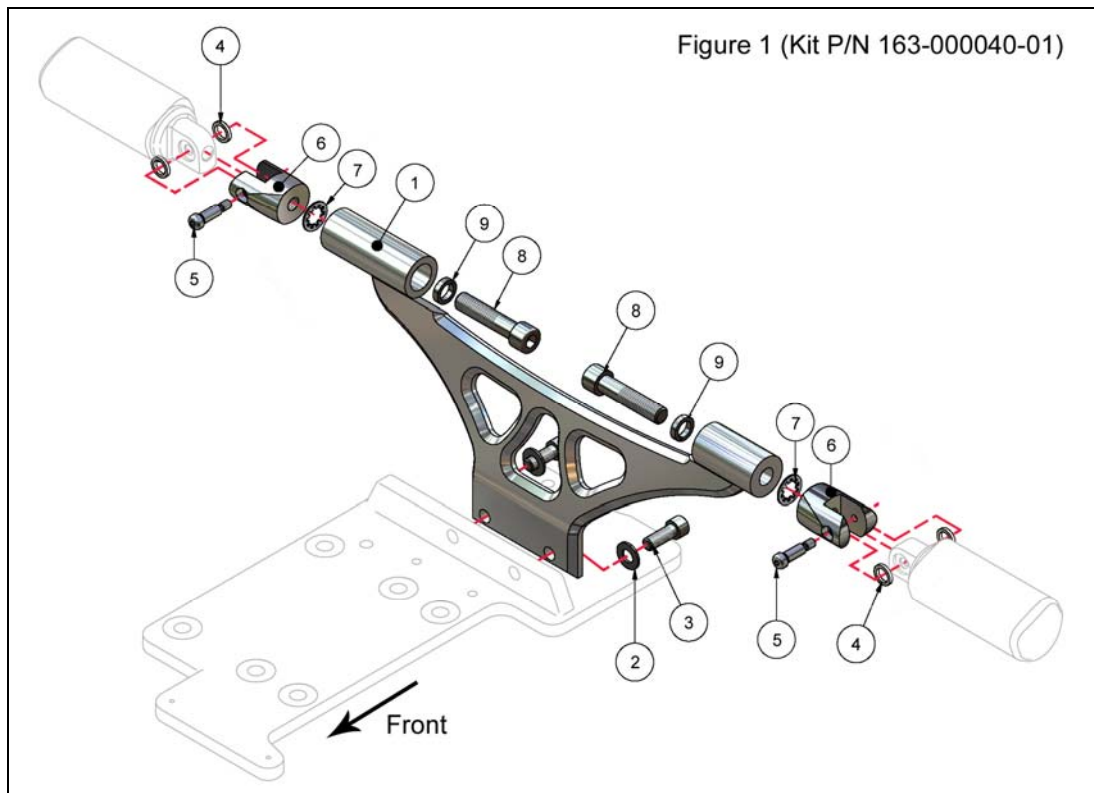


## NHTSA SAFETY RECALL

### 2008 RIDGEBACK WHISKER BAR Recall #08E-022

**IDENTIFICATION:** 2008 Ridgeback models with an installed whisker bar kit P/N 163-000040-01.

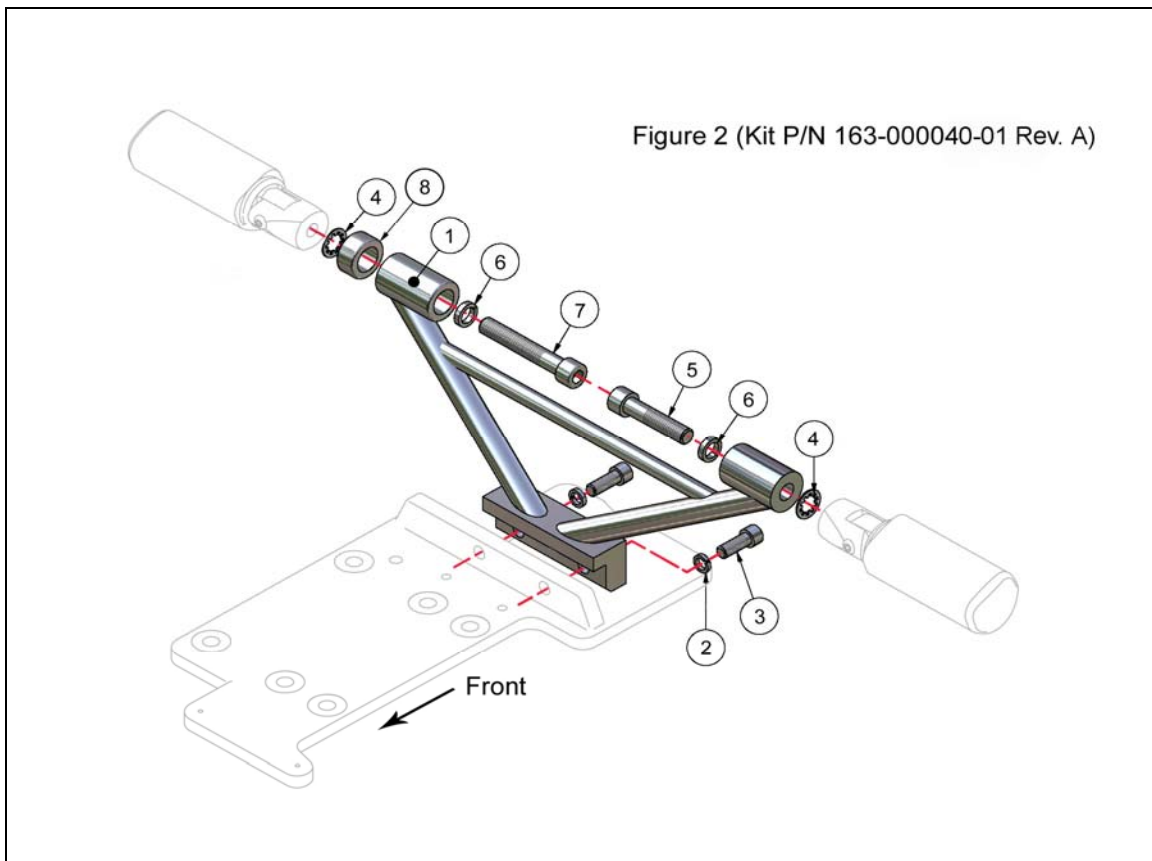
**ACTION:** Remove existing whisker bar and replace with kit P/N 163-000040-01 Rev. A.



#### REMOVAL

**NOTE:** Follow steps 1-4 and use *Figure 1* above to remove and disassemble the existing whisker bar assembly.

1. Remove the screws (**item 3**) and washers (**item 2**). Remove the whisker bar assembly from the left side of the motorcycle. Discard the screws and washers (**items 2 and 3**).
2. Remove the screws (**item 8**) and washers (**items 7 and 9**) from the existing whisker bar assembly. Discard the screws and washers (**items 7, 8 and 9**).
3. Keep footpeg assembly (**items 4, 5, 6**) intact for use on the new whisker bar.
4. Return the old whisker bar (**item 1**) to Big Dog Motorcycles.



## INSTALLATION

**NOTE:** Follow steps 5-8 and use **Figure 2** above to assemble and install the new whisker bar.

5. Insert the washer (**item 6**) and screw (**item 5**) into the left side of the whisker bar (**item 1**). Place the internal tooth washer (**item 4**) between the left footpeg assembly and whisker bar. Thread the screw (**item 5**) into the footpeg assembly. Make sure the footpeg is properly clocked before tightening. Tighten screw to 66 ft•lbs torque.
6. Insert the washer (**item 6**) and screw (**item 7**) into the right side of the whisker bar (**item 1**). Place the spacer (**item 8**) and internal tooth washer (**item 4**) between the

right footpeg assembly and whisker bar. Thread the screw into the footpeg assembly. Make sure the footpeg is properly clocked before tightening. Tighten screw to 66 ft•lbs torque.

7. Carefully insert the new whisker bar assembly through the left side of the motorcycle and into position.
8. Place washers (**item 2**) onto screws (**item 3**) and apply Loctite 2440 to the screw threads. Insert screws through the rear of the whisker bar and into the frame plate. Tighten screws to 50 ft•lbs torque.

Enter a Warranty Claim for this procedure through AWS using Labor Op **R08E-022**.

If further assistance is necessary, contact Big Dog Motorcycles Technical Support at 316-219-7000.