



November 3, 2009

Recall 08V-648

This notice is sent to you in accordance with the requirements of the National Traffic and Motor Vehicle Safety Act. Thomas Built Buses, Inc. has decided that certain Model Year 2005 through 2009 Minotour school and non school buses manufactured between September 1, 2004 and November 26, 2008 fail to comply with the requirements of Federal Motor Vehicle Safety Standard No. 110, "Tire Selection and Rims". The tire information placard is incorrect which may lead to tire overloading and possibly cause tire failure which may result in a vehicle crash. These units are identified on the enclosed postcard (Form PSD 304).

You should immediately contact your Thomas Built Buses dealer for an appointment to have your vehicle modified. Thomas will remedy this defect without charge. The remedy will consist of installing new labels. It will take approximately .1 to install the new label. To arrange for installation of the new label, contact your local Thomas Built Buses dealer. After the repair is made, please complete each postage paid card separately and return it to Thomas Built Buses to verify completion.

In addition to being used to verify repair completion, the postcard must be completed and returned if the vehicle does not need repair, if you no longer own the vehicle, or if the vehicle identified on the postcard has been exported, stolen, or destroyed/totaled. Federal law requires that any vehicle lessor receiving the recall notice must forward a copy of this notice to the lessee within 10 days.

If you have had your vehicle repaired due to this defect prior to receipt of this notice and you have incurred any costs, you may be eligible for reimbursement. For further information, please contact the Customer Support Office at (336)889-4871, 8 a.m. to 5 p.m. eastern standard time Monday through Friday. To find a dealer in your area please go to www.thomasbus.com.

If the noncompliance defect is not remedied without charge and within a reasonable time, which is not longer than 60 days after you tender the vehicle for repair, also please contact the Customer Support Office at (336)889-4871. You may also submit a complaint to the Administrator, National Highway Traffic Safety Administration, 1200 New Jersey Avenue, S.E., Washington, DC 20590, or phone the Vehicle Safety Hotline at 1-888-327-4236 (TTY: 1-800-424-9153) or go to <http://www.safercar.gov>. If your vehicle is involved in the Canadian portion, you may notify the Manager, Recall and Public Compliance, Road and Motor Vehicle Traffic Safety Branch, Transport Canada, Ottawa, Ontario or phone (613)-993-9851.

Sincerely,

Tracy Sauerbrey
Warranty/Recall Department

Enclosure

Sincerely,

Tracy Sauerbrey
Warranty/Recall Department

3. Remove existing clear Thomas Data Label Cover. Start in one corner as shown in **Figure 4**.
4. Carefully, remove "VOID" remains with razor blade. **Figure 5**

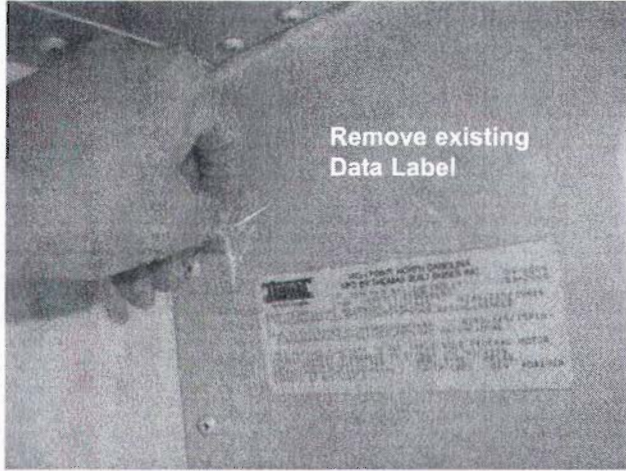


Figure 4

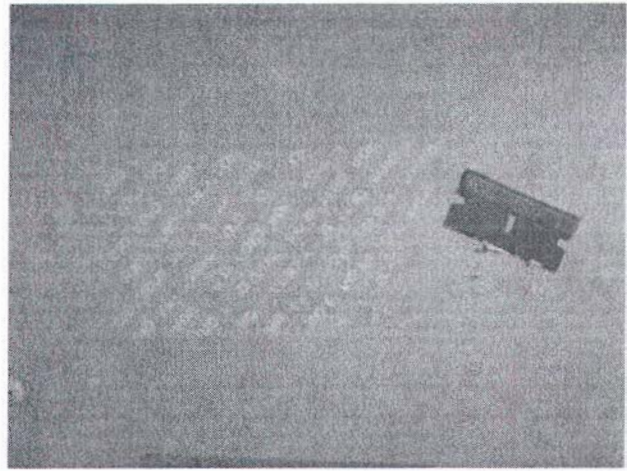


Figure 5

5. Remove any leftover adhesive on Bulkhead with an adhesive remover.
6. Clean bulkhead with a general purpose cleaner; wipe dry.

Note: In steps 7 & 8, you are instructed to install the Thomas Data Label , State Specifications Label and the Tire & Loading Labels. Due to limited space, install these labels within 1/8" of each other.

7. Install the new Thomas Data Label in the area shown in **Figure 6**.
8. Install the new State Specifications Label (if required).
9. Install the new Tire & Loading Label 1/8" above the Thomas Data Label. **Figure 7**

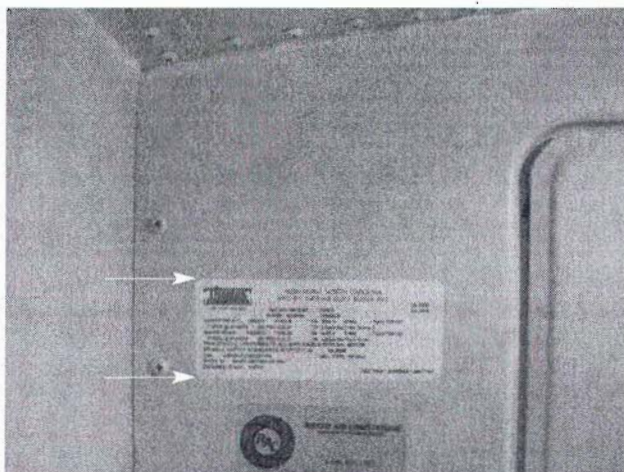


Figure 6

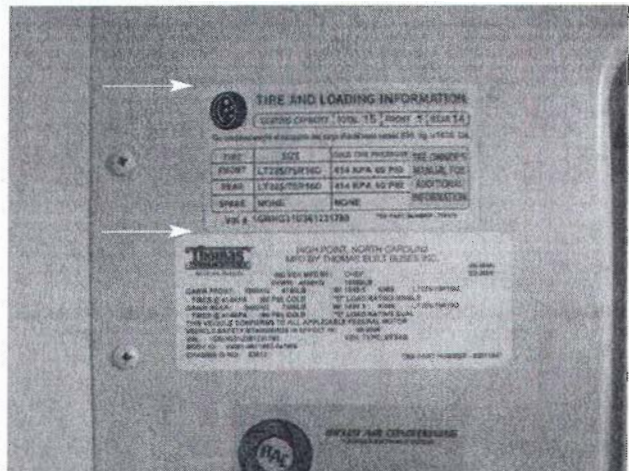


Figure 7

9. Cover all new labels with the new Clear Acetate Label Cover(s). **Figure 8.**

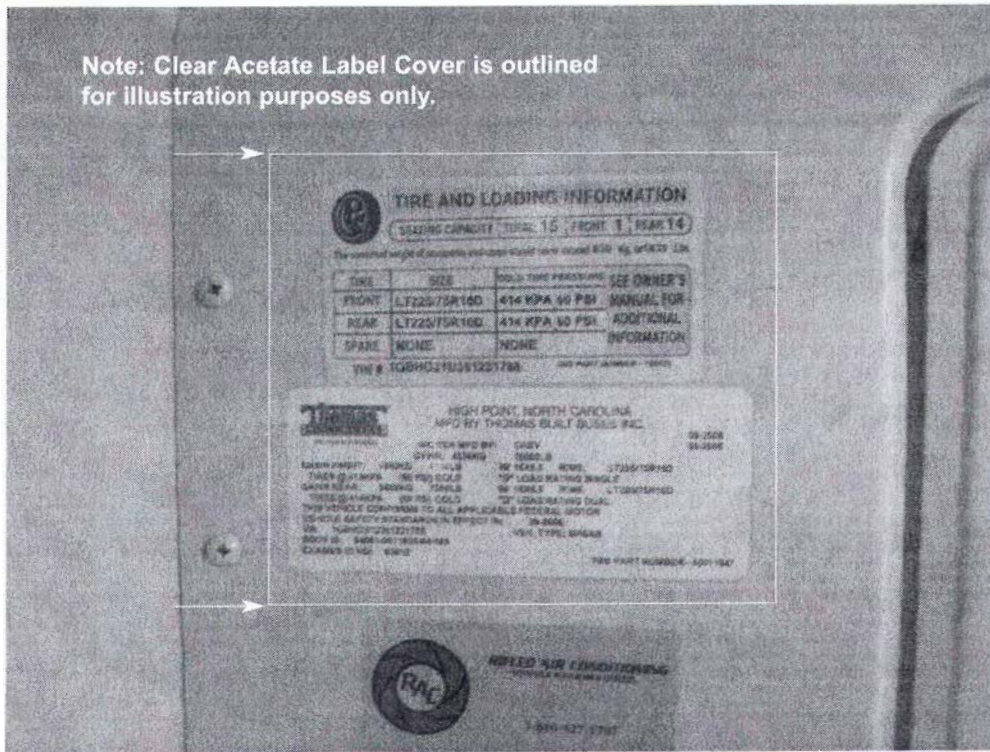


Figure 8