



YAMAHA MOTOR CORPORATION, USA
6555 KATELLA AVENUE, CYPRESS, CALIFORNIA 90630-5101 714/761-7300

September 9, 2008

08V-461
(6 Pages)

Via Federal Express and Facsimile (202-366-7882)
Chief Administrator
National Highway Traffic Safety Administration
Associate Administrator for Safety Assurance
400 Seventh Street, SW
Washington, DC 20590

**Regarding: 2007 Model Year XF50 and XC50 Connecting Rod
Factory Modification Campaign**

Dear Sir/Madam:

The purpose of this correspondence is to provide preliminary information required by 49 CFR 573 and the National Traffic and Motor Vehicle Safety Act regarding a defect notification campaign we are initiating. We are attaching a current draft of the dealer technical bulletin for informational purposes. We will send under separate cover the owner's notification letter for Agency review/ approval prior to close of business next week. The envelope format has previously been approved by the Agency for prior campaigns.

1. **Manufacturers Name:** Yamaha Motor Taiwan Trading Company, Ltd.
15FI, No 44, Sec 2, Chung Shan N Road
Taipei 10448, Taiwan

Imported Vehicle Distributor: Yamaha Motor Corporation, U.S.A.
6555 Katella Avenue
Cypress, California 90630
2. **Vehicles Affected:** **Make:** Yamaha
Model: 2007 Model Year XF50 Motorcycles
2007 Model Year XC50 Motorcycles

Nominal Engine Displacement: XF50 is 50cc
XC50 is 50cc

Production Period: 12/2006 – 04/2007 (XF50)
06/2006 – 04/2007 (XC50)
3. The campaign relates to the motorcycle's connecting rod.
4. Total number of subject vehicles: Current estimate: 4,800 units. This will be updated in a supplemental report as we finalize the affected VIN range (XF50; 3,000 units, XC50; 1,800 units).

5. VIN Range: See tentative range attached in draft Technical Bulletin. Likewise this will be updated in a subsequent report as data is confirmed.
6. The campaign involves the replacement of the connecting rod. On some units, a crack may develop on the connecting rod. If the engine continues to be run, the crack will develop further and in the worst case, the connecting rod may break. If this happens, the engine will stop and cannot be restarted. Please refer to the attached draft Technical Bulletin which will be furnished to dealers upon completion, describing the situation which is the subject of the campaign.
7. On September 2, 2008, Yamaha Motor Corporation, U.S.A. was informed by the manufacturer, Yamaha Motor Taiwan Trading Company, Ltd., that such a situation exists. This was determined pursuant to a quality control review, testing and a review of foreign models that use a substantially similarly part design.

We anticipate commencing dealer/owner notification shortly after the owner's notification letter is approved by NHTSA, the affected VIN range is ascertained and the Technical Bulletin finalized. We anticipate sending the Agency the owner's notification letter for review/approval by September 16, 2008 along with a second draft of the Technical Bulletin. Assuming the Agency can approve the letter within 5 days of receipt (perhaps September 22) we will have the letter and Technical Bulletin printed. Normal turn-around time is 3 working days for such printing. Hence the materials will be ready for mailing approximately September 25th. Final copies of these notification documents will be forwarded to the Agency as soon as possible.

In the event we can answer any questions or provide supplemental information, please do not hesitate to contact the undersigned. My direct telephone number is 714-761-7709. The fax number is 714-761-7836. My email is russ_jura@yamaha-motor.com or contact Brad Franklin at 714-761-7842 (telephone), 714-229-7944 (Fax), brad_franklin@yamaha-motor.com (email).

Sincerely,



Russell D. Jura
Senior Vice President
and General Counsel

RDJ/dlb

cc: By Fed Ex and Facsimile
Defects & Recall Information Analysis Division
Mrs. Pat Wallace
Mrs. Kelly Schuler
(FAX: 202-366-0699)
Mr. Robert Young (via email)

2007 XC50W (“Vino Classic”) and XF50W (“C³”) Scooters FACTORY MODIFICATION CAMPAIGN – Connecting Rod

INTRODUCTION

Yamaha Motor Corporation, U.S.A., has decided that a defect which relates to motor vehicle safety exists in certain 2007 XC50W (“Vino Classic”) and XF50W (“C³”) scooters. In affected scooters, the connecting rod in the engine could crack or break because of improper heat treatment on the metal. If the connecting rod breaks, the engine would immediately stop running. If the engine stops while scooter is being ridden, there could be an accident resulting in injury or death.

To correct this defect, Yamaha is initiating a Factory Modification Campaign. Affected scooters must have the engine disassembled and the crankshaft assembly replaced with one that has a properly heat-treated connecting rod.

Yamaha is notifying all registered owners of affected scooters by mail. A copy of this letter is included in this bulletin. The customer should take the letter along with the affected scooter to an authorized Yamaha dealer for the modification.

A computer report listing all affected scooters invoiced to your dealership is included with this bulletin. Use the list to help ensure all scooters are modified. All sold scooters that have been registered with Yamaha will show the customer’s name and address. Your dealership must notify the owner of any affected scooter that was actually sold but is listed as “unsold” in the report.

You must modify all affected scooters in your inventory as well as all customer-owned scooters brought to you for this service. Any affected scooter that you purchase from Yamaha in the future will also require modification. If you purchase a scooter from another dealer, check to see if the procedures in this bulletin have already been performed before you sell the scooter.

Scooters that are affected should not be operated until they are modified. It is a violation of Yamaha policy for your dealership to deliver any affected scooters to customers until the procedures in this bulletin are performed.

When the modification on each scooter is performed, follow the Warranty Information section of this bulletin to receive reimbursement. Be sure to use the Factory Modification Campaign procedures in Chapter 8 of the **Warranty and Y.E.S. Handbook** (LIT-11790-00-05).

DEALER ACTION SUMMARY

Modify:	All units in the affected range. Before modifying a unit, check for a punch mark on the VIN as shown in the Identification Procedure section of this bulletin which indicates that the required modification has already been performed.
Parts Required:	Yes. Order one XC/XF Crank Kit per unit.
Warranty:	Factory Modification Campaign.
Notify Customers:	Yes. You must immediately contact any customer whose scooter shows as unregistered on the enclosed report. Yamaha has sent letters to customers whose scooters were registered for warranty as of xx/xx/08.

AFFECTED RANGE

2007 XC50W
2007 XF50W

SA30A-131071~132936
SA33A-100101~103118

SERVICE PROCEDURES

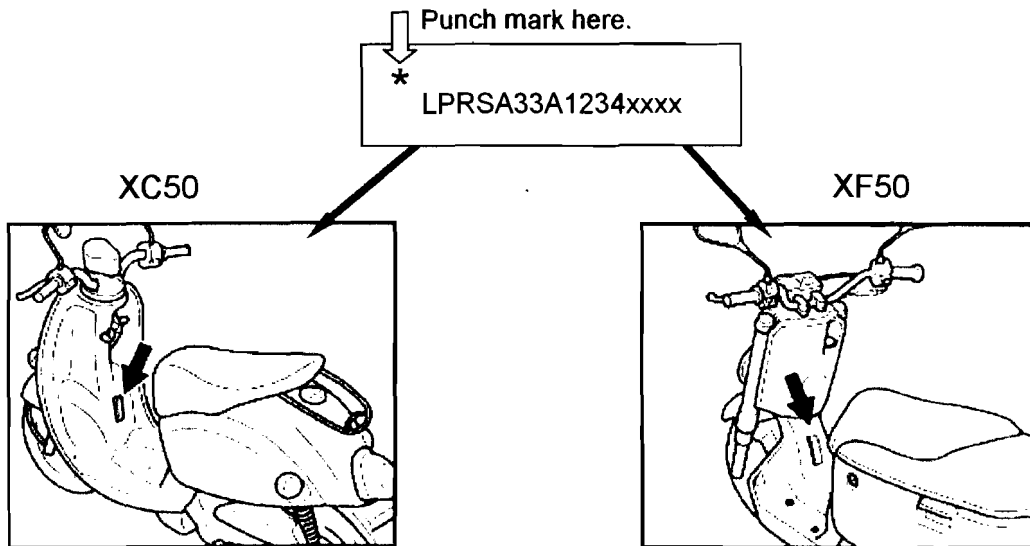
Follow the service manual procedures for crankshaft replacement.

XC50: LIT-11616-19-49

XF50: LIT-11616-20-58

IDENTIFICATION PROCEDURE

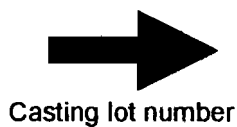
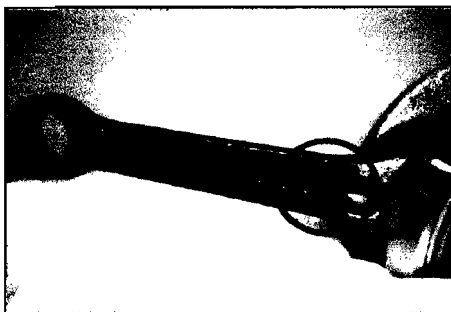
When the modification is complete, put a punch mark next to the Primary ID as shown. Check for this punch mark if you encounter an unfamiliar unit. You can also check unit status on YDS or by contacting your Regional Technical Advisor.



PARTS INFORMATION

Part Number	Description	Dealer Cost
90891-10173-00	XC/XF Crank Kit Kit Contents: <i>For XC/XF50</i> 5ST-E1400-10-00 Crank Assy 5ST-E5453-10-00 Gasket, 1 93102-19804-00 Oil seal 93450-10823-00 Circlip (2 pcs) 5ST-E1351-10-00 Cylinder gasket 1 5ST-E1181-10-00 Cylinder head gasket 5ST-E2435-10-00 Gasket 1P4-E4613-00-00 Gasket, Ext 1 5ST-E1400-10-00 Crank Assy 93211-18800-00 O-ring 90280-03045-00 Woodruff key 4DH-E2213-01-00 Tensioner case gasket 90430-06166-00 Gasket (4 pcs) 93210-22803-00 O-ring (2 pcs) 93102-17807-00 Oil seal 90430-08119-00 Gasket 93210-35879-00 O-ring <i>For XC50</i> 9560L-10200-00 U-nut 90185-14814-00 Self-locking nut 93306-205YU-00 Bearing 99001-08600-00 Circlip 5ST-E5451-00-00 Crankcase cover gasket <i>For XF50</i> 90185-14124-00 Self-locking nut 90185-10801-00 Self-locking nut 93306-205XP-00 Bearing 99002-08600-00 Circlip 3B3-35451-00-00 Crankcase cover gasket	\$78.44

To identify a crankshaft assembly with an improperly treated connecting rod, look at the casting lot number:



Casting lot number



Model	Incorrect Connecting Rods	Correct Connecting Rods
XC50W	12 and 13	Other numbers
XF50W	07, 08, 09, 10,11,12, and 13	Other numbers

WARRANTY INFORMATION

The owner of each warranty-registered unit will receive a letter announcing this campaign. The letter has a label that includes the Primary ID and Recall Number.

The modification is authorized for all scooters, both sold and unsold, regardless of ownership or warranty status. You do not need the customer's letter to perform the modification or to file for reimbursement.

Submit a Recall Request for the crankshaft assembly exchange as described below using Recall Number **9900xx**. Choose the status **"M."**

YDS:

When signed on to YDS, click on the Service Tab, and then "Recall Request-Add." This function will allow you to enter multiple Primary IDs for the same recall. Remember that YDS requires a 7-digit serial number, so use a "0" as the first digit. The system will check your submission instantly to make sure the Primary ID numbers you've entered are valid for the recall. You can check back the next day for your claim numbers to track your credit.

MAIL:

Complete a recall Reimbursement Request (LIT-11790-00-03) as shown below:

[Sample]

If you have any questions about proper procedures for Factory Modification Campaigns, see Chapter 8 in your Warranty and Y.E.S. Handbook (LIT-11760-00-05).