



June 11, 2008

08V-272
(9 Pages)

Mr. Daniel Smith
Associate Administrator for Enforcement
National Highway Traffic Safety Administration
1200 New Jersey Avenue, SE
Washington, D.C. 20590

RE: Noncompliance Information Report

Dear Mr. Smith:

Pursuant to Part 573 of Title 49 of the Code of Federal Regulations, Hyundai Motor Company is submitting information concerning a recall that is being voluntarily initiated. Specific information as required by Section 573.6 is as follows:

573.6(c)(1)

Manufacturer – Hyundai Motor Company

Distributor – Hyundai Motor America

573.6(c)(2)

Certain model year 2007 and 2008 Hyundai Santa Fe vehicles produced beginning April 19, 2006 through May 29, 2008 that were equipped with P235/60R18 tires at the assembly plant.

573.6(c)(3)

Approximately 88,943 model year 2007 and 2008 Hyundai Santa Fe vehicles produced beginning April 19, 2006 through May 29, 2008 that were equipped with P235/60R18 tires at the assembly plant.

573.6(c)(4)

All of the vehicles identified above in 573.6(c)(2) are potentially affected.

Hyundai-Kia America Technical Center Inc.
6800 Geddes Road, Superior Township, MI 48198
TEL: 734-337-9499 FAX: 734-483-5919
www.hatci.com

Hyundai-Kia America Technical Center, Inc

573.6(c)(5)

49 CFR Part 567.4(g)(4) requires that the certification label contain "Gross Axle Weight Rating" or "GAWR," followed by the appropriate value in pounds, for each axle, identified in order from front to rear (e.g., front, first intermediate, second intermediate, rear). FMVSS 110 S4.2.2.1 requires that, except as provided in S4.2.2.2, the sum of the maximum load ratings of the tires fitted to an axle shall not be less than the GAWR of the axle system as specified on the vehicle's certification label required by 49 CFR part 567 and S4.2.2.2 requires that when passenger car tires are installed on an MPV, truck, bus, or trailer, each tire's load rating is reduced by dividing it by 1.10 before determining, under S4.2.2.1, the sum of the maximum load ratings of the tires fitted to an axle.

The rear GAWR exceeds the capacity of the rear tires as prohibited by FMVSS 110.

573.6(c)(7)

Hyundai Motor Company first became aware of the possibility of an incorrect rear GAWR value listed on the certification labels during a regular assessment of vehicle safety information. Hyundai Motor Company has since determined that the rear GAWR exceeds the capacity of the P235/60R18 tires mounted on that axle.

The certification label incorrectly lists the GAWR as FRONT 2976 lbs and REAR 3197 lbs. The correct GAWR for these vehicles are FRONT 2910 lbs and REAR 3131 lbs.

Hyundai is not aware of any accidents related to this condition.

573.6(c)(8)

Hyundai Motor Company has reduced both the front and rear GAWR by 66 pounds each for 2008 Santa Fe vehicles that are equipped with P235/60R18 tires at the assembly plant. The change occurred in production on May 30, 2008. Hyundai Motor Company has also decided to notify owners of 2007 and 2008 model year Santa Fe vehicles that were equipped with P235/60R18 tires at the assembly plant that the front and rear GAWR have been reduced. Hyundai will provide a GAWR Correction Label to customers to be applied adjacent to the certification label and clearly indicating the correct GAWR values.

All owners of record of the affected vehicles produced beginning April 19, 2006 through May 29, 2008 will be contacted by first class mail and will be provided with a GAWR Correction Label indicating the correct GAWR values. Owners will be asked to install the GAWR Correction Label adjacent to the certification label. They also will be instructed that they may bring their vehicles to Hyundai dealers to have the GAWR Correction Label installed if they have any difficulty with the procedure or if they wish to have the dealer install the label. The repair procedure will consist of installing the GAWR Correction Label, clearly indicating the correct GAWR values, adjacent to the certification label.

Hyundai-Kia America Technical Center, Inc

Hyundai anticipates that owners will be notified in one mailing during August, 2008.

There have been no repairs related to the installation of GAWR Correction Labels for the purpose of correcting the information required by Part 567 and FMVSS 110. As no owners of these 2007 and 2008 model year vehicles would have incurred expenses as a result of this condition, Hyundai believes that it is not necessary, and should not be required, to provide notification regarding reimbursement under section 577.11.

573.6(c)(10)

Copies of the Technical Service Bulletin and relevant dealer notifications are attached.

573.6(c)(11)

Drafts of the owner notification letter and the GAWR Correction Label installation procedure that will be enclosed with the owner notification letter are attached.

573.6(c)(12)

Hyundai has assigned "Campaign 084" as the designation for the campaign.

Sincerely,



Robert Babcock
Senior Manager, Regulation and Certification Department

Attachments

DRAFT MOTOR VEHICLE RECALL

Dear 2007 or 2008 Hyundai Santa Fe Owner:

This notice is sent to you in accordance with the requirements of the National Traffic and Motor Vehicle Safety Act.

Federal regulation requires that any vehicle lessor receiving this recall notice must forward a copy of this notice to the lessee within ten days.

Hyundai has determined that 2007 and 2008 model year Santa Fe vehicles equipped with P235/60R18 tires and produced beginning April 19, 2006 through May 29, 2008, fail to conform to the labeling requirements of Federal Motor Vehicle Safety Standard No. 110, Tire Selection and Rims for Motor Vehicles with a GVWR of 10,000 Pounds or Less.

The black Certification Label affixed to the driver's side center pillar, visible when the driver's door is open, incorrectly lists the Gross Axle Weight Ratings (GAWR) as FRONT 2976 lbs and REAR 3197 lbs. The correct GAWR for these vehicles are FRONT 2910 lbs and REAR 3131 lbs.

Do not load your vehicle in excess of the correct Gross Axle Weight Ratings. Overloading your vehicle may adversely affect handling and braking and may cause tire damage, resulting in tire failure and a crash without warning.

In order to make your vehicle comply with the labeling requirements of Federal Motor Vehicle Safety Standard 110, please install a new GAWR Correction Label adjacent to the black Certification Label that is currently affixed to the driver's side center pillar. A new label containing the correct GAWR for the front and rear axles is enclosed with this letter. Please apply the new label to the driver's side center pillar in the space just above the black Certification Label as shown on the attached GAWR Correction Label Installation Procedure. **PLEASE BE CAREFUL NOT TO REMOVE OR COVER THE BLACK CERTIFICATION LABEL OR TIRE PRESSURE LABEL.**

Should you have or anticipate any trouble installing the new label, or if you would rather have your Hyundai Dealer assist you, please call your Hyundai Dealer to make an appointment with them to have the label installed. When you go to your Hyundai Dealer, take the new label with you for them to install at no charge to you.

For any questions, concerns or other problems, we invite you to call the Hyundai Customer Assistance Center at 1-800-633-5151. If you are still not satisfied that Hyundai has remedied this situation without charge, and within a reasonable amount of time, you may wish to write to the Administrator, National Highway Traffic Safety Administration, 1200 New Jersey Avenue, SE, Washington, D.C. 20590, or call their toll-free Vehicle Safety Hotline at 1-888-327-4236 (TTY: 1-800-424-9153), or go to <http://www.safercar.gov>.

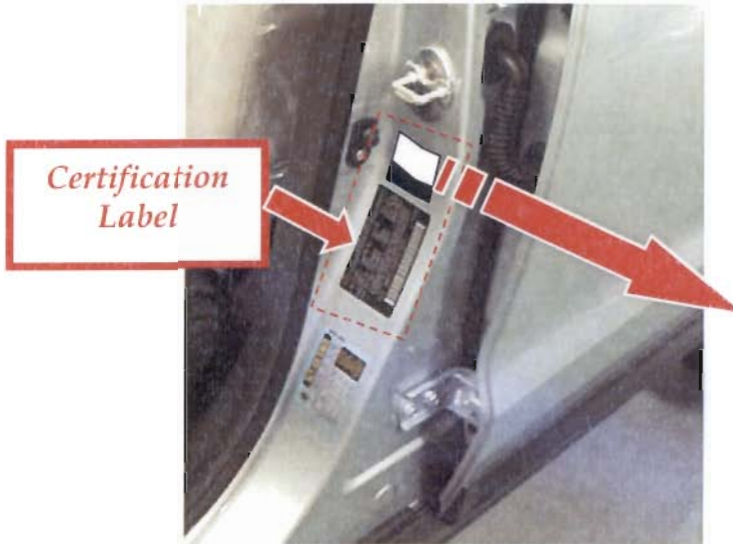
We urge your prompt attention to this matter.

Hyundai Motor America

DRAFT Santa Fe GAWR Correction Label Installation Procedure

Note: The new GAWR Correction Label should be installed when the temperature is above 50° F.

1. Locate the black Certification Label on the driver's side center pillar as shown.



2. Clean the painted area above the black Certification Label using a rag dampened with rubbing alcohol. Wipe the surface dry with a paper towel.

3. Carefully peel the new GAWR Correction Label from its backing beginning at a top corner, pulling it downward at an angle towards the other side.



4. Carefully apply the new GAWR Correction Label onto the driver's side center pillar in the painted space above the black Certification Label.



//ALL June 11, 2008 August 31, 2008
TO: Hyundai Dealership General Managers, Sales Managers,
Service Managers, Parts Managers, and Warranty
Administrators
FROM: Hyundai Motor America
DATE: June 11, 2008

**SUBJECT: Campaign 084 - 2007/2008 Santa Fe - Gross Axle Weight Rating
(GAWR) Correction Label Installation**

Hyundai Motor America is conducting a Customer Notification for a Gross Axle Weight Rating Correction Label Installation campaign on 2007 and 2008 Model Year Santa Fes that were equipped at the assembly plant with 18 inch tires and wheels.

This campaign provides a procedure to install a corrected GAWR label only on vehicles with 18 inch factory installed tires and wheels.

In order to identify only those vehicles affected by Campaign 084, it will be necessary to access Hyundai Motor America's "Warranty Vehicle Information" screen via DCS On-line before installing a corrected GAWR label. The "Warranty Vehicle Information" screen will identify affected vehicles with an open Campaign 084. All in-stock vehicles, if any, must have Campaign 084 completed prior to retailing.

Enclosed with the Service Manager's letter are materials, which were developed for your use: Dealer Letter, five (5) copies of the Technical Service Bulletin (TSB#08-01-007) containing instructions on performing the service and submitting the campaign claim, and a VIN listing of your dealer stock vehicles only. TSB #08-01-007 will be available on Hyundai's Website on June 11, 2008.

All Hyundai dealers will be shipped GAWR Labels for 100% of their in-stock vehicles starting June 11, 2008. Additional labels can be ordered from your facing PDC.

Customer notification letters, including a label, will be mailed to all affected customers at a later date.

It is IMPORTANT TO SUBMIT A CAMPAIGN CLAIM FOR EACH VEHICLE SERVICED so your dealership can be compensated for your work and Hyundai can maintain accurate records of campaign completions.

LEGAL LIABILITY NOTICE: You are required to keep confidential any and all information and documents provided to you by Hyundai Motor America in the conduct of carrying out work for this service campaign. Hyundai Motor America dealers may use owner information provided for the campaign only for the purpose of conducting and performing this service campaign, and for no other purpose.

Hyundai appreciates your cooperation and support. Questions may be directed to your District Parts and Service Manager or Warranty HELPREP line at 1-877-446-2922.

HYUNDAI MOTOR AMERICA

June 11, 2008

**TO: ALL HYUNDAI DEALER PRINCIPALS/GENERAL MANAGERS:
ALL HYUNDAI DEALERSHIP SERVICE MANAGERS:
ALL HYUNDAI DEALERSHIP PARTS MANAGERS:
ALL HYUNDAI DEALERSHIP SALES MANAGERS:**

**SUBJECT: Campaign 084 - 2007/2008 Santa Fe - Gross Axle Weight Rating (GAWR)
Correction Label Installation**

Hyundai Motor America is conducting a Customer Notification for a Gross Axle Weight Rating Correction Label Installation campaign on 2007 and 2008 Model Year Santa Fes that were equipped at the assembly plant with 18 inch tires and wheels.

This campaign provides a procedure to install a corrected GAWR label only on vehicles with 18 inch factory installed tires and wheels.

In order to identify only those vehicles affected by Campaign 084, it will be necessary to access Hyundai Motor America's "Warranty Vehicle Information" screen via DCS On-line before installing a corrected GAWR label. The "Warranty Vehicle Information" screen will identify affected vehicles with an open Campaign 084. All in-stock vehicles, if any, must have Campaign 084 completed prior to retailing.

Enclosed with the Service Manager's letter are materials, which were developed for your use: Dealer Letter, five (5) copies of the Technical Service Bulletin (TSB#08-01-007) containing instructions on performing the service and submitting the campaign claim, and a VIN listing of your dealer stock vehicles only. TSB #08-01-007 will be available on Hyundai's Website on June 11, 2008.

All Hyundai dealers will be shipped GAWR Labels for 100% of their in-stock vehicles starting June 11, 2008. Additional labels can be ordered from your facing PDC.

Customer notification letters, including a label, will be mailed to all affected customers at a later date.

It is IMPORTANT TO SUBMIT A CAMPAIGN CLAIM FOR EACH VEHICLE SERVICED so your dealership can be compensated for your work and Hyundai can maintain accurate records of campaign completions.

LEGAL LIABILITY NOTICE: You are required to keep confidential any and all information and documents provided to you by Hyundai Motor America in the conduct of carrying out work for this service campaign. Hyundai Motor America dealers may use owner information provided for the campaign only for the purpose of conducting and performing this service campaign, and for no other purpose.

Hyundai appreciates your cooperation and support. Questions may be directed to your District Parts and Service Manager or Warranty HELPREP line at 1-877-446-2922.

HYUNDAI MOTOR AMERICA



HYUNDAI Technical Service Bulletin

Group	CAMPAIGN
Number	08-01-007
Date	JUNE, 2008
Model	2007-2008 SANTA FE

Subject
**GROSS AXLE WEIGHT RATING CORRECTION LABEL
 INSTALLATION (CAMPAIGN 084)**

CIRCULATE TO:	<input type="checkbox"/> GENERAL MANAGER	<input checked="" type="checkbox"/> PARTS MANAGER	<input checked="" type="checkbox"/> TECHNICIAN
<input checked="" type="checkbox"/> SERVICE ADVISOR	<input checked="" type="checkbox"/> SERVICE MANAGER	<input checked="" type="checkbox"/> WARRANTY MGR	<input type="checkbox"/> SALES MANAGER

IMPORTANT: DEALERS MUST PERFORM THIS CAMPAIGN ON ALL AFFECTED VEHICLES PRIOR TO CUSTOMER RETAIL DELIVERY.

NOTE: This campaign applies only to 2007-2008 model year Santa Fe vehicles that were equipped at the assembly plant with 18 inch wheels and P235/60R18 tires.

DESCRIPTION:

On some Santa Fe (CM) vehicles, the Gross Axle Weight Rating (GAWR) information on the Certification Label may be incorrect. This bulletin describes the procedure to apply the GAWR correction label.

APPLICABLE TO:

Model: Santa Fe (CM) equipped with factory installed 18 inches tires.

Applicable vehicle production date range: Job#1 through May 29, 2008

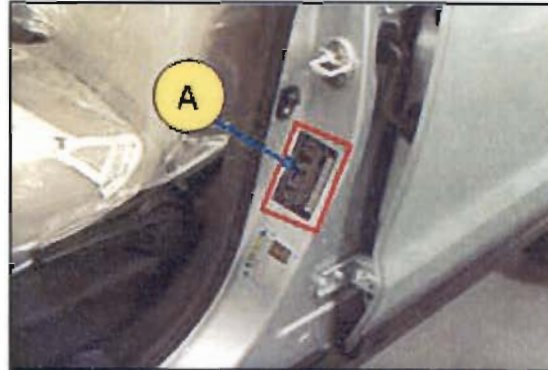
TOOLS/PARTS INFORMATION:

PART NAME	FIGURE
GAWR Correction Label P/N 86463-0W00A	<p>ATTENTION THE GAWR INFORMATION ON THE CERTIFICATION LABEL IS INCORRECT. THE CORRECT GAWR INFORMATION IS LOCATED AT THE BOTTOM OF THIS LABEL.</p> <p>GAWR FRONT 2910 lbs REAR 3131 lbs</p>

SERVICE PROCEDURE:

NOTE: The GAWR Correction Label should be installed when the temperature is above 50 degrees F.

- 1. Locate the black Certification Label (A) on the driver's side center pillar as shown.



- 2. Clean the painted area (B) above the black Certification Label using a rag dampened with rubbing alcohol. Wipe the surface dry with a paper towel.



- 3. Carefully peel the new GAWR Correction Label from its backing beginning at the center, pulling it downward at an angle towards the other side.
- 4. Carefully apply the new GAWR Correction Label onto the driver's side center pillar in the painted space above the black Certification Label.



CAMPAIGN CLAIM INFORMATION:

OP CODE	OPERATION	OP TIME	
80BA08R1	NEW GAWR CORRECTION LABEL INSTALLATION (DEALER)	0.2 M/H	

NOTE: Submit claim using the Campaign Claim Screen.