



RECEIVED

2008 MAY 19 A 10:35

DEFECTS INVESTIGATION
RECALL MGMT DIV.

MITSUBISHI FUSO

TRUCK OF AMERICA, Inc.

2015 Center Square Road
Logan Twp., NJ 08085
(856) 467-4500
(856) 467-4695 Fax

May 16, 2008

George Person
Chief, Recall Management Division
Office of Defects Investigation, Safety Assurance
U.S. Department of Transportation
National Highway Traffic Safety Administration, Room 5319
400 Seventh Street, S.W.
Washington, DC 20590

08V-224
AMENDED

**Subject: Safety Recall Notification on the AISIN Automatic Transmission Shift Linkage;
Model Years: 1999 – 2004; Models: FE639, FE640, FE649, FG639, FH210
MFTA Safety Recall – C1003610 AISIN A/T Shift Linkage
NHTSA Safety Recall – _____**

Dear Mr. Person:

This is an update to the Safety Recall Notification sent on May 15, 2008. The updates are in bold and underlined text. This update includes the "Summary Report of All Warranty Claims, Field or Service Reports, and Other Information, with their Date of Receipt" requested in item six (6) below.

Pursuant to 49 CFR, Part 573, Mitsubishi Fuso Truck of America, Inc. (MFTA) herewith files a defect and noncompliance information report concerning the AISIN automatic transmission (A/T) shift linkage on certain 1999 through 2004 model year FE639, FE640, FE649, FG639 and FH210 Mitsubishi Fuso trucks for all states. The contents of this report are arranged to follow the sequence set forth in Section 573.5.

MFTA noticed a reoccurrence of binding in the countermeasure components installed during the 05V-304 C1000010 AISIN A/T Shift Linkage Recall, and advised Mitsubishi Fuso Truck and Bus Corporation (MFTBC) through submission of Warranty Service Claims (WSC) and Product Quality Reports (PQR). MFTBC determined that it was necessary to perform the subject corrective action.

The Dealer Recall Information Bulletin and a sample of the letter that will be sent to each Mitsubishi Fuso truck owner affected by this recall will be forwarded to you upon completion.

Sincerely,

William P. Mohr
Director, Service Operations.
Mitsubishi Fuso Truck of America, Inc.
Phone: (856) 467-3917 Fax: (856) 467-4665

Enclosure: As stated

Defect and Noncompliance Information Report

1. The manufacturer's name:

Mitsubishi Fuso Truck & Bus Corporation (MFTBC), Japan

2. Identification of the vehicles or items of motor vehicle equipment potentially containing the defect or noncompliance:

Models	Model Year Range
FE639	1999 – 2004
FE640	2001 – 2004
FE649	1999 – 2004
FG639	1999 – 2004
FH210	2003 – 2004

- a) Inclusive dates of manufacture:

Models	Vehicle Production
FE639	February 27, 1998 through December 27, 2003
FE640	June 15, 2000 through January 12, 2004
FE649	February 27, 1998 through January 5, 2004
FG639	April 27, 2000 through January 20, 2004
FH210	January 30, 2002 through January 9, 2004

- b) GVWR or class of truck:

Models	GVWR	Class
FE639	11,600 lbs.	3
	13,500 lbs.	3
FE640	14,500 lbs.	4
FE649	14,500 lbs.	4
FG639	12,000 lbs.	3
FH210	17,900 lbs.	5

- c) Names of the components:

A/T shift control lever assembly

3. The total number of vehicles or items of equipment potentially containing the defect or noncompliance, and where available, the number of vehicles or items of equipment in each group identified pursuant to paragraph (c) (2) of the section:

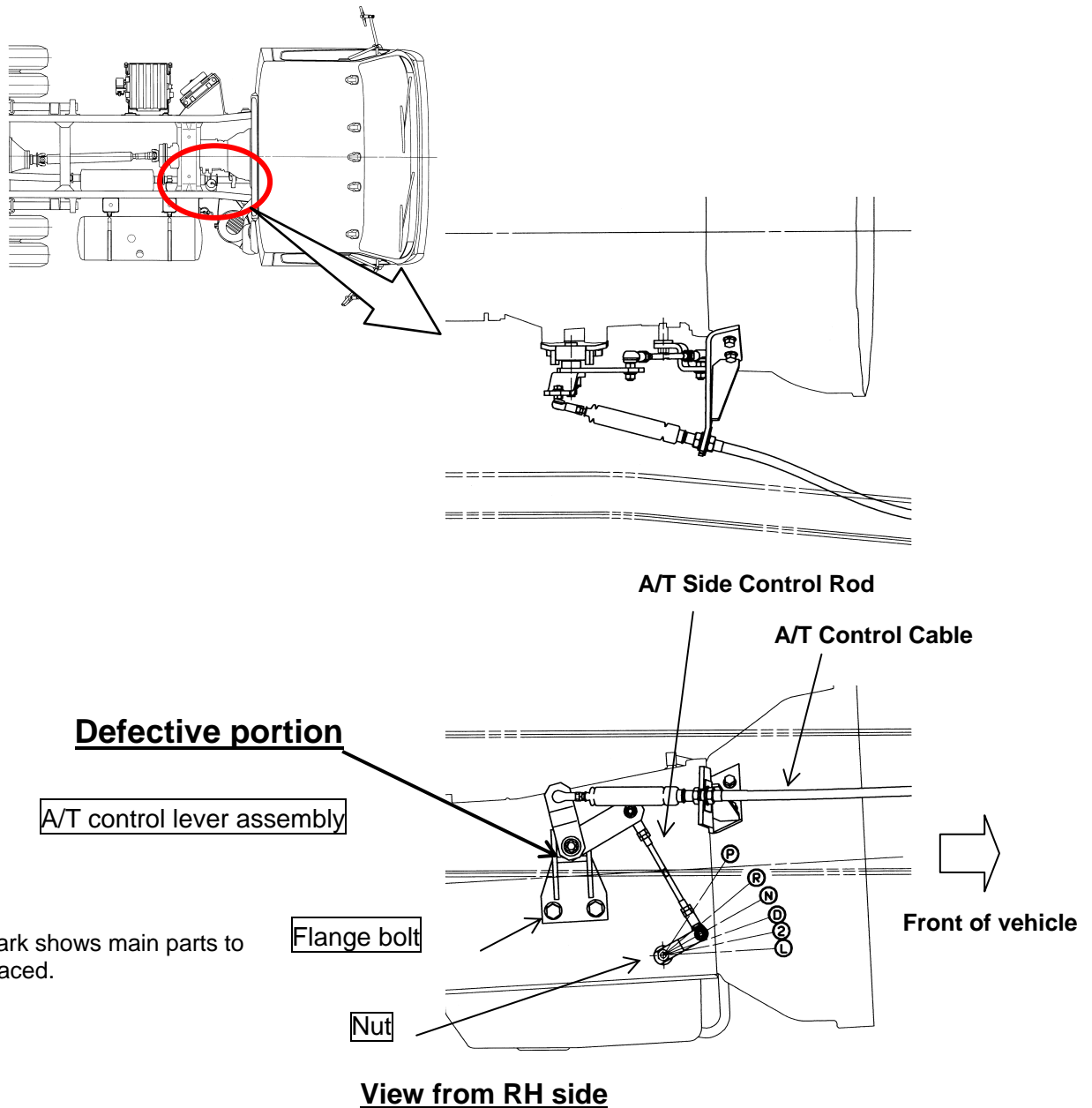
Models	# of Vehicles – U.S.	# of Vehicles – Canada	
'99 – '04 FE639	5,880	109	
'01 – '04 FE640	3,796	90	
'99 – '04 FE649	4,445	26	
'99 – '04 FG639	242	38	
'03 – '04 FH210	1,186	83	
Totals	15,549	346	15,895

4. The percentage of vehicles or items of equipment specified pursuant to paragraph (c) (2) of the section estimated to actually contain the defect or noncompliance:

Unknown

5. A description of the defect or noncompliance, including both a brief summary and a detailed description, with graphic aids as necessary, of the nature and physical location (if applicable) of the defect or noncompliance:

On affected vehicles, normal heat emanating from the exhaust pipe may cause the A/T shift linkage to deform. The effort required to operate the A/T shift control lever may increase if the linkage binds due to the deformation. In the worst case, the shift control lever may become inoperative, or the physical shift lever position on the shift lever housing gear indicator may not match the actual gear selection at the transmission. Please note that the electronic gear selector on the instrument panel is unaffected by this failure and will continue to indicate the actual gear selected at the transmission.



6. In the case of defect, a chronology of all principal events that were the basis for the determination that the defect related to motor vehicle safety, including a summary of all warranty claims, field or service reports, and other information, with their date of receipt:

On May 9, 2008, MFTBC notified MFTA that they had determined that a defect related to motor vehicle safety existed and instructed MFTA to perform a safety recall.

After deliberate study of failed sample parts, MFTBC determined that the cause of failure was insufficient high operating temperature durability. This condition could allow the A/T shift linkage to deform, causing the linkage to bind, resulting in an increase the effort required to operate the A/T shift control lever. In the worst case, the shift control lever may become inoperative, or the physical shift lever position on the shift lever housing gear indicator may not match the actual gear selection at the transmission. Please note that the electronic gear selector on the instrument panel is unaffected by this failure and will continue to indicate the actual gear selected at the transmission.

Between May 10, 2006 and May 8, 2008, MFTA received one hundred eighty eight (188) Warranty Service Claims (WSC) and forty seven (47) Product Quality and Field Reports (PQR/FR) relating to affected vehicles. The summary report of all warranty claims, field or service reports, and other information MFTA has received, with their date of receipt is attached. Copies of the WSC's and PQR's are available upon request. MFTA has not received any notice of accident or injury relating to the subject components.

7. In the case of noncompliance, the test results or other data on the basis of which the manufacturer determined the existence of the noncompliance:

Not applicable.

8. A description of the manufacturer's program for remedying the defect or noncompliance:

Install a modified A/T shift control lever assembly.

MFTA will instruct its Dealer body to initiate a safety recall campaign as soon as the parts and notification become available.

Following is MFTA's proposed campaign schedule:

Estimated parts arrival date: 7/7/08

Estimated dealer notification: 7/8/08

Estimated start of customer notification: 7/11/08

9. Furnish a final copy of all notices, bulletins and other communications that relate directly to the defect or noncompliance and which are sent to more than one manufacturer, distributor, dealer or purchaser:

MFTA will provide NHTSA with a final copy of all related documents when they have been completed.

If you have any questions or concerns, please do not hesitate to contact me at the number listed below.

Sincerely,



William P. Mohr
Director, Service Operations
Mitsubishi Fuso Truck of America, Inc.
Phone: (856) 467-3917 Fax: (856) 467-4665

c: K. Idota (MFTBC)

Summary Report of All Warranty Claims, Field or Service Reports,
and Other Information, with their Date of Receipt

Warranty Service Claims (WSC)

<u>Date of Receipt</u>	<u>MFTA WSC Number</u>	<u>Date of Receipt</u>	<u>MFTA WSC Number</u>
		12/19/2007	D9190118W
5/10/2006	D3071R625	12/28/2007	D1185124F
8/2/2006	D1185RA73	12/28/2007	D1185124G
8/2/2006	D1185RB17	1/2/2008	D1185124K
9/18/2006	D4009R729	1/14/2008	D9190120A
9/20/2006	D1185RB39	1/14/2008	D9190120B
9/20/2006	D1185RB65	1/16/2008	D1164172B
9/22/2006	D9190R610	1/16/2008	D1185125M
9/26/2006	D1149R759	1/16/2008	D9190120G
10/12/2006	D1149R760	1/18/2008	D9190120P
12/12/2006	D9190101W	1/30/2008	D1185125W
1/4/2007	D9190102V	1/30/2008	D1185125X
1/5/2007	D9190102W	2/1/2008	D1107115U
2/12/2007	D9190103W	2/7/2008	D2011187X
2/13/2007	D1057112X	2/7/2008	D2011T857
2/21/2007	D9190104G	2/19/2008	D1164174W
3/21/2007	D9190105E	2/19/2008	D2011189H
3/21/2007	D9190105F	2/19/2008	D2011189K
3/21/2007	D9190105G	2/19/2008	D2011189M
3/23/2007	D2087101N	2/21/2008	D2011189S
3/28/2007	D1185106P	2/22/2008	D2011189T
3/29/2007	D9190105P	2/22/2008	D2011189U
4/13/2007	D1185107A	2/26/2008	D2011190D
4/21/2007	D1192103R	2/26/2008	D9190122F
4/27/2007	D4028115Y	2/27/2008	D2011190T
5/2/2007	D9190106W	2/28/2008	D2011190W
5/15/2007	D9190107M	2/28/2008	D2011190Y
5/16/2007	D1185109C	3/3/2008	D2011191P
5/16/2007	D1185SB92	3/8/2008	D1164176N
5/22/2007	D9190108A	3/8/2008	D1164176P
5/24/2007	D9190108D	3/10/2008	D2011192L
5/29/2007	D2100106K	3/10/2008	D2011192M
6/1/2007	D1185110N	3/11/2008	D2011192N
6/1/2007	D1185110R	3/11/2008	D4028147M
6/1/2007	D1185SB96	3/12/2008	D1107117J
6/1/2007	D1185SB97	3/12/2008	D1107117L
6/6/2007	D1142111S	3/12/2008	D1111127Y
7/3/2007	D1185112R	3/12/2008	D2011192X
7/16/2007	D1107110H	3/13/2008	D1164176U
7/19/2007	D1185113F	3/13/2008	D1164TW35
7/29/2007	D1192106D	3/13/2008	D2011192Y
8/2/2007	D1164145G	3/14/2008	D1185126Q
8/3/2007	D1102129R	3/14/2008	D1185126R
8/16/2007	D1164147Y	3/14/2008	D2011193L
8/20/2007	D9190111N	3/15/2008	D1164176Y
8/30/2007	D1185115E	3/15/2008	D1164TW36
8/31/2007	D9190112D	3/17/2008	D1107117M
9/18/2007	D9190113V	3/17/2008	D1189138T
9/19/2007	D1185116Y	3/17/2008	D2011193N
9/24/2007	D9190114J	3/18/2008	D1107117N
10/8/2007	D1197103C	3/18/2008	D1185126U
10/17/2007	D1149112D	3/18/2008	D2011193P
11/29/2007	D9190117U	<u>Date of Receipt</u>	<u>MFTA WSC Number</u>
		3/18/2008	D2011193Q

3/18/2008	D2011193T	4/24/2008	D1189139Y
3/20/2008	D1155137N	4/25/2008	D9190124V
3/22/2008	D1164177C	4/26/2008	D2011198H
3/22/2008	D2011193U	4/28/2008	D1185127Y
3/22/2008	D2011193W	4/28/2008	D2011198K
3/22/2008	D2011193X	4/28/2008	D2020133Q
3/26/2008	D1164177G	4/29/2008	D1102150D
3/26/2008	D1185126W	4/30/2008	D1102150F
3/26/2008	D2011194D	4/30/2008	D2020133W
3/31/2008	D2011194U	5/2/2008	D1102150G
3/31/2008	D2011194V	5/3/2008	D2011198P
3/31/2008	D2011194W	5/3/2008	D2011198V
4/1/2008	D1107117U	5/5/2008	D2020134B
4/1/2008	D1155137W	5/5/2008	D4028149P
4/1/2008	D2011195D	5/5/2008	D4028149Q
4/2/2008	D1107117V	5/5/2008	D4028149R
4/2/2008	D1107117W	5/6/2008	D2011198Z
4/3/2008	D1102149F	5/6/2008	D2011199A
4/4/2008	D1189139K	5/6/2008	D2020134D
4/4/2008	D2011195V	5/6/2008	D9190125B
4/5/2008	D2011196C	5/7/2008	D2003133R
4/5/2008	D2011196D	5/7/2008	D2011199G
4/8/2008	D2003132Y	5/7/2008	D2020134E
4/8/2008	D2020132K	5/7/2008	D2120102V
4/8/2008	D2020132L	5/8/2008	D1074122Z
4/8/2008	D2020132M		
4/9/2008	D2020132Q		
4/10/2008	D1185127Q		
4/10/2008	D1185127R		
4/10/2008	D2011196U		
4/10/2008	D2011196W		
4/14/2008	D1102149W		
4/15/2008	D1107118D		
4/15/2008	D1164178S		
4/15/2008	D1185127T		
4/15/2008	D1185127U		
4/15/2008	D2003133H		
4/16/2008	D1164178Z		
4/16/2008	D1189139P		
4/16/2008	D2011197P		
4/16/2008	D9190124G		
4/16/2008	D9190124K		
4/17/2008	D2100112M		
4/18/2008	D1107118G		
4/18/2008	D2020132Z		
4/18/2008	D2020133A		
4/18/2008	D2020133B		
4/19/2008	D1164179P		
4/19/2008	D2011197W		
4/19/2008	D2011197X		
4/21/2008	D1155138K		
4/21/2008	D2011198B		
4/21/2008	D2020133E		
4/22/2008	D2020133F		
4/23/2008	D1189139V		
4/23/2008	D2003133K		
<u>Date of Receipt</u>	<u>MFTA WSC Number</u>		
4/23/2008	D2003133L		
4/23/2008	D2020133H		

Product Quality and Field Reports (PQR/FR)

<u>Date of Receipt</u>	<u>MFTA PQR/FR Number</u>
06/01/2006	REJE6014
08/18/2006	FV06T209A
09/22/2006	FV06T209B
09/29/2006	FV06T227A
10/06/2006	FV06T209C
12/27/2006	FV06T209D
01/10/2007	FV07T009A
01/10/2007	FV07T009B
02/20/2007	FV06T209E
02/23/2007	FV07T029A
03/23/2007	FV06T209F
03/24/2007	FV07T009C
03/24/2007	FV07T009D
04/04/2007	FV06T209G
04/11/2007	FV07T009E
04/18/2007	FV06T209H
04/25/2007	FV06N209I
05/02/2007	FV06T209J
05/09/2007	FV07T029B
05/11/2007	FV07T009F
05/31/2007	FV07T009G
02/07/2008	FV07T029C
02/10/2008	FV06T209K
02/20/2008	FV07T029D
02/21/2008	FV06T209L
02/21/2008	FV07T029E
02/21/2008	FV07T029F
03/03/2008	FV06T209M
03/03/2008	FV07T029G
03/03/2008	FV07T029H
03/03/2008	FV07T029I
03/04/2008	FV06T209N
03/04/2008	FV06T209O
03/04/2008	FV07T029J
03/05/2008	FV07T009H
03/05/2008	FV07T029K
03/06/2008	FV06T209P
03/12/2008	FV06N209Q
03/12/2008	FV06N209R
03/12/2008	FV06T209S
03/13/2008	FV06T209T
03/14/2008	FV06T209U
03/14/2008	FV07T029L
03/14/2008	FV07T029M
03/14/2008	FV07T029N
03/18/2008	FV06N209V
03/18/2008	FV06T209W