



RECEIVED

2008 MAY 16 A 10:35

DEFECTS INVESTIGATION
RECALL MGMT DIV.

MITSUBISHI FUSO

TRUCK OF AMERICA, Inc.

2015 Center Square Road
Logan Twp., NJ 08085
(856) 467-4500
(856) 467-4695 Fax

May 15, 2008

08V-224
(5 pages)

George Person
Chief, Recall Management Division
Office of Defects Investigation, Safety Assurance
U.S. Department of Transportation
National Highway Traffic Safety Administration, Room 5319
400 Seventh Street, S.W.
Washington, DC 20590

Subject: Safety Recall Notification on the AISIN Automatic Transmission Shift Linkage;
Model Years: 1999 – 2004; Models: FE639, FE640, FE649, FG639, FH210
MFTA Safety Recall – C1003610 AISIN A/T Shift Linkage
NHTSA Safety Recall – _____

Dear Mr. Person:

Pursuant to 49 CFR, Part 573, Mitsubishi Fuso Truck of America, Inc. (MFTA) herewith files a defect and noncompliance information report concerning the AISIN automatic transmission (A/T) shift linkage on certain 1999 through 2004 model year FE639, FE640, FE649, FG639 and FH210 Mitsubishi Fuso trucks for all states. The contents of this report are arranged to follow the sequence set forth in Section 573.5.

MFTA noticed a reoccurrence of binding in the countermeasure components installed during the 05V-304 C1000010 AISIN A/T Shift Linkage Recall, and advised Mitsubishi Fuso Truck and Bus Corporation (MFTBC) through submission of Warranty Service Claims (WSC) and Product Quality Reports (PQR). MFTBC determined that it was necessary to perform the subject corrective action.

The Dealer Recall Information Bulletin and a sample of the letter that will be sent to each Mitsubishi Fuso truck owner affected by this recall will be forwarded to you upon completion.

Sincerely,

William P. Mohr
Director, Service Operations.
Mitsubishi Fuso Truck of America, Inc.
Phone: (856) 467-3917 Fax: (856) 467-4665

Enclosure: As stated

Defect and Noncompliance Information Report

1. The manufacturer's name:

Mitsubishi Fuso Truck & Bus Corporation (MFTBC), Japan

2. Identification of the vehicles or items of motor vehicle equipment potentially containing the defect or noncompliance:

Models	Model Year Range
FE639	1999 – 2004
FE640	2001 – 2004
FE649	1999 – 2004
FG639	1999 – 2004
FH210	2003 – 2004

- a) Inclusive dates of manufacture:

Models	Vehicle Production
FE639	February 27, 1998 through December 27, 2003
FE640	June 15, 2000 through January 12, 2004
FE649	February 27, 1998 through January 5, 2004
FG639	April 27, 2000 through January 20, 2004
FH210	January 30, 2002 through January 9, 2004

- b) GVWR or class of truck:

Models	GVWR	Class
FE639	11,600 lbs.	3
	13,500 lbs.	3
FE640	14,500 lbs.	4
FE649	14,500 lbs.	4
FG639	12,000 lbs.	3
FH210	17,900 lbs.	5

- c) Names of the components:

A/T shift control lever assembly

3. The total number of vehicles or items of equipment potentially containing the defect or noncompliance, and where available, the number of vehicles or items of equipment in each group identified pursuant to paragraph (c) (2) of the section:

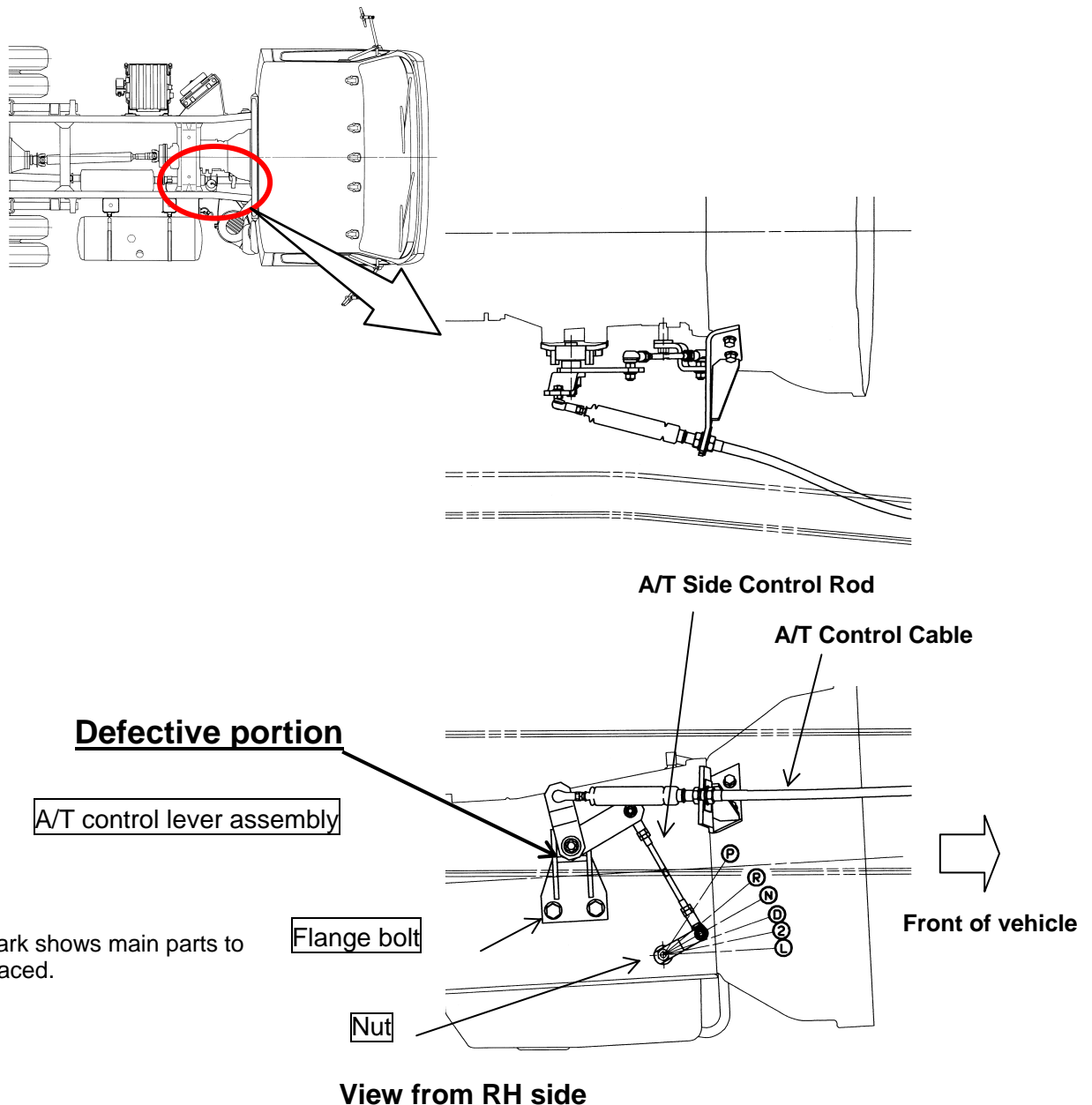
Models	# of Vehicles – U.S.	# of Vehicles – Canada	
'99 – '04 FE639	5,880	109	
'01 – '04 FE640	3,796	90	
'99 – '04 FE649	4,445	26	
'99 – '04 FG639	242	38	
'03 – '04 FH210	1,186	83	
Totals	15,549	346	15,895

4. The percentage of vehicles or items of equipment specified pursuant to paragraph (c) (2) of the section estimated to actually contain the defect or noncompliance:

Unknown

5. A description of the defect or noncompliance, including both a brief summary and a detailed description, with graphic aids as necessary, of the nature and physical location (if applicable) of the defect or noncompliance:

On affected vehicles, normal heat emanating from the exhaust pipe may cause the A/T shift linkage to deform. The effort required to operate the A/T shift control lever may increase if the linkage binds due to the deformation. In the worst case, the shift control lever may become inoperative, or the physical shift lever position on the shift lever housing gear indicator may not match the actual gear selection at the transmission. Please note that the electronic gear selector on the instrument panel is unaffected by this failure and will continue to indicate the actual gear selected at the transmission.



6. In the case of defect, a chronology of all principal events that were the basis for the determination that the defect related to motor vehicle safety, including a summary of all warranty claims, field or service reports, and other information, with their date of receipt:

On May 9, 2008, MFTBC notified MFTA that they had determined that a defect related to motor vehicle safety existed and instructed MFTA to perform a safety recall.

After deliberate study of failed sample parts, MFTBC determined that the cause of failure was insufficient high operating temperature durability. This condition could allow the A/T shift linkage to deform, causing the linkage to bind, resulting in an increase the effort required to operate the A/T shift control lever. In the worst case, the shift control lever may become inoperative, or the physical shift lever position on the shift lever housing gear indicator may not match the actual gear selection at the transmission. Please note that the electronic gear selector on the instrument panel is unaffected by this failure and will continue to indicate the actual gear selected at the transmission.

MFTA is currently reviewing the contents of each Warranty Service Claim and Product Quality Report and will send an updated notification no later than 5:00 PM on May 16, 2008. MFTA has not received any notice of accident or injury relating to the subject components.

7. In the case of noncompliance, the test results or other data on the basis of which the manufacturer determined the existence of the noncompliance:

Not applicable.

8. A description of the manufacturer's program for remedying the defect or noncompliance:

Install a modified A/T shift control lever assembly.

MFTA will instruct its Dealer body to initiate a safety recall campaign as soon as the parts and notification become available.

Following is MFTA's proposed campaign schedule:

Estimated parts arrival date: 7/7/08

Estimated dealer notification: 7/8/08

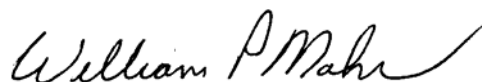
Estimated start of customer notification: 7/11/08

9. Furnish a final copy of all notices, bulletins and other communications that relate directly to the defect or noncompliance and which are sent to more than one manufacturer, distributor, dealer or purchaser:

MFTA will provide NHTSA with a final copy of all related documents when they have been completed.

If you have any questions or concerns, please do not hesitate to contact me at the number listed below.

Sincerely,



William P. Mohr
Director, Service Operations
Mitsubishi Fuso Truck of America, Inc.
Phone: (856) 467-3917 Fax: (856) 467-4665

c: K. Idota (MFTBC)

Summary Report of All Warranty Claims, Field or Service Reports,
and Other Information, with their Date of Receipt

Warranty Service Claims (WSC)

Date of Receipt MFTA WSC Number

Product Quality and Field Reports (PQR/FR)

Date of Receipt MFTA PQR/FR Number