

RECEIVED

DAIMLER

2008 JAN 28 AM 9:10

503-745-5544

Daimler Trucks North America
Nasser Zamani
Manager
Compliance and Regulatory Affairs

January 17, 2008

Dan Smith
Associate Administrator for Vehicle Safety
National Highway Traffic Safety Administration
1200 North Jersey Avenue S.E.
Washington D.C. 20590

08V-031
(3 pages)

Re: Defect Information Report FL-522, Brake Pedal Pushrod Assembly

Mr. Smith

In accordance with Part 573 of Title 49 of the Code of Federal Regulations, Daimler Trucks North America LLC herewith reports a safety campaign to recall 141 Freightliner FLD Classic, Classic XL, and FLD SD vehicles manufactured July 23, 2007 through October 15, 2007 with a defect in the brake pedal pushrod assembly.

Attached is Daimler Trucks North America's Defect Information Report.

Please contact me if you have any questions.

Sincerely yours,



Nasser Zamani

Cc: Michael Mason, CAL-OSHA
Enclosure
Certified Mail# 7006 3450 0003 8408 4769

A Daimler Company

Daimler Trucks North America LLC
4747 N. Channel Avenue
Portland OR 97217-7699
503-745-6910 Phone
503-745-5544 Fax
Nasser.Zamani@Freightliner.com

DAIMLER

Defect Information Report (Section 573.6)

January 17, 2008

(c)(1) **Manufacturer:** Daimler Trucks North America LLC
P.O. BOX 3849
Portland, Oregon 97208
(503) 745-5219

Brands: Freightliner

(c)(2) **Vehicles identification:**

Model(s) affected: FLD Classic, Classic XL, FLD SD

Model Years affected: 2008

Manufacture Dates: July 23, 2007 through October 15, 2007

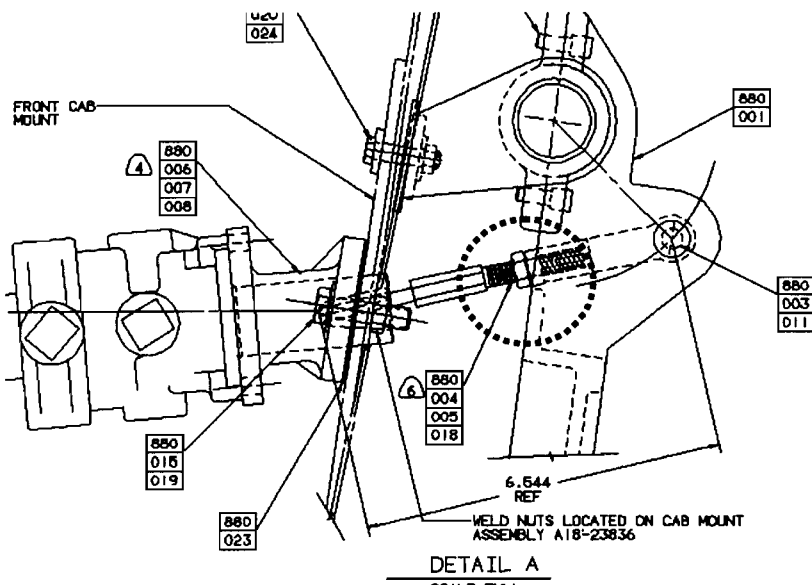
Basis for determining population: FLD trucks and truck-tractors manufactured in Santiago during a period after a change in the assembly process of the brake pedal pushrod adjustment and until the situation was discovered and corrected.

Component manufacturer if other than the vehicle manufacturer: not applicable

(c)(3) **Total number of vehicles potentially affected:** 141

(c)(4) **Percentage of vehicles estimated to contain the defect:** unknown

(c)(5) **Description of the defect:** The jam nuts on the brake pushrod between the pedal and the brake valve may not have been tightened. These nuts secure the adjustment of the brake pedal pushrod.



49CFR Section 577.5(f) Evaluation of the risk to motor vehicle safety: This could result in a gradual loss in braking performance leading to a possible vehicle crash without prior warning.

(c)(6) **Chronology of principal events:** The brake pedal pushrod adjustment process was incorrectly followed by a new operator. Loose brake pedal pushrod jam nuts were reported on delivered trucks. Trucks in the plant were corrected and corrective action was initiated October 16, 2007.

DAIMLER

- (c)(7) **Noncompliance-test or other data:** not applicable
- (c)(8) **Remedial program:** The brake pedal pushrod assembly will be inspected and corrected. Repairs will be performed by Daimler Trucks North America dealerships and Direct Warranty customers, i.e., customers approved by Daimler Trucks North America to do their own warranty repairs. Dealers will be notified by March 14, 2008
- Estimated Owner Notification Date:** Customer notification will be by first class mail using Daimler Trucks North America records to determine the customers affected. This will be completed approximately March 14, 2008
- Reimbursement Plan:** All prior repairs have been completed under warranty.
- (c)(9) **Information for tire recalls:** not applicable
- (c)(10) **Communications sent to dealers and owners:** Copies will be submitted as a supplemental report when available.
- (c)(11) **Copy of proposed owner notification letter:** A draft will be sent for ODI review when available.
- (c)(12) **Manufacturer's campaign number:** FL-522