

Safety Defect and Noncompliance Report Guide for Vehicles
PART 573 Defect and Noncompliance Responsibility and Reports¹

On December 3, 2007, Tiffin Motorhomes [MFR] decided that (a defect which relates to motor vehicle safety)(a noncompliance with Federal Motor Vehicle Safety Standard No. _____) exists in the motor vehicles listed below, and is furnishing notification to the National Highway Traffic Safety Administration in accordance with 49 CFR Part 573 Defect and Noncompliance Responsibility and Reports.

Date this report was prepared: January 21, 2008

Furnish the manufacturer's identification code for this recall (if applicable): FL 509 ZF Steer Geer
(Not released yet per Freightliner)

1. Identify the full corporate name of the fabricating manufacturer of the vehicle being recalled. If the recalled vehicle is imported, provide the name and mailing address of the designated agent as prescribed by 49 U.S.C. §30164.

Tiffin Motorhomes, Inc.

Identify the corporate official, by name and title, whom the agency should contact with respect to this recall.

Bob Tiffin - President

Telephone Number: 256-356-8661 Fax No.: 256-356-1863

Name and Title of Person who prepared this report.

Liz Jones - Warranty Claims

Signed:

[Signature]

RECEIVED
2008 JAN. - 25 AM 8:30
DEFECTS INVESTIGATION
RECALL MGMT DIV.

¹ Each manufacturer must furnish a report, to the Associate Administrator for Enforcement, for each defect or noncompliance condition which relates to motor vehicle safety.

I. Identify the Vehicle Models Involved in the Recall

2. Identify the Vehicles Involved in the Recall, for each make and model or applicable vehicle line (provide illustrations or photographs as necessary to describe the vehicle), provide:

Make(s): _____ Model Years Involved: 2005-2008 Model(s): Allegro
BUS

Production Dates: Beginning: _____ Ending: _____

VIN Range: Beginning: List attached Ending: _____

Vehicle Type: _____ Bodystyle: _____

Descriptive information which characterizes/distinguishes the recalled vehicles from those model vehicles not included in the recall:

Make(s): _____ Model Years Involved: _____ Model(s): _____

Production Dates: Beginning: _____ Ending: _____

VIN Range: Beginning: _____ Ending: _____

Vehicle Type: _____ Bodystyle: _____

Descriptive information which characterizes/distinguishes the recalled vehicles from those model vehicles not included in the recall:

Make(s): _____ Model Years Involved: _____ Model(s): _____

Production Dates: Beginning: _____ Ending: _____

VIN Range: Beginning: _____ Ending: _____

Vehicle Type: _____ Bodystyle: _____

Descriptive information which characterizes/distinguishes the recalled vehicles from those model vehicles not included in the recall:

Identify the approximate percentage of the production of all the recalled models manufactured by your company between the inclusive dates of manufacture provided above, that the recalled model population represents. For example, if the recall involved Vehicles equipped with certain items of equipment from January 1, 1996 through April 1, 1997, then what was the percentage of the recalled Vehicles of all Vehicles manufactured during that time period.

*Please contact Freightliner
for this information.*

II. Identify the Recall Population

3. Furnish the total number of vehicles recalled potentially containing the defect or noncompliance.

Model	Year	Number of Vehicles Potentially Involved
Allegro Bus	2005	404
Allegro Bus	2006	555
Allegro Bus	2007	270
Allegro Bus	2008	63

Total Number Potentially Affected by the Recall: 1292

4. Furnish the approximate percentage of the total number of vehicles estimated to actually contain the defect or noncompliance: Do not know.

Identify and describe how the recall population was determined--in particular how the recalled models were selected and the basis for the beginning and final dates of manufacture of the recalled vehicles:

Freightliner gave us a list of Tiffin units involved.

III. Describe the Defect or Noncompliance

5. Describe the defect or noncompliance. The description should address the nature and physical location of the defect or noncompliance. Illustrations should be provided as appropriate.

Attached is the 573 that Freightliner
sent in.

Describe the cause(s) of the defect or noncompliance condition.

Describe the consequence(s) of the defect or noncompliance condition.

Identify any warning which can (a) precede or (b) occur.

If the defect or noncompliance is in a component or assembly purchased from a supplier, identify the supplier by corporate name and address.

Identify the name and title of the chief executive officer or knowledgeable representative of the supplier:

IV. Provide the Chronology in Determining the Defect/Noncompliance

If the recall is for a defect, complete item 6, otherwise item 7.

6. With respect to a defect, furnish a chronological summary (including dates) of all the principle events that were the basis for the determination of the defect. The summary should include, but not be limited to, the number of reports, accidents, injuries, fatalities, and warranty claims.

7. With respect to a noncompliance, identify and provide the test results or other data (in chronological order and including dates) on which the noncompliance was determined.

V. Identify the Remedy

8. A description of the manufacturer's program for remedying the defect or noncompliance. This program shall include a plan for reimbursing an owner or purchaser who incurred costs to obtain a remedy for the problem addressed by the recall within a reasonable time in advance of the manufacturer's notification of owners, purchasers and dealers, in accordance with §573.13 of this part. A manufacturer's plan may incorporate by reference a general reimbursement plan it previously submitted to NHTSA, together with information specific to the individual recall. Information required by §573.13 that is not in a general reimbursement plan shall be submitted in the manufacturer's report to NHTSA under this section. If a manufacturer submits one or more general reimbursement plans, the manufacturer shall update each plan every two years, in accordance with §573.13. The manufacturer's remedy program and reimbursement plans will be available for inspection by the public at NHTSA headquarters.

9. Furnish a description of the manufacturer's remedy for the defect or noncompliance. Clearly describe the differences between the recall condition and the remedy.

Clearly describe the distinguishing characteristics of the remedy component/assembly versus the recalled component/assembly.

Identify and describe how and when the recall condition was corrected in production. If the production remedy was identical to the recall remedy in the field, so state. If the product was discontinued, so state.

VI. Identify the Recall Schedule

10. Furnish a schedule or agenda (with specific dates) for notification to other manufacturers, dealers/retailers, and purchasers. Please, identify any foreseeable problems with implementing the recall.

We will provide any information
Freightliner needs to contact the
customers.

VII. Furnish Recall Communications

11. Furnish a final copy of all notices, bulletins, and other communications that relate directly to the defect or noncompliance and which are sent to more than one manufacturer, distributor, or purchaser. This includes all communications (including both original and follow-up) concerning this recall from the time your company determines the defect or noncompliance condition on, not just the initial notification. A DRAFT copy of the notification documents should be submitted to this office by Fax (202-366-7882) or by E-Mail to RMD.ODI@dot.gov for review prior to mailing.

Note that these documents are to be submitted separately from those provided in accordance with Part 579.5 requirements.

	A	B	C	D
1	Vin	Type	Model	
2	4UZAAHCY04C	BUS	05	
3	4UZABFCY04C	BUS	05	
4	4UZABFCY05C	BUS	05	
5	4UZABFCY05C	BUS	05	
6	4UZABFCY05C	BUS	05	
7	4UZABFCY05C	BUS	05	
8	4UZABFCY05C	BUS	05	
9	4UZABFCY05C	BUS	05	
10	4UZABFCY05C	BUS	05	
11	4UZABFCY05C	BUS	05	
12	4UZABFCY05C	BUS	05	
13	4UZABFCY05C	BUS	05	
14	4UZABFCY05C	BUS	05	
15	4UZABFCY05C	BUS	05	
16	4UZABFCY05C	BUS	05	
17	4UZABFCY05C	BUS	05	
18	4UZABFCY05C	BUS	05	
19	4UZABFCY05C	BUS	05	
20	4UZABFCY05C	BUS	05	
21	4UZABFCY05C	BUS	05	
22	4UZABFCY05C	BUS	05	
23	4UZABFCY05C	BUS	05	
24	4UZABFCY05C	BUS	05	
25	4UZABFCY05C	BUS	05	
26	4UZABFCY05C	BUS	05	
27	4UZABFCY05C	BUS	05	
28	4UZABFCY05C	BUS	05	
29	4UZABFCY05C	BUS	05	
30	4UZABFCY05C	BUS	05	
31	4UZABFCY05C	BUS	05	
32	4UZABFCY14C	BUS	05	
33	4UZABFCY14C	BUS	05	
34	4UZABFCY15C	BUS	05	
35	4UZABFCY15C	BUS	05	
36	4UZABFCY15C	BUS	05	
37	4UZABFCY15C	BUS	05	
38	4UZABFCY15C	BUS	05	
39	4UZABFCY15C	BUS	05	
40	4UZABFCY15C	BUS	05	
41	4UZABFCY15C	BUS	05	
42	4UZABFCY15C	BUS	05	
43	4UZABFCY15C	BUS	05	
44	4UZABFCY15C	BUS	05	
45	4UZABFCY15C	BUS	05	
46	4UZABFCY15C	BUS	05	
47	4UZABFCY15C	BUS	05	
48	4UZABFCY15C	BUS	05	
49	4UZABFCY15C	BUS	05	
50	4UZABFCY15C	BUS	05	
51	4UZABFCY15C	BUS	05	

	A	B	C	D
52	4UZABFCY15C	BUS	05	
53	4UZABFCY15C	BUS	05	
54	4UZABFCY15C	BUS	05	
55	4UZABFCY15C	BUS	05	
56	4UZABFCY15C	BUS	05	
57	4UZABFCY15C	BUS	05	
58	4UZABFCY15C	BUS	05	
59	4UZABFCY15C	BUS	05	
60	4UZABFCY15C	BUS	05	
61	4UZABFCY15C	BUS	05	
62	4UZABFCY15C	BUS	05	
63	4UZABFCY15C	BUS	05	
64	4UZABFCY24C	BUS	05	
65	4UZABFCY25C	BUS	05	
66	4UZABFCY25C	BUS	05	
67	4UZABFCY25C	BUS	05	
68	4UZABFCY25C	BUS	05	
69	4UZABFCY25C	BUS	05	
70	4UZABFCY25C	BUS	05	
71	4UZABFCY25C	BUS	05	
72	4UZABFCY25C	BUS	05	
73	4UZABFCY25C	BUS	05	
74	4UZABFCY25C	BUS	05	
75	4UZABFCY25C	BUS	05	
76	4UZABFCY25C	BUS	05	
77	4UZABFCY25C	BUS	05	
78	4UZABFCY25C	BUS	05	
79	4UZABFCY25C	BUS	05	
80	4UZABFCY25C	BUS	05	
81	4UZABFCY25C	BUS	05	
82	4UZABFCY25C	BUS	05	
83	4UZABFCY25C	BUS	05	
84	4UZABFCY25C	BUS	05	
85	4UZABFCY25C	BUS	05	
86	4UZABFCY25C	BUS	05	
87	4UZABFCY25C	BUS	05	
88	4UZABFCY25C	BUS	05	
89	4UZABFCY25C	BUS	05	
90	4UZABFCY25C	BUS	05	
91	4UZABFCY25C	BUS	05	
92	4UZABFCY25C	BUS	05	
93	4UZABFCY25C	BUS	05	
94	4UZABFCY25C	BUS	05	
95	4UZABFCY25C	BUS	05	
96	4UZABFCY34C	BUS	05	
97	4UZABFCY35C	BUS	05	
98	4UZABFCY35C	BUS	05	
99	4UZABFCY35C	BUS	05	
100	4UZABFCY35C	BUS	05	
101	4UZABFCY35C	BUS	05	
102	4UZABFCY35C	BUS	05	

	A	B	C	D
103	4UZABFCY35C	BUS	05	
104	4UZABFCY35C	BUS	05	
105	4UZABFCY35C	BUS	05	
106	4UZABFCY35C	BUS	05	
107	4UZABFCY35C	BUS	05	
108	4UZABFCY35C	BUS	05	
109	4UZABFCY35C	BUS	05	
110	4UZABFCY35C	BUS	05	
111	4UZABFCY35C	BUS	05	
112	4UZABFCY35C	BUS	05	
113	4UZABFCY35C	BUS	05	
114	4UZABFCY35C	BUS	05	
115	4UZABFCY35C	BUS	05	
116	4UZABFCY35C	BUS	05	
117	4UZABFCY35C	BUS	05	
118	4UZABFCY35C	BUS	05	
119	4UZABFCY35C	BUS	05	
120	4UZABFCY35C	BUS	05	
121	4UZABFCY35C	BUS	05	
122	4UZABFCY35C	BUS	05	
123	4UZABFCY35C	BUS	05	
124	4UZABFCY35C	BUS	05	
125	4UZABFCY44C	BUS	05	
126	4UZABFCY44C	BUS	05	
127	4UZABFCY44C	BUS	05	
128	4UZABFCY45C	BUS	05	
129	4UZABFCY45C	BUS	05	
130	4UZABFCY45C	BUS	05	
131	4UZABFCY45C	BUS	05	
132	4UZABFCY45C	BUS	05	
133	4UZABFCY45C	BUS	05	
134	4UZABFCY45C	BUS	05	
135	4UZABFCY45C	BUS	05	
136	4UZABFCY45C	BUS	05	
137	4UZABFCY45C	BUS	05	
138	4UZABFCY45C	BUS	05	
139	4UZABFCY45C	BUS	05	
140	4UZABFCY45C	BUS	05	
141	4UZABFCY45C	BUS	05	
142	4UZABFCY45C	BUS	05	
143	4UZABFCY45C	BUS	05	
144	4UZABFCY45C	BUS	05	
145	4UZABFCY45C	BUS	05	
146	4UZABFCY45C	BUS	05	
147	4UZABFCY45C	BUS	05	
148	4UZABFCY45C	BUS	05	
149	4UZABFCY45C	BUS	05	
150	4UZABFCY45C	BUS	05	
151	4UZABFCY45C	BUS	05	
152	4UZABFCY45C	BUS	05	
153	4UZABFCY45C	BUS	05	

	A	B	C	D
154	4UZABFCY45C	BUS	05	
155	4UZABFCY45C	BUS	05	
156	4UZABFCY45C	BUS	05	
157	4UZABFCY45C	BUS	05	
158	4UZABFCY54C	BUS	05	
159	4UZABFCY54C	BUS	05	
160	4UZABFCY55C	BUS	05	
161	4UZABFCY55C	BUS	05	
162	4UZABFCY55C	BUS	05	
163	4UZABFCY55C	BUS	05	
164	4UZABFCY55C	BUS	05	
165	4UZABFCY55C	BUS	05	
166	4UZABFCY55C	BUS	05	
167	4UZABFCY55C	BUS	05	
168	4UZABFCY55C	BUS	05	
169	4UZABFCY55C	BUS	05	
170	4UZABFCY55C	BUS	05	
171	4UZABFCY55C	BUS	05	
172	4UZABFCY55C	BUS	05	
173	4UZABFCY55C	BUS	05	
174	4UZABFCY55C	BUS	05	
175	4UZABFCY55C	BUS	05	
176	4UZABFCY55C	BUS	05	
177	4UZABFCY55C	BUS	05	
178	4UZABFCY55C	BUS	05	
179	4UZABFCY55C	BUS	05	
180	4UZABFCY55C	BUS	05	
181	4UZABFCY55C	BUS	05	
182	4UZABFCY55C	BUS	05	
183	4UZABFCY55C	BUS	05	
184	4UZABFCY55C	BUS	05	
185	4UZABFCY55C	BUS	05	
186	4UZABFCY55C	BUS	05	
187	4UZABFCY64C	BUS	05	
188	4UZABFCY64C	BUS	05	
189	4UZABFCY65C	BUS	05	
190	4UZABFCY65C	BUS	05	
191	4UZABFCY65C	BUS	05	
192	4UZABFCY65C	BUS	05	
193	4UZABFCY65C	BUS	05	
194	4UZABFCY65C	BUS	05	
195	4UZABFCY65C	BUS	05	
196	4UZABFCY65C	BUS	05	
197	4UZABFCY65C	BUS	05	
198	4UZABFCY65C	BUS	05	
199	4UZABFCY65C	BUS	05	
200	4UZABFCY65C	BUS	05	
201	4UZABFCY65C	BUS	05	
202	4UZABFCY65C	BUS	05	
203	4UZABFCY65C	BUS	05	
204	4UZABFCY65C	BUS	05	

	A	B	C	D
205	4UZABFCY65C	BUS	05	
206	4UZABFCY65C	BUS	05	
207	4UZABFCY65C	BUS	05	
208	4UZABFCY65C	BUS	05	
209	4UZABFCY65C	BUS	05	
210	4UZABFCY65C	BUS	05	
211	4UZABFCY65C	BUS	05	
212	4UZABFCY65C	BUS	05	
213	4UZABFCY65C	BUS	05	
214	4UZABFCY65C	BUS	05	
215	4UZABFCY65C	BUS	05	
216	4UZABFCY65C	BUS	05	
217	4UZABFCY65C	BUS	05	
218	4UZABFCY65C	BUS	05	
219	4UZABFCY74C	BUS	05	
220	4UZABFCY74C	BUS	05	
221	4UZABFCY75C	BUS	05	
222	4UZABFCY75C	BUS	05	
223	4UZABFCY75C	BUS	05	
224	4UZABFCY75C	BUS	05	
225	4UZABFCY75C	BUS	05	
226	4UZABFCY75C	BUS	05	
227	4UZABFCY75C	BUS	05	
228	4UZABFCY75C	BUS	05	
229	4UZABFCY75C	BUS	05	
230	4UZABFCY75C	BUS	05	
231	4UZABFCY75C	BUS	05	
232	4UZABFCY75C	BUS	05	
233	4UZABFCY75C	BUS	05	
234	4UZABFCY75C	BUS	05	
235	4UZABFCY75C	BUS	05	
236	4UZABFCY75C	BUS	05	
237	4UZABFCY75C	BUS	05	
238	4UZABFCY75C	BUS	05	
239	4UZABFCY75C	BUS	05	
240	4UZABFCY75C	BUS	05	
241	4UZABFCY75C	BUS	05	
242	4UZABFCY75C	BUS	05	
243	4UZABFCY75C	BUS	05	
244	4UZABFCY75C	BUS	05	
245	4UZABFCY75C	BUS	05	
246	4UZABFCY84C	BUS	05	
247	4UZABFCY84C	BUS	05	
248	4UZABFCY85C	BUS	05	
249	4UZABFCY85C	BUS	05	
250	4UZABFCY85C	BUS	05	
251	4UZABFCY85C	BUS	05	
252	4UZABFCY85C	BUS	05	
253	4UZABFCY85C	BUS	05	
254	4UZABFCY85C	BUS	05	
255	4UZABFCY85C	BUS	05	

	A	B	C	D
256	4UZABFC	BUS	05	
257	4UZABFC	BUS	05	
258	4UZABFC	BUS	05	
259	4UZABFC	BUS	05	
260	4UZABFC	BUS	05	
261	4UZABFC	BUS	05	
262	4UZABFC	BUS	05	
263	4UZABFC	BUS	05	
264	4UZABFC	BUS	05	
265	4UZABFC	BUS	05	
266	4UZABFC	BUS	05	
267	4UZABFC	BUS	05	
268	4UZABFC	BUS	05	
269	4UZABFC	BUS	05	
270	4UZABFC	BUS	05	
271	4UZABFC	BUS	05	
272	4UZABFC	BUS	05	
273	4UZABFC	BUS	05	
274	4UZABFC	BUS	05	
275	4UZABFC	BUS	05	
276	4UZABFC	BUS	05	
277	4UZABFC	BUS	05	
278	4UZABFC	BUS	05	
279	4UZABFC	BUS	05	
280	4UZABFC	BUS	05	
281	4UZABFC	BUS	05	
282	4UZABFC	BUS	05	
283	4UZABFC	BUS	05	
284	4UZABFC	BUS	05	
285	4UZABFC	BUS	05	
286	4UZABFC	BUS	05	
287	4UZABFC	BUS	05	
288	4UZABFC	BUS	05	
289	4UZABFC	BUS	05	
290	4UZABFC	BUS	05	
291	4UZABFC	BUS	05	
292	4UZABFC	BUS	05	
293	4UZABFC	BUS	05	
294	4UZABFC	BUS	05	
295	4UZABFC	BUS	05	
296	4UZABFC	BUS	05	
297	4UZABFC	BUS	05	
298	4UZABFC	BUS	05	
299	4UZABFC	BUS	05	
300	4UZABFC	BUS	05	
301	4UZABFC	BUS	05	
302	4UZABFC	BUS	05	
303	4UZABFC	BUS	05	
304	4UZABFC	BUS	05	
305	4UZABFC	BUS	05	
306	4UZABFC	BUS	05	

	A	B	C	D
307	4UZABFC	BUS	05	
308	4UZABFC	BUS	05	
309	4UZABFC	BUS	05	
310	4UZABFC	BUS	05	
311	4UZABFC	BUS	05	
312	4UZABFC	BUS	05	
313	4UZABFC	BUS	05	
314	4UZABFC	BUS	05	
315	4UZABFC	BUS	05	
316	4UZABFC	BUS	05	
317	4UZABFC	BUS	05	
318	4UZABFC	BUS	05	
319	4UZABFC	BUS	05	
320	4UZABFC	BUS	05	
321	4UZABFC	BUS	05	
322	4UZABFC	BUS	05	
323	4UZABFC	BUS	05	
324	4UZABFC	BUS	05	
325	4UZABFC	BUS	05	
326	4UZABFC	BUS	05	
327	4UZABFC	BUS	05	
328	4UZABFC	BUS	05	
329	4UZABFC	BUS	05	
330	4UZABFC	BUS	05	
331	4UZABFC	BUS	05	
332	4UZABFC	BUS	05	
333	4UZABFC	BUS	05	
334	4UZACHC	BUS	05	
335	4UZACHC	BUS	05	
336	4UZACHC	BUS	05	
337	4UZACHC	BUS	05	
338	4UZACHC	BUS	05	
339	4UZACHC	BUS	05	
340	4UZACHC	BUS	05	
341	4UZACHC	BUS	05	
342	4UZACHC	BUS	05	
343	4UZACHC	BUS	05	
344	4UZACHC	BUS	05	
345	4UZACHC	BUS	05	
346	4UZACHC	BUS	05	
347	4UZACHC	BUS	05	
348	4UZACHC	BUS	05	
349	4UZACHC	BUS	05	
350	4UZACHC	BUS	05	
351	4UZACHC	BUS	05	
352	4UZACHC	BUS	05	
353	4UZACHC	BUS	05	
354	4UZACHC	BUS	05	
355	4UZACHC	BUS	05	
356	4UZACHC	BUS	05	
357	4UZACHC	BUS	05	

	A	B	C	D
358	4UZACHC	BUS	05	
359	4UZACHC	BUS	05	
360	4UZACHC	BUS	05	
361	4UZACHC	BUS	05	
362	4UZACHC	BUS	05	
363	4UZACHC	BUS	05	
364	4UZACHC	BUS	05	
365	4UZACHC	BUS	05	
366	4UZACHC	BUS	05	
367	4UZACHC	BUS	05	
368	4UZACHC	BUS	05	
369	4UZACHC	BUS	05	
370	4UZFCHC	BUS	05	
371	4UZFCHC	BUS	05	
372	4UZFCHC	BUS	05	
373	4UZFCHC	BUS	05	
374	4UZFCHC	BUS	05	
375	4UZFCHC	BUS	05	
376	4UZFCHC	BUS	05	
377	4UZFCHC	BUS	05	
378	4UZFCHC	BUS	05	
379	4UZFCHC	BUS	05	
380	4UZFCHC	BUS	05	
381	4UZFCHC	BUS	05	
382	4UZFCHC	BUS	05	
383	4UZFCHC	BUS	05	
384	4UZFCHC	BUS	05	
385	4UZFCHC	BUS	05	
386	4UZFCHC	BUS	05	
387	4UZFCHC	BUS	05	
388	4UZFCHC	BUS	05	
389	4UZFCHC	BUS	05	
390	4UZFCHC	BUS	05	
391	4UZFCHC	BUS	05	
392	4UZFCHC	BUS	05	
393	4UZFCHC	BUS	05	
394	4UZFCHC	BUS	05	
395	4UZFCHC	BUS	05	
396	4UZFCHC	BUS	05	
397	4UZFCHC	BUS	05	
398	4UZFCHC	BUS	05	
399	4UZFCHC	BUS	05	
400	4UZFCHC	BUS	05	
401	4UZFCHC	BUS	05	
402	4UZFCHC	BUS	05	
403	4UZFCHC	BUS	05	
404	4UZACHC	BUS	05	
405	4UZABFC	BUS	05	
406	4UZABFC	BUS	06	
407	4UZABFC	BUS	06	
408	4UZABFC	BUS	06	

	A	B	C	D
409	4UZACHC	BUS	06	
410	4UZACHC	BUS	06	
411	4UZACHC	BUS	06	
412	4UZACHC	BUS	06	
413	4UZACHC	BUS	06	
414	4UZACHC	BUS	06	
415	4UZACHC	BUS	06	
416	4UZACHC	BUS	06	
417	4UZACHC	BUS	06	
418	4UZACHC	BUS	06	
419	4UZACHC	BUS	06	
420	4UZACHC	BUS	06	
421	4UZACHC	BUS	06	
422	4UZACHC	BUS	06	
423	4UZACHC	BUS	06	
424	4UZACHC	BUS	06	
425	4UZACHC	BUS	06	
426	4UZACHC	BUS	06	
427	4UZACHC	BUS	06	
428	4UZACHC	BUS	06	
429	4UZACHC	BUS	06	
430	4UZACHC	BUS	06	
431	4UZACHC	BUS	06	
432	4UZACHC	BUS	06	
433	4UZACHC	BUS	06	
434	4UZACHC	BUS	06	
435	4UZACHC	BUS	06	
436	4UZACHC	BUS	06	
437	4UZACHC	BUS	06	
438	4UZACHC	BUS	06	
439	4UZACHC	BUS	06	
440	4UZACHC	BUS	06	
441	4UZACHC	BUS	06	
442	4UZACHC	BUS	06	
443	4UZACHC	BUS	06	
444	4UZACHC	BUS	06	
445	4UZACHC	BUS	06	
446	4UZACHC	BUS	06	
447	4UZACHC	BUS	06	
448	4UZACHC	BUS	06	
449	4UZACHC	BUS	06	
450	4UZACHC	BUS	06	
451	4UZACHC	BUS	06	
452	4UZACHC	BUS	06	
453	4UZACHC	BUS	06	
454	4UZACHC	BUS	06	
455	4UZACHC	BUS	06	
456	4UZACHC	BUS	06	
457	4UZACHC	BUS	06	
458	4UZACHC	BUS	06	
459	4UZACHC	BUS	06	

	A	B	C	D
460	4UZACHC	BUS	06	
461	4UZACHC	BUS	06	
462	4UZACHC	BUS	06	
463	4UZACHC	BUS	06	
464	4UZACHC	BUS	06	
465	4UZACHC	BUS	06	
466	4UZACHC	BUS	06	
467	4UZACHC	BUS	06	
468	4UZACHC	BUS	06	
469	4UZACHC	BUS	06	
470	4UZACHC	BUS	06	
471	4UZACHC	BUS	06	
472	4UZACHC	BUS	06	
473	4UZACHC	BUS	06	
474	4UZACHC	BUS	06	
475	4UZACHC	BUS	06	
476	4UZACHC	BUS	06	
477	4UZACHC	BUS	06	
478	4UZACHC	BUS	06	
479	4UZACHC	BUS	06	
480	4UZACHC	BUS	06	
481	4UZACHC	BUS	06	
482	4UZACHC	BUS	06	
483	4UZACHC	BUS	06	
484	4UZACHC	BUS	06	
485	4UZACHC	BUS	06	
486	4UZACHC	BUS	06	
487	4UZACHC	BUS	06	
488	4UZACHC	BUS	06	
489	4UZACHC	BUS	06	
490	4UZACHC	BUS	06	
491	4UZACHC	BUS	06	
492	4UZACHC	BUS	06	
493	4UZACHC	BUS	06	
494	4UZACHC	BUS	06	
495	4UZACHC	BUS	06	
496	4UZACHC	BUS	06	
497	4UZACHC	BUS	06	
498	4UZACHC	BUS	06	
499	4UZACHC	BUS	06	
500	4UZACHC	BUS	06	
501	4UZACHC	BUS	06	
502	4UZACHC	BUS	06	
503	4UZACHC	BUS	06	
504	4UZACHC	BUS	06	
505	4UZACHC	BUS	06	
506	4UZACHC	BUS	06	
507	4UZACHC	BUS	06	
508	4UZACHC	BUS	06	
509	4UZACHC	BUS	06	
510	4UZACHC	BUS	06	

	A	B	C	D
511	4UZACHCY26C	BUS	06	
512	4UZACHCY26C	BUS	06	
513	4UZACHCY26C	BUS	06	
514	4UZACHCY26C	BUS	06	
515	4UZACHCY26C	BUS	06	
516	4UZACHCY26C	BUS	06	
517	4UZACHCY26C	BUS	06	
518	4UZACHCY26C	BUS	06	
519	4UZACHCY27C	BUS	06	
520	4UZACHCY27C	BUS	06	
521	4UZACHCY27C	BUS	06	
522	4UZACHCY27C	BUS	06	
523	4UZACHCY27C	BUS	06	
524	4UZACHCY35C	BUS	06	
525	4UZACHCY36C	BUS	06	
526	4UZACHCY36C	BUS	06	
527	4UZACHCY36C	BUS	06	
528	4UZACHCY36C	BUS	06	
529	4UZACHCY36C	BUS	06	
530	4UZACHCY36C	BUS	06	
531	4UZACHCY36C	BUS	06	
532	4UZACHCY36C	BUS	06	
533	4UZACHCY36C	BUS	06	
534	4UZACHCY36C	BUS	06	
535	4UZACHCY36C	BUS	06	
536	4UZACHCY36C	BUS	06	
537	4UZACHCY36C	BUS	06	
538	4UZACHCY36C	BUS	06	
539	4UZACHCY36C	BUS	06	
540	4UZACHCY36C	BUS	06	
541	4UZACHCY36C	BUS	06	
542	4UZACHCY36C	BUS	06	
543	4UZACHCY36C	BUS	06	
544	4UZACHCY36C	BUS	06	
545	4UZACHCY36C	BUS	06	
546	4UZACHCY36C	BUS	06	
547	4UZACHCY36C	BUS	06	
548	4UZACHCY36C	BUS	06	
549	4UZACHCY36C	BUS	06	
550	4UZACHCY36C	BUS	06	
551	4UZACHCY36C	BUS	06	
552	4UZACHCY36C	BUS	06	
553	4UZACHCY36C	BUS	06	
554	4UZACHCY36C	BUS	06	
555	4UZACHCY36C	BUS	06	
556	4UZACHCY36C	BUS	06	
557	4UZACHCY36C	BUS	06	
558	4UZACHCY36C	BUS	06	
559	4UZACHCY37C	BUS	06	
560	4UZACHCY37C	BUS	06	
561	4UZACHCY37C	BUS	06	

	A	B	C	D
562	4UZACHCY45C	BUS	06	
563	4UZACHCY45C	BUS	06	
564	4UZACHCY45C	BUS	06	
565	4UZACHCY46C	BUS	06	
566	4UZACHCY46C	BUS	06	
567	4UZACHCY46C	BUS	06	
568	4UZACHCY46C	BUS	06	
569	4UZACHCY46C	BUS	06	
570	4UZACHCY46C	BUS	06	
571	4UZACHCY46C	BUS	06	
572	4UZACHCY46C	BUS	06	
573	4UZACHCY46C	BUS	06	
574	4UZACHCY46C	BUS	06	
575	4UZACHCY46C	BUS	06	
576	4UZACHCY46C	BUS	06	
577	4UZACHCY46C	BUS	06	
578	4UZACHCY46C	BUS	06	
579	4UZACHCY46C	BUS	06	
580	4UZACHCY46C	BUS	06	
581	4UZACHCY46C	BUS	06	
582	4UZACHCY46C	BUS	06	
583	4UZACHCY46C	BUS	06	
584	4UZACHCY46C	BUS	06	
585	4UZACHCY46C	BUS	06	
586	4UZACHCY46C	BUS	06	
587	4UZACHCY46C	BUS	06	
588	4UZACHCY46C	BUS	06	
589	4UZACHCY46C	BUS	06	
590	4UZACHCY46C	BUS	06	
591	4UZACHCY46C	BUS	06	
592	4UZACHCY46C	BUS	06	
593	4UZACHCY46C	BUS	06	
594	4UZACHCY47C	BUS	06	
595	4UZACHCY47C	BUS	06	
596	4UZACHCY55C	BUS	06	
597	4UZACHCY55C	BUS	06	
598	4UZACHCY56C	BUS	06	
599	4UZACHCY56C	BUS	06	
600	4UZACHCY56C	BUS	06	
601	4UZACHCY56C	BUS	06	
602	4UZACHCY56C	BUS	06	
603	4UZACHCY56C	BUS	06	
604	4UZACHCY56C	BUS	06	
605	4UZACHCY56C	BUS	06	
606	4UZACHCY56C	BUS	06	
607	4UZACHCY56C	BUS	06	
608	4UZACHCY56C	BUS	06	
609	4UZACHCY56C	BUS	06	
610	4UZACHCY56C	BUS	06	
611	4UZACHCY56C	BUS	06	
612	4UZACHCY56C	BUS	06	

	A	B	C	D
613	4UZACHCY56C	BUS	06	
614	4UZACHCY56C	BUS	06	
615	4UZACHCY56C	BUS	06	
616	4UZACHCY56C	BUS	06	
617	4UZACHCY56C	BUS	06	
618	4UZACHCY56C	BUS	06	
619	4UZACHCY56C	BUS	06	
620	4UZACHCY56C	BUS	06	
621	4UZACHCY56C	BUS	06	
622	4UZACHCY56C	BUS	06	
623	4UZACHCY56C	BUS	06	
624	4UZACHCY56C	BUS	06	
625	4UZACHCY56C	BUS	06	
626	4UZACHCY56C	BUS	06	
627	4UZACHCY56C	BUS	06	
628	4UZACHCY56C	BUS	06	
629	4UZACHCY57C	BUS	06	
630	4UZACHCY57C	BUS	06	
631	4UZACHCY57C	BUS	06	
632	4UZACHCY57C	BUS	06	
633	4UZACHCY57C	BUS	06	
634	4UZACHCY65C	BUS	06	
635	4UZACHCY65C	BUS	06	
636	4UZACHCY66C	BUS	06	
637	4UZACHCY66C	BUS	06	
638	4UZACHCY66C	BUS	06	
639	4UZACHCY66C	BUS	06	
640	4UZACHCY66C	BUS	06	
641	4UZACHCY66C	BUS	06	
642	4UZACHCY66C	BUS	06	
643	4UZACHCY66C	BUS	06	
644	4UZACHCY66C	BUS	06	
645	4UZACHCY66C	BUS	06	
646	4UZACHCY66C	BUS	06	
647	4UZACHCY66C	BUS	06	
648	4UZACHCY66C	BUS	06	
649	4UZACHCY66C	BUS	06	
650	4UZACHCY66C	BUS	06	
651	4UZACHCY66C	BUS	06	
652	4UZACHCY66C	BUS	06	
653	4UZACHCY66C	BUS	06	
654	4UZACHCY66C	BUS	06	
655	4UZACHCY66C	BUS	06	
656	4UZACHCY66C	BUS	06	
657	4UZACHCY66C	BUS	06	
658	4UZACHCY66C	BUS	06	
659	4UZACHCY66C	BUS	06	
660	4UZACHCY66C	BUS	06	
661	4UZACHCY66C	BUS	06	
662	4UZACHCY66C	BUS	06	
663	4UZACHCY66C	BUS	06	

	A	B	C	D
664	4UZACHC	BUS	06	
665	4UZACHC	BUS	06	
666	4UZACHC	BUS	06	
667	4UZACHC	BUS	06	
668	4UZACHC	BUS	06	
669	4UZACHC	BUS	06	
670	4UZACHC	BUS	06	
671	4UZACHC	BUS	06	
672	4UZACHC	BUS	06	
673	4UZACHC	BUS	06	
674	4UZACHC	BUS	06	
675	4UZACHC	BUS	06	
676	4UZACHC	BUS	06	
677	4UZACHC	BUS	06	
678	4UZACHC	BUS	06	
679	4UZACHC	BUS	06	
680	4UZACHC	BUS	06	
681	4UZACHC	BUS	06	
682	4UZACHC	BUS	06	
683	4UZACHC	BUS	06	
684	4UZACHC	BUS	06	
685	4UZACHC	BUS	06	
686	4UZACHC	BUS	06	
687	4UZACHC	BUS	06	
688	4UZACHC	BUS	06	
689	4UZACHC	BUS	06	
690	4UZACHC	BUS	06	
691	4UZACHC	BUS	06	
692	4UZACHC	BUS	06	
693	4UZACHC	BUS	06	
694	4UZACHC	BUS	06	
695	4UZACHC	BUS	06	
696	4UZACHC	BUS	06	
697	4UZACHC	BUS	06	
698	4UZACHC	BUS	06	
699	4UZACHC	BUS	06	
700	4UZACHC	BUS	06	
701	4UZACHC	BUS	06	
702	4UZACHC	BUS	06	
703	4UZACHC	BUS	06	
704	4UZACHC	BUS	06	
705	4UZACHC	BUS	06	
706	4UZACHC	BUS	06	
707	4UZACHC	BUS	06	
708	4UZACHC	BUS	06	
709	4UZACHC	BUS	06	
710	4UZACHC	BUS	06	
711	4UZACHC	BUS	06	
712	4UZACHC	BUS	06	
713	4UZACHC	BUS	06	
714	4UZACHC	BUS	06	

	A	B	C	D
715	4UZACHCY86C	BUS	06	
716	4UZACHCY86C	BUS	06	
717	4UZACHCY86C	BUS	06	
718	4UZACHCY86C	BUS	06	
719	4UZACHCY86C	BUS	06	
720	4UZACHCY86C	BUS	06	
721	4UZACHCY86C	BUS	06	
722	4UZACHCY86C	BUS	06	
723	4UZACHCY86C	BUS	06	
724	4UZACHCY86C	BUS	06	
725	4UZACHCY86C	BUS	06	
726	4UZACHCY86C	BUS	06	
727	4UZACHCY86C	BUS	06	
728	4UZACHCY86C	BUS	06	
729	4UZACHCY86C	BUS	06	
730	4UZACHCY86C	BUS	06	
731	4UZACHCY86C	BUS	06	
732	4UZACHCY86C	BUS	06	
733	4UZACHCY86C	BUS	06	
734	4UZACHCY86C	BUS	06	
735	4UZACHCY86C	BUS	06	
736	4UZACHCY86C	BUS	06	
737	4UZACHCY86C	BUS	06	
738	4UZACHCY86C	BUS	06	
739	4UZACHCY86C	BUS	06	
740	4UZACHCY86C	BUS	06	
741	4UZACHCY86C	BUS	06	
742	4UZACHCY86C	BUS	06	
743	4UZACHCY86C	BUS	06	
744	4UZACHCY86C	BUS	06	
745	4UZACHCY86C	BUS	06	
746	4UZACHCY86C	BUS	06	
747	4UZACHCY87C	BUS	06	
748	4UZACHCY87C	BUS	06	
749	4UZACHCY87C	BUS	06	
750	4UZACHCY95C	BUS	06	
751	4UZACHCY95C	BUS	06	
752	4UZACHCY95C	BUS	06	
753	4UZACHCY96C	BUS	06	
754	4UZACHCY96C	BUS	06	
755	4UZACHCY96C	BUS	06	
756	4UZACHCY96C	BUS	06	
757	4UZACHCY96C	BUS	06	
758	4UZACHCY96C	BUS	06	
759	4UZACHCY96C	BUS	06	
760	4UZACHCY96C	BUS	06	
761	4UZACHCY96C	BUS	06	
762	4UZACHCY96C	BUS	06	
763	4UZACHCY96C	BUS	06	
764	4UZACHCY96C	BUS	06	
765	4UZACHCY96C	BUS	06	

	A	B	C	D
766	4UZACHCY96C	BUS	06	
767	4UZACHCY96C	BUS	06	
768	4UZACHCY96C	BUS	06	
769	4UZACHCY96C	BUS	06	
770	4UZACHCY96C	BUS	06	
771	4UZACHCY96C	BUS	06	
772	4UZACHCY96C	BUS	06	
773	4UZACHCY96C	BUS	06	
774	4UZACHCY96C	BUS	06	
775	4UZACHCY96C	BUS	06	
776	4UZACHCY96C	BUS	06	
777	4UZACHCY96C	BUS	06	
778	4UZACHCY96C	BUS	06	
779	4UZACHCY96C	BUS	06	
780	4UZACHCY96C	BUS	06	
781	4UZACHCY96C	BUS	06	
782	4UZACHCY97C	BUS	06	
783	4UZACHCY97C	BUS	06	
784	4UZACHCYX5C	BUS	06	
785	4UZACHCYX5C	BUS	06	
786	4UZACHCYX6C	BUS	06	
787	4UZACHCYX6C	BUS	06	
788	4UZACHCYX6C	BUS	06	
789	4UZACHCYX6C	BUS	06	
790	4UZACHCYX6C	BUS	06	
791	4UZACHCYX6C	BUS	06	
792	4UZACHCYX6C	BUS	06	
793	4UZACHCYX6C	BUS	06	
794	4UZACHCYX6C	BUS	06	
795	4UZACHCYX6C	BUS	06	
796	4UZACHCYX6C	BUS	06	
797	4UZACHCYX6C	BUS	06	
798	4UZACHCYX6C	BUS	06	
799	4UZACHCYX6C	BUS	06	
800	4UZACHCYX6C	BUS	06	
801	4UZACHCYX6C	BUS	06	
802	4UZACHCYX6C	BUS	06	
803	4UZACHCYX6C	BUS	06	
804	4UZACHCYX6C	BUS	06	
805	4UZACHCYX6C	BUS	06	
806	4UZACHCYX6C	BUS	06	
807	4UZACHCYX6C	BUS	06	
808	4UZACHCYX6C	BUS	06	
809	4UZACHCYX6C	BUS	06	
810	4UZACHCYX6C	BUS	06	
811	4UZACHCYX6C	BUS	06	
812	4UZACHCYX6C	BUS	06	
813	4UZACHCYX6C	BUS	06	
814	4UZACHCYX6C	BUS	06	
815	4UZACHCYX6C	BUS	06	
816	4UZACHCYX6C	BUS	06	

	A	B	C	D
817	4UZACHC	BUS	06	
818	4UZACHC	BUS	06	
819	4UZACHC	BUS	06	
820	4UZACHC	BUS	06	
821	4UZACHC	BUS	06	
822	4UZACHC	BUS	06	
823	4UZACHC	BUS	06	
824	4UZACHC	BUS	06	
825	4UZACHC	BUS	06	
826	4UZACHC	BUS	06	
827	4UZFCHC	BUS	06	
828	4UZFCHC	BUS	06	
829	4UZFCHC	BUS	06	
830	4UZFCHC	BUS	06	
831	4UZFCHC	BUS	06	
832	4UZFCHC	BUS	06	
833	4UZFCHC	BUS	06	
834	4UZFCHC	BUS	06	
835	4UZFCHC	BUS	06	
836	4UZFCHC	BUS	06	
837	4UZFCHC	BUS	06	
838	4UZFCHC	BUS	06	
839	4UZFCHC	BUS	06	
840	4UZFCHC	BUS	06	
841	4UZFCHC	BUS	06	
842	4UZFCHC	BUS	06	
843	4UZFCHC	BUS	06	
844	4UZFCHC	BUS	06	
845	4UZFCHC	BUS	06	
846	4UZFCHC	BUS	06	
847	4UZFCHC	BUS	06	
848	4UZFCHC	BUS	06	
849	4UZFCHC	BUS	06	
850	4UZFCHC	BUS	06	
851	4UZFCHC	BUS	06	
852	4UZFCHC	BUS	06	
853	4UZFCHC	BUS	06	
854	4UZFCHC	BUS	06	
855	4UZFCHC	BUS	06	
856	4UZFCHC	BUS	06	
857	4UZFCHC	BUS	06	
858	4UZFCHC	BUS	06	
859	4UZFCHC	BUS	06	
860	4UZFCHC	BUS	06	
861	4UZFCHC	BUS	06	
862	4UZFCHC	BUS	06	
863	4UZFCHC	BUS	06	
864	4UZFCHC	BUS	06	
865	4UZFCHC	BUS	06	
866	4UZFCHC	BUS	06	
867	4UZFCHC	BUS	06	

	A	B	C	D
868	4UZFCHC	BUS	06	
869	4UZFCHC	BUS	06	
870	4UZFCHC	BUS	06	
871	4UZFCHC	BUS	06	
872	4UZFCHC	BUS	06	
873	4UZFCHC	BUS	06	
874	4UZFCHC	BUS	06	
875	4UZFCHC	BUS	06	
876	4UZFCHC	BUS	06	
877	4UZFCHC	BUS	06	
878	4UZFCHC	BUS	06	
879	4UZFCHC	BUS	06	
880	4UZFCHC	BUS	06	
881	4UZFCHC	BUS	06	
882	4UZFCHC	BUS	06	
883	4UZFCHC	BUS	06	
884	4UZFCHC	BUS	06	
885	4UZFCHC	BUS	06	
886	4UZFCHC	BUS	06	
887	4UZFCHC	BUS	06	
888	4UZFCHC	BUS	06	
889	4UZFCHC	BUS	06	
890	4UZFCHC	BUS	06	
891	4UZFCHC	BUS	06	
892	4UZFCHC	BUS	06	
893	4UZFCHC	BUS	06	
894	4UZFCHC	BUS	06	
895	4UZFCHC	BUS	06	
896	4UZFCHC	BUS	06	
897	4UZFCHC	BUS	06	
898	4UZFCHC	BUS	06	
899	4UZFCHC	BUS	06	
900	4UZFCHC	BUS	06	
901	4UZFCHC	BUS	06	
902	4UZFCHC	BUS	06	
903	4UZFCHC	BUS	06	
904	4UZFCHC	BUS	06	
905	4UZFCHC	BUS	06	
906	4UZFCHC	BUS	06	
907	4UZFCHC	BUS	06	
908	4UZFCHC	BUS	06	
909	4UZFCHC	BUS	06	
910	4UZFCHC	BUS	06	
911	4UZFCHC	BUS	06	
912	4UZFCHC	BUS	06	
913	4UZFCHC	BUS	06	
914	4UZFCHC	BUS	06	
915	4UZFCHC	BUS	06	
916	4UZFCHC	BUS	06	
917	4UZFCHC	BUS	06	
918	4UZFCHC	BUS	06	

	A	B	C	D
919	4UZFCHCY76C	BUS	06	
920	4UZFCHCY76C	BUS	06	
921	4UZFCHCY76C	BUS	06	
922	4UZFCHCY76C	BUS	06	
923	4UZFCHCY76C	BUS	06	
924	4UZFCHCY86C	BUS	06	
925	4UZFCHCY86C	BUS	06	
926	4UZFCHCY86C	BUS	06	
927	4UZFCHCY86C	BUS	06	
928	4UZFCHCY86C	BUS	06	
929	4UZFCHCY86C	BUS	06	
930	4UZFCHCY86C	BUS	06	
931	4UZFCHCY86C	BUS	06	
932	4UZFCHCY86C	BUS	06	
933	4UZFCHCY86C	BUS	06	
934	4UZFCHCY86C	BUS	06	
935	4UZFCHCY86C	BUS	06	
936	4UZFCHCY96C	BUS	06	
937	4UZFCHCY96C	BUS	06	
938	4UZFCHCY96C	BUS	06	
939	4UZFCHCY96C	BUS	06	
940	4UZFCHCY96C	BUS	06	
941	4UZFCHCY96C	BUS	06	
942	4UZFCHCY96C	BUS	06	
943	4UZFCHCY96C	BUS	06	
944	4UZFCHCY96C	BUS	06	
945	4UZFCHCY96C	BUS	06	
946	4UZFCHCY96C	BUS	06	
947	4UZFCHCY96C	BUS	06	
948	4UZFCHCY96C	BUS	06	
949	4UZFCHCYX6C	BUS	06	
950	4UZFCHCYX6C	BUS	06	
951	4UZFCHCYX6C	BUS	06	
952	4UZFCHCYX6C	BUS	06	
953	4UZFCHCYX6C	BUS	06	
954	4UZFCHCYX6C	BUS	06	
955	4UZFCHCYX6C	BUS	06	
956	4UZFCHCYX6C	BUS	06	
957	4UZFCHCYX6C	BUS	06	
958	4UZFCHCYX6C	BUS	06	
959	4UZABFCY25C'	BUS	06	
960	4UZABFCYX5C	BUS	06	
961	4UZACHCY06C	BUS	07	
962	4UZACHCY07C	BUS	07	
963	4UZACHCY07C	BUS	07	
964	4UZACHCY07C	BUS	07	
965	4UZACHCY07C	BUS	07	
966	4UZACHCY07C	BUS	07	
967	4UZACHCY07C	BUS	07	
968	4UZACHCY07C	BUS	07	
969	4UZACHCY07C	BUS	07	

	A	B	C	D
970	4UZACHCY07C	BUS	07	
971	4UZACHCY07C	BUS	07	
972	4UZACHCY07C	BUS	07	
973	4UZACHCY07C	BUS	07	
974	4UZACHCY07C	BUS	07	
975	4UZACHCY07C	BUS	07	
976	4UZACHCY07C	BUS	07	
977	4UZACHCY07C	BUS	07	
978	4UZACHCY07C	BUS	07	
979	4UZACHCY07C	BUS	07	
980	4UZACHCY07C	BUS	07	
981	4UZACHCY07C	BUS	07	
982	4UZACHCY07C	BUS	07	
983	4UZACHCY07C	BUS	07	
984	4UZACHCY17C	BUS	07	
985	4UZACHCY17C	BUS	07	
986	4UZACHCY17C	BUS	07	
987	4UZACHCY17C	BUS	07	
988	4UZACHCY17C	BUS	07	
989	4UZACHCY17C	BUS	07	
990	4UZACHCY17C	BUS	07	
991	4UZACHCY17C	BUS	07	
992	4UZACHCY17C	BUS	07	
993	4UZACHCY17C	BUS	07	
994	4UZACHCY17C	BUS	07	
995	4UZACHCY17C	BUS	07	
996	4UZACHCY17C	BUS	07	
997	4UZACHCY17C	BUS	07	
998	4UZACHCY17C	BUS	07	
999	4UZACHCY17C	BUS	07	
1000	4UZACHCY27C	BUS	07	
1001	4UZACHCY27C	BUS	07	
1002	4UZACHCY27C	BUS	07	
1003	4UZACHCY27C	BUS	07	
1004	4UZACHCY27C	BUS	07	
1005	4UZACHCY27C	BUS	07	
1006	4UZACHCY27C	BUS	07	
1007	4UZACHCY27C	BUS	07	
1008	4UZACHCY27C	BUS	07	
1009	4UZACHCY27C	BUS	07	
1010	4UZACHCY27C	BUS	07	
1011	4UZACHCY27C	BUS	07	
1012	4UZACHCY27C	BUS	07	
1013	4UZACHCY27C	BUS	07	
1014	4UZACHCY27C	BUS	07	
1015	4UZACHCY27C	BUS	07	
1016	4UZACHCY27C	BUS	07	
1017	4UZACHCY27C	BUS	07	
1018	4UZACHCY27C	BUS	07	
1019	4UZACHCY27C	BUS	07	
1020	4UZACHCY27C	BUS	07	

	A	B	C	D
1021	4UZACHCY27C	BUS	07	
1022	4UZACHCY37C	BUS	07	
1023	4UZACHCY37C	BUS	07	
1024	4UZACHCY37C	BUS	07	
1025	4UZACHCY37C	BUS	07	
1026	4UZACHCY37C	BUS	07	
1027	4UZACHCY37C	BUS	07	
1028	4UZACHCY37C	BUS	07	
1029	4UZACHCY37C	BUS	07	
1030	4UZACHCY37C	BUS	07	
1031	4UZACHCY37C	BUS	07	
1032	4UZACHCY37C	BUS	07	
1033	4UZACHCY37C	BUS	07	
1034	4UZACHCY37C	BUS	07	
1035	4UZACHCY37C	BUS	07	
1036	4UZACHCY37C	BUS	07	
1037	4UZACHCY37C	BUS	07	
1038	4UZACHCY37C	BUS	07	
1039	4UZACHCY37C	BUS	07	
1040	4UZACHCY37C	BUS	07	
1041	4UZACHCY46C	BUS	07	
1042	4UZACHCY47C	BUS	07	
1043	4UZACHCY47C	BUS	07	
1044	4UZACHCY47C	BUS	07	
1045	4UZACHCY47C	BUS	07	
1046	4UZACHCY47C	BUS	07	
1047	4UZACHCY47C	BUS	07	
1048	4UZACHCY47C	BUS	07	
1049	4UZACHCY47C	BUS	07	
1050	4UZACHCY47C	BUS	07	
1051	4UZACHCY47C	BUS	07	
1052	4UZACHCY47C	BUS	07	
1053	4UZACHCY47C	BUS	07	
1054	4UZACHCY47C	BUS	07	
1055	4UZACHCY47C	BUS	07	
1056	4UZACHCY47C	BUS	07	
1057	4UZACHCY47C	BUS	07	
1058	4UZACHCY47C	BUS	07	
1059	4UZACHCY47C	BUS	07	
1060	4UZACHCY47C	BUS	07	
1061	4UZACHCY47C	BUS	07	
1062	4UZACHCY57C	BUS	07	
1063	4UZACHCY57C	BUS	07	
1064	4UZACHCY57C	BUS	07	
1065	4UZACHCY57C	BUS	07	
1066	4UZACHCY57C	BUS	07	
1067	4UZACHCY57C	BUS	07	
1068	4UZACHCY57C	BUS	07	
1069	4UZACHCY57C	BUS	07	
1070	4UZACHCY57C	BUS	07	
1071	4UZACHCY57C	BUS	07	

	A	B	C	D
1072	4UZACHCY57C	BUS	07	
1073	4UZACHCY57C	BUS	07	
1074	4UZACHCY57C	BUS	07	
1075	4UZACHCY57C	BUS	07	
1076	4UZACHCY57C	BUS	07	
1077	4UZACHCY67C	BUS	07	
1078	4UZACHCY67C	BUS	07	
1079	4UZACHCY67C	BUS	07	
1080	4UZACHCY67C	BUS	07	
1081	4UZACHCY67C	BUS	07	
1082	4UZACHCY67C	BUS	07	
1083	4UZACHCY67C	BUS	07	
1084	4UZACHCY67C	BUS	07	
1085	4UZACHCY67C	BUS	07	
1086	4UZACHCY67C	BUS	07	
1087	4UZACHCY67C	BUS	07	
1088	4UZACHCY67C	BUS	07	
1089	4UZACHCY67C	BUS	07	
1090	4UZACHCY67C	BUS	07	
1091	4UZACHCY67C	BUS	07	
1092	4UZACHCY67C	BUS	07	
1093	4UZACHCY67C	BUS	07	
1094	4UZACHCY67C	BUS	07	
1095	4UZACHCY67C	BUS	07	
1096	4UZACHCY77C	BUS	07	
1097	4UZACHCY77C	BUS	07	
1098	4UZACHCY77C	BUS	07	
1099	4UZACHCY77C	BUS	07	
1100	4UZACHCY77C	BUS	07	
1101	4UZACHCY77C	BUS	07	
1102	4UZACHCY77C	BUS	07	
1103	4UZACHCY77C	BUS	07	
1104	4UZACHCY77C	BUS	07	
1105	4UZACHCY77C	BUS	07	
1106	4UZACHCY77C	BUS	07	
1107	4UZACHCY87C	BUS	07	
1108	4UZACHCY87C	BUS	07	
1109	4UZACHCY87C	BUS	07	
1110	4UZACHCY87C	BUS	07	
1111	4UZACHCY87C	BUS	07	
1112	4UZACHCY87C	BUS	07	
1113	4UZACHCY87C	BUS	07	
1114	4UZACHCY87C	BUS	07	
1115	4UZACHCY87C	BUS	07	
1116	4UZACHCY87C	BUS	07	
1117	4UZACHCY87C	BUS	07	
1118	4UZACHCY87C	BUS	07	
1119	4UZACHCY87C	BUS	07	
1120	4UZACHCY87C	BUS	07	
1121	4UZACHCY87C	BUS	07	
1122	4UZACHCY87C	BUS	07	

	A	B	C	D
1123	4UZACHC	BUS	07	
1124	4UZACHC	BUS	07	
1125	4UZACHC	BUS	07	
1126	4UZACHC	BUS	07	
1127	4UZACHC	BUS	07	
1128	4UZACHC	BUS	07	
1129	4UZACHC	BUS	07	
1130	4UZACHC	BUS	07	
1131	4UZACHC	BUS	07	
1132	4UZACHC	BUS	07	
1133	4UZACHC	BUS	07	
1134	4UZACHC	BUS	07	
1135	4UZACHC	BUS	07	
1136	4UZACHC	BUS	07	
1137	4UZACHC	BUS	07	
1138	4UZACHC	BUS	07	
1139	4UZACHC	BUS	07	
1140	4UZACHC	BUS	07	
1141	4UZACHC	BUS	07	
1142	4UZACHC	BUS	07	
1143	4UZACHC	BUS	07	
1144	4UZACHC	BUS	07	
1145	4UZACHC	BUS	07	
1146	4UZACHC	BUS	07	
1147	4UZACHC	BUS	07	
1148	4UZACHC	BUS	07	
1149	4UZACHC	BUS	07	
1150	4UZACHC	BUS	07	
1151	4UZACHC	BUS	07	
1152	4UZACHC	BUS	07	
1153	4UZACHC	BUS	07	
1154	4UZACHC	BUS	07	
1155	4UZACHC	BUS	07	
1156	4UZACHC	BUS	07	
1157	4UZACHC	BUS	07	
1158	4UZACHC	BUS	07	
1159	4UZACHC	BUS	07	
1160	4UZACHC	BUS	07	
1161	4UZACHC	BUS	07	
1162	4UZACHC	BUS	07	
1163	4UZFCHC	BUS	07	
1164	4UZFCHC	BUS	07	
1165	4UZFCHC	BUS	07	
1166	4UZFCHC	BUS	07	
1167	4UZFCHC	BUS	07	
1168	4UZFCHC	BUS	07	
1169	4UZFCHC	BUS	07	
1170	4UZFCHC	BUS	07	
1171	4UZFCHC	BUS	07	
1172	4UZFCHC	BUS	07	
1173	4UZFCHC	BUS	07	

	A	B	C	D
1174	4UZFCHCY17C	BUS	07	
1175	4UZFCHCY17C	BUS	07	
1176	4UZFCHCY17C	BUS	07	
1177	4UZFCHCY27C	BUS	07	
1178	4UZFCHCY27C	BUS	07	
1179	4UZFCHCY27C	BUS	07	
1180	4UZFCHCY27C	BUS	07	
1181	4UZFCHCY27C	BUS	07	
1182	4UZFCHCY27C	BUS	07	
1183	4UZFCHCY27C	BUS	07	
1184	4UZFCHCY27C	BUS	07	
1185	4UZFCHCY36C	BUS	07	
1186	4UZFCHCY36C	BUS	07	
1187	4UZFCHCY36C	BUS	07	
1188	4UZFCHCY37C	BUS	07	
1189	4UZFCHCY37C	BUS	07	
1190	4UZFCHCY37C	BUS	07	
1191	4UZFCHCY37C	BUS	07	
1192	4UZFCHCY37C	BUS	07	
1193	4UZFCHCY37C	BUS	07	
1194	4UZFCHCY37C	BUS	07	
1195	4UZFCHCY37C	BUS	07	
1196	4UZFCHCY37C	BUS	07	
1197	4UZFCHCY46C	BUS	07	
1198	4UZFCHCY46C	BUS	07	
1199	4UZFCHCY47C	BUS	07	
1200	4UZFCHCY47C	BUS	07	
1201	4UZFCHCY47C	BUS	07	
1202	4UZFCHCY47C	BUS	07	
1203	4UZFCHCY47C	BUS	07	
1204	4UZFCHCY47C	BUS	07	
1205	4UZFCHCY47C	BUS	07	
1206	4UZFCHCY56C	BUS	07	
1207	4UZFCHCY57C	BUS	07	
1208	4UZFCHCY57C	BUS	07	
1209	4UZFCHCY57C	BUS	07	
1210	4UZFCHCY57C	BUS	07	
1211	4UZFCHCY57C	BUS	07	
1212	4UZFCHCY67C	BUS	07	
1213	4UZFCHCY77C	BUS	07	
1214	4UZFCHCY77C	BUS	07	
1215	4UZFCHCY77C	BUS	07	
1216	4UZFCHCY87C	BUS	07	
1217	4UZFCHCY97C	BUS	07	
1218	4UZFCHCY97C	BUS	07	
1219	4UZFCHCY97C	BUS	07	
1220	4UZFCHCY97C	BUS	07	
1221	4UZFCHCY97C	BUS	07	
1222	4UZFCHCY97C	BUS	07	
1223	4UZFCHCY97C	BUS	07	
1224	4UZFCHCYX7C	BUS	07	

	A	B	C	D
1225	4UZFCHCYX7C	BUS	07	
1226	4UZFCHCYX7C	BUS	07	
1227	4UZFCHCYX7C	BUS	07	
1228	4UZFCHCYX7C	BUS	07	
1229	4UZFCHCY77C	BUS	07	
1230	4UZACHCY06C	BUS	07	
1231	4UZACHCY07C	BUS	08	
1232	4UZACHCY08C	BUS	08	
1233	4UZACHCY08C	BUS	08	
1234	4UZACHCY08C	BUS	08	
1235	4UZACHCY17C	BUS	08	
1236	4UZACHCY17C	BUS	08	
1237	4UZACHCY18C	BUS	08	
1238	4UZACHCY18C	BUS	08	
1239	4UZACHCY18C	BUS	08	
1240	4UZACHCY27C	BUS	08	
1241	4UZACHCY28C	BUS	08	
1242	4UZACHCY28C	BUS	08	
1243	4UZACHCY28C	BUS	08	
1244	4UZACHCY37C	BUS	08	
1245	4UZACHCY38C	BUS	08	
1246	4UZACHCY38C	BUS	08	
1247	4UZACHCY38C	BUS	08	
1248	4UZACHCY47C	BUS	08	
1249	4UZACHCY48C	BUS	08	
1250	4UZACHCY48C	BUS	08	
1251	4UZACHCY48C	BUS	08	
1252	4UZACHCY57C	BUS	08	
1253	4UZACHCY58C	BUS	08	
1254	4UZACHCY58C	BUS	08	
1255	4UZACHCY67C	BUS	08	
1256	4UZACHCY68C	BUS	08	
1257	4UZACHCY68C	BUS	08	
1258	4UZACHCY68C	BUS	08	
1259	4UZACHCY77C	BUS	08	
1260	4UZACHCY77C	BUS	08	
1261	4UZACHCY77C	BUS	08	
1262	4UZACHCY78C	BUS	08	
1263	4UZACHCY87C	BUS	08	
1264	4UZACHCY88C	BUS	08	
1265	4UZACHCY88C	BUS	08	
1266	4UZACHCY88C	BUS	08	
1267	4UZACHCY98C	BUS	08	
1268	4UZACHCY98C	BUS	08	
1269	4UZACHCYX7C	BUS	08	
1270	4UZACHCYX8C	BUS	08	
1271	4UZACHCYX8C	BUS	08	
1272	4UZACHCYX8C	BUS	08	
1273	4UZACHCYX8C	BUS	08	
1274	4UZACHCYX8C	BUS	08	
1275	4UZFCHCY07C	BUS	08	

	A	B	C	D
1276	4UZFCHCY17C	BUS	08	
1277	4UZFCHCY17C	BUS	08	
1278	4UZFCHCY27C	BUS	08	
1279	4UZFCHCY28C	BUS	08	
1280	4UZFCHCY38C	BUS	08	
1281	4UZFCHCY47C	BUS	08	
1282	4UZFCHCY47C	BUS	08	
1283	4UZFCHCY48C	BUS	08	
1284	4UZFCHCY57C	BUS	08	
1285	4UZFCHCY58C	BUS	08	
1286	4UZFCHCY67C	BUS	08	
1287	4UZFCHCY78C	BUS	08	
1288	4UZFCHCY87C	BUS	08	
1289	4UZFCHCY87C	BUS	08	
1290	4UZFCHCY97C	BUS	08	
1291	4UZFCHCY98C	BUS	08	
1292	4UZFCHCY98C	BUS	08	
1293	4UZFCHCYX7C	BUS	08	



Corporate

ZF Group North American Operations, Inc
15811 Centennial Drive - Northville, MI 48168

**Mr. Daniel C. Smith, Associate
Administrator
National Highway Traffic Safety
Administration (NSA-01)
Room 5321, Mail Code NVS-010
400 Seventh Street, S.W.
Washington, D.C. 20590**

Dept.
From **Beth Walker**
Phone 734-207-2823
Fax 734-416-1948
E-mail elizabeth.walker@zf.com
Your Ref.
Our Ref.
Date **June 26, 2007**

Part 573 Notification to NHTSA

Dear. Mr. Smith:

On June 19th, 2007, ZF decided that a defect which relates to motor vehicle safety exists in items of motor vehicle equipment listed below, and is furnishing notification to the National Highway Traffic Safety Administration in accordance with 49 CFR Part 573 Defect and Noncompliance Reports.

573.6 (c)(1): Manufacturer's Name of the item of equipment

ZF Heavy Duty Steering Inc., 50 Harwill Road, St. Thomas ON N5P 4M6, Canada

Contact person:

Mr. David Peno,
Manager North American Aftersales
ZF Sales & Service North America, LLC
777 Hickory Hill Drive
Vernon Hills, IL 60061, USA
Tel: 847-478-6754
Cell: 859-802-5760
Email: David.Peno@ZF-Lenksysteme.com
Lenksysteme.com

Ms. Ana Lucia Chequer
Manager Quality Assurance (LSCAS)
ZF Heavy Duty Steering Inc.
50 Harwill Road
St. Thomas, ON N5P 4MG, Canada
Tel: 519-637-2614
Cell: 519-639-5570
Email: Ana.Chequer@ZF-



573.6 (c)(2)(iii): Identification of Items of Motor Vehicle Equipment

Generic Name of item	Model
Steering Gear	Servocom S2

Supplier	Customer	Part number	Date of supply
ZF Heavy Duty	GM Warren, MI	8018 974 101 8018 974 102	Apr 30, 2002 – Aug 26, 2004 Sep 07, 2004 – Apr 17, 2007
ZF Heavy Duty	ZF SSO Vernon Hills, IL	8018 955 101 8018 955 103 8018 955 104 8018 955 105	Mar 26, 2002 – Jun 23, 2004 Apr 16, 2004 – Jun 26, 2006 Aug 18, 2006 Sep 07, 2004 – Mar 24, 2006
ZF Heavy Duty	Spartan Chassis Charlotte, MI	8018 955 103 8018 955 104	Feb 02, 2005 – May 17, 2005 Jul 17, 2003 – Jul 30, 2004
ZF Heavy Duty	ZF Commercial Suspension Systems & Components, Lancaster, SC	8018 955 103	Dec 19, 2002 – Apr 02, 2007
ZF Heavy Duty	Trolley Boats Holly Hill, FL	8018 955 101 8018 955 102	Nov 08, 2002 – Sep 15, 2005 Mar 20, 2003 – May 17, 2004
ZF Heavy Duty	Navistar-Workhorse Ft. Wayne, IN	8018 955 101	Feb 28, 2002 – Sep 25, 2002

573.6 (c)(2)(v) Manufacturer that purchase the component

- General Motors Corporation
G3100 Van Slyke Rd, Flint, MI 48551
- ZF Sales & Service North America, LLC, 777 Hickory Hill Drive, Vernon Hills, IL 60061
- Spartan Chassis, Inc., 1549 Mikesell Road, Charlotte, MI 48813



- ZF Commercial Suspension Systems & Components, LLC
946 Quality Drive, Lancaster SC 29720
- TrolleyBoats, LLC, 406 Walker Street, Holly Hill, FL 32117
- Workhorse Custom Chassis, 940 S. State Route 32, Union City, IN 47390

573.6 (c)(3): Total Number of Parts Containing the Defect

Supplier	Customer	Part number	Number of parts potentially involved
ZF Heavy Duty	GM Warren, MI	8018 974 102	1
ZF Heavy Duty	GM Flint, MI	8018 974 101 8018 974 102	529 751
ZF Heavy Duty	ZF SSO Vernon Hills, IL	8018 955 101 8018 955 103 8018 955 104 8018 955 105	26 8 5 24
ZF Heavy Duty	Spartan Chassis Charlotte, MI	8018 955 103 8018 955 104	3 126
ZF Heavy Duty	ZF Commercial Suspension Systems & Components, Lancaster, SC	8018 955 103	6512
ZF Heavy Duty	Trolley Boats Holly Hill, FL	8018 955 101 8018 955 102	7 4
ZF Heavy Duty	Navistar-Workhorse Ft. Wayne, IN	8018 955 101	9

573.6 (c)(4): Percentage of parts estimated to contain the defect



A total of 8005 steering gears were sold during the reported period. ZF is aware of 4 field incidents and 2 0-mileage incidents.

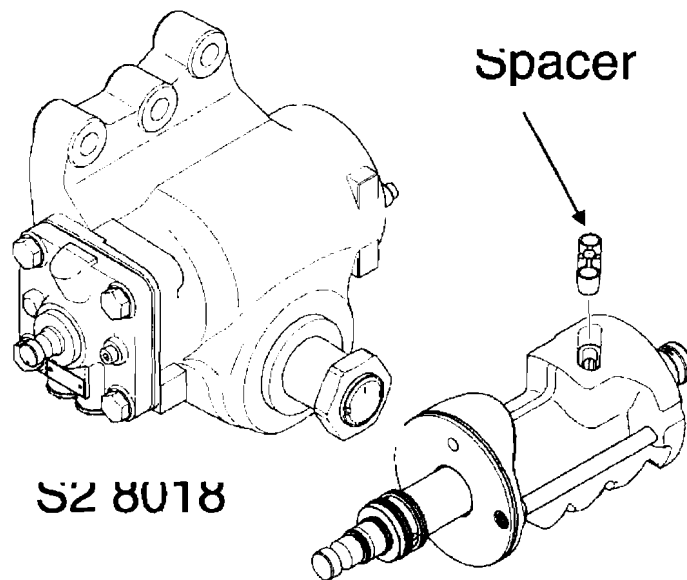
The remaining population of parts estimated to contain the defect is very low.

573.6 (c)(5): Description of the Defect

- Defect

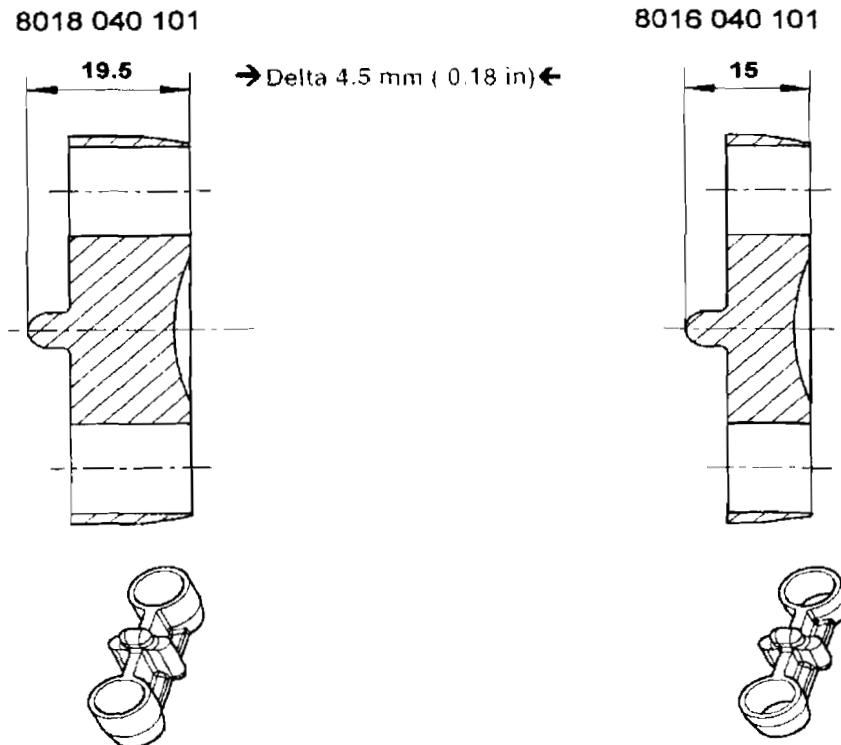
The SPACER's role is to keep the recirculation semi-tube in position. Play between the recirculation semi-tube and the ball circulation may result from the insufficient height of the 8016 type spacer (compared with the height of the correct 8018 type spacer). Consequently, the balls do not return in the circuit.

Within an undefined period, all 21 balls leave the circuit, or they are destroyed by a mechanical pressing force.



- Causes

Employee / assembly failure: Spacer from 8016 type incorrectly assembled in 8018 steering gear. The form of the 8016 and 8018 spacers is identical on two levels; the only difference is that of the height, because of the different diameters of the pistons!



- Consequences

If no balls are left in the circuit, the mechanical connection between the steering wheel and the wheels / worm and piston is no longer present.

- Any warning?

The vehicle operator will recognize this failure mode as a higher force required at the steering wheel or would recognize a requirement for more steering wheel adjustment while driving in a straight line in combination with metallic cracking noises. If the failure mode is allowed to continue, the final result will be the interruption in the connection between the steering wheel and the wheels of the vehicle.

- Supplier of the Defect component

ZF Heavy Duty Steering Inc., 50 Harwill Road, St. Thomas ON N5P 4M6, Canada
Mr. Bernhard Freiermuth

573.6 (c)(6) Chronology of all principal events



June 08th, 2005: Field failure at customer, functional complaint, no accident

July 08th, 2005: 0-mileage failure at customer, noise and functional complaint

October 20th, 2006: Field failure at customer, functional complaint, no accident

December 18th, 2006: Field failure at customer, functional complaint, no accident

January 29th, 2007: Field failure at customer, functional complaint, no accident

May 09th, 2007: 0-mileage failure at customer, functional complaint

573.6 (c)(8)(i) Remedy Program:

Correction in Production line:

- Based on current field complaints: boxes of 8018 spacers removed from the line; supervisors have to feed the sorting fixture with spacers (April 25th, 2007)
- Double visual check, Supervisor has spacer under control, has to feed sorting device and has to make a 100 % piston check (April 25th, 2007)
- Design change of 8016 pistons: use of new spacer (different length) that doesn't fit in 8018 piston (planned for July 2007)

Field:

Current statistical data based on field and test bench evaluations showed the failure mode occurs within short service life (max. 12,000 miles). Therefore the initial action will be to exchange those units with less than 15,000 miles. Future field statistics evaluation will continue to verify this mileage limit or determine if it needs to be increased.

573.6 (c)(8)(ii) Schedule

-Notification to the customers

Begin of notification: May 25th, 2007

End of notification: June 11th, 2007

-Schedule for recall is not determined, yet.



Page 7/7 · Date June 26, 2007

573.6 (c)(9) Copy of all notices bulletins and communications

See attachment (notification letters to customers)

If you or your staff has any questions, please feel free to contact me.

Sincerely,

A handwritten signature in black ink that reads "Beth Walker". The signature is written in a cursive style with a long, sweeping underline.

Beth Walker

ZF Heavy Duty Steering Inc. · N5P 4M6 St. Thomas (ON)

ZF Commercial Suspension Systems & Components, LLC
946 Quality Drive
Lancaster SC 29720
USA

Attention: Steve Fleming
Quality Manager

Ihre Zeichen
Your ref.

Ihre Nachricht vom
Your letter of

Unsere Zeichen
Our ref.

Abteilung
Dept.

Telefon-Durchwahl
Phone extension

Telefax-
Durchwahl
Telefax extension

Datum
Date

QA 230

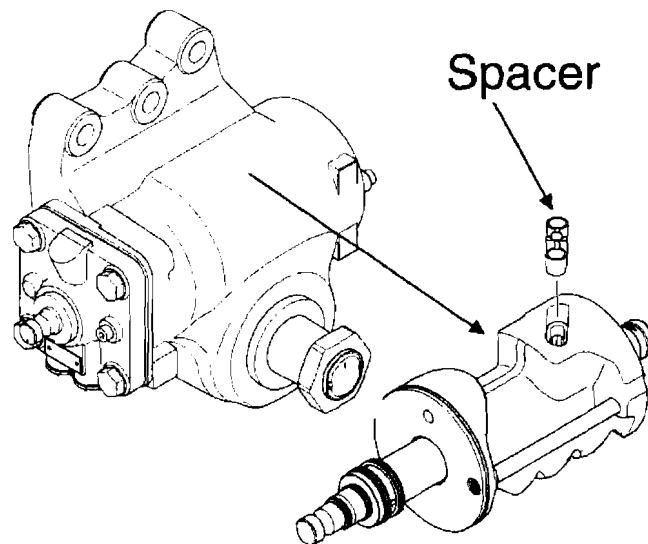
6243

June 11, 2007

Dear Mr. Fleming,

Following our telephone conversation with your department, we would now like to officially inform you about a quality issue regarding our "Servocom S2" product , type 8018, which we are supplying to you.

As part of our continuous product monitoring process we received some Servocom S2, type 8018, back from the field for analysis. The result of the examinations of the steering gears showed that a spacer with the wrong dimensions had been fitted in our assembly.



The role of the SPACER is to ensure the return function of the recirculating balls.

Address:
ZF Heavy Duty Steering Inc.
50 Harwill Road
N5P 4M6 St. Thomas (ON)

Phone: +1 (519) 637-2614
 Fax: +1 (519) 637-6243
 Internet: www.zf-lenksysteme.com

Seite/Page: 2
an/to:

If the height of the spacer which has been installed is insufficient, the play in the return function of the recirculating balls is excessive. As a consequence there is a failure in the circulatory function of these balls. The vehicle operator will recognize this failure mode as a higher force required at the steering wheel or would recognize a requirement for more steering wheel adjustment while driving in a straight line. If the failure mode is allowed to continue, the final result will be the interruption in the connection between the steering wheel and the wheels of the vehicle. In this case the vehicle can no longer be steered.

During the total production period for this steering gear type, 6 defective steering gears, all of which were in operation for less than 10,000 miles, have been returned to us by one OE customer. All originated from 4 different production days. In all cases it was still possible to steer the vehicle. According to the investigations we have carried out so far, units which were produced prior to April 25, 2007 are potentially affected.

As manufacturer we are carrying out our duty of due care and attention and fulfilling our legal obligations by providing you with the fullest possible information regarding the quality issue that we have detected. ZF Lenksysteme will be notifying NHTSA in accordance with the TREAD Act regulations of this matter.

We urgently recommend that a meeting be scheduled to define the further steps which should be taken.

ZF Lenksysteme would again like to offer our profound apologies for the inconvenience which will be caused to you and your customer by this issue.

The responsible people to contact here in North America dealing with this program are:

Mr. David Peno
Manager North American Aftersales
Tel : 847-478-6754
Cell: 859-802-5760
E-Mail: David.Peno@ZF.com

Ms. Ana Lucia Chequer
Manager Quality Assurance (LSCAS)
Tel.: +1 519-637-2614
Cell: +1 519-639-5570
E-Mail: Ana.Chequer@ZF-Lenksysteme.com

Respectfully,
ZF Lenksysteme GmbH

H. Rapp (as MoB LSCAS)

Mr Freiermuth LSCAS

ZF Heavy Duty Steering Inc. N5P 4M6 St. Thomas (ON)

General Motors Corporation
Mail Code 480-206-274
Cadillac Building
300009 Van Dyle Avenue
Warren, MI 48090
Attention: Mr. Terry White
Manager – GM APQP Supplier Quality

Ihre Zeichen
Your ref.

Ihre Nachricht vom
Your letter of

Unsere Zeichen
Our ref.

Abteilung
Dept.

Telefon-Durchwahl
Phone extension

Telefax-
Durchwahl
Telefax extension

Datum
Date

QA

230

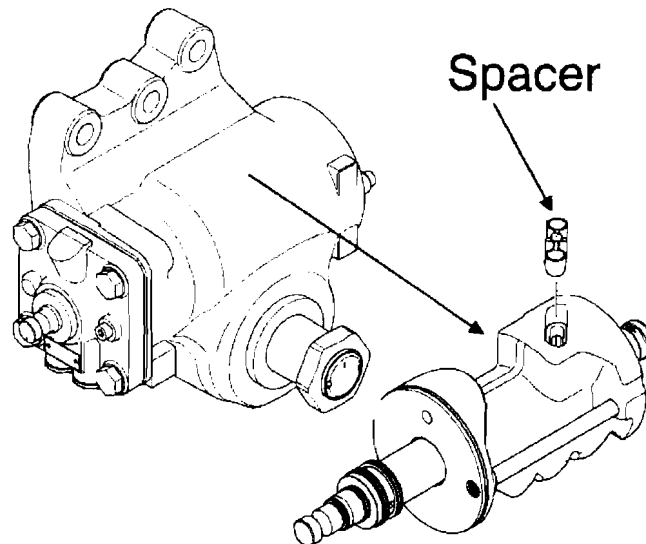
6243

June 11, 2007

Dear Mr. White,

Following our telephone conversation with your department, we would now like to officially inform you about a quality issue regarding our "Servocom S2" product , type 8018, which we are supplying to you.

As part of our continuous product monitoring process we received some Servocom S2, type 8018, back from the field for analysis. The result of the examinations of the steering gears showed that a spacer with the wrong dimensions had been fitted in our assembly.



The role of the SPACER is to ensure the return function of the recirculating balls.

Address:
ZF Heavy Duty Steering Inc.
50 Harwill Road
N5P 4M6 St. Thomas (ON)

Phone: +1 (519) 637-2614
 Fax: +1 (519) 637-6243
 Internet: www.zf-lenksysteme.com

Seite/Page: 2
an/to:

If the height of the spacer which has been installed is insufficient, the play in the return function of the recirculating balls is excessive. As a consequence there is a failure in the circulatory function of these balls. The vehicle operator will recognize this failure mode as a higher force required at the steering wheel or would recognize a requirement for more steering wheel adjustment while driving in a straight line. If the failure mode is allowed to continue, the final result will be the interruption in the connection between the steering wheel and the wheels of the vehicle. In this case the vehicle can no longer be steered.

During the total production period for this steering gear type, 6 defective steering gears, all of which were in operation for less than 10,000 miles, have been returned to us by one OE customer. All originated from 4 different production days. In all cases it was still possible to steer the vehicle. According to the investigations we have carried out so far, units which were produced prior to April 25, 2007 are potentially affected.

As manufacturer we are carrying out our duty of due care and attention and fulfilling our legal obligations by providing you with the fullest possible information regarding the quality issue that we have detected. ZF Lenksysteme will be notifying NHTSA in accordance with the TREAD Act regulations of this matter.

We urgently recommend that a meeting be scheduled to define the further steps which should be taken.

ZF Lenksysteme would again like to offer our profound apologies for the inconvenience which will be caused to you and your customer by this issue.

The responsible people to contact here in North America dealing with this program are:

Mr. David Peno
Manager North American Aftersales
Tel : 847-478-6754
Cell: 859-802-5760
E-Mail: David.Peno@ZF.com

Ms. Ana Lucia Chequer
Manager Quality Assurance (LSCAS)
Tel.: +1 519-637-2614
Cell: +1 519-639-5570
E-Mail: Ana.Chequer@ZF-Lenksysteme.com

Respectfully,
ZF Lenksysteme GmbH

H. Rapp (as MoB LSCAS)

Mr Freiermuth LSCAS

ZF Heavy Duty Steering Inc. - N5P 4M6 St. Thomas (ON)

Spartan Chassis, Inc.
 1165 Reynolds Road
 Charlotte, MI 48813
 USA

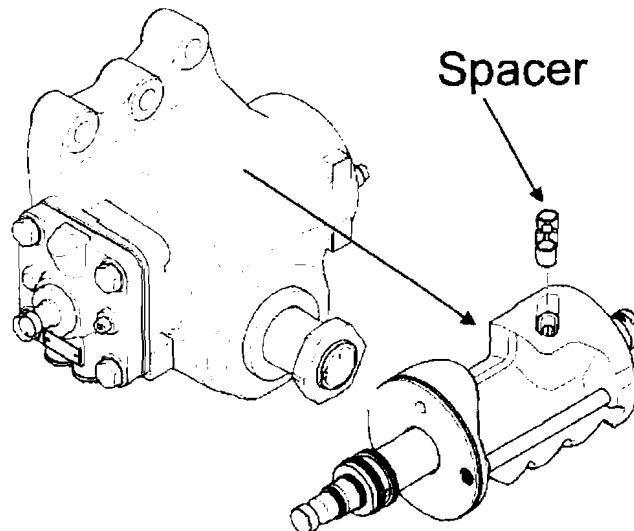
Attention: Mr. Brian Harris
 Product Assurance Engineering

Ihre Zeichen Your ref.	Ihre Nachricht vom Your letter of	Unsere Zeichen Our ref.	Abteilung Dept. QA	Telefon-Durchwahl Phone extension 230	Telefax-Durchwahl Telefax extension 6243	Datum Date June 4, 2007
---------------------------	--------------------------------------	----------------------------	--------------------------	---	--	-------------------------------

Dear Mr. Harris:

Following our telephone conversation with your department, we would now like to officially inform you about a quality issue regarding our "Servocom S2" product , type 8018, which we are supplying to you.

As part of our continuous product monitoring process we received some Servocom S2, type 8018, back from the field for analysis. The result of the examinations of the steering gears showed that a spacer with the wrong dimensions had been fitted in our assembly.



The role of the SPACER is to ensure the return function of the recirculating balls.

Address:
 ZF Heavy Duty Steering Inc.
 50 Harwill Road
 N5P 4M6 St. Thomas (ON)

Phone: +1 (519) 637-2614
 Fax: +1 (519) 637-6243
 Internet: www.zf-lenksysteme.com

Seite/Page: 2
an/to:

If the height of the spacer which has been installed is insufficient, the play in the return function of the recirculating balls is excessive. As a consequence there is a failure in the circulatory function of these balls. The vehicle operator will recognize this failure mode as a higher force required at the steering wheel or would recognize a requirement for more steering wheel adjustment while driving in a straight line. If the failure mode is allowed to continue, the final result will be the interruption in the connection between the steering wheel and the wheels of the vehicle. In this case the vehicle can no longer be steered.

During the total production period for this steering gear type, 6 defective steering gears, all of which were in operation for less than 10,000 miles, have been returned to us by one OE customer. All originated from 4 different production days. In all cases it was still possible to steer the vehicle.

According to the investigations we have carried out so far, units which were produced prior to April 25, 2007 are potentially affected.

As manufacturer we are carrying out our duty of due care and attention and fulfilling our legal obligations by providing you with the fullest possible information regarding the quality issue that we have detected. ZF Lenksysteme will be notifying NHTSA in accordance with the TREAD Act regulations of this matter.

We urgently recommend that a meeting be scheduled to define the further steps which should be taken.

ZF Lenksysteme would again like to offer our profound apologies for the inconvenience which will be caused to you and your customer by this issue.

The responsible people to contact here in North America dealing with this program are:

Mr. David Peno
Manager North American Aftersales
Tel.: (847) 478-6754
Cell: (859) 802-5760
Email: David.Peno@ZF-Lenksysteme.com

Ms. Ana Lucia Chequer
Manager Quality Assurance (LSCAS)
Tel.: (519) 637-2614
Cell: (519) 639-5570
Email: Ana.Chequer@ZF-Lenksysteme.com

Respectfully,
ZF Lenksysteme GmbH

H. Rapp (as MoB LSCAS)
Agreed but absent

Mr Freiermuth LSCAS



ZF Heavy Duty Steering Inc. - N5P 4M6 St. Thomas (ON)

TrolleyBoats, LLC
 406 Walker Street
 Holly Hill, FL 32117
 USA

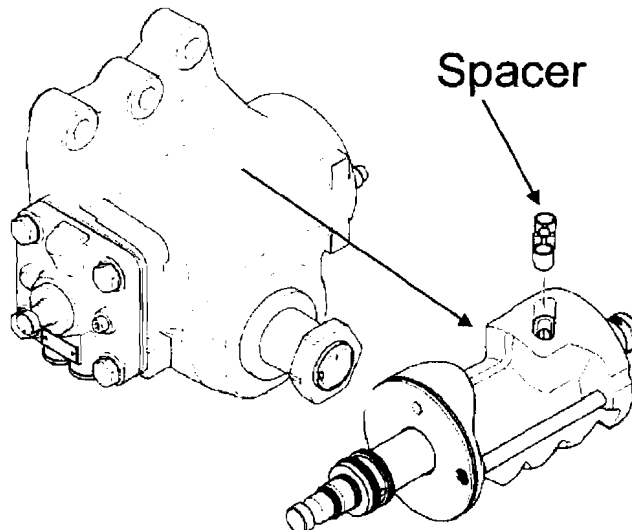
Attention: Mr. Don Redman
 President

Ihre Zeichen Your ref.	Ihre Nachricht vom Your letter of	Unsere Zeichen Our ref.	Abteilung Dept. QA	Telefon-Durchwahl Phone extension 230	Telefax-Durchwahl Telefax extension 6243	Datum Date June 4, 2007
---------------------------	--------------------------------------	----------------------------	--------------------------	---	--	-------------------------------

Dear Mr. Redman:

Following our telephone conversation with your department, we would now like to officially inform you about a quality issue regarding our "Servocom S2" product , type 8018, which we are supplying to you.

As part of our continuous product monitoring process we received some Servocom S2, type 8018, back from the field for analysis. The result of the examinations of the steering gears showed that a spacer with the wrong dimensions had been fitted in our assembly.



The role of the SPACER is to ensure the return function of the recirculating balls.

Address: ZF Heavy Duty Steering Inc. 50 Harwill Road N5P 4M6 St. Thomas (ON)	Phone: +1 (519) 637-2614 Fax: +1 (519) 637-6243 Internet: www.zf-lenksysteme.com
---	--

Seite/Page: 2
an/to:

If the height of the spacer which has been installed is insufficient, the play in the return function of the recirculating balls is excessive. As a consequence there is a failure in the circulatory function of these balls. The vehicle operator will recognize this failure mode as a higher force required at the steering wheel or would recognize a requirement for more steering wheel adjustment while driving in a straight line. If the failure mode is allowed to continue, the final result will be the interruption in the connection between the steering wheel and the wheels of the vehicle. In this case the vehicle can no longer be steered.

During the total production period for this steering gear type, 6 defective steering gears, all of which were in operation for less than 10,000 miles, have been returned to us by one OE customer. All originated from 4 different production days. In all cases it was still possible to steer the vehicle.

According to the investigations we have carried out so far, units which were produced prior to April 25, 2007 are potentially affected.

As manufacturer we are carrying out our duty of due care and attention and fulfilling our legal obligations by providing you with the fullest possible information regarding the quality issue that we have detected. ZF Lenksysteme will be notifying NHTSA in accordance with the TREAD Act regulations of this matter.

We urgently recommend that a meeting be scheduled to define the further steps which should be taken.

ZF Lenksysteme would again like to offer our profound apologies for the inconvenience which will be caused to you and your customer by this issue.

The responsible people to contact here in North America dealing with this program are:

Mr. David Peno
Manager North American Aftersales
Tel.: (847) 478-6754
Cell: (859) 802-5760
Email: David.Peno@ZF-Lenksysteme.com

Ms. Ana Lucia Chequer
Manager Quality Assurance (LSCAS)
Tel.: (519) 637-2614
Cell: (519) 639-5570
Email: Ana.Chequer@ZF-Lenksysteme.com

Respectfully,
ZF Lenksysteme GmbH

H. Rapp (as MoB LSCAS)
Agreed but absent

Mr Freiermuth LSCAS



ZF Heavy Duty Steering Inc. - N5P 4M6 St. Thomas (ON)

Navistar Corporation - Workhorse
 3033 Wayne Trace
 Ft. Wayne, IN 46806
 USA

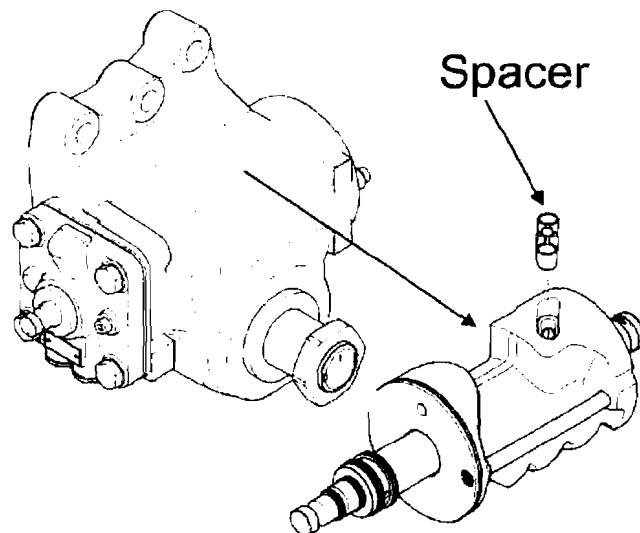
Attention: Mr. Brandon Kibe
 Compliance Engineer

Ihre Zeichen Your ref	Ihre Nachricht vom Your letter of	Unsere Zeichen Our ref.	Abteilung Dept QA	Telefon-Durchwahl Phone extension 230	Telefax-Durchwahl Teletax extension 6243	Datum Date June 4, 2007
--------------------------	--------------------------------------	----------------------------	-------------------------	---	--	-------------------------------

Dear Mr. Kibe:

Following our telephone conversation with your department, we would now like to officially inform you about a quality issue regarding our "Servocom S2" product , type 8018, which we are supplying to you.

As part of our continuous product monitoring process we received some Servocom S2, type 8018, back from the field for analysis. The result of the examinations of the steering gears showed that a spacer with the wrong dimensions had been fitted in our assembly.



The role of the SPACER is to ensure the return function of the recirculating balls.

Address:
 ZF Heavy Duty Steering Inc.
 50 Harwill Road
 N5P 4M6 St. Thomas (ON)

Phone: +1 (519) 637-2614
 Fax: +1 (519) 637-6243
 Internet: www.zf-lenksysteme.com

Seite/Page: 2
an/to:

If the height of the spacer which has been installed is insufficient, the play in the return function of the recirculating balls is excessive. As a consequence there is a failure in the circulatory function of these balls. The vehicle operator will recognize this failure mode as a higher force required at the steering wheel or would recognize a requirement for more steering wheel adjustment while driving in a straight line. If the failure mode is allowed to continue, the final result will be the interruption in the connection between the steering wheel and the wheels of the vehicle. In this case the vehicle can no longer be steered.

During the total production period for this steering gear type, 6 defective steering gears, all of which were in operation for less than 10,000 miles, have been returned to us by one OE customer. All originated from 4 different production days. In all cases it was still possible to steer the vehicle.

According to the investigations we have carried out so far, units which were produced prior to April 25, 2007 are potentially affected.

As manufacturer we are carrying out our duty of due care and attention and fulfilling our legal obligations by providing you with the fullest possible information regarding the quality issue that we have detected. ZF Lenksysteme will be notifying NHTSA in accordance with the TREAD Act regulations of this matter.

We urgently recommend that a meeting be scheduled to define the further steps which should be taken.

ZF Lenksysteme would again like to offer our profound apologies for the inconvenience which will be caused to you and your customer by this issue.

The responsible people to contact here in North America dealing with this program are:

Mr. David Peno
Manager North American Aftersales
Tel.: (847) 478-6754
Cell: (859) 802-5760
Email: David.Peno@ZF-Lenksysteme.com

Ms. Ana Lucia Chequer
Manager Quality Assurance (LSCAS)
Tel.: (519) 637-2614
Cell: (519) 639-5570
Email: Ana.Chequer@ZF-Lenksysteme.com

Respectfully,
ZF Lenksysteme GmbH

H. Rapp (as MoB LSCAS)
Agreed but absent

Mr Freiermuth LSCAS



ZF Heavy Duty Steering Inc. - N5P 4M6 St. Thomas (ON)

ZF Sales & Service North America, LLC
 777 Hickory Hill Drive
 Vernon Hills, IL 60061
 USA

Attention: Mr. Robert Carey
 Quality Manager

Ihre Zeichen
 Your ref.

Ihre Nachricht vom
 Your letter of

Unsere Zeichen
 Our ref.

Abteilung
 Dept.
 QA

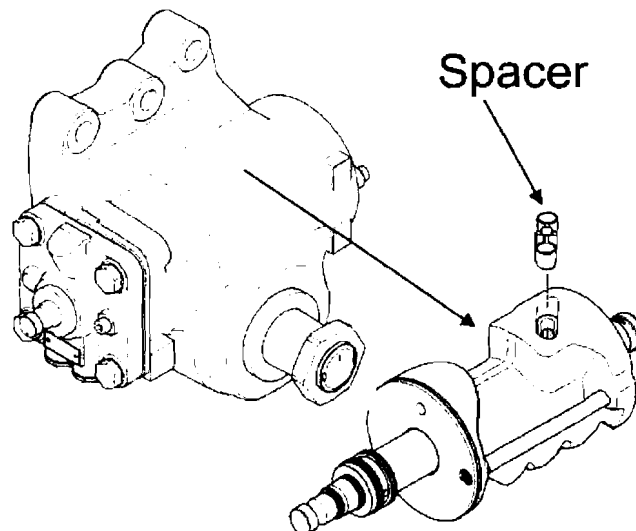
Telefon-Durchwahl
 Phone extension
 230

Telefax-Durchwahl
 Telefax extension
 6243

Datum
 Date
 June 1, 2007

Dear Mr. Carey:

Following our telephone conversation with your department, we would now like to officially inform you about a quality issue regarding our "Servocom S2" product , type 8018, which we are supplying to you.
 As part of our continuous product monitoring process we received some Servocom S2, type 8018, back from the field for analysis. The result of the examinations of the steering gears showed that a spacer with the wrong dimensions had been fitted in our assembly.



The role of the SPACER is to ensure the return function of the recirculating balls.

Address:
 ZF Heavy Duty Steering Inc.
 50 Harwill Road
 N5P 4M6 St. Thomas (ON)

Phone: +1 (519) 637 2614
 Fax: +1 (519) 637-6243
 Internet: www.zf-lenksysteme.com

Seite/Page: 2
an/to:

If the height of the spacer which has been installed is insufficient, the play in the return function of the recirculating balls is excessive. As a consequence there is a failure in the circulatory function of these balls. The vehicle operator will recognize this failure mode as a higher force required at the steering wheel or would recognize a requirement for more steering wheel adjustment while driving in a straight line. If the failure mode is allowed to continue, the final result will be the interruption in the connection between the steering wheel and the wheels of the vehicle. In this case the vehicle can no longer be steered.

During the total production period for this steering gear type, 6 defective steering gears, all of which were in operation for less than 10,000 miles, have been returned to us by one OE customer. All originated from 4 different production days. In all cases it was still possible to steer the vehicle.

According to the investigations we have carried out so far, units which were produced prior to April 25, 2007 are potentially affected.

As manufacturer we are carrying out our duty of due care and attention and fulfilling our legal obligations by providing you with the fullest possible information regarding the quality issue that we have detected. ZF Lenksysteme will be notifying NHTSA in accordance with the TREAD Act regulations of this matter.

We urgently recommend that a meeting be scheduled to define the further steps which should be taken.

ZF Lenksysteme would again like to offer our profound apologies for the inconvenience which will be caused to you and your customer by this issue.

The responsible people to contact here in North America dealing with this program are:

Mr. David Peno
Manager North American Aftersales
Tel.: (847) 478-6754
Cell: (859) 802-5760
Email: David.Peno@ZF-Lenksysteme.com

Ms. Ana Lucia Chequer
Manager Quality Assurance (LSCAS)
Tel.: (519) 637-2614
Cell: (519) 639-5570
Email: Ana.Chequer@ZF-Lenksysteme.com

Respectfully,
ZF Lenksysteme GmbH

H. Rapp (as MoB LSCAS)
Agreed but absent

Mr Freiermuth LSCAS

