



Fleetwood Folding Trailers, Inc.
258 Beacon Street / P.O. Box 111
Somerset, PA 15501-3100
p: 814.445.9661 / f: 814.443.7320
www.fleetwoodcampingtrailers.com

IMPORTANT RECALL INFORMATION FEBRUARY 2008

TO: All Fleetwood Folding Trailer Dealer Principals, Service Managers, and Parts Managers

**SUBJECT: RECALL CAMPAIGN #07V-464
2007 and 2008 Model Year Factory Installed Power Lift Folding Trailers**

Fleetwood Folding Trailers, Inc. is requesting your assistance in conducting a voluntary recall notification campaign in accordance with the National Traffic and Motor Vehicle Safety Act.

Fleetwood Folding Trailers, Inc. has decided that a defect relating to motor vehicle safety exists on specific 2007 and 2008 model year folding trailers with a factory installed powered roof lift system.

WHAT IS THE PROBLEM?

The subject folding trailers were manufactured with factory installed powered roof lifts that have the potential to generate excessive torque if operated on a 110VAC power source via the trailer's 30A power cord. If operated with 110VAC, the trailer converter will supply excessive voltage which could damage components in the lift mechanism, resulting in the potential fall of the roof which could result in personal injury, vehicle and/or property damage.

WHAT SHOULD YOU DO?

Owners of the above mentioned folding trailers have been asked to contact you for application of the recall remedy. The installation will need to be performed as outlined in the Recall Service Bulletin (PR:07-1). A copy of this bulletin is enclosed with this notice.

Should you perform this service, please complete a Fleetwood Folding Trailer warranty claim utilizing the flat rate and trouble codes listed in the Recall Service Bulletin (PR:07-1). Once repairs are completed, have the customer sign the work order and submit a warranty claim to Fleetwood Folding Trailers, Inc. for processing. You will be paid a fee in accordance with the Recall Service Bulletin PR:07-1. Customers will not be charged for these repairs.

If you have any of these vehicles in your inventory, included with this notice will be a computer list of all the trailers involved that were sold to you. You will need to order Recall Kit part number 4768-2851, as needed. Fleetwood is asking our dealers to repair stock units on their lots.

Federal Law (Section 154 of the National Highway Traffic and Motor Vehicle Safety Act of 1966) requires that:

If you have received a notice of recall or failure to comply from Fleetwood or any component manufacturer, you must repair or otherwise correct the defects on vehicles remaining in your inventory, according to the notification, before selling or leasing the vehicles. Any vehicle lessor receiving this recall notice must forward a copy of the notice to the lessee within ten days.

Please review this entire recall package with your Parts and Service Staff to familiarize them with the step by step procedure and implement the Voluntary Safety Recall Campaign.

If you have any questions, please contact our Customer Service Department at (800) 841-3605. Thank you for helping Fleetwood Folding Trailers, Inc. with its continuing efforts to maintain customer satisfaction.

Sincerely,

A handwritten signature in black ink, appearing to read "Craig Schrock", is written over a light gray rectangular background.

Craig Schrock
Technical Administrator
FLEETWOOD FOLDING TRAILERS, INC.

/jc

Enclosures: Recall Bulletin PR:07-1
Copy of Retail Notification
Computer List (if applicable)



Fleetwood Folding Trailers, Inc.
 258 Beacon Street / P.O. Box 111
 Somerset, PA 15501-3100
 p: 814.445.9661 / f: 814.443.7320
 www.fleetwoodcampingtrailers.com

PRODUCT RECALL BULLETIN #PR:07-1

RECALL
 BULLETIN:
PR:07-1

SUBJECT:

This service bulletin describes the procedure to remove/replace the power lift motor, add a new rear stop bushing, change bushing shear pins and add two (2) operational warning stickers on any 2007 and 2008 factory installed power lift trailer.

YEAR(S)
 AFFECTED:
2007 / 2008

UNITS AFFECTED:

The vehicles involved in this recall are 2007 and 2008 model year folding trailers manufactured from April 24, 2006 through November 1, 2007.

PRODUCT(S)
 AFFECTED:
Folding Trailers

IDENTIFICATION OF AFFECTED TRAILERS:

MODEL(S)
 AFFECTED:
**Santa Fe
 Cheyenne
 Sun Valley
 Williamsburg
 Utah
 Bayside
 Arcadia
 Sequoia
 Niagara
 Saratoga
 Avalon**

	<u>Beginning</u>	<u>Ending</u>
2007 Santa Fe	4CE689F1077291800	4CE689F1277201000
2007 Cheyenne	4CE696G1077292200	4CE696G1577202541
2007 Sun Valley	4CE691G1477292400	4CE691G1277298499
2007 Williamsburg	4CE650H1677293200	4CE650H1177299955
2007 Utah	4CE681H1X77292600	4CE681H1177201200
2007 Bayside	4CE678H1377292000	4CE678H1977201571
2007 Arcadia	4CG631H1X77294000	4CG631H1777200512
2007 Sequoia	4CG632H1577295500	4CG632H1477295620
2007 Niagara	4CG633H1577293400	4CG633H1777204670
2007 Saratoga	4CG635G1377290010	4CG635G1977202965
2007 Avalon	4CG649J2177263037	4CG649J2777202291
2008 Santa Fe	4CG689F1487207020	4CG689F1887207151
2008 Sun Valley	4CG691G1087207643	4CG691G1287207742
2008 Williamsburg	4CG650H1587206430	4CG650H1X87206522
2008 Utah	4CG681H1687207356	4CG681H1687207549
2008 Bayside	4CG678H1787206163	4CG678H1687206350
2008 Arcadia	4CG631H1987208015	4CG631H1487208102
2008 Niagara	4CG633H1887206607	4CG633H1087206911
2008 Saratoga	4CG635G1587209400	4CG635G1687209552
2008 Avalon	4CG649J2387209000	4CG649J2887211700

ISSUE DATE:
January 2008

RECALL KIT (Part Number 4768-2851)

The following parts are included in this kit:

<u>Qty.</u>	<u>Part Description</u>	<u>Part Number</u>
1	Motor power head	BMC P/N 16263
2	#12-10 Yellow wire connector	
1	¾" Non-tapered type U shear pin	
1	Black plastic quick disconnect w/ wire harness	BMC P/N 31680
1	White plastic quick disconnect w/ wire harness	BMC P/N 31679
2	1" Non-tapered type U shear pin	4744B130
1	2 ¼" Bushing	4773-880
2	Warning sticker	4768-191
1	Owner Operating Instructions	1968-614
1	Product Recall Bulletin PR:07-1	

“BMC” stands for Barker Manufacturing Co.

Fleetwood Folding Trailers will pay a flat rate of 1.75 hours per trailer to perform this recall. Upon completion of the work, a Fleetwood Folding Trailer warranty service claim should be submitted promptly. Service claim writers need to use **Trouble Code PR07-1** for National Highway Traffic Safety Administration tracking purposes. Under no circumstance should a customer be denied or charged for performing this recall.

To aid you in this recall, Fleetwood Folding Trailers, Inc. will supply to each dealer a computer list showing the trailers involved. You will need to order Recall Kit part number 4768-2851, as needed. Any questions should be directed to the Technical Service Department at (800) 841-3605.

Thank you in advance for your participation and dedication to ensure our customers' safety concerns are handled in a professional and courteous manner.

PROCEDURE:

1. OPEN THE ROOF LATCHES.
2. Use a battery ONLY to raise the roof or manually crank up the roof approximately 24". The roof needs to be raised high enough in order to insert wood “blocks” under each lift post. You can use pieces of 2 x 4 wood boards. Be careful not to use any material that could damage the tenting.
3. Lower the four corner stabilizers.
4. To remove the tension on the lift cables, lower the roof down 5 revolutions of the motor. The roof should be resting on top of the “blocks” at the four lift posts.
5. Remove the guide pan under the trailer to expose the whiffletree screw assembly and save the screws.
6. Remove the shear pins that attach the front and rear bushings to the screw as shown in Figure 1.
7. Replace only the REAR bushing shear pin with the new 1" non-tapered type U shear pin (4744B130) included in this kit.

8. Remove the motor power head (BMC P/N 19697) from the mounting assembly (BMC P/N 30747) by loosening the three (3) hex set screws using a 5/32" Allen wrench as shown in Figure 3.
9. Remove the wires coming from the motor power head to the current limiter by unplugging the quick disconnect. The motor wires are **black** and **red** and will have either a **white** or **black** plastic quick disconnect plug on the end as shown in Figure 3.
10. Next, detach the mounting assembly by loosening and remove the four (4) nuts and bolts that attach it to the rear cross channel and save the nuts and bolts. Slide the mounting assembly off the 4" Adapter (BMC P/N 30748). The 4" adaptor (BMC P/N 30748) is what connects the end of the whiffletree screw to the motor power head.
11. Figure 2 shows the exposed 4" adapter attached to the end of the whiffletree screw. Remove the 3/4" shear pin in the 4" adapter and replace with the new hardened 3/4" type U shear pin included in this kit.
12. Slide the whiffletree towards the bumper until the whiffletree is out of the retaining cup on the front cross channel. Angle the front of the whiffletree downward and slide the front stop bushing off of the whiffletree. Slide the new stop bushing (4773-880) onto the whiffletree. See Figure 2.
IMPORTANT: MAKE SURE THE NEW BUSHING IS ORIENTED AS SHOWN IN FIGURE 2.
13. Insert the end of the whiffletree screw back into the retaining cup and manually rotate the screw clockwise to increase the tension in the lift cables. This will prevent the screw from coming out of the retaining cup.
14. Reattach the mounting assembly (BMC P/N 30747) to the rear cross channel using the existing four (4) nuts and bolts. This assembly must be installed with the directional arrow pointing up.
15. Reattach the new motor power head (BMC P/N 16263) supplied in this kit. Slide the new motor onto the mounting assembly and make sure the motor drive shaft pin fits into the slot in the end of the 4" adapter (BMC P/N 30748). Tighten the three (3) hex set screws using a 5/32" Allen wrench.

NOTE: Make sure the motor power head is positioned as shown in Figure 3.

16. Attach the new 2 1/4" bushing (4773-880) to the screw using the remaining new 1" non-tapered type U shear pin (4744B130) included in this kit.
17. Reattach the pan cover using the existing TEK screws.

FINAL STEPS TO ATTACH WIRING TO THE NEW MOTOR:

The new motor has a **red** and **black** wire coming from the rubber sleeve around the power head. The ends of these wires are pre-stripped.

18. Attach a #12-10 yellow butt connector to the end of the **red** and **black** motor wires. See Figure 4. Wrap both #12-10 yellow butt connectors with sufficient electrical tape to seal the connector.
19. Next, determine whether a black or white disconnect plug was used on the **blue** and **orange** wires coming from the current limiter. The current limiter is the black box mounted on the inside of the rear cross member. The current limiter has a 3-prong receptacle that the hand controller plugs into for operating the system.

20. For a **black** plastic quick disconnect, use the **black** plastic male-pronged plug wire harness. For a **white** plastic quick disconnect, use the **white** plastic male-pronged plug wire harness. Both of these wire harnesses are supplied in this kit. Discard unused harness.
21. After selecting the proper wire harness and quick disconnect, strip the ends of the wires and attach them to the #12-10 yellow wire connectors on the motor wires. Figure 4 illustrates the final wire harness schematic with the proper wire color connections.
22. Route these wires through the hole in the rear cross channel for protection. Snap the quick disconnect plugs together to complete the wiring. Reinsert the black plastic convoluted tubing over these wires from the quick disconnect to the motor. The new motor power head can now receive current from a 12VDC battery power source.

TO COMPLETE THE NEW MOTOR INSTALLATION:

23. Raise the top using a 12VDC power supply. **Do not operate the powered roof lift system with the trailer 110VAC power cord plugged in.** Remove the wood block supports from the lift post areas.
24. To ensure that the system is operated on 12VDC power supply only, install the warning stickers (4768-191) included in this kit.
25. Clean an area on the rear body panel directly above the current limiter down near the bumper. Apply one (1) warning sticker. Clean an area on the roadside body panel directly above the 30A power cord outlet. Apply one (1) warning sticker next to the power cord outlet.
26. Lower the roof and reattach the top latches. Raise the four corner stabilizers.

THIS COMPLETES THE REQUIRED REWORK FOR THE PRODUCT RECALL.

MAKE SURE THE CUSTOMER RECEIVES THE REVISED COPY OF THE POWER LIFT OWNER OPERATING INSTRUCTIONS (1968-614) INCLUDED IN THIS KIT.

FIGURE 1

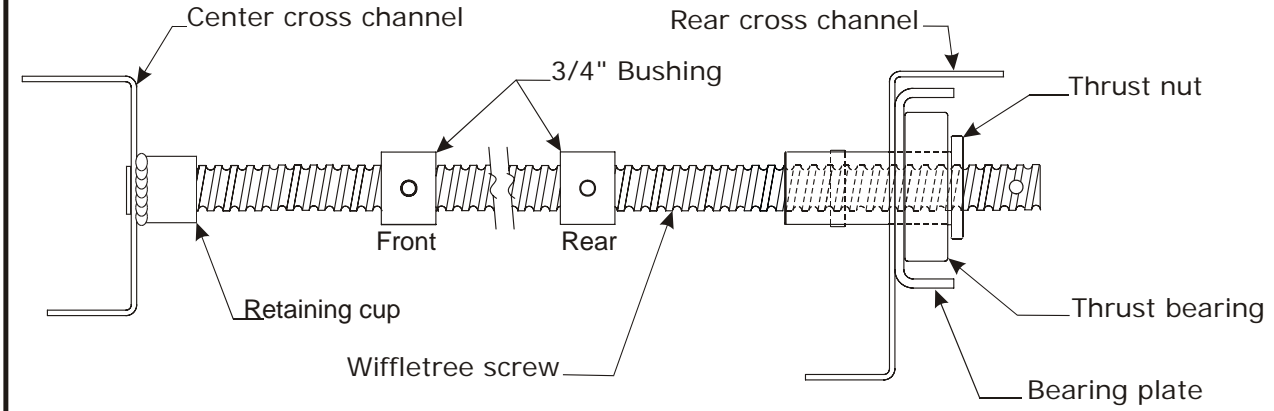


FIGURE 2

IMPORTANT:
2 1/4" Bushing Must
Be Installed As Shown.
For Proper Top Height

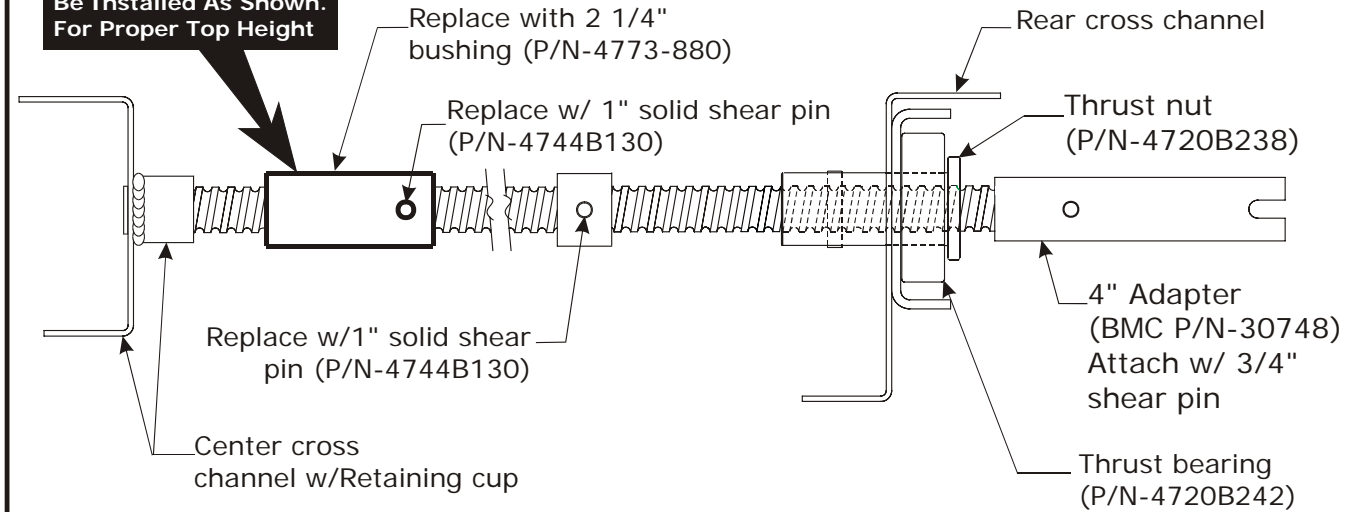


FIGURE 3

Rear top view of correct motor position

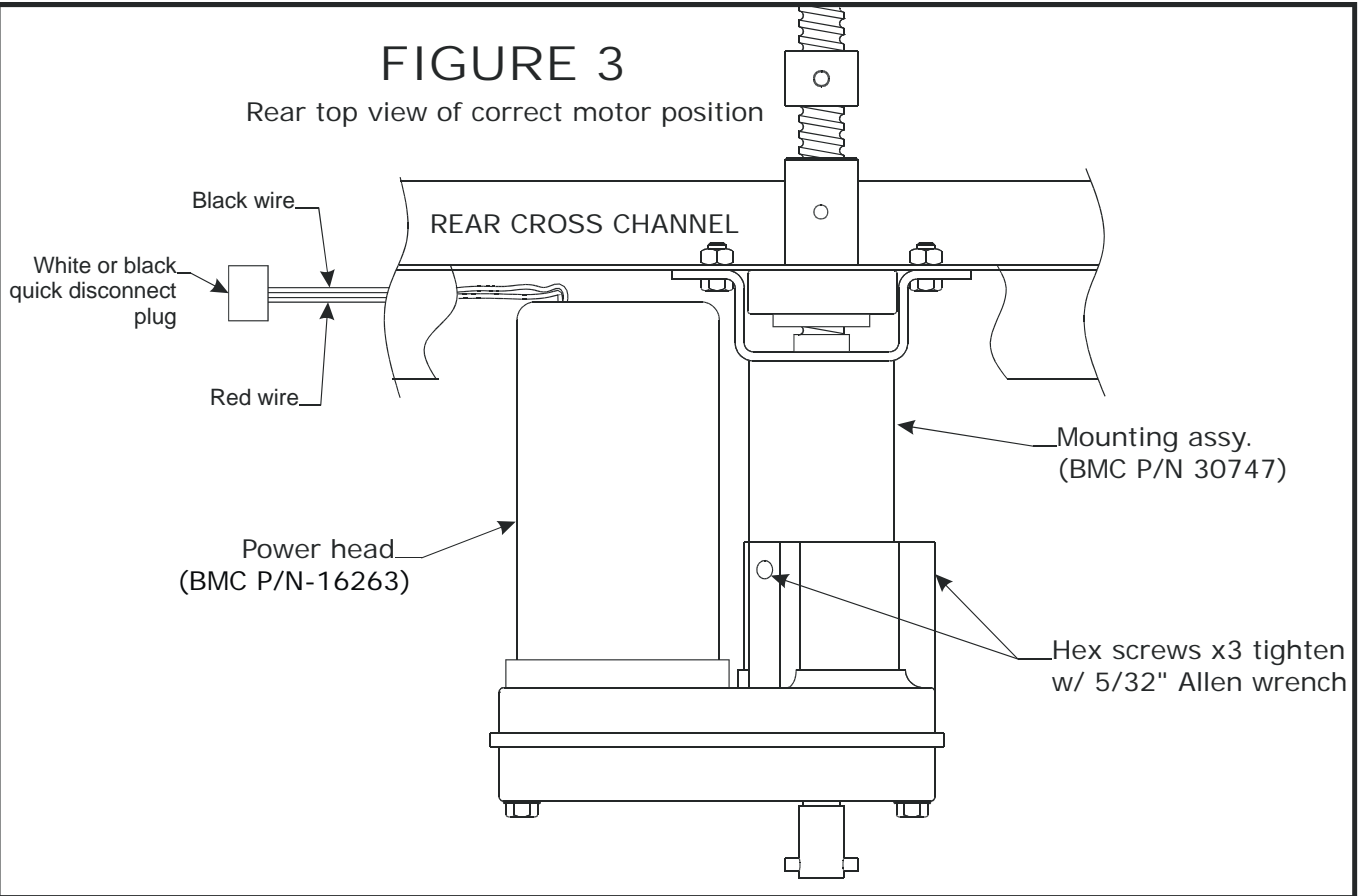
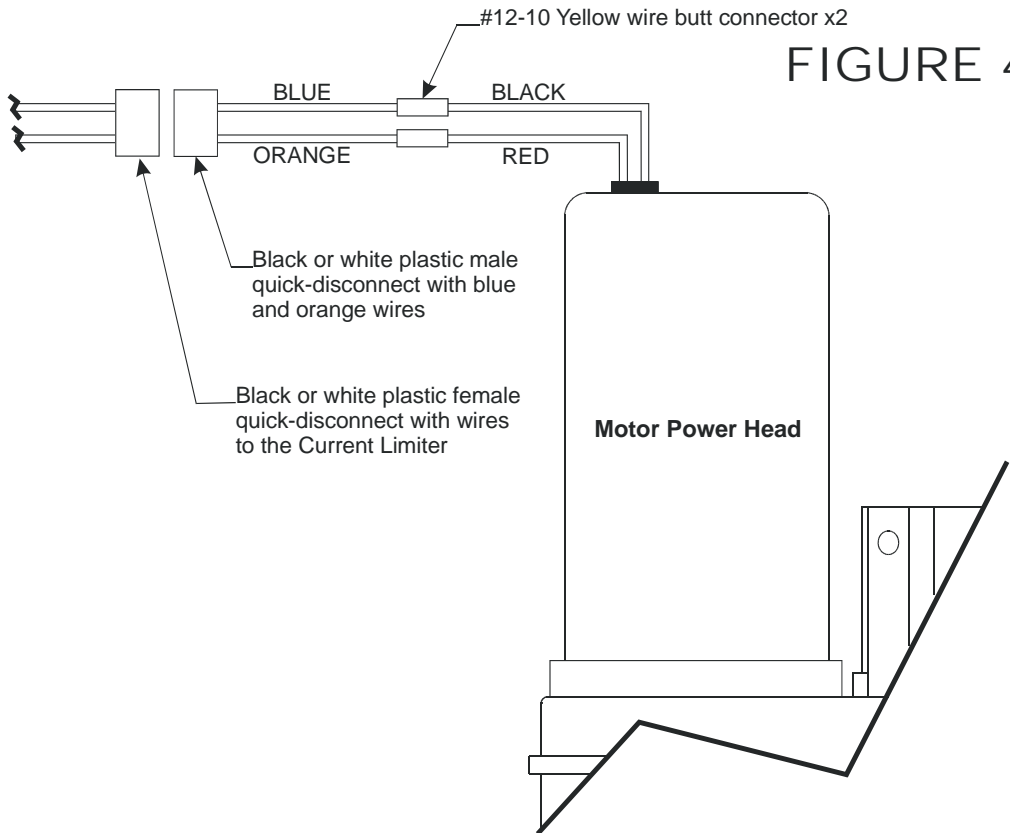


FIGURE 4





Fleetwood Folding Trailers, Inc.
258 Beacon Street / P.O. Box 111
Somerset, PA 15501-3100
p: 814.445.9661 / f: 814.443.7320
www.fleetwoodcampingtrailers.com

IMPORTANT RECALL INFORMATION (Recall #07V-464) FEBRUARY 2008

Dear Valued Fleetwood Folding Trailer Owner:

This notice is sent to you in accordance with the requirements of the National Traffic and Motor Vehicle Safety Act.

Fleetwood Folding Trailers, Inc. has decided that a defect relating to motor vehicle safety exists on specific 2007 and 2008 model year folding trailers with the factory installed powered roof lift system.

WHAT IS THE PROBLEM?

The subject folding trailers were manufactured with factory installed powered roof lifts that have the potential to generate excessive torque if operated on a 110VAC power source via the trailer's 30A power cord. If operated with 110VAC, the trailer converter will supply excessive voltage which could damage components in the lift mechanism, resulting in the potential fall of the roof which could result in personal injury, vehicle and/or property damage.

WHAT WILL FLEETWOOD DO?

The recall remedy consists of installing a new motor that will operate at a lower torque and also a new stop collar in the lift mechanism to eliminate the potential for damaging the ball bearing nut that travels along the drive screw. This installation will be performed for you at no charge. This should require minimal time and result in little inconvenience to you.

WHAT SHOULD YOU DO?

To have this kit installed on your folding trailer, please contact your selling dealer for an appointment. Estimated time of installation is one hour and forty-five minutes. The total length of time your folding trailer will be out of service will depend on the service facilities work schedule at the time of installation.

If you have had this problem corrected previously, you may be eligible for reimbursement of your cost for the repair. For more information regarding this recall, (#07V-464), contact Fleetwood Folding Trailers, Inc. at (814) 445-9661.

When you deliver your folding trailer for repairs, your Fleetwood Folding Trailer Dealer will complete a repair order. Upon completion of the installation, please sign the Repair Order.

Please fill out the enclosed *Vehicle Information Update Card* and return it to Fleetwood Folding Trailers, Inc. If you no longer own this vehicle, please take a moment to provide the name and address of the person you sold it to. This will enable us to send this important information to the new owner.

For leased vehicles: Federal regulation requires that any vehicle lessor receiving this recall notice must forward a copy of this notice to the lessee within ten days.

If you are unable to obtain the specified repair promptly and without charge, please contact:

**Fleetwood Folding Trailers, Inc.
258 Beacon Street, P.O. Box 111,
Somerset, Pennsylvania 15501
Phone: (814) 445-9661**

If you believe that the dealer and Fleetwood Folding Trailers, Inc. have failed to or have been unable to remedy the defect without charge or within a reasonable period of time, you may submit a complaint to:

**Administrator
National Highway Traffic Safety Administration
1200 New Jersey Avenue, SE
Washington, D.C. 20590**

**or call the toll-free Vehicle Safety Hotline at 888/327-4236 (TTY: 1-800-424-9153); or go to
<http://www.safercar.gov>**

Fleetwood Folding Trailers, Inc. is taking these steps in the interest of your safety. We regret any inconvenience this may cause you.

Sincerely,



Craig Schrock
Technical Administrator
FLEETWOOD FOLDING TRAILERS, INC.

/jc

Enclosures: Vehicle Information Update Card