

Dealer Operation/ General Manager	Sales- Motorcycles	Sales - Used Motorcycles	Business Manager (F&I)	Service	Parts & Accessories	Administration
Date: April 2007 Bulletin #: 16 001 07 (015)R		Source: SI 13/2007 BMW Motorrad USA Service and Technical			Revised August 2007	



BMW Motorrad

Service Information Bulletin

****Advanced Notice of Recall 07V-376****

Subject: Replacing Wiring Set for Fuel Pump Unit

Models: G650 X Series (K15)

Details: A defective wiring set has been installed in the fuel-pump unit. This can result in breakage of the contacts in the plug for the fuel pump. (Fig. 1) If this happens it causes the fuel-pump unit to fail.

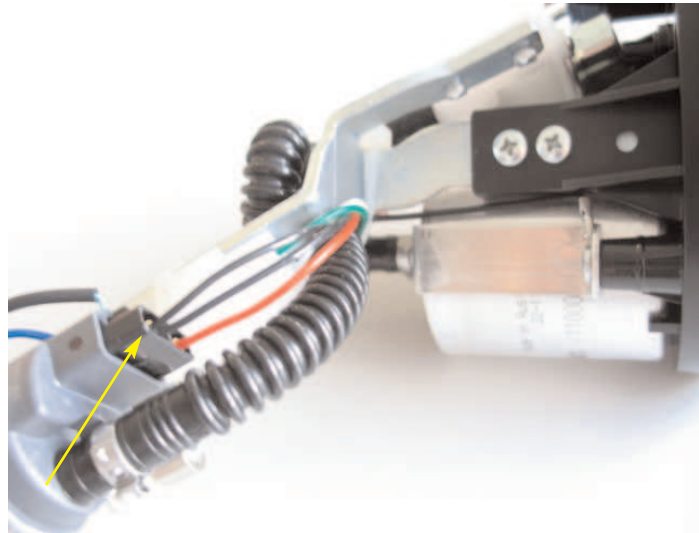


Figure 1 Old Wiring Set

**Motorcycles
Affected:**

	Type	From	To
G650 X Country	0194	XB20000	XB20172
G650 X Challenge	0195	XB40000	XB40273
G650 X Moto	0197	XB60000	XB60319

The VIN ranges listed above are only for informational purposes and are not to be considered a deciding factor. In order to determine if a specific motorcycle is affected by this recall campaign, it will be necessary to verify all motorcycle VINs through a DCS Vehicle History Check. Based on the response of the system, either proceed with the repair or take no further action.

**Production
Solution:**

As of the VINs listed below, the wiring set is correct.

G650 X Country	XB20173
G650 X Challenge	XB40274
G650 X Moto	XB60320

Aftersales Solution: The work involved in this campaign should be undertaken as part of the pre-delivery inspection. It is essential to ensure that the wiring set is replaced before customers take delivery of their motorcycles. See the instructions below for a description of how to replace the wiring set.

Warranty: Covered by the normal terms of the new vehicle 3 year/36,000 mile limited warranty.

Warranty Information:	Defect code :	00 16 10 00 00	Replacing wiring set for fuel-pump unit
	FRU code:	00 60 159	Replacing wiring set for fuel-pump unit 3 FRUs
	Part No.:	16 14 7 712 876	Wiring set assy. for fuel pump Cable tie (included)
		16 11 7 696 980	Hose clip (re-usable)

Conversion instructions for wiring set, fuel-pump unit

Details of the incorrect fuel-pump unit::





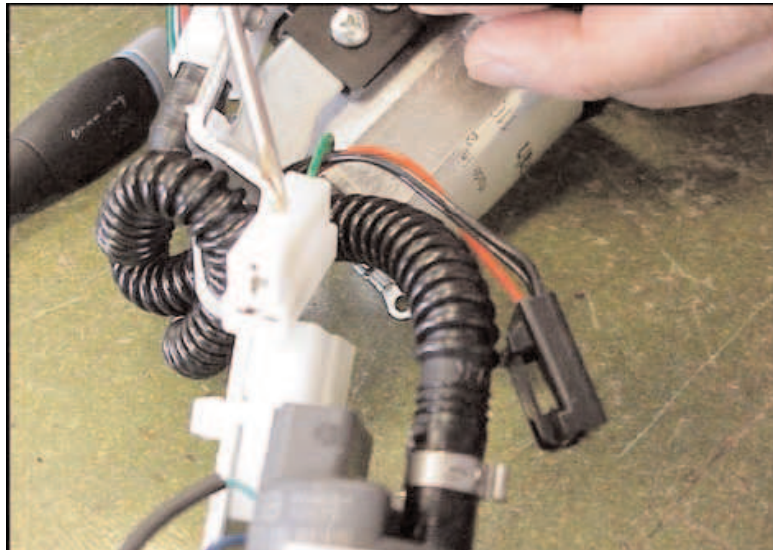
Procedure:

- 1) Disconnect the black wire from the filter clamp.



- 2) Disconnect the black and white plugs from their sockets.

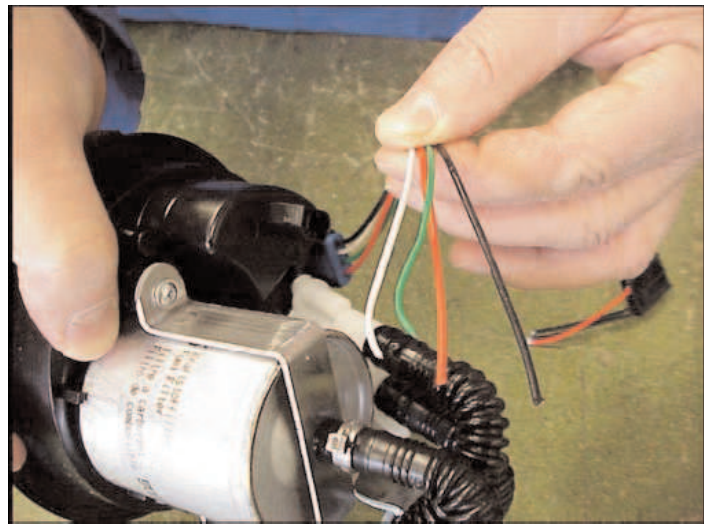
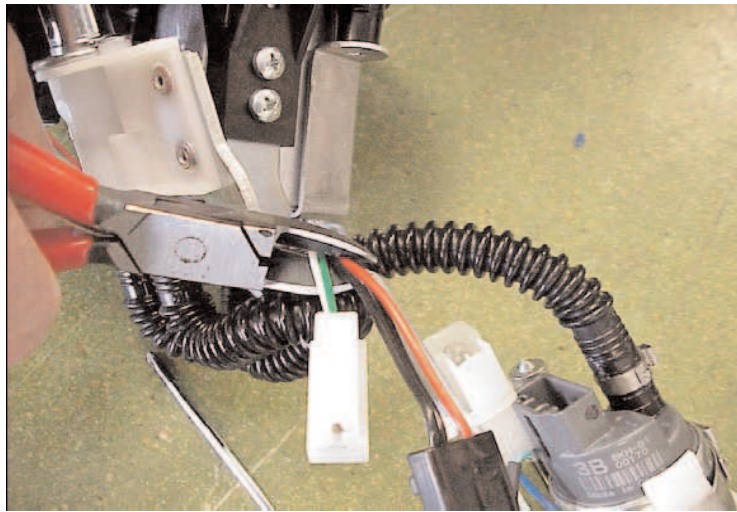




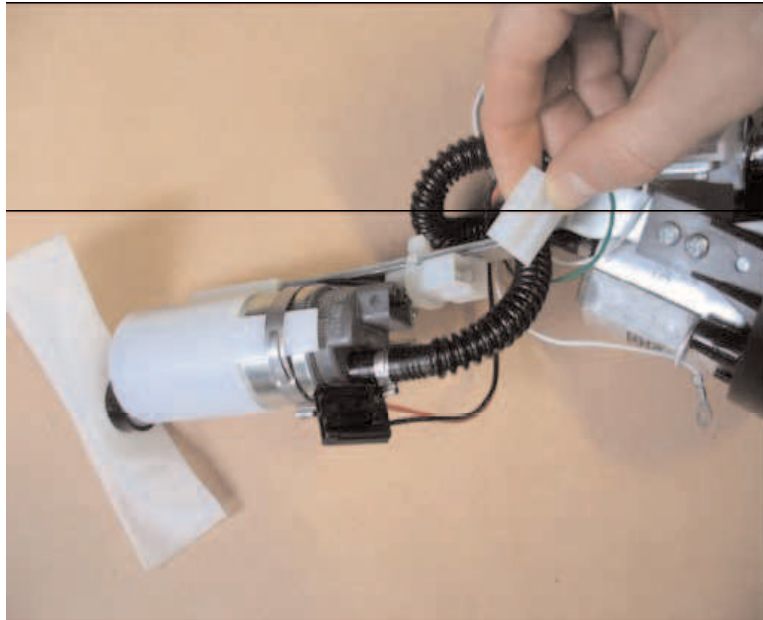
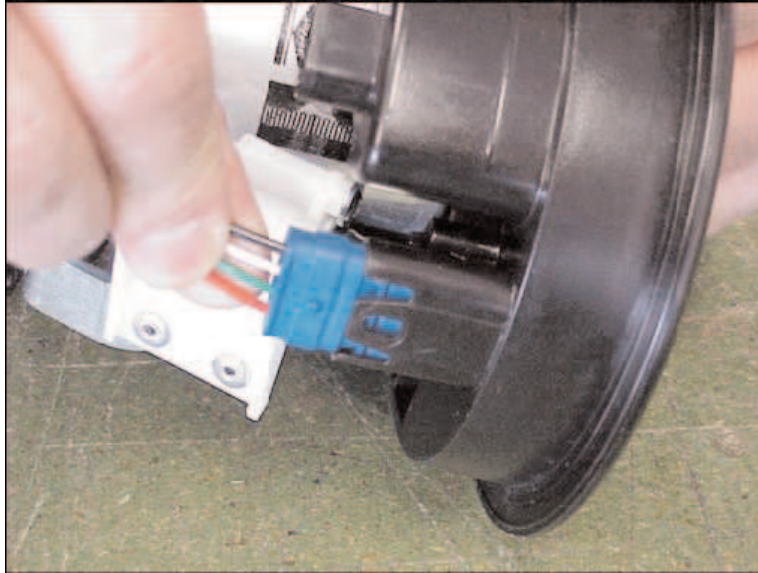
3) Disconnect the blue plug from its socket.



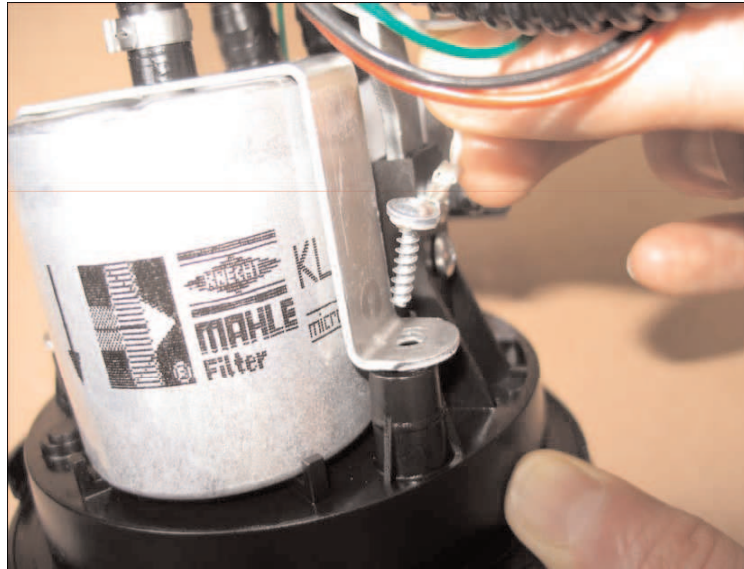
4) Cut through the wires close to the cable tie on the pump bracket.



8) Push the plugs into their sockets, making sure they fully engage.



9) Secure the first white wire connector (coming from the blue plug) in the hole in the filter clamp from which the screw was removed earlier.



10) Secure the second white wire connector (coming from the white plug) in the other hole of the filter clamp.

Important note: It is essential to perform steps 9 and 10 one after the other in the correct sequence.

Do not, **under any circumstances**, slacken both screws at the same time. Throughout the process, at least one of the two screws must remain fully tightened at all times.

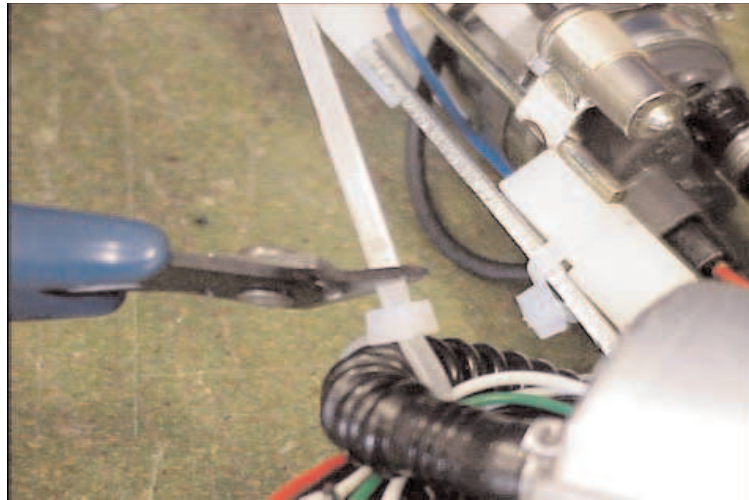




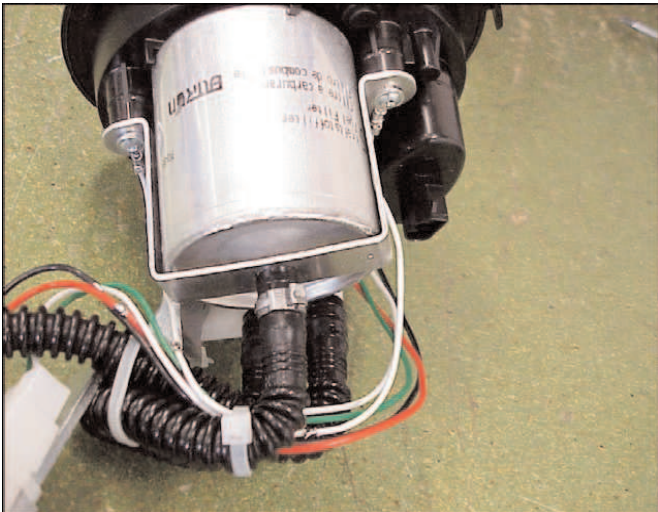
11) Use the two cable ties to secure the wires and the hoses (see below).



12) Pull the cable ties tight.



The modified fuel-pump unit.



Contact: Service and Technical Manager