

# Technical Bulletin

Division: Automotive

Section Title: Transmission/Transaxle

Category: Technical

TSB No. TS 05 07167

**SUBJECT: SAFETY RECALL CAMPAIGN "MU" REPLACEMENT OF M/T GEARSHIFT CABLE CLIP**

**MODEL(S): AERIO(RH420 AND RH423) MANUAL TRANSMISSION ONLY**

**YEAR: 2002~2006**

**AFFECTED VIN(S): ALL 2002~2005 AERIO SEDANS WITH MANUAL TRANSMISSION:  
 JS2RA41S\_25100610~JS2RA62S\_55257418  
 2006 AERIO SEDANS WITH MANUAL TRANSMISSION WITHIN THE VIN RANGE:  
 JS2RA61S\_65300011~JS2RA61S\_65301153  
 JS2RA62S\_65300002~JS2RA62S\_65305365**

**ALL 2002~2005 AERIO SX WITH MANUAL TRANSMISSION:  
 JS2RC41H\_25100073~JS2RC61H\_55304151  
 2006 AERIO SX WITH MANUAL TRANSMISSION WITHIN THE VIN RANGE:  
 JS2RC61H\_65350024~JS2RC61H\_65352059  
 JS2RC62H\_65350003~JS2RC62H\_65352705**

**NOTE: If an affected vehicle is in dealer inventory or the customer does not present the Owner Notification Letter, please check vehicle history on Suzuki Connect to verify if the VIN is affected or not.**

**CONDITION:** Gearshift lever clip may become damaged if it contacts the gearshift assembly housing, causing the gearshift cable to separate from gearshift lever.

**CAUSE:** Clip may extend out far enough to contact the housing.

**CORRECTION:** Dealers are to replace the gearshift lever clip as described below on all affected in-stock and customer vehicles regardless of vehicle age, mileage, or date of visit. Please check under the engine hood at the core support for the presence of a neon red "MU" sticker or check the vehicle warranty history to verify if the repair has been done. Follow below instructions to replace the gearshift lever clip on affected vehicle.

**WARRANTY:** Please refer to the Campaign Bulletin SC-38 for claim submission instructions and labor times.

Technical Service Department  
 Dealership Circulation - Initial and file:

Service Manager	Parts Manager	Service Advisor	Technicians				

Suzuki bulletins are intended for use by professional technicians, NOT a "do-it-yourselfer." They are written to inform these technicians of conditions that may occur on some vehicles, or to provide information that could assist in the proper service of a vehicle. Properly trained technicians have the equipment, tools, safety instructions, and know-how to do a job properly and safely. If a condition is described, DO NOT assume that the bulletin applies to your vehicle, or that your vehicle will have that condition. See your authorized Suzuki dealer for information on whether your vehicle may benefit from the information. Suzuki reserves the right to change technical specifications at any time without prior notice.

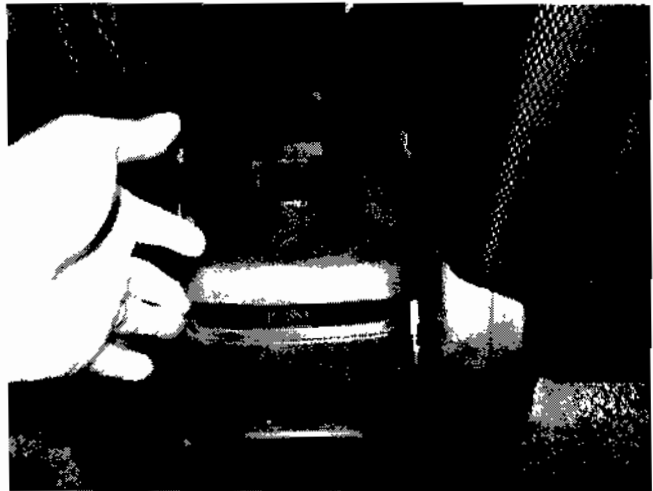
**PART(S) INFORMATION:**

Part Numbers	Description	QTY	Notes
09385-08004	Clip	1	See picture



**Gearshift lever clip replacement**

1. Apply the parking brake and set the gear shift to the neutral position.
2. Remove the parking brake lever garnish. Lift from the rear to start the release of the 8 clips. Lift the garnish straight upwards. Move the garnish forward enough to clear the parking brake lever.



**NOTE:**

The center console parts may differ from the image due to interior changes applied to each model year. Disassembly and assembly will be the same process.

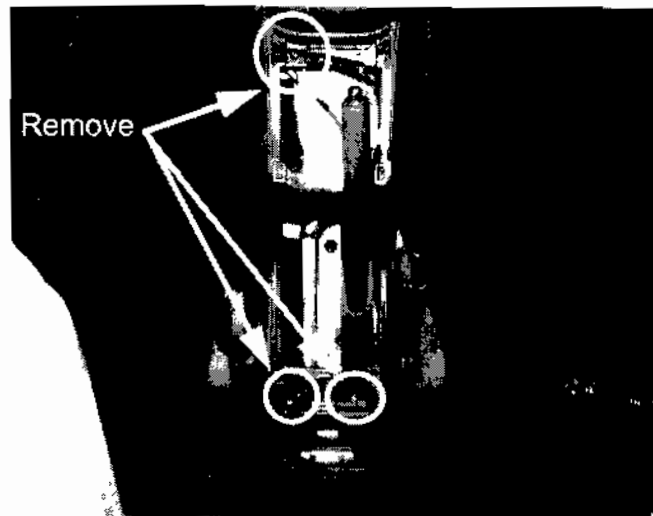
3. Disconnect the power port connector and move the garnish aside.



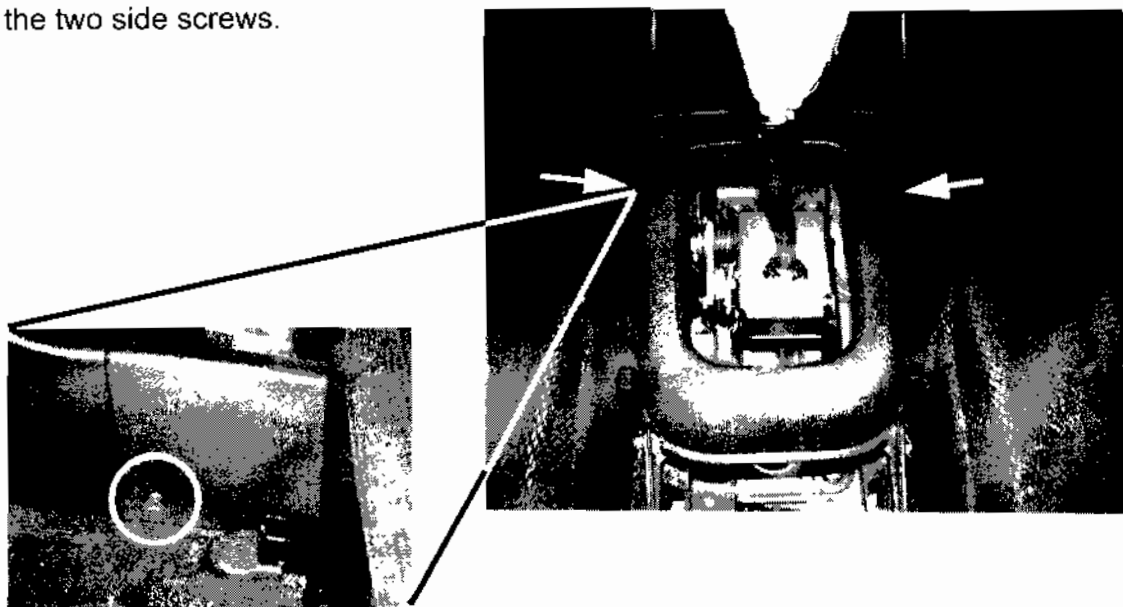
4. Remove the gearshift lever garnish by lifting from the inside of the garnish ring. Raise the garnish ring up but do not remove the boot from the shifter.



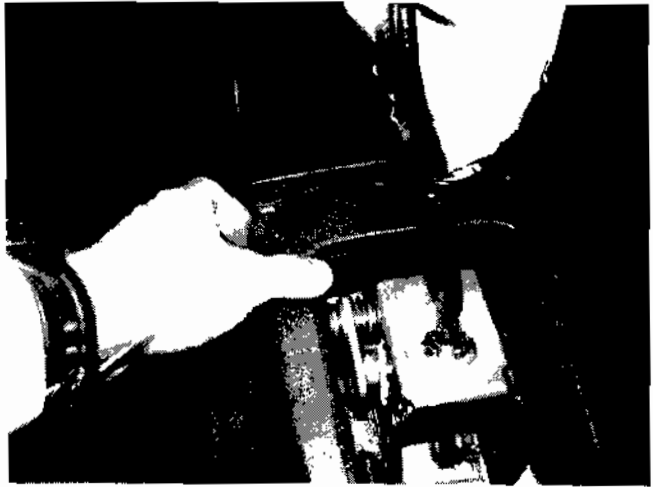
5. Remove the three indicated screws.



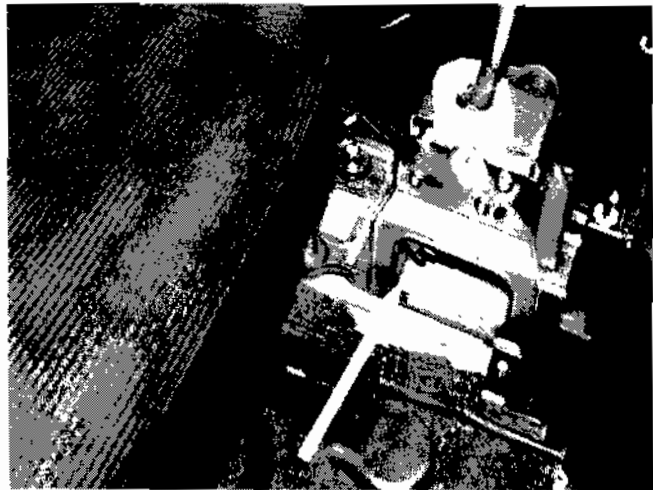
6. Remove the two side screws.



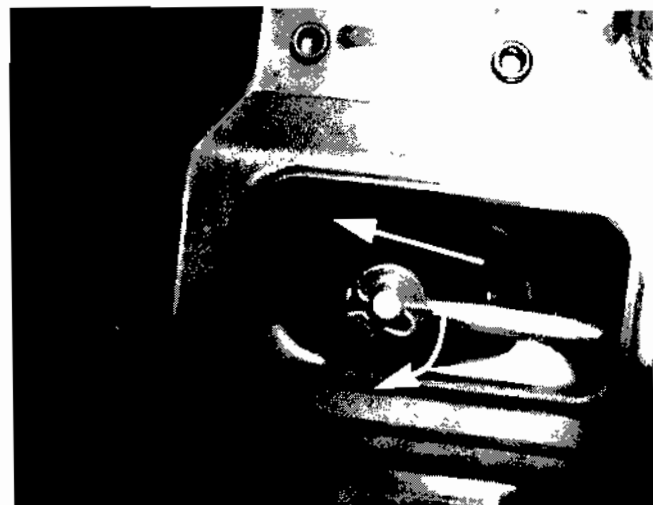
- Remove the center console by lifting the front section first to release the two clips. Then lift the console and set it aside.



- Locate the gearshift clip from the right front passenger side of the shifter housing.



- Bend the hooked end of the clip down to remove the old clip from the shifter link.
- Install the new clip in the same position.
- Re-assemble the console by reversing these instructions.



12. Place campaign sticker "MU" on core support.
13. Discard old clip.

