



THIS DOCUMENT AND THE CONTENTS DISCUSSED HEREIN ARE THE CONFIDENTIAL AND PROPRIETARY INFORMATION OF NEW FLYER INDUSTRIES CANADA ULC AND NEW FLYER OF AMERICA INC. AND ARE DISCLOSED BY NEW FLYER IN CONFIDENCE. THIS DOCUMENT AND THE CONTENTS HEREIN ARE NOT TO BE DISCLOSED BY THE INTENDED RECIPIENT WITHOUT THE PRIOR WRITTEN AUTHORIZATION OF NEW FLYER. ANY UNAUTHORIZED DISCLOSURE, REPRODUCTION OR OTHER DISTRIBUTION OF THIS DOCUMENT OR INFORMATION IS STRICTLY PROHIBITED AND MAY RESULT IN ACTION BEING TAKEN AGAINST THE PARTY MAKING THE UNAUTHORIZED DISCLOSURE. THIS DOCUMENT AND ALL COPIES HEREOF MUST BE RETURNED TO NEW FLYER UPON REQUEST.

INSTRUCTION TO SERVICE ITS: 3306

SECTION: 209 Steering	MODEL: <input type="checkbox"/> 30FT <input checked="" type="checkbox"/> 35FT <input type="checkbox"/> 40FT <input checked="" type="checkbox"/> 60FT	TYPE: <input checked="" type="checkbox"/> HIGH FLOOR	WRITTEN BY: Grant Li
	<input checked="" type="checkbox"/> DSL <input checked="" type="checkbox"/> CNG <input checked="" type="checkbox"/> LNG <input checked="" type="checkbox"/> ELEC	<input checked="" type="checkbox"/> LOW FLOOR	DRAFT

OBJECTIVE/SUBJECT:
Inspect and replace U-Joint Assembly.

PROCEDURE:
1. Turn the main battery disconnect switch to the "OFF" position.

PART A: Inspect coach for correct U-Joint Assembly.

2. Locate U-Joint Assembly as shown in Figure 1.

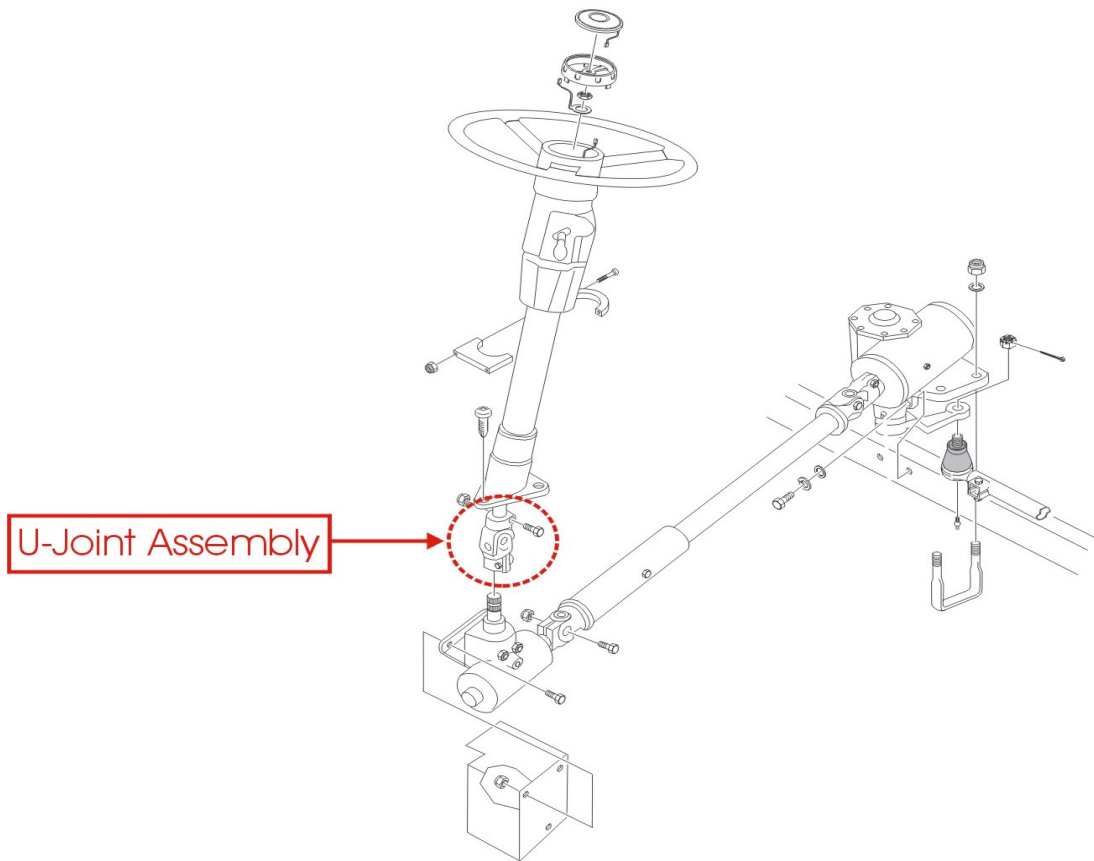


Figure 1:

3. Inspect U-Joint Assembly. If either or both of the following are present, U-Joint Assembly must be replaced, otherwise skip to step 10:
 - a. “Spicer” logo stamped on the U-Joint. See Figure 2.
 - b. One splined shaft protruding $\frac{1}{4}$ ” or more beyond yoke housing at end where offset bolt is located. See Figure 3.

DRAFT



"Spicer" logo stamped here

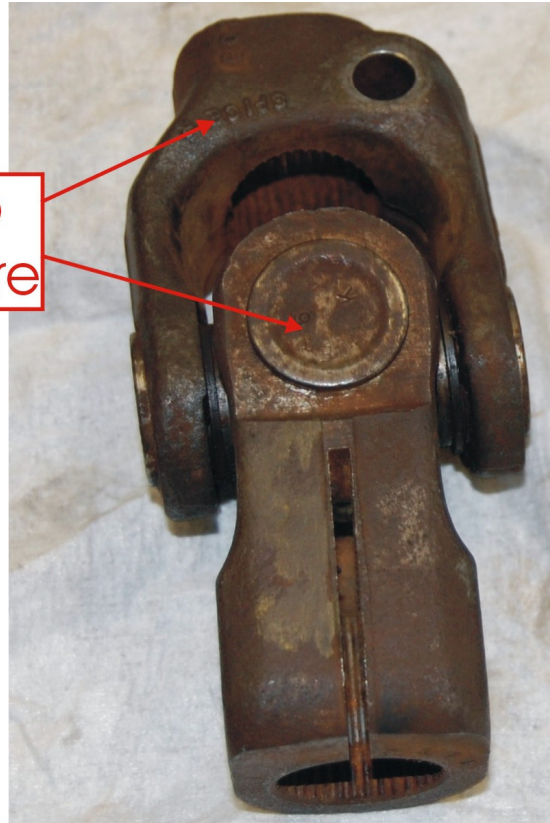


Figure 2:

Shaft protruding into yoke housing

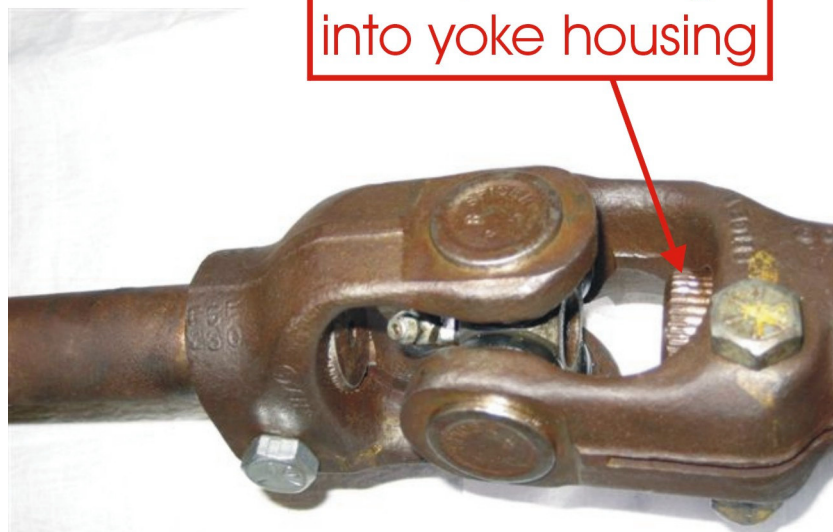


Figure 3:

DRAFT



4. Install new U-Joint Assembly (PN 8112157) as required. Torque bolts between 30 to 35 ft-lbs.
5. Check for worn splines on the steering column and transfer gearbox by grasping the U-Joint Assembly by hand and twisting it back and forth.
6. If splined connection is too loose between steering column or transfer gearbox, replace components as required.

PART B: Perform 6000 mile steering check. (To be determined if Part B is required)

7. After coach has been in service for 6000 miles, bring coach into garage for inspection.
8. Inspect U-Joint Assembly splined connections for looseness by grasping it by hand and twisting it back and forth.
9. If splined connection is too loose between steering column or transfer gearbox, replace components as required.
10. Turn the main battery disconnect switch to the "ON" position.

DRAFT



LABOUR ESTIMATE				
	Operation	Men	Hours	Labour Time M X HR
1	Inspect and replace U-Joint Assembly.	1	0.5	0.5

DRAFT

PARTS REQUIRED					
Item	Part Number	Description	Qty. per Coach	Units	Notes
1	8112157	UNIVERSAL JOINT ASSY	1	EA	