

RE: RECALL CAMPAIGN – AZURE & BENTLEY ARNAGE R, T, RL & LIMOUSINE – WHEEL BOLTS WITH DIMENSIONAL ERRORS – RE07/02

This letter is to initiate a recall campaign to replace the wheel bolts on certain Bentley Azure, Arnage R, T, RL & Limousine cars manufactured between February 2005 and August 2006. The wheel bolts that are the subject of this campaign have also been supplied as replacement parts during the period March 2005 to August 2006.

This letter will provide you with all of the information as to why this recall is being initiated, the actions you are required to take and the appropriate administrative details.

On the cars affected there is the potential for a wheel bolt to loosen in service. This defect could result in the affected wheel becoming detached from the hub, however this condition has not been witnessed by or reported to Bentley Motors Limited, neither is Bentley otherwise aware of any accidents or injuries related to this matter.

The range of affected vehicles has been determined to be all vehicles built with wheel bolts produced in a specified date range. The wheel bolt production process has subsequently been modified to eliminate the identified dimensional error.

This recall campaign requires you to take the following actions;

- On receipt of this letter immediately quarantine and render unusable before disposal:
 1. any wheel bolt, part number PDI09736PB in stock
 2. any wheel bolt, part number PDI05947PC in stock that was supplied to you after 23 September 2005
- Please verify the attached VIN list of cars which we believe are your responsibility based upon our stock and service records and please inform Stephen Worrall or your ASM of any changes.
- Please verify the attached list of invoices for wheel bolts supplied from Bentley Parts and Accessories and notify Stephen Worrall or your ASM of the appropriate VIN, customer name and address to which they were fitted by referencing your workshop repair orders. This will enable us to write to the owner informing them of the recall. This must include any PDI05947PC bolts which you had in stock at the time the first suspect batch was received from us.

Attached is a Bentley Bulletin (07-01-46-01), which details the procedure which must be followed exactly.

It is not necessary to contact us for an authorisation number. We will take our records from your Warranty Claim, which must be generated and submitted immediately upon completion of the work. You are reminded that claims for recalls cannot contain any other warranty repairs. The warranty codes and repair times are quoted within the Bulletin.

Any parts required, which are listed in the Technical Bulletin, will need to be ordered by you according to your vehicle parc. We have parts available from stock and will reimburse you according to usual Recall Warranty Claim procedures.

It is to our mutual advantage that this recall campaign goes as smoothly as possible. Should you have any questions or queries concerning this recall, please contact your Regional Aftersales Manager or myself.

Yours sincerely

07-01-46-01

Wheel bolts with dimensional errors – RE07/02

Applicability: See attached VIN list

Market Region: All

Introduction:

A dimensional error has been identified in the road wheel retaining bolt. The error may lead to relaxation of the wheel bolt torque, if left undetected this reduction in torque at the bolt will compromise the security of the road wheel to the hub.

Description:

To correct this error the vehicles listed in the above applicability section require the suspect bolts to be removed and destroyed. A dimensionally correct set of bolts has then to be used to secure the road wheels to the hub. The removed wheel bolts have to be rendered unusable and disposed of locally.

It is a requirement of this bulletin that all best practice wheel attachment strategies are observed to optimise the attachment of the road wheel to the hub. The following procedure details the only acceptable method of fitting the new wheel bolts.

Procedure:

Note: For aesthetic purposes the head of the new wheel bolt has a polished finish, this enables the bolt to be used on wheels that had a cosmetic chromium plated bolt cap as well as wheels whose bolts are covered by a centre wheel trim.

1. Remove any wheel trim covering the wheel bolts (Refer to ASSIST PIN 4603)
2. Slacken off the five wheel bolts
3. Raise the wheel off the ground (a 'wheel free' ramp is recommended for this procedure)
4. Using chalk mark the correlation of the wheel to the hub this will help avoid transformation errors and imbalance on fitting
5. Remove all five wheel retaining bolts

07-01-46-01

Wheel bolts with dimensional errors – RE07/02

6. Remove the road wheel from the hub
7. Render the removed wheel bolts unusable before discarding the bolts. Partially destroying the bolt threads using a grinding wheel would be sufficient (See figure 1)
8. Observing workshop best practice refit the road wheel
 - Degrease the hub spigot and wheel flange with a proprietary solvent
 - Referencing figure 2 apply a small amount of copper grease (no more than 0.25cc)
 - The copper grease should be applied to the road wheel location diameter and not the hub. This method of application will prevent the copper grease from spreading onto the clamping face between the wheel and the hub which is critical to the security of the joint
9. Position the wheel on the hub aligning the correlation mark from operation 4
10. Secure the wheel to the hub using five new wheel bolts (part number WHT 002283)

Note: To correctly centre the wheel between the bolts and the hub it is important to apply as much of the final torque figure to the bolts with the wheel off the ground. Practically this is approximately 100Nm on an unbraked wheel

11. With the wheel still off the ground tighten the bolts in the conventional diagonal sequence to a first stage torque of 100Nm
12. Carry out operations 1 to 11 on the other three road wheels
13. Lower the vehicle so the road wheels are touching the ground sufficiently to enable the full torque (135Nm) to be applied to the bolts
14. Torque tighten the bolts in the conventional diagonal sequence to the final torque of 135Nm
15. Refit any wheel trims (Refer to ASSIST PIN 4603)
16. Apply completion label (part number WT10191) to the inside of the spare wheel access panel adjacent to the spare wheel label (See figure 3)

Wheel bolts with dimensional errors – RE07/02



Figure 1

Wheel bolts with dimensional errors – RE07/02

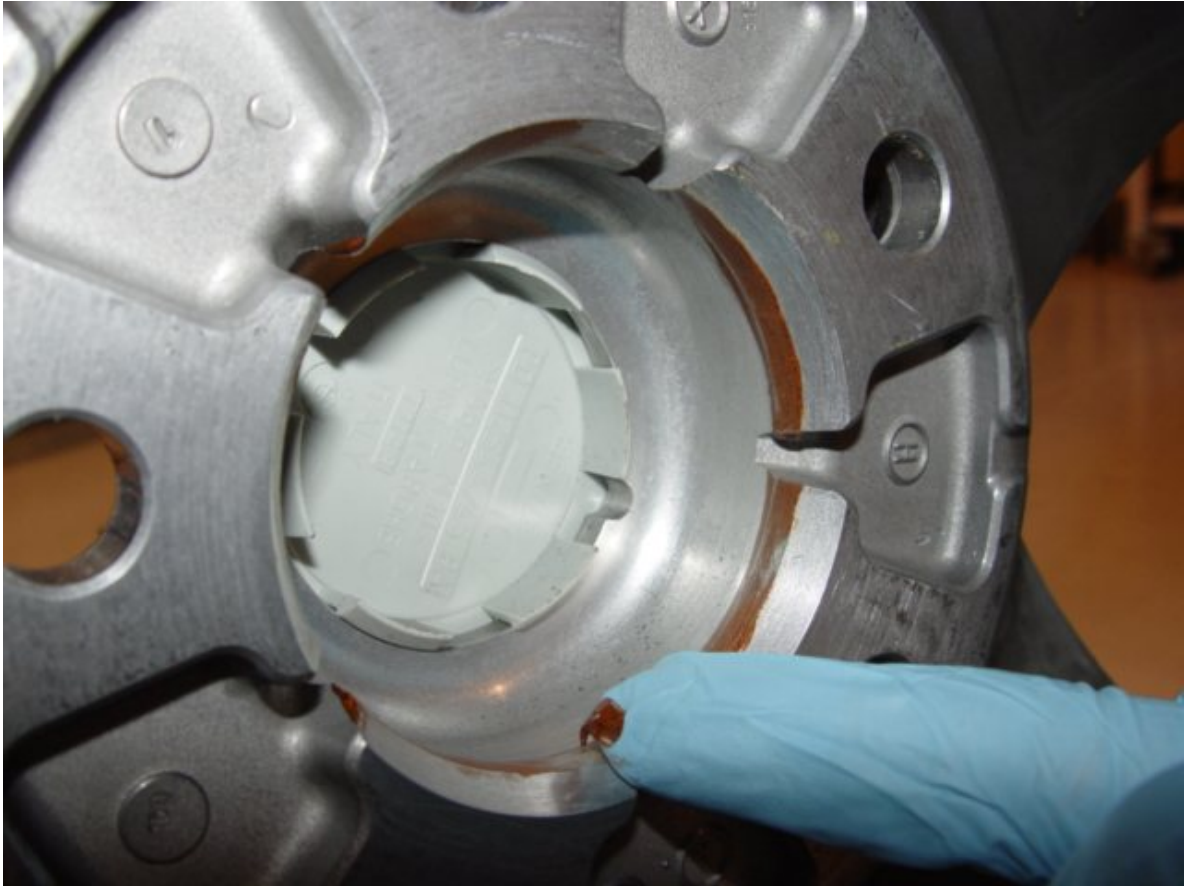


Figure 2

Wheel bolts with dimensional errors – RE07/02



Figure 3



07-01-46-01

Wheel bolts with dimensional errors – RE07/02

Torque Specification:

Component	Nm	Kgf m	lbf ft
Wheel bolt	130 -135	13.26 – 13.77	96 -100

Warranty:

Defect Code	Repair Code	Time
46-01-22-99-39	46-01-22-99-S	1.2 hours

Parts Information:

New Part Number	Description	Displaced Part Numbers	Quantity
WHT 002283	Wheel bolt	PD105947PC PD109736PB	20
WT10191	Completion label	N/A	1

Policy Type: Recall

VINS affected:

SCBLX90A86CX00011	SCBLC43F55CX10841	SCBLC37F05CX10864
SCBLF34FX5CX10107	SCBLF34F75CX10842	SCBLC37F45CX10866
SCBLC37FX5CX10824	SCBLC37F35CH10845	SCBLC37FX5CX10869
SCBLC37F35CX10826	SCBLC37F05CX10847	SCBLC37F85CX10871
SCBLC37F75CX10831	SCBLC37F25CX10851	SCBLC37FX5CX10872
SCBLC37F95CX10832	SCBLC37F65CX10853	SCBLC37F35CX10874
SCBLC37F65CX10836	SCBLC37F65CH10855	SCBLC42F95CH10877
SCBLC37F85CX10837	SCBLC37F35CX10857	SCBLC37F05CX10878
SCBLC37FX5CX10838	SCBLC37F15CH10861	SCBLC37F05CX10881
SCBLC37F85CX10840	SCBLC37F35CH10862	SCBLC43F85CX10882



Wheel bolts with dimensional errors – RE07/02

SCBLC37F45CX10883	SCBLC37F85CX10952	SCBLC42F86CX11159
SCBLC37F45CH10885	SCBLC37F15CX10954	SCBLC43F66CX11160
SCBLC37F15CX10887	SCBLC37F15CH10956	SCBLF41F56CX11161
SCBLC37F55CX10889	SCBLF34F25CX10957	SCBLC37F66CX11163
SCBLC37F35CX10891	SCBLC37F95CX10958	SCBLF34F16CH11165
SCBLC37F15CH10892	SCBLC37F35CH10960	SCBLC37F76CX11172
SCBLC43F85CX10896	SCBLC37F45CX10964	SCBLC37F96CX11173
SCBLC43F65CX10900	SCBLC37F65CX10965	SCBLC43F66CX11174
SCBLC37F25CX10901	SCBLC37FX5CX10967	SCBLC43F16CX11177
SCBLC37F25CH10903	SCBLF34F75CX10971	SCBLC37F66CX11180
SCBLC37F85CX10904	SCBLC37FX5CH10972	SCBLC37FX6CX11182
SCBLC37F15CX10906	SCBLC37F55CH10975	SCBLF34F36CH11183
SCBLC37F35CX10907	SCBLC37F66CX11101	SCBLC43F06CX11185
SCBLC43F05CX10908	SCBLC37F16CX11104	SCBLC37F96CX11187
SCBLC37F05CX10914	SCBLC37F16CH11106	SCBLC37F76CH11188
SCBLC37F45CX10916	SCBLC37F76CX11107	SCBLF34F86CX11189
SCBLC37F85CX10918	SCBLC37F76CH11109	SCBLC37F96CX11190
SCBLC37F25CH10920	SCBLC37F96CX11111	SCBDC43H06CX11192
SCBLC37FX5CX10922	SCBLC43F86CX11113	SCBLF34F66CH11193
SCBLC43F95CX10924	SCBLC43F16CX11115	SCBLC37F66CH11196
SCBLC43F25CX10926	SCBLC37FX6CX11117	SCBLC37F36CX11198
SCBLC37F75CH10928	SCBLC37F36CX11119	SCBLF34F06CX11199
SCBLC37F25CX10929	SCBLC37F16CX11121	SCBDC43H66CX11200
SCBLC37F55CH10930	SCBLC37F56CH11125	SCBLC37FX6CX11201
SCBLC37F05CX10931	SCBLC43F86CX11127	SCBLF34F76CX11202
SCBLC37F95CH10932	SCBLC37F26CH11129	SCBLC37F36CX11203
SCBLC37F45CX10933	SCBLC37F46CX11131	SCBLF34F06CX11204
SCBLC37F15CX10937	SCBLC37F46CH11133	SCBLF34F26CX11205
SCBLC37F35CX10938	SCBLC37F36CX11136	SCBLF34F46CX11206
SCBLC37F55CX10939	SCBLC37F76CX11138	SCBLC37F06CX11207
SCBLC37F85CH10940	SCBLC37F56CX11140	SCBLF34F46CH11208
SCBLC37F35CX10941	SCBLC37F26CX11144	SCBLC37F46CX11209
SCBLC37F35CH10943	SCBLC43F56CX11148	SCBLC37F06CX11210
SCBLC37F05CX10945	SCBLC37F86CX11150	SCBLF34F86CX11211
SCBLC37F95CH10946	SCBLC37F86CH11152	SCBLF34FX6CX11212
SCBLC37F05CH10947	SCBLC37F96CX11156	SCBLF34F16CX11213
SCBLC43F35CX10949	SCBLC42F46CX11157	SCBLF34F56CX11215
SCBLC37F45CX10950	SCBLC37F26CX11158	SCBDC43HX6CX11216



Wheel bolts with dimensional errors – RE07/02

SCBLC37FX6CH11217	SCBLC43F16CX11261	SCBLC43F26CX11303
SCBLC43F06CX11218	SCBLC43F36CX11262	SCBLC37F96CX11304
SCBLF34F96CX11220	SCBLC43F56CX11263	SCBLF34F66CX11305
SCBLC37F16CH11221	SCBLC43F76CX11264	SCBLF34F86CX11306
SCBLC37F96CX11223	SCBLF34F96CX11265	SCBLC37F46CX11307
SCBLC43F66CX11224	SCBLC43F06CX11266	SCBLF34F86CH11308
SCBLC37F96CH11225	SCBLF34F26CX11267	SCBLF34F36CX11309
SCBLC37F06CH11226	SCBLC43F46CX11268	SCBLC37F46CX11310
SCBLC43F16CX11227	SCBLC43F66CX11269	SCBLF34F16CX11311
SCBLF34F16CX11230	SCBLF34F26CX11270	SCBLF34FX6CH11312
SCBLF34FX6CH11231	SCBLC37F96CX11271	SCBLF34F16CH11313
SCBLC43F56CX11232	SCBLF34F66CX11272	SCBLC37F86CH11314
SCBLF34F36CH11233	SCBLC37F26CX11273	SCBLF34F06CX11316
SCBLC43F96CX11234	SCBLC37F66CX11275	SCBLF34F26CX11317
SCBLC37F56CX11235	SCBLF34F36CX11276	SCBLF34F06CH11318
SCBLC43F26CX11236	SCBLC43F56CX11277	SCBLC37F76CH11319
SCBLC43F46CX11237	SCBLF34F96CX11279	SCBLF34F96CH11320
SCBLC43F26CH11238	SCBLC43F16CH11280	SCBLC43F66CX11322
SCBLC43F46CH11239	SCBLC37F16CX11281	SCBLC42F66CX11323
SCBLF34F46CX11240	SCBLC43F56CH11282	SCBLF34FX6CX11324
SCBLC43F66CX11241	SCBLC43F76CH11283	SCBLF34F16CX11325
SCBLC43F86CX11242	SCBLC37F76CX11284	SCBLC37F46CH11326
SCBLC43F16CX11244	SCBLC43F06CH11285	SCBLC37FX6CX11327
SCBLC43F36CX11245	SCBLF34F66CX11286	SCBLF34F76CX11328
SCBLF34F56CX11246	SCBLC37F26CX11287	SCBLF34F96CX11329
SCBLC43F76CX11247	SCBLC43F86CH11289	SCBLC43F56CX11330
SCBLC43F96CX11248	SCBLC37F26CX11290	SCBLC42F56CX11331
SCBLC43F06CX11249	SCBLC43F66CH11291	SCBLF34F06CX11333
SCBLC43F76CX11250	SCBLF34F86CH11292	SCBLF34F46CX11335
SCBLC37F36CX11251	SCBLF34F56CX11294	SCBLF34F66CX11336
SCBLC43F06CX11252	SCBLC43F76CX11295	SCBLC43F86CX11337
SCBLC43F26CX11253	SCBLF34F96CX11296	SCBLC43FX6CX11338
SCBDC43H76CX11254	SCBLF34F06CX11297	SCBLF34F16CX11339
SCBDC43H56CH11255	SCBLC37F76CX11298	SCBLF34F86CX11340
SCBLC37F96CH11256	SCBLF34F46CX11299	SCBLF34FX6CX11341
SCBLC43FX6CX11257	SCBLF34F76CX11300	SCBLC37F66CX11342
SCBLC43F16CX11258	SCBLC37F36CX11301	SCBDC43H66CX11343
SCBLC43FX6CX11260	SCBLF34F06CX11302	SCBLC43F56CX11344



07-01-46-01

Wheel bolts with dimensional errors – RE07/02

SCBLF34F76CX11345	SCBLF34F26CH11384	SCBLF34FX6CX11422
SCBLF34F96CX11346	SCBLC37F26CX11385	SCBLF34F86CH11423
SCBLF34F06CX11347	SCBLF34FX6CX11386	SCBLF34FX6CH11424
SCBLC37F76CX11348	SCBLC42FX6CX11387	SCBDC43H86CX11425
SCBLF34F06CH11349	SCBLF34FX6CH11388	SCBDC43HX6CX11426
SCBLC37F16CH11350	SCBLC37FX6CX11389	SCBLC43F96CX11427
SCBLF34F26CX11351	SCBLC43F16CX11390	SCBLF34F06CX11428
SCBLC37F96CX11352	SCBLF34FX6CH11391	SCBLC37F76CX11429
SCBLF34F26CH11353	SCBLC37F66CH11392	SCBLF34F56CH11430
SCBLF34F86CX11354	SCBLF34F36CH11393	SCBLF34F76CH11431
SCBLC42F86CX11355	SCBDC43H86CH11394	SCBLF34F26CX11432
SCBLF34F86CH11356	SCBDC43HX6CH11395	SCBLF34F46CX11433
SCBLC43FX6CH11357	SCBLF34F96CH11396	SCBLC37F06CX11434
SCBLC43F56CX11358	SCBLC37F96CX11397	SCBLF34F86CX11435
SCBLF34F76CX11359	SCBLF34F26CH11398	SCBLC37F46CX11436
SCBLC37F86CX11360	SCBLC37F26CX11399	SCBLF34F16CX11437
SCBDC43H86CX11361	SCBLC43F06CX11400	SCBLC37F86CX11438
SCBDC43HX6CX11362	SCBLC37F76CX11401	SCBLF34F56CX11439
SCBDC43H16CX11363	SCBLF34F46CX11402	SCBDC43H46CX11440
SCBLC37F56CX11364	SCBLF34F66CX11403	SCBDC43H66CX11441
SCBLC37F76CX11365	SCBLF34F46CH11404	SCBDC43H46CH11442
SCBLF34F46CX11366	SCBLC43FX6CX11405	SCBDC43H86CH11444
SCBLC43F66CX11367	SCBLC37F66CX11406	SCBLC37F56CX11445
SCBLC37F26CX11368	SCBLC37F86CX11407	SCBLF41F66CH11446
SCBLC37F46CX11369	SCBLC37F66CH11408	SCBLC37F96CX11447
SCBLF34F26CH11370	SCBLF34F76CX11409	SCBLF34F66CX11448
SCBLC43F86CX11371	SCBLC37F86CX11410	SCBLC37F26CX11449
SCBLC37F46CX11372	SCBDC43H86CX11411	SCBLC37F96CX11450
SCBLC43F16CX11373	SCBDC43HX6CX11412	SCBLC37F76CH11451
SCBLC37F46CH11374	SCBLF34F96CX11413	SCBLF34F86CX11452
SCBLC43F56CX11375	SCBLC37F16CH11414	SCBLC37F46CX11453
SCBLC37F16CX11376	SCBLF34F96CH11415	SCBLF34F86CH11454
SCBLC37FX6CH11377	SCBLC37F96CX11416	SCBLC37F86CX11455
SCBLF34F06CX11378	SCBLC37F06CX11417	SCBLF34F16CH11456
SCBLC37F76CX11379	SCBLF34F86CX11418	SCBLC37F16CX11457
SCBLF34F56CH11380	SCBLC37F46CX11419	SCBLF34F96CX11458
SCBLC37F36CH11382	SCBLC43F66CX11420	SCBLC37F56CX11459
SCBLC37F96CX11383	SCBLC37F96CH11421	SCBLC42F56CX11460



07-01-46-01

Wheel bolts with dimensional errors – RE07/02

SCBLF34F96CX11461	SCBLC37F26CX11502	SCBDC43H16CX11542
SCBLF34F06CX11462	SCBDC43H96CH11503	SCBLF34F76CH11543
SCBLC43F26CX11463	SCBLC43F86CH11504	SCBLC37F76CX11544
SCBLF34F46CX11464	SCBDC43H26CH11505	SCBLC37F26CX11547
SCBLF34F26CH11465	SCBLC43F56CX11506	SCBLC37F66CX11549
SCBLF34F86CX11466	SCBDC43HX6CX11507	SCBLF34F86CX11550
SCBLC37F46CX11467	SCBLC37F36CX11508	SCBLC37F66CX11552
SCBLF34F86CH11468	SCBLC37F56CX11509	SCBLC37F16CX11555
SCBDC43H26CH11469	SCBLC37F86CH11510	SCBLF34F06CX11557
SCBDC43H96CH11470	SCBLF34F06CX11512	SCBLC37F76CX11558
SCBDC43H06CH11471	SCBLC37F76CX11513	SCBLF34F56CX11568
SCBDC43H66CX11472	SCBDC43H76CX11514	SCBLC37F26CX11578
SCBDC43H86CX11473	SCBLF34F26CH11515	SCBLC43F76CX11605
SCBLF34F36CH11474	SCBLC37F26CX11516	SCBLC43F76CX11619
SCBDC43H86CH11475	SCBDC43H26CX11517	SCBLC37F06CH11629
SCBDC43HX6CH11476	SCBLF34F16CX11518	SCBLC43F66CX11630
SCBDC43H56CX11477	SCBLC43F36CX11519	SCBLF45F37CX12000
SCBLC37F96CX11478	SCBDC43H96CH11520	SCBLF45F17CH12001
SCBLC37F06CX11479	SCBLF34F86CH11521	SCBLF44JX7CX12002
SCBLF34F26CX11480	SCBLF34FX6CH11522	SCBLF45F97CX12003
SCBLF34F46CX11481	SCBLC37F66CH11523	SCBLF45F27CX12005
SCBLF34F26CH11482	SCBLF34F76CX11524	SCBDC47LX7CX12009
SCBLC37F26CX11483	SCBLF34F56CH11525	SCBDC48HX7CH12010
SCBLF34F66CH11484	SCBLF34F06CX11526	SCBLE37G35CX19352
SCBDC43H46CX11485	SCBLF34F26CX11527	SCBLE37G55CX19353
SCBDC43H26CH11486	SCBLF34F46CX11528	SCBLE37G35CH19354
SCBDC43H86CX11487	SCBLF34F26CH11529	SCBLE37G75CH19356
SCBLC37F36CX11489	SCBLF34F96CH11530	SCBLE37G25CX19357
SCBLF34F16CH11490	SCBLF34F46CX11531	SCBLE37G45CX19358
SCBLC37F36CX11492	SCBLF34F66CX11532	SCBLE37G65CX19359
SCBLC37F56CX11493	SCBLF34F46CH11533	SCBLE37G45CX19361
SCBDC43H56CX11494	SCBLF34FX6CX11534	SCBLE37G25CH19362
SCBLF34F06CH11495	SCBLF34F16CX11535	SCBLE37G85CX19363
SCBDC43H56CH11496	SCBLF34FX6CH11536	SCBLE37G65CH19364
SCBLC43F86CX11497	SCBLF34F56CX11537	SCBLE37G85CH19365
SCBDC43H96CH11498	SCBLF34F96CX11539	SCBLE37G86CX19400
SCBLC37F66CX11499	SCBLC37FX6CX11540	SCBLE37G16CX19402
SCBLC37F76CH11501	SCBLC37F16CX11541	SCBLE42G36CH19403

07-01-46-01

Wheel bolts with dimensional errors – RE07/02

SCBLE37G56CX19404	SCBLE42G96CX19421	SCBLE37G76CX19436
SCBLE37G36CH19405	SCBLE37G56CH19423	SCBLE37G56CH19437
SCBLE37G76CH19407	SCBLE37G76CH19424	SCBLE37G06CX19438
SCBLE37G96CH19408	SCBLE37G46CX19426	SCBLE37G26CX19439
SCBLE37G46CX19409	SCBLE37G26CH19427	SCBLE37G56CH19440
SCBLE37G06CX19410	SCBLE42G36CX19429	SCBLE37G06CX19441
SCBLE42G66CX19411	SCBLE37G26CH19430	SCBLE42G26CH19442
SCBLE37G26CH19413	SCBLE42G16CX19431	SCBLE37G26CH19444
SCBLE42G36CX19415	SCBLE42G36CX19432	SCBLE42G96CX19449
SCBLE37G36CX19417	SCBLE37G16CX19433	SCBLX90A86CX19450
SCBLE37G56CX19418	SCBLE42G76CX19434	
SCBLE42G06CX19419	SCBLE42G96CX19435	

Bentley Bulletins are intended for use by experienced and trained technicians. If you lack the skills, tools, equipment and a suitable workshop for any procedure described in this document, we suggest you leave such repairs to an Authorised Bentley Dealer or other qualified workshop. See your Bentley Dealer for advice on whether your vehicle may benefit from the information contained within this document.

The information contained in this Bulletin is accurate at the date of publication. However, Bentley Motors regularly updates technical information. Please check with your Bentley Dealer that the Bulletin you intend to use contains the latest available information.

© Bentley Motors Limited. All Rights Reserved