



SAFETY RECALL 075

Dear IC Corporation Customer,

This notice is sent to you in accordance with the requirements of the National Traffic and Motor Vehicle Safety Act.

IC® has decided that a defect which relates to motor vehicle safety exists in the high pressure oil hose assemblies of certain RE school and commercial buses built 1/3/1996 thru 3/22/2004 with International's T444E V8 diesel engine.

REASON FOR THIS RECALL

Hose assemblies that supply high pressure oil to the engine's cylinder heads may deteriorate over time and allow oil to leak or mist in the engine compartment.

RISK TO MOTOR VEHICLE SAFETY

This leaking oil can catch fire possibly resulting in property damage, personal injury or death.

ACTIONS YOU SHOULD TAKE

If you wish to perform the repair yourself, instructions are attached to this notice.

If you **DO NOT** wish to perform this service yourself, please contact your local IC dealer to schedule an appointment to have your vehicle repaired.

The repair involves replacement of both high pressure oil hose assemblies.

Dealers will have instructions to inspect and/or repair your vehicle by **7/27/2007**.

This will be performed **free of charge** and may take approximately **30 minutes** to complete.

IF YOU DO NOT OWN THIS VEHICLE

Please fill out the enclosed green **Authorization for Recall Service** card so you will not be contacted again regarding this recall.

IF YOU NEED ASSISTANCE

Questions or comments can be directed to:
IC Corporation
PO BOX 6000
Conway, AR 72033

Or by email to:

shawn.finkbeiner@ic-corp.com

If you believe that IC has failed to perform this repair within a reasonable amount of time, or the existing condition was not remedied without charge, please follow the procedure described in the *Owner Assistance Guide* section in your Owner's Manual or call toll free 1-800-448-7825.

You may also wish to submit a complaint to:

Administrator
National Highway Traffic Safety Administration,
1200 New Jersey Avenue, S.E.
Washington, D.C., 20590

or call the toll-free Vehicle Safety Hot-Line at 1-888-327-4236 (TTY:1-800-424-9152) or go to <http://www.safercar.gov>.

LESSOR REQUIREMENTS

Federal regulations require that any vehicle lessor receiving this Recall notice must forward a copy of this notice to the lessee within ten days.

REIMBURSEMENT ELIGIBILITY

If you have previously paid for repairs as a result of this defect, you may be entitled to recovery of those expenses. See the attached instructions or contact your dealer for details

We request your prompt attention to the correction of this defect and apologize for any inconvenience this may cause you.

Sincerely,

IC CORPORATION



IC Corporation

751 South Harkrider, Conway, Ar 72302

A SUBSIDIARY OF INTERNATIONAL
TRUCK AND ENGINE CORPORATION

CUSTOMER SERVICE PROCEDURE

**SAFETY RECALL 07510
AUGUST 2007**

DEFECT DESCRIPTION

Hose assemblies that supply high pressure oil to the engine's cylinder heads may deteriorate over time and allow oil to leak or mist in the engine compartment.

This leaking oil can catch fire possibly resulting in property damage, personal injury or death.

MODELS INVOLVED

This Safety Recall involves certain RE school and commercial buses built 1/3/1996 thru 3/22/2004 with International's T444E V8 diesel engine.

PARTS INFORMATION

If you wish parts to be sent directly to your location, free of charge, please fill out your name and shipping address on the enclosed green, "AUTHORIZATION FOR RECALL SERVICE," card and **CHECK BOX #8**.

This recall only requires one (1) of the recall service kits below. Please review the vehicle build date to determine which kit you require.

Please indicate which kit part number you require, on the card.

If the vehicle was built between **1/3/1996** and **12/31/1998** or the engine serial number is **843990** or below, please use the following Recall Service Kit:

Part Number	Part Description	Quantity
8900199R91	KIT,RCL SVC T444E,MY 96-98 <i>This kit contains the following parts:</i> 1880024C1 RT Hose 1880070C1 LT Hose	1

If the vehicle was built between **1/1/1999** and **12/31/1999** or the engine serial number is between **843991** and **1233226** please use the following Recall Service Kit:

Part Number	Part Description	Quantity
8900200R91	KIT,RCL SVC T444E,MY 99 <i>This kit contains the following parts:</i> 1880025C1 RT Hose 1880070C1 LT Hose	1

If the vehicle was built on or after **1/1/2000** or the engine serial number is **1233227** or above, please use the following Recall Service Kit:

Part Number	Part Description	Quantity
8900201R91	KIT,RCL SVC T444E,MY 2000-04 <i>This kit contains the following parts:</i> 1880061C1 RT Hose 1880070C1 LT Hose	1

Each Recall Service Kit contains one (1) left bank hose and one (1) right bank hose.

NOTE: SOME VEHICLES BUILT AFTER 1/1/2000 MAY CONTAIN OLDER STYLE RIGHT BANK HOSE ASSEMBLIES.

Prior to obtaining a Recall Service Kit, please inspect the high pressure hose fitting located on the *DRIVER's* side of the engine valley.

PLEASE REFER TO THE FOLLOWING FIGURES:

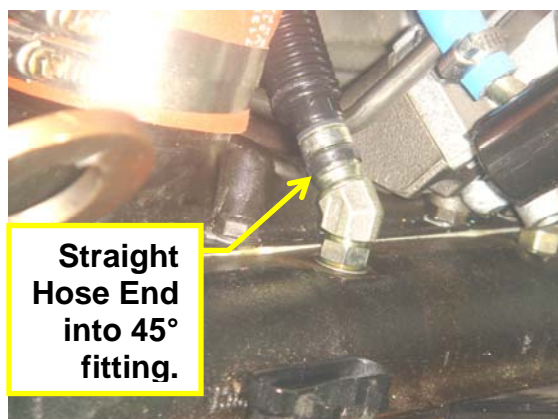


Figure A
8900200R91 – Older Style




Figure B
8900201R91 – Newer Style

- If your vehicle was built **after 1/1/2000** and its driver's side hose assembly fitting looks like **Figure A**, please **use 8900200R91**.

- If your vehicle was built **after 1/1/2000** and its driver's side hose assembly fitting looks like **Figure B**, please use **8900201R91**.

This **SERVICE PROCEDURE** also may require the use of a special **quick release tool**. This tool was provided with this notice. Additional tools can be obtained by purchasing them thru your nearest IC dealer.

SERVICE PROCEDURE

	<p><u>WARNING</u></p> <p><i>To AVOID SERIOUS EYE INJURY, ALWAYS WEAR SAFE EYE PROTECTION WHEN YOU PERFORM VEHICLE MAINTENANCE OR SERVICE.</i></p>	<p><u>WARNING</u></p> <p><i>To AVOID PROPERTY DAMAGE, PERSONAL INJURY, OR DEATH WHEN SERVICING THE VEHICLE, PARK ON A FLAT LEVEL SURFACE, SET THE PARKING BRAKE, SHUT THE ENGINE OFF AND CHOCK THE WHEELS.</i></p>
---	--	---

Please perform the following inspection to determine if further action is necessary:

1. Please refer to the attached TSI 07-12-09 for instructions on the proper high pressure oil line replacement procedure.
2. Please also note the high pressure oil hose assemblies are serviceable items and should be replaced every 161,000 km (100,000 miles).

END OF SERVICE PROCEDURE

LABOR INFORMATION

If you choose to replace the hose assemblies yourself, you will be compensated for your time by IC Corp.

To assist in processing this recall, it is important you provide an invoice to IC with the following information:

- VIN # (or List of VINs repaired)
- IC Safety Recall Number: **G-07510**
- Subject: **High Pressure Oil Hose Assemblies**
- Facilities Repair Labor Rate
- Applicable Labor Operation Numbers: **Listed Below**
- Your Tax ID Number

<u>Operation No.</u>	<u>Description</u>	<u>Time</u>
A40-07510-1	<i>Replace High Pressure Oil Hoses Assemblies</i>	0.6 hr

Please send all requested information to the following location for prompt processing:

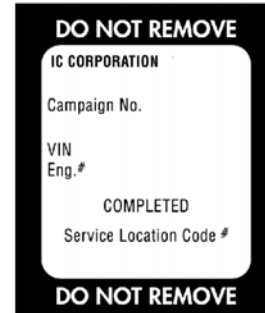
IC Corporation
Attn: COMPLIANCE DEPARTMENT
PO BOX 6000
Conway, AR 72033

CAMPAIGN IDENTIFICATION LABEL

*Each vehicle corrected in accordance with this campaign **must be** marked with a S00109 Campaign Identification Label.*

Complete the label and attach on a clean surface next to the vehicle identification number (VIN) plate.

This label was supplied to you in this mailing package.



REIMBURSEMENT OF REPAIRS COMPLETED PRIOR TO THE RELEASE OF THIS RECALL

If you paid to repair your vehicle for this defect up to one (1) year prior to receiving this recall letter, contact your local IC dealer, with your original repair documentation and proof of payment, and the service advisor will determine which, if any, of the repair costs will qualify for reimbursement. *IC dealers determine what repair costs are eligible for reimbursement.* However, if you choose not to work through an IC dealer, you may submit the enclosed "REQUEST FOR REIMBURSEMENT" form, repair documentation, and proof of payment to:

IC Corporation
Warranty Claim Center
Reimbursement Department
P.O. Box 888
Warrenville, IL 60555

IC CORPORATION

Technical Service Information



TSI-07-12-09

Date: June 2007

Subject File: Engine

Subject: New High-pressure Hose Assemblies

Engine Family: All International® T444E Diesel Engines

Description

New high-pressure hose assemblies are available. The wire braid of each new hose assembly has a silicon molded sheath to protect the hose from corrosive elements.

New part number hoses will be substituted for orders of old part number hoses.

Description	New Part No.	Old Part No.
High-pressure Hose Assembly	1880058C1	1824431C1
High-pressure Hose Assembly	1880069C1	1830931C1
High-pressure Hose Assembly – left	1880070C1	1831420C91
High-pressure Hose Assembly – right	1880061C1	1827889C91
High-pressure Hose Assembly – right	1880024C1	1831422C91
High-pressure Hose Assembly – right	1880025C1	1831685C91

Service Interval

Install new high-pressure hose assemblies every 161,000 km (100,000 miles).

Removal and Installation of High-pressure Oil Hose from Cylinder Heads to High-pressure Oil Pump

! WARNING: To prevent personal injury or death, dispose of oil or discard components, according to applicable regulations.

! WARNING: To prevent personal injury or death, do not let engine fluids stay on your skin. Clean skin and nails using hand cleaner and wash with soap and water. Wash or discard clothing and rags contaminated with engine fluids.

High-pressure Oil Hose (Threaded Couplings)

See *Engine Service Manual* for removal and installation procedures.

High-pressure Oil Hose (Quick Disconnect)

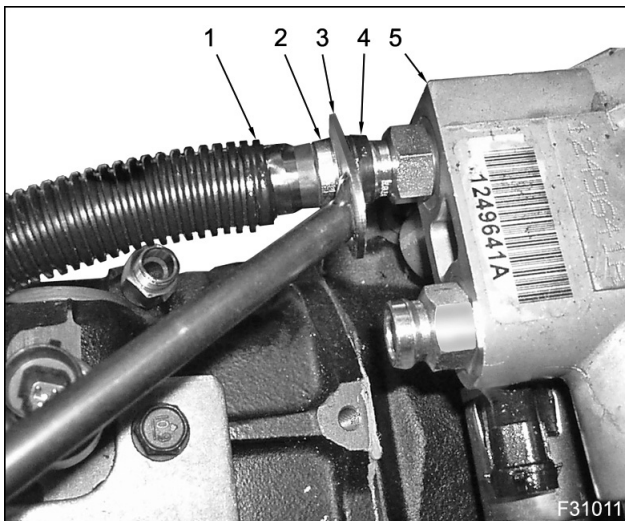


Figure 1 Disconnection of high-pressure oil hose

1. High-pressure oil hose
2. Steel flange
3. Quick disconnect tool
4. Rubber umbrella
5. High-pressure oil pump

1. Insert fork of the quick disconnect tool ZTSE4449 between the rubber umbrella and the steel flange on the high-pressure hose.

NOTE: Prying or leverage with the tool is not necessary and will only result in tool damage.

2. Pull lightly on the hose to remove it from the fitting.
3. Install high-pressure hoses. Make sure that you hear a click, when inserting hose end (steel flange) into quick disconnect connector.

CAUTION: To prevent engine damage, make sure high-pressure hose connections are secure.

4. Pull on hose connections to verify secure engagement.