



AMERICAN SUZUKI MOTOR CORPORATION
AUTOMOTIVE

December 5, 2007

IMPORTANT NEW "PE" RECALL CAMPAIGN NOTICE

To: All Suzuki Dealers
All Suzuki Dealership General Managers
All Suzuki Dealership Sales Managers
All Suzuki Dealership Service Managers
All Suzuki Dealership Parts Managers

Subject: Safety Recall Notice "PE" – (Shift Lock Solenoid)

Reference: All 2006 Grand Vitara with Automatic Transmission
Certain 2007's with Automatic Transmission
JS3T_94_74200001 ~ JS3T_94_74201871

Suzuki has decided to affect a voluntary safety recall on the referenced vehicles. In affected vehicles the automatic transmission selector lever parking lock function may be inoperative due to a sticking shift lock solenoid plunger. As a result, the shift lever will be able to be shifted out of park with the key removed and without depressing the brake pedal. Attached to this message are the following:

1. Technical Service Bulletin TS 05 12057
2. Campaign Bulletin SC-44
3. Sample Suzuki Owner Letter
4. Stop Sale List

American Suzuki Motor Corporation will be shipping today, sufficient repair parts to clear all listed units on stop sale. The part number is 28610-64J10, Unit Assy., Shift Lock.

Customers will be notified of this campaign after the holidays, beginning around January 7, 2008. We will ship additional parts for affected vehicles to your dealership, later this month. You will be advised when that occurs.

Sincerely,
AMERICAN SUZUKI MOTOR CORP.

Chuck Halper
VP, Service and Quality

Technical Bulletin

Division: Automotive
 Category: Technical

Section Title: Transmission
 TSB No. TS 05 12057

SUBJECT: SAFETY RECALL CAMPAIGN “PE”, SHIFT LOCK SOLENOID REPLACEMENT

MODEL(S): GRAND VITARA (JB627)

YEAR: 2006~2007

**AFFECTED VIN(S): ALL 2006 WITH AUTOMATIC TRANSMISSION
 CERTAIN 2007s WITH AUTOMATIC TRANSMISSION
 JS3T_94__74200001~JS3T_94__74201871**

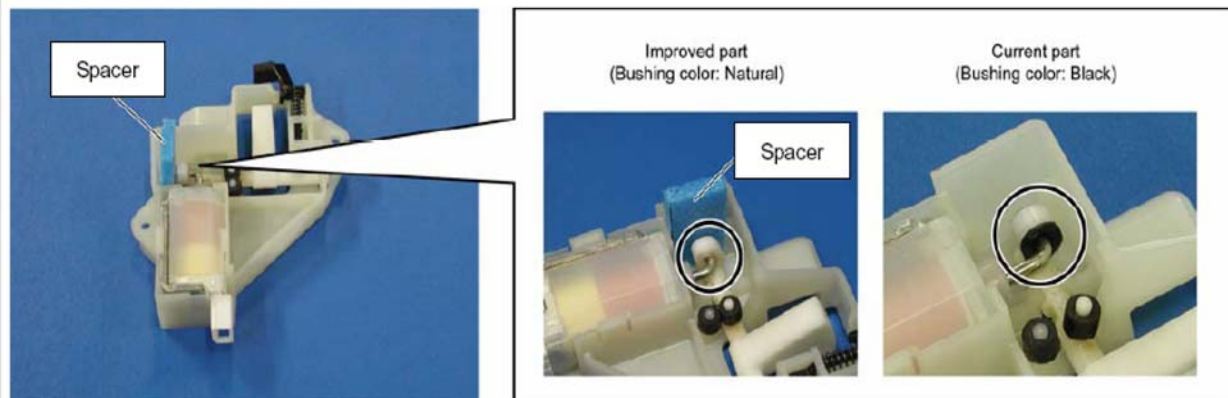
CONDITION: On affected vehicles, the automatic transmission shift selector lever parking lock function may be inoperative due to a sticking shift lock solenoid plunger. As a result, the shift lever will be able to be shifted out of “Park” with the key removed and without depressing the brake pedal.

CAUSE: Pivot bushing may bind at solenoid plunger

CORRECTION: Replace the shift lock solenoid assembly on any new, as well as in-stock used and customer vehicles regardless of vehicle age or mileage within the affected VIN range. See instructions below.

WARRANTY: Please refer to the Campaign Bulletin SC-44 for claim submission instructions and labor times.

The improved part is distinguished by color of the bushing.



NOTE: Remove spacer after installation.

Technical Service Department
 Dealership Circulation - Initial and file:

Service Manager	Parts Manager	Service Advisor	Technicians			

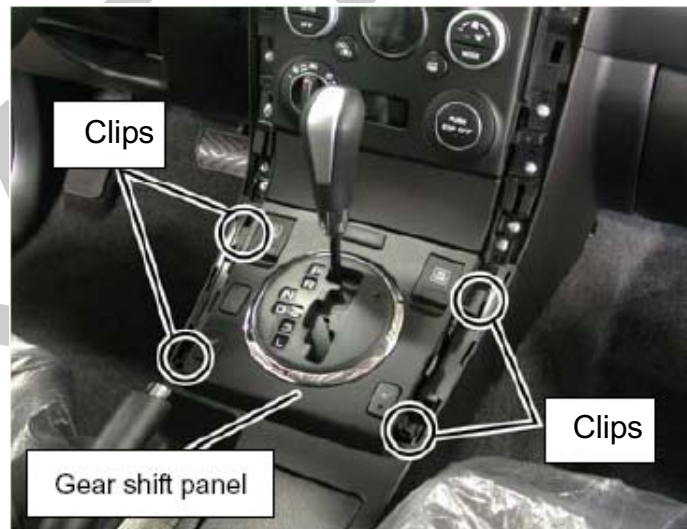
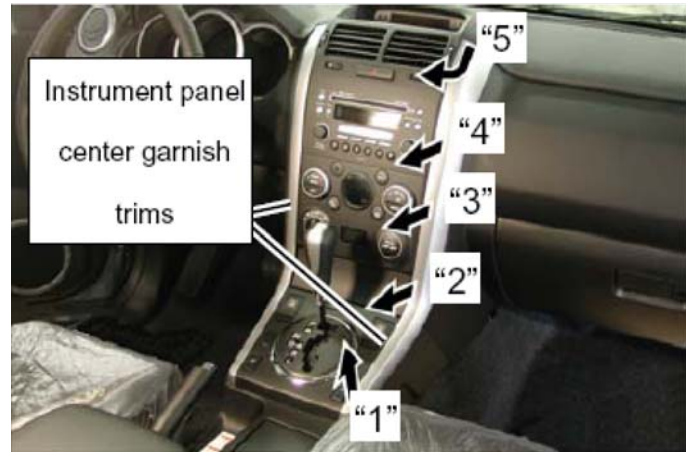
Solenoid Replacement Procedure:

1. Make sure ignition switch is "OFF" and shift position is "P".
2. Set parking brake.
3. Remove both instrument panel center garnish trim pieces by pulling the trim from the bottom (1) to the top (5) in arrow directions and in numerical order indicated.

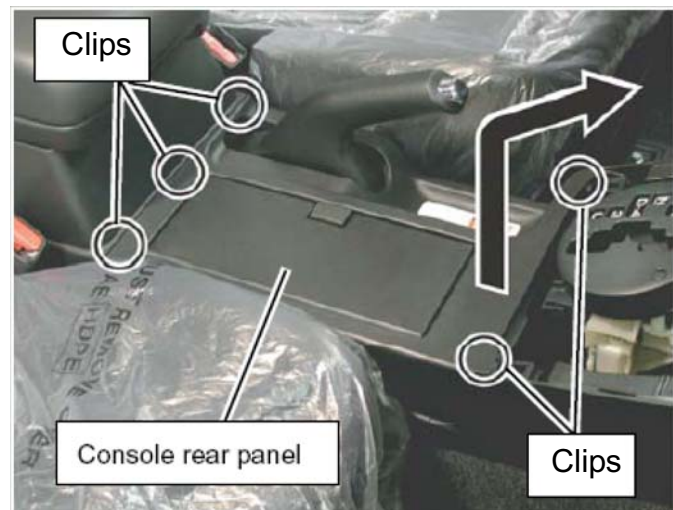
CAUTION:

Pull out anchoring clips one by one gently from underneath of instrument panel center garnish trim, in order to avoid damaging the anchoring clips.

4. Remove gear shift panel by pulling up on each corner near the anchoring clip and disconnect connectors of gear shift panel.



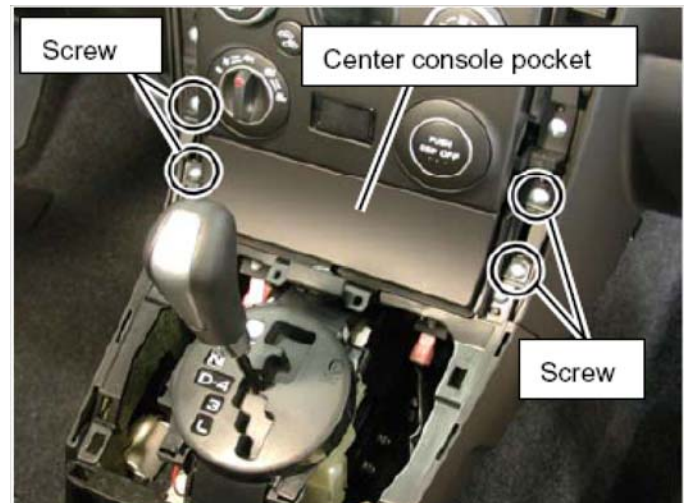
5. Pull up on console rear panel to disconnect five clips, and then remove console rear panel by pulling it in the arrow direction as shown in photo.



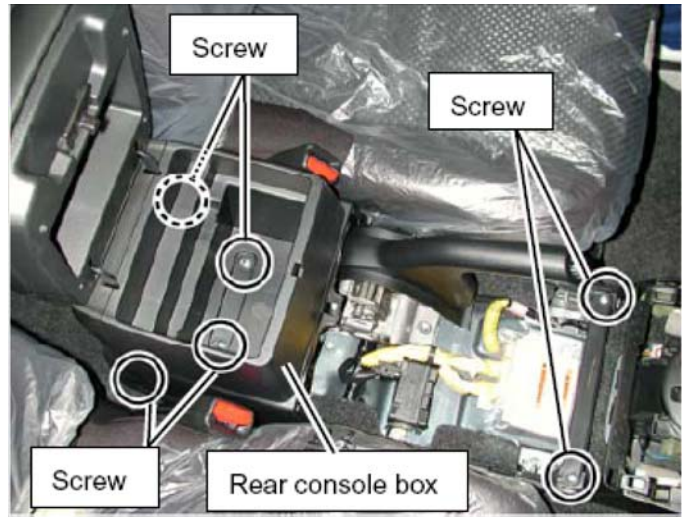
6. Release shift lock by pushing down release plunger of shift lock unit assembly as shown in photo, and then move select lever from "P" to "N".



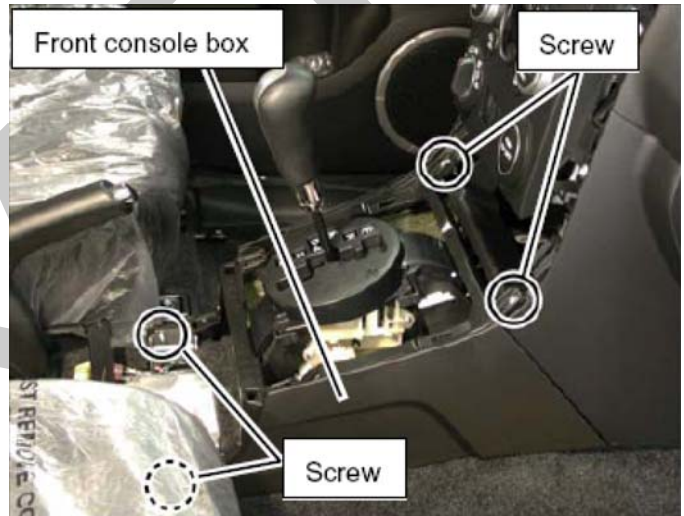
7. Remove center console pocket by removing four screws, then pulling pocket towards rear of vehicle to remove.



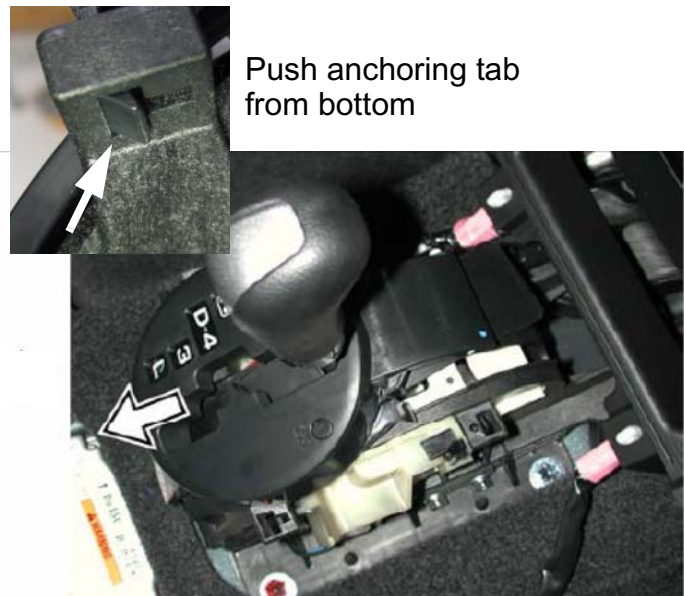
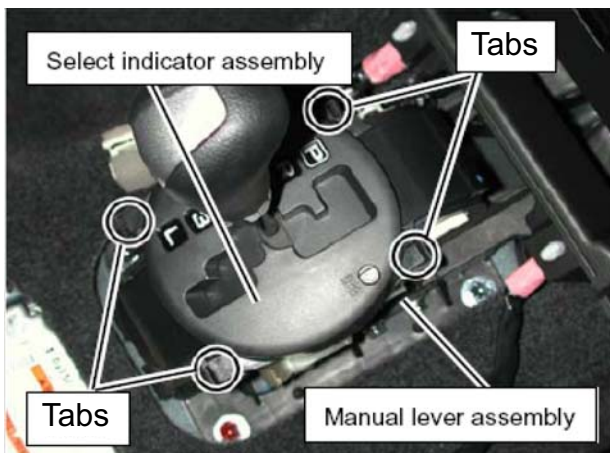
- 8. Remove the six screws holding the rear center console, then lift rear console from the rear and slide the console to the rear enough to uncover the screws for the front console box.



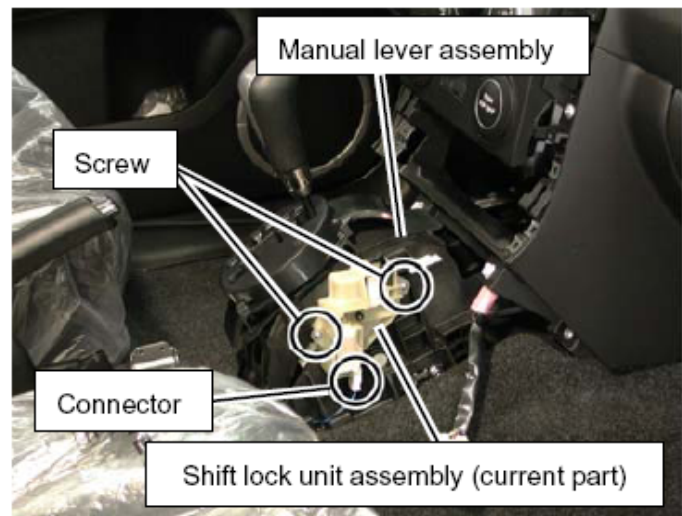
- 9. Remove the four screws from the front console box, then lift from the rear first and remove the front console box.



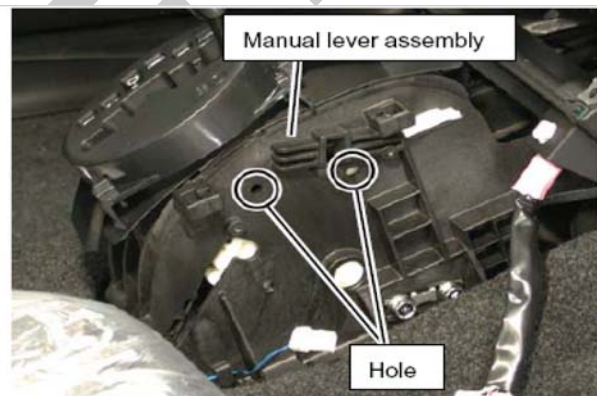
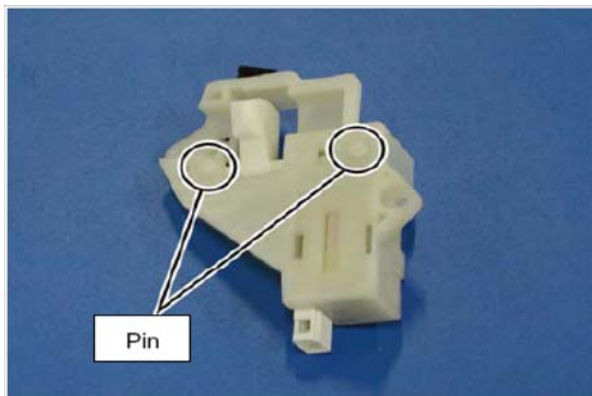
- 10. Separate select indicator assembly from manual lever assembly by pushing four anchoring tabs one by one, and then slide selector indicator back in arrow direction.



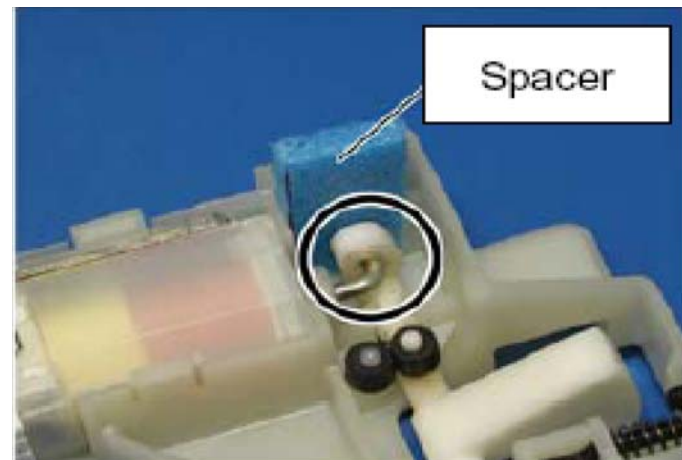
11. Remove two screws and connector first, and then remove shift lock unit assembly (current part) from manual lever assembly.



12. Install shift lock unit assembly (improved part) to manual lever assembly



13. Remove spacer from the shift lock solenoid after installation.
14. Re-assemble center console in reverse of removal procedure.



Service Bulletin

NUMBER: SC-44

PAGE: 1 of 3

SUBJECT: SAFETY RECALL NOTICE No. PE

MODEL: All 2006 and Certain 2007 Grand Vitara Vehicles Equipped With
Automatic Transmission

Suzuki Motor Corporation has decided that 2006 and certain 2007 Suzuki Grand Vitara vehicles equipped with an automatic transmission fail to conform to Federal Motor Vehicle Standard No. 114, Theft Protection. Suzuki has decided to conduct a recall campaign for these vehicles. The campaign code is "PE".

On affected vehicles, the automatic transmission selector lever "Park" lock function may be inoperative due to a sticking shift lock arm. As a result, the shift lever may be able to be shifted out of "Park" with the key removed and without depressing the brake pedal. This can give rise to increased incidents of crashes resulting from the rollaway of parked vehicles as a result of inadvertently moving the shift lever from the "Park" position when the parking brake is not fully engaged.

To correct the problem, Suzuki dealers are requested to replace the shift lock module. Refer to Grand Vitara Technical Bulletin Section: Transmission TSB No. TS 05 12057

1. Affected Vehicles

All 2006 Grand Vitara models equipped with automatic transmission

Certain 2007 Grand Vitara's equipped with automatic transmission
JS3T_94__74200001~JS3T_94__74201871

2. Owner Notification

Suzuki owners will be notified by mail starting around January 07, 2008 of this important safety recall. Please refer to the attached owner notification letter, **ATTACHMENT A**.

3. Dealers Campaign Responsibility

Dealers are to perform this safety recall campaign on any new, as well as all in-stock used and customer affected vehicles regardless of vehicle age or mileage.

ISSUED: 12/05/07

According to federal law, all affected in-dealer stock inventory, if any, subject to this Safety Recall campaign must be completed prior to the retail sale or lease of the affected vehicle.

The National Traffic and Motor Safety Act provides that each vehicle involved in a recall of this type must be repaired within a reasonable time after the customer tenders it for repair. If the condition is not adequately repaired within a reasonable time, the customer may be entitled to an identical or reasonably equivalent vehicle at no charge or to a refund of the purchase price less a reasonable allowance for depreciation. Effort must be made to promptly schedule an appointment with each customer and to repair their vehicle as soon as possible. In the recall notification letters, customers are told how to contact Suzuki Customer Relations, and the US National Highway Traffic Safety Administration if the recall is not completed within a reasonable time.

This safety recall campaign may have been previously performed by another dealer. Refer to Grand Vitara Technical Bulletin, Section: Transmission TSB No. 05 12057 for complete instructions.

4. Parts Information

<u>PART NUMBER</u>	<u>DESCRIPTION</u>	<u>QUANTITY</u>	<u>DEALER NET</u>
28610-64J10	Unit Assy, Shift Lock	1	\$ 18.15

Note: Price is current as of 11/2707. ASMC will send an initial quantity of parts to correct in-stock vehicles and launch the recall. You will be advised when that control shipment is made. Once those parts are depleted, please reorder enough campaign parts to meet the demand at your location.

5. Labor Hours and Claim Information

Basic Information-Replacement required

Campaign Code: PE
 Operation Code : GH9999
 Complaint Code: 99
 Defect Code : PE
 Labor Hours : 0.5 HRS.

6. SUZUKI CONNECT Submission Procedures

A) Basic Campaign Completion. Replace shift lock assembly.
 Refer to page 11-7, revised 06/01/03, Suzuki Service Policy and Procedures Manual.

Claim type number 2-Short Campaign Claim

Complaint Code: PE
 Variation Code : JB

- B) Replacement , repairs and/or sublets above the scope of the campaign.
Refer to page 11-8, revised 06/01/03, Suzuki Service Policy and Procedures Manual

Claim type number 3-Long Campaign Claim

Complaint Code : PE

Variation Code : JK

Actual hours : To be determined by the DSPM

Sublets : To be determined by the DSPM

7. Notes

- A) Only SUZUKI CONNECT claims will be accepted for this customer satisfaction campaign.
- B) Courtesy Vehicle Program does not apply. Owners are requested to schedule an appointment so vehicle is not down overnight.
- C) Replaced parts for variation code JB can be scrapped immediately.

8. Time and Mileage Limits

Applicable time and mileage limits do not apply.

Please inform all Service, Parts and Warranty Personnel accordingly.

If you have questions, please contact your Suzuki District Service and Parts Manager or the Warranty Assistance Helpline at 1-(800) 568-9968.

Chuck Halper, Vice President, Service and Quality

ATTACHMENT(s): A Sample Owner Notification Letter

IMPORTANT SAFETY RECALL NOTICE

Dear Suzuki Owner:

This notice is being sent to you in accordance with the requirements of the National Traffic and Motor Vehicle Safety Act.

Suzuki Motor Corporation has decided that 2006 and certain 2007 Suzuki Grand Vitara vehicles equipped with an automatic transmission fail to conform to Federal Motor Vehicle Standard No. 114, Theft Protection. According to our records, you own one of the vehicles affected by this recall.

On affected vehicles, the automatic transmission selector lever "Park" lock function may be inoperative due to a sticking shift lock arm. As a result, the shift lever may be able to be shifted out of "Park" with the key removed and without depressing the brake pedal. This can give rise to increased incidents of crashes resulting from the rollaway of parked vehicles as a result of inadvertently moving the shift lever from the "Park" position when the parking brake is not fully engaged.

To correct this condition, your Suzuki dealer will replace the shift lock module on your vehicle at no cost to you for parts and labor.

Please contact your Suzuki dealer to schedule an appointment for this Important Safety Recall. To locate your nearest Suzuki dealer, please see below or call toll free (877) 697-8985 or visit our website at <http://www.suzukiauto.com>. The online dealer locator includes driving instructions and maps. Recall instructions and parts have already been sent to your dealer and the recall can be completed in less than one hour if you have an appointment. If your dealer has a number of vehicles awaiting service, there may be additional time required. If you no longer own this vehicle, please complete the enclosed postage paid reply card and return it to us.

If your dealer does not make the correction without charge and within a reasonable period of time, we recommend that you contact the American Suzuki Customer Relations Department at (800) 934-0934. If after contacting our Customer Relations Department, you are still not satisfied we have done our best to remedy this condition without charge and within a reasonable time, you may wish to write the Administrator, National Highway Traffic Safety Administration, 1200 New Jersey Ave, SE., Washington, DC 20590 or call toll-free Auto Safety Hotline at (888) 327-4236 (TTY: 1-800-424-9153); or go to <http://www.safercar.gov>.

Federal regulation requires that any vehicle lessor receiving this recall notice must forward a copy of this notice to the lessee within 10 days.

If your vehicle is included in the recall and you have paid for repairs caused by a malfunctioning shift lock mechanism, you may be eligible for a full or partial reimbursement. Please note the following qualifiers:

- Only repairs that are the subject of the safety recall are reimbursable. Additional expenses such as towing, rental, accommodations, damage repairs, etc. will not be reimbursed.
- Reimbursement may be limited to suggested list price on parts and the Suzuki published flat rate labor time allowance.

ATTACHMENT A

- An owner will not be eligible for reimbursement if the expenses for the repairs are performed more than 10 days after the date of the last owner notification letter sent by Suzuki.
- Reimbursement claims may also be excluded when adequate documentation is not submitted by the claimant.

To obtain information or request reimbursement, contact your Suzuki dealer or the American Suzuki Motor Corporation, Automotive Customer Relations Department, PO Box 1100, Brea, CA 92822-1100 or call toll free (800) 934-0934. We will request an original or copy of your receipt for the recall repair or replacement, and your owner notification letter.

We will try to minimize your inconvenience in getting this recall performed. Continued satisfaction with your Grand Vitara is important to all of us here at Suzuki.

Sincerely,
AMERICAN SUZUKI MOTOR CORPORATION

A handwritten signature in black ink, appearing to read "Chuck Halper". The signature is written in a cursive, flowing style.

Chuck Halper
Vice President, Service and Quality

Dealer # 161993 JS3TE944064101316	Dealer # 406074 JS3TD944474200161	JS3TE941174200217	JS3TD944174201042 JS3TD947974201106
Dealer # 401161 JS3TD944274200286 JS3TE944274200334	Dealer # 406198 JS3TD941074200714 JS3TD941X74200719 JS3TD944574200749 JS3TD944674200890	Dealer # 410624 JS3TD947274200329 JS3TD947774200956 JS3TD947874200352 JS3TE944374201315	Dealer # 413224 JS3TE941174200332 JS3TE941974200336
Dealer # 401250 JS3TD947774200343	Dealer # 406244 JS3TD944574200069 JS3TD944774200915 JS3TD947074201043	Dealer # 410659 JS3TE944774200524	Dealer # 413232 JS3TD944574200542 JS3TD947874201274
Dealer # 401293 JS3TE944774200233	Dealer # 406252 JS3TD941174200785 JS3TD941X74200588 JS3TD944574200914 JS3TD944X74200035 JS3TD947074200698	Dealer # 410683 JS3TE941874200568 JS3TE944674201342 JS3TE944X74200159	Dealer # 413240 JS3TD947174200502
Dealer # 402133 JS3TE944174200938	Dealer # 406260 JS3TD947774200861	Dealer # 410691 JS3TD947674200320	Dealer # 413267 JS3TD947174201052 JS3TD947274201139
Dealer # 402230 JS3TE944274201211 JS3TE944874201617 JS3TE944X74201649	Dealer # 407054 JS3TD947X74200076	Dealer # 410780 JS3TE947774200372	Dealer # 413291 JS3TD947274200508 JS3TE941574200298
Dealer # 402311 JS3TD941474200988 JS3TD941974200551	Dealer # 407062 JS3TD947174200712 JS3TD947374201053	Dealer # 411027 JS3TD947774200438	Dealer # 414026 JS3TE944674201602
Dealer # 402338 JS3TE941374200431 JS3TE941874200506 JS3TE944074200820 JS3TE944074200851 JS3TE947174200254	Dealer # 409065 JS3TE944774201544	Dealer # 412090 JS3TD941474200392 JS3TD944464100317 JS3TE947864100828	Dealer # 414050 JS3TD941274200486
Dealer # 402397 JS3TD944974200611 JS3TE944274201788 JS3TE947874200428 JS3TE947X74200205	Dealer # 409308 JS3TD947974200361 JS3TD947X74200983 JS3TE944174201538 JS3TE944X74200324	Dealer # 412228 JS3TD944174200506 JS3TD944964102788	Dealer # 414123 JS3TD944274200899
Dealer # 402427 JS3TD947174200693	Dealer # 409499 JS3TE947274200022 JS3TE947974200051	Dealer # 412406 JS3TE941074200869	Dealer # 416177 JS3TD941774201004
Dealer # 403237 JS3TE944574201249 JS3TE944874201827 JS3TE947774200503	Dealer # 409626 JS3TE947074200326 JS3TE947874200316	Dealer # 412430 JS3TD944X74200388	Dealer # 416185 JS3TD944274200997
Dealer # 404578 JS3TD944674200601 JS3TE941774200335 JS3TE947074200147	Dealer # 409669 JS3TE944374200262	Dealer # 412481 JS3TD947174200435	Dealer # 416207 JS3TE941374200199
Dealer # 404772 JS3TE944374201248	Dealer # 409723 JS3TE944274201421	Dealer # 412554 JS3TD943064102704 JS3TD943164100797	Dealer # 417203 JS3TE944174201202
Dealer # 404810 JS3TE941074200421 JS3TE944774200782	Dealer # 409820 JS3TE944474200321	Dealer # 412570 JS3TD941474200926 JS3TD944074200495 JS3TD947674200530 JS3TE941274200310	Dealer # 417319 JS3TE941674200522
Dealer # 405310 JS3TD944674201103	Dealer # 409839 JS3TE944074201420	Dealer # 412597 JS3TE944574200604	Dealer # 417335 JS3TD947174200371
Dealer # 405418 JS3TD944774201112	Dealer # 410365 JS3TE944474201534	Dealer # 412627 JS3TD944674201196	Dealer # 417343 JS3TE944274200740 JS3TE944474200903 JS3TE947374200501
Dealer # 405426 JS3TD947374201280	Dealer # 410500	Dealer # 412651 JS3TD947074200460	Dealer # 419176 JS3TD941274200049
		Dealer # 413089 JS3TD947174200421 JS3TD947474200414	Dealer # 419214 JS3TD944X74200049
		Dealer # 413186	Dealer # 419397 JS3TD947074200880 JS3TD947X74200904
			Dealer # 419443 JS3TD947174200869
			Dealer # 419494

JS3TD947474201000

Dealer # 420085

JS3TD941874200718

Dealer # 420220

JS3TD944274200692

JS3TD947174200029

Dealer # 420336

JS3TD944874200079

JS3TD947674200270

Dealer # 420360

JS3TD941074200308

JS3TD941974200937

JS3TD944174200280

JS3TD944374200734

Dealer # 420417

JS3TD947574200728

Dealer # 421022

JS3TD941074200888

Dealer # 421146

JS3TD944174200408

Dealer # 421316

JS3TD944174200411

JS3TE947764104904

Dealer # 421359

JS3TD944574201206

Dealer # 421383

JS3TD944574201013

JS3TD947X74201261

Dealer # 421448

JS3TE941674200312

Dealer # 421499

JS3TD941774200905

JS3TD941874200914

JS3TD944474200449

Dealer # 422177

JS3TD943664101587

Dealer # 422193

JS3TD941274200424

Dealer # 422231

JS3TD941X74200414

JS3TD947974200991

Dealer # 423203

JS3TE944174200535

JS3TE947374200336

Dealer # 423246

JS3TE944174200146

JS3TE944474200030

JS3TE944774200118

Dealer # 423262

JS3TD947674200365

JS3TE947974200101

Dealer # 424153

JS3TD944074201081

Dealer # 424242

JS3TD947674200494

Dealer # 424277

JS3TD947X74200465

Dealer # 427055

JS3TE941474200440

JS3TE941774200447

Dealer # 427098

JS3TD947474200655

JS3TE941374200428

JS3TE944974201710

Dealer # 427128

JS3TE944474201632

Dealer # 428094

JS3TD941X74200042

JS3TD944674200808

Dealer # 428124

JS3TD941X74200820

JS3TD947574200745

Dealer # 429171

JS3TD941074200793

Dealer # 429279

JS3TD941274200147

JS3TD941474200179

JS3TD941874200220

JS3TD944274200191

Dealer # 429317

JS3TD941X74200056

JS3TD947074200023

Dealer # 429384

JS3TD944474200838

JS3TD944474200869

JS3TD947074200037

Dealer # 429422

JS3TD941174200754

Dealer # 429465

JS3TD944374200233

JS3TD944774200140

JS3TD944874200227

Dealer # 430110

JS3TD947074200636

Dealer # 430145

JS3TD944674200596

JS3TE941974200448

Dealer # 431370

JS3TD941664101555

Dealer # 431427

JS3TD941374200562

Dealer # 431435

JS3TD944774200722

Dealer # 431575

JS3TD947174200158

JS3TD947274201044

JS3TD947574200034

JS3TD947774200794

JS3TD947974200764

Dealer # 431729

JS3TD944974200169

Dealer # 431745

JS3TD941574200837

Dealer # 431753

JS3TD944474200757

Dealer # 431761

JS3TD944X74200147

Dealer # 431885

JS3TD944974200866

JS3TD944X74200858

JS3TD947274200265

Dealer # 432113

JS3TE941474200230

Dealer # 432164

JS3TE944074200574

JS3TE944274200463

JS3TE944874201357

JS3TE947474200023

Dealer # 432237

JS3TD947X74200367

Dealer # 432466

JS3TD947174200287

Dealer # 432539

JS3TE941774200836

JS3TE944074201336

Dealer # 432555

JS3TE947174200318

JS3TE947774200291

Dealer # 434272

JS3TD941374200366

JS3TD944574200461

JS3TD947474201062

Dealer # 434310

JS3TD947574200437

Dealer # 434329

JS3TE941X74200331

Dealer # 434434

JS3TE941474200339

Dealer # 434485

JS3TD941374200853

Dealer # 434663

JS3TD941474200859

JS3TE941774200318

Dealer # 434671

JS3TD941274201007

JS3TD941374200934

JS3TD941674200913

JS3TD941774200998

JS3TD941974200453

JS3TD944874200468

Dealer # 435155

JS3TE944574201025

Dealer # 435201

JS3TE941674201041

JS3TE944374201637

Dealer # 436194

JS3TD947174200466

Dealer # 436240

JS3TD944274200532

JS3TD944X74200990

Dealer # 436305

JS3TD944774200414

Dealer # 437409

JS3TD947574200079

Dealer # 437549

JS3TD941074200700

JS3TD944874200843

JS3TE944474200724

Dealer # 437700

JS3TD941474200800

JS3TD941X74200803

Dealer # 437735

JS3TD941674200328

JS3TD941874200217

JS3TD941X74200266

JS3TD947074200250

JS3TD947174200709

JS3TD947474200252

JS3TD947X74200238

JS3TD947X74200255

JS3TD947X74200773

Dealer # 437751

JS3TD944374200846

Dealer # 439053

JS3TE947874200011

Dealer # 439169

JS3TD944874200275

JS3TE944074201529

JS3TE944074201546

JS3TE944674201535

JS3TE944X74201408

Dealer # 441171

JS3TE944774201561

Dealer # 441341

JS3TD944374200331

Dealer # 441376

JS3TE947474200071

Dealer # 441384

JS3TD941474200005

JS3TD944474200306

JS3TE944174201328

Dealer # 442208

JS3TE944374201542

Dealer # 442305

JS3TE944174200826

JS3TE944274201709

JS3TE944474201629

JS3TE944774200877

JS3TE944974200928

Dealer # 442712

JS3TE947274200201

Dealer # 442860

JS3TD944474201049

JS3TE944574201817

JS3TE944874201052

Dealer # 442909

JS3TE944174201233

JS3TE944274201662

JS3TE944374201668

JS3TE944474200660

JS3TE944674201695

JS3TE947774200498

Dealer # 443085

JS3TD941374200402

JS3TD941774200404

JS3TD944174200425

JS3TD944374200443

JS3TD944674200968

JS3TD944774200428

JS3TD944874200423

JS3TD944974200480

Dealer # 443131

JS3TE941274201036

Dealer # 443166

JS3TD944074200657

Dealer # 444022

JS3TD944374200894

Dealer # 444030

JS3TD944274201017

Dealer # 445002

JS3TD941474200313

JS3TD944174200795

JS3TD944374200779

JS3TD944574200685

JS3TD944574200928

JS3TD944674200873

JS3TD944974200768

JS3TD947574200244

JS3TD947X74200272

Dealer # 445274

JS3TD941774200757

JS3TD941X74200638

JS3TD944374200829

JS3TD947474200008

Dealer # 445282

JS3TE947874200266

Dealer # 445401

JS3TD941874200766

JS3TD947074200118

Dealer # 445479

JS3TD944774200736

JS3TD947774201038

JS3TD947874200870

Dealer # 446165

JS3TD944374200362

Dealer # 446254

JS3TD944274200479

Dealer # 446475

JS3TD941274200519

JS3TD944174200568

Dealer # 446483

JS3TD944074200545

Dealer # 447064

JS3TD941274200133

JS3TD944774200851

JS3TD947874200108

JS3TD947874200142

Dealer # 447137

JS3TD947974200120

JS3TE941864102140

Dealer # 447153

JS3TD944174200148

JS3TD944X74200150

Dealer # 448303

JS3TD944174200540

JS3TD944974200995

JS3TD947774201296

Dealer # 449016

JS3TD941274200956

Dealer # 452025

JS3TD947X74200370

Dealer # 452041

JS3TE941174200038

JS3TE944X74201280

Dealer # 452092

JS3TD944474200337

JS3TE944874200290

Dealer # 452203

JS3TE944274201435

Dealer # 452211

JS3TE941274200727

JS3TE944074200445

JS3TE944X74200405

JS3TE947874200364

Dealer # 452335

JS3TE947664101072

Dealer # 452394

JS3TD947674200382

JS3TE941774200691

JS3TE944374200648

JS3TE944574201297

Dealer # 454508

JS3TD944364101006

JS3TE941774200349

JS3TE941974200370

Dealer # 454516

JS3TD944774201160

Dealer # 454796

JS3TD947974200599

JS3TE941274200520

JS3TE941874200926

JS3TE947574200161

JS3TE947874200154

Dealer # 454974

JS3TD941X74200865

JS3TD944474200676

JS3TE947674200394

Dealer # 455032

JS3TE944174201006

JS3TE947774200470

Dealer # 455075

JS3TE944874201794

Dealer # 455083

JS3TE944874201049

JS3TE944874201066

JS3TE944X74201070

Dealer # 455172

JS3TE941974201051

JS3TE944874201682

Dealer # 455253

JS3TE941074201021

JS3TE941074201052

JS3TE941174200766

JS3TE941174201044

JS3TE941974200398

JS3TE941X74200832

Dealer # 455318

JS3TE944474201713

Dealer # 455334

JS3TE944X74201098

Dealer # 455377

JS3TE941574200852

Dealer # 455415

JS3TD944474201097

Dealer # 455466

JS3TD944X74201167

Dealer # 464058

JS3TE941374200896

JS3TE941574200527

JS3TE944274201063

JS3TE944974201030

Dealer # 464066

JS3TE941074200399

JS3TE944674200790

Dealer # 464090

JS3TE944074201255

Dealer # 464163

JS3TE941174200413

JS3TE944774201818

Dealer # 464511

JS3TE941474200986

JS3TE947374200255

JS3TE947674200220

Dealer # 464562

JS3TD944974200608

Dealer # 464880

JS3TD944774200641

JS3TD944X74200567

JS3TD947374201182

Dealer # 464937

JS3TE944674201261

JS3TE944774200992

JS3TE947674200248

Dealer # 998699

JS3TE947764104613