

Dealer Operation/ General Manager	Sales- Motorcycles	Sales - Used Motorcycles	Business Manager (F&I)	Service	Parts & Accessories	Administration
Date: September 2007 Bulletin #: 27 001 07 (045)		Source: SI 28/2007 BMW Motorrad USA Service and Technical				



BMW Motorrad USA

Service Information Bulletin

Advance Notice of Recall-Check Chain Tensioner (K15)

Recall 07V-367

Subject: Checking chain tensioner

Model: G 650 X series (K15)

NHTSA Statement: Under the National Traffic and Motor Vehicle Safety Act of 1966, as amended, if there has been a recall campaign, dealers must assure that all new vehicles and new items of replacement equipment are free of safety defects and comply with all applicable Federal Motor Vehicle Safety Standards at the time of delivery to the consumer. This means that dealers may not deliver new motor vehicles or new items of replacement equipment to consumers unless the safety defect or noncompliance has been remedied before delivery.

Motorcycles Affected: Across all three G650 series, 1317 motorcycles manufactured in the period from mid-March to end of April **could** be affected.

Details: There is a possibility that some motorcycles in the series as stated above might have the wrong chain tensioner installed on one side. We have had reports of motorcycles with the left chain tensioner (see Fig. 1) incorrectly installed on the right-hand side. If the wrong chain tensioner is installed, the hex nut is seated against only two ribs of the chain tensioner (see Fig. 4). Under these circumstances a gap is visible between the washer and the recess in the chain tensioner.

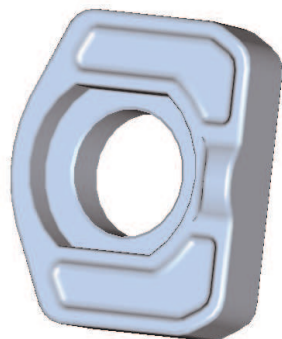


Fig. 1: Left chain tensioner

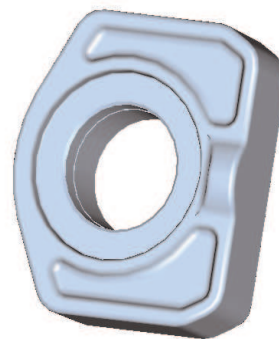


Fig. 2: Right chain tensioner

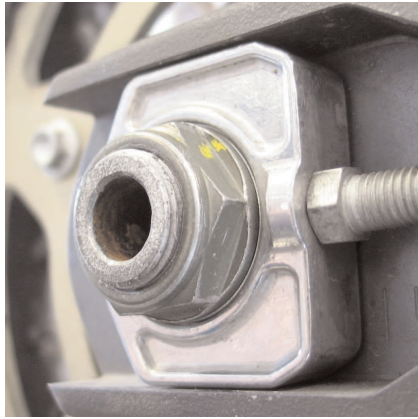


Fig. 3: Correctly installed, right

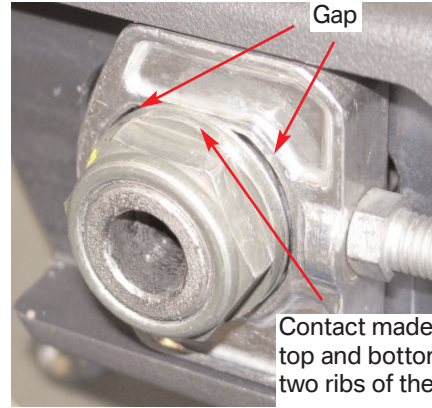


Fig. 4: Incorrectly installed, right

Production Solution: The correct chain tensioners are installed during manufacturing and rechecked in the final inspection.

Aftersales Solution: In order to determine if a specific motorcycle is affected by this Technical Campaign, it will be necessary to verify all motorcycle VINs through a DCS Vehicle History Check. Based on the response of the system, either proceed with the repair or take no further action. If the wrong chain tensioner is installed, it must be removed and the correct chain tensioner installed in its place. Please note that if the hex nut and/or washer show signs of damage these parts have to be replaced as well. Installation of the washer (36 31 7 708 007) is not documented in the Repair Manual (RepROM). It is essential to install the washer. The appropriate passage in the repair manual will be corrected in the next issue (RSD 09/2007).

Warranty: The repair described in this bulletin is covered under the BMW New Motorcycle Limited Warranty regardless of time or mileage.

Warranty Information: Reimbursement for the Technical Campaign will be via normal claim entry utilizing the following information:

Defect code : 00 00 27 08 00 Checking chain tensioner

Scenario #1 Inspection Only:

FRU code: 00 60 163 Inspection of chain tensioner
(5 FRU)

No parts claim.

Scenario #2 Inspection and replacement of chain tensioner:

FRU code: 00 60 163 Inspection and replacement of
chain tensioner
(5 FRU)

Part No.: 27 72 7 696 653 Chain tensioner, right
 36 31 7 708 007 Washer
 36 31 7 697 098 Hex nut

It is correct that this one labor operation is to be used for both scenarios. You will find that few motorcycles actually need replacement of the chain tensioner and for most a simple visual inspection is all that is needed.

Contact: Service and Technical Manager