



Innovative Products for the Transportation Industry

MANUFACTURERS OF:

Cabmate™ Cab Air Suspension
Ultra Ride® Chassis Air Suspension
Liftable Suspensions
Cat's Eye™ Tire Pressure Maintenance System
Cargo Management Products

Service Bulletin

5/21/2007

To UltraRide Suspension Dealers

A small number of field failures have been reported relative to the lateral control rod bracket of the GM C4500/5500 4x2 UltraRide® suspension, part number 8M000070. Specifically, this lateral control rod bracket out of the axle kit for the 13.5K GM C4500/5500 4x2 suspension, part number 8M000072, has developed cracks in these reported failures.

As a result, Link Manufacturing, Ltd has made a running change to this lateral control rod bracket. The axle kit part number for the GM C4500/5500 4x2 13.5K suspension is now 8M000092. While the number of reported failures is low, we want you to be aware of this issue. Link® is asking that you please contact all customers that you have sold the 8M000070 UltraRide suspension with the 8M000072, 13.5K, axle kit to. These customers should have the lateral control rod bracket inspected during routine maintenance. If any defects are found, please call our Customer Service Department immediately at 1-800-222-6283. Accompanying this letter is a drawing and picture showing where to inspect. Please call us with any questions you have. We regret any inconvenience that this may cause.

Sincerely,

Benjamin Vande Griend
Customer Service Supervisor
Link Manufacturing, Ltd.
223 15th St. N.E.
Sioux Center, IA 51250

800M1041

GM LCR BRACKET SERVICE KIT



INTENDED USES

- ❑ This kit is intended for use on 2006-Newer GMC 4500/5500 4X2 vehicles with 13.5K (HD2 RPO) rear axle. Vehicle must also be equipped with Link Mfg. UltraRide suspension, Part Number 8M000070. This kit will replace the 800M0122 Lower Lateral Control Bracket. This kit also contains a new Upper Axle Plate, and Height Control Valve Linkage, that will replace the existing ones.

PRODUCT INSTALLER RESPONSIBILITIES

- ❑ Installer is responsible for installing the product in accordance with Link Mfg. specifications and installation instructions.
- ❑ Installer is responsible for replacing current fasteners with new fasteners provided in kit, and tightening to torque values specified in chart below.
- ❑ Installer is responsible for checking necessary clearance required or necessary for suspension components, axles, wheels, tires, exhaust and other vehicle components to ensure a safe and sound installation and operation.

INSTALLATION:

DISASSEMBLY

1. With Rear of Vehicle supported, remove the following items, shown in Fig. 1. Keep all OE Axle shims and components. These components will be re-used in the same orientation they are currently installed.
2. Remove Driver Side Valve Linkage.
3. Detach driver side of Lateral Control rod by removing existing 5/8 UNF fastener.
4. Remove (2) 20mm U-Bolts, (1) 5/8 UNF U-Bolt and nuts that attach the Driver Side Spring Arm and Lower Lateral Control Bracket.
5. Remove existing 800M0122 Lower Lateral Control Rod Bracket.

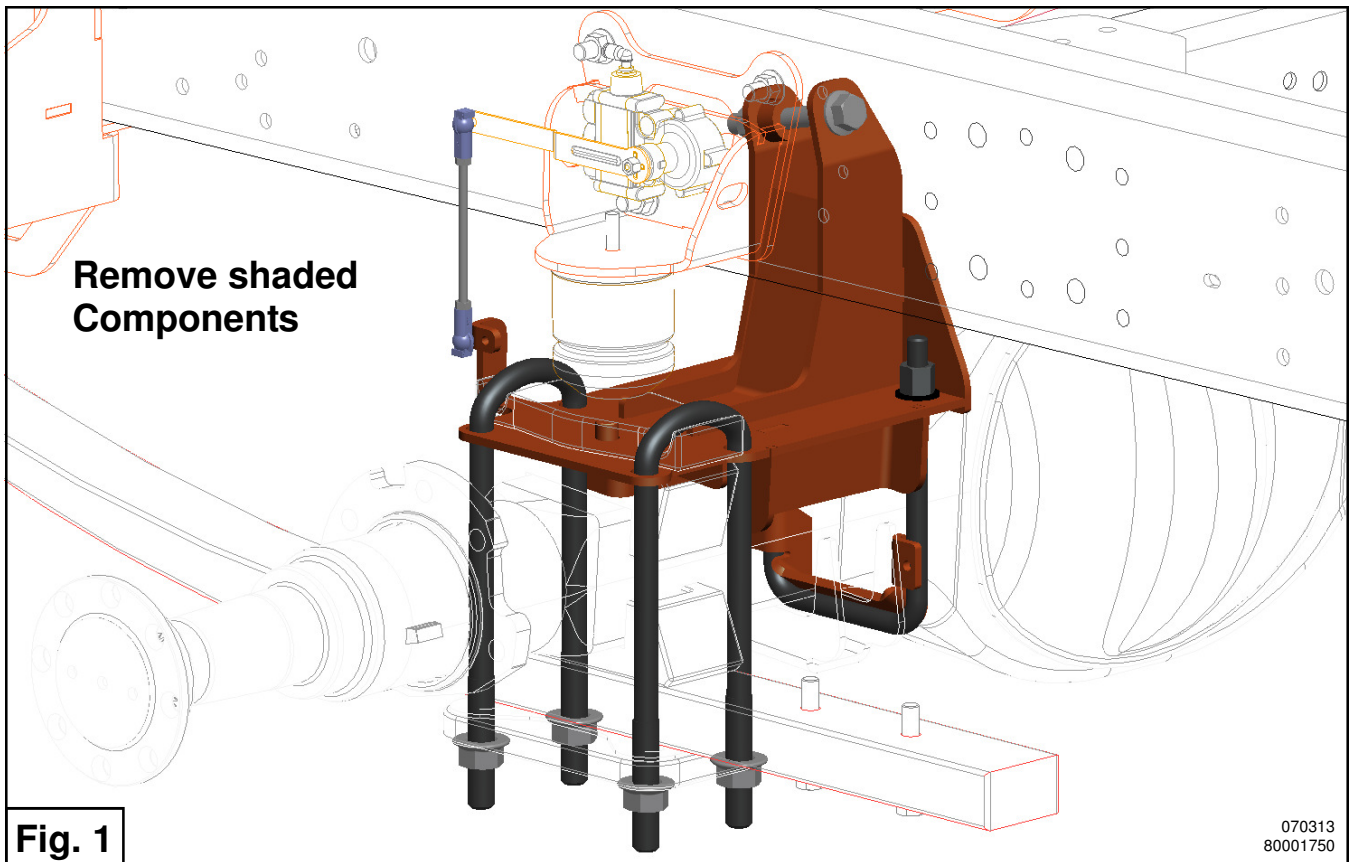
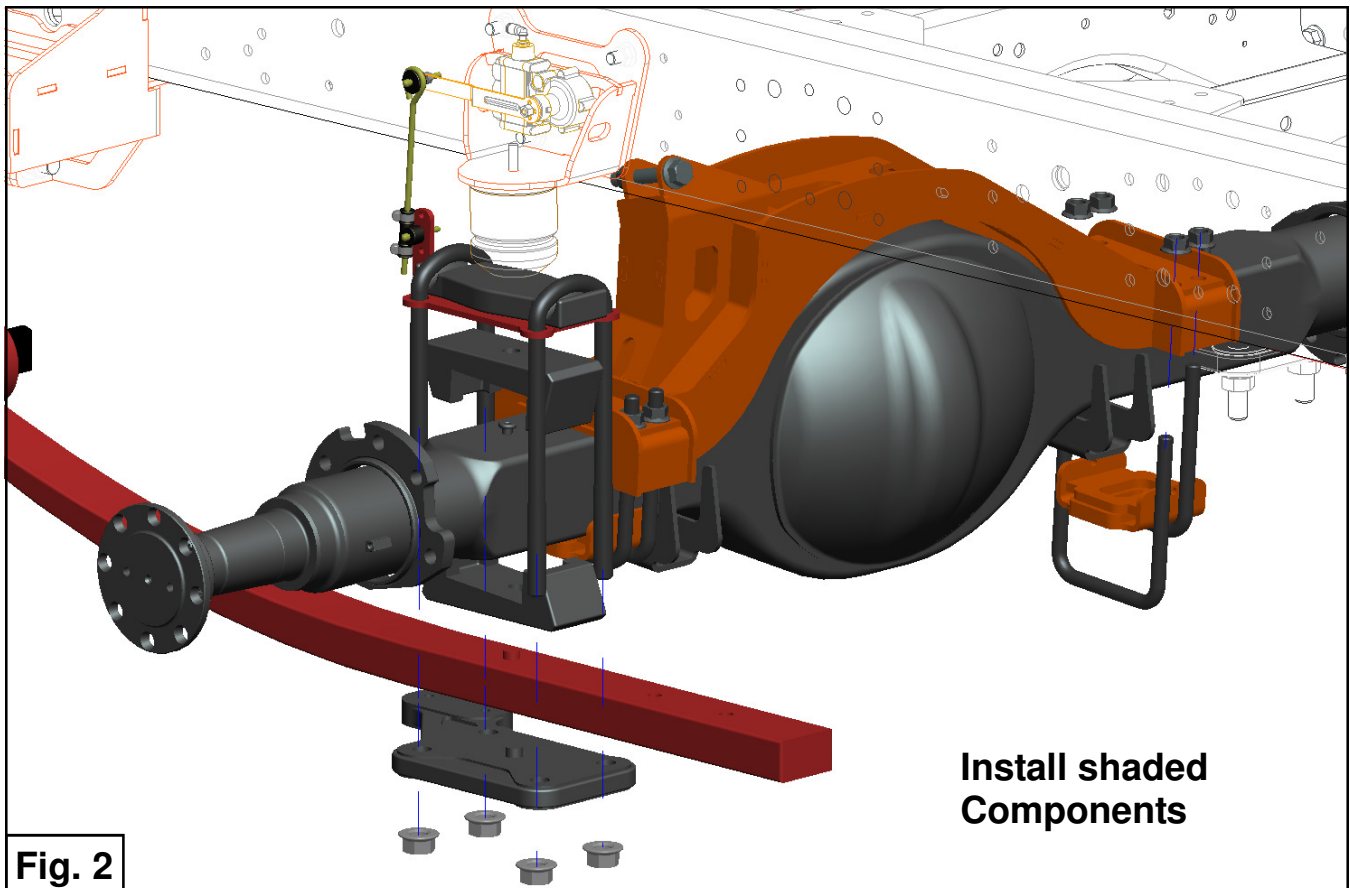


Fig. 1

070313
80001750

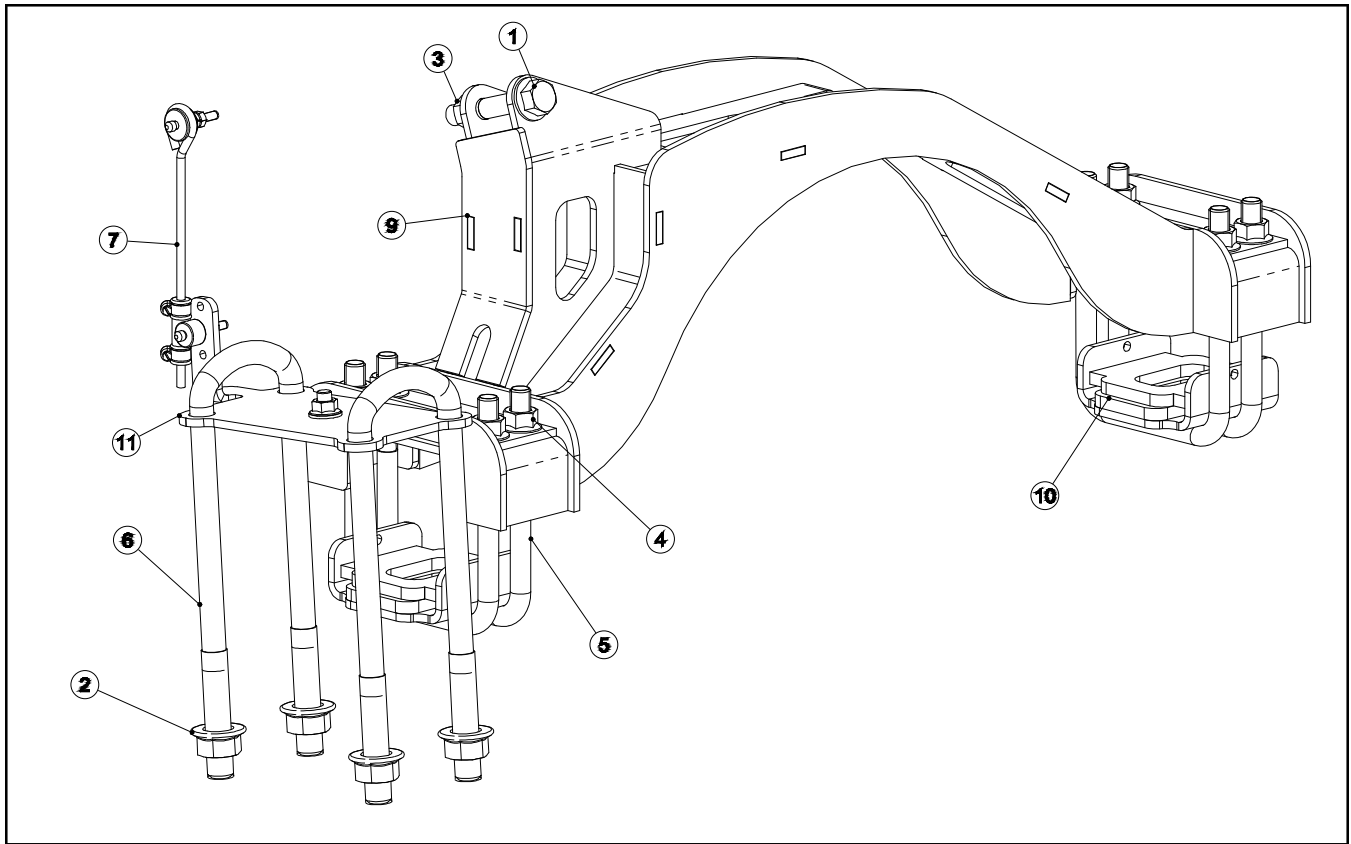
ASSEMBLY

1. Place supplied 800M0167 Lower Lateral Control Rod Bracket on top of axle.
 2. Place supplied 800M0168 Axle Mount Channels on bottom side of axle. These Channels will also act as a guide for lateral location of the Spring Arms.
 3. Fasten these components to axle **loosely** using new 5/8 UNF U-bolts and Nuts supplied with this kit.
 4. Loosely Re-attach Driver end of Lateral Control rod, using new 5/8 UNC fasteners provided in this kit. Torque to specifications called out in table below.
 5. **Before any fasteners are tightened to specification, assure vehicle is set to approximate ride height, and axle is centered between frame rails.**
 6. **With Axle centered, and vehicle set to approximate ride height,** Torque (4) 5/8 UNF U-Bolts gradually in a criss-cross pattern, to assure even clamping. Torque values are given in the Torque Table Below.
 7. Torque the 5/8 UNC Lateral Control Rod Fasteners to specifications called out in table below.
 8. Place the new Upper Axle Plate on top of the axle and OE Axle shim. Keep the axle shim in the same orientation as previous installation.
 9. Re-Secure the Spring Arm to the Axle with new 20mm U-Bolts and Nuts provided with This kit. Torque 20mm nuts in a criss-cross pattern to assure even clamping.
 10. Install new adjustable valve linkage that is supplied in this kit by fastening as shown in Fig. 2. Ride height can be adjusted by loosening the clamps on lower rubber barrel and sliding the barrel on the rod. Lengthening the linkage will raise ride height, shortening it will decrease the ride height. Be sure to re-tighten clamps on lower barrel.
 11. Adjust ride height at Airspring to **11.1 inches** as explained in Owner's Manual.
- Re-torque applicable fasteners**
 - Any Torque Specs not called out can be found in the UltraRide Owner's Manual.**



TORQUE TABLE

LOCATION	FASTENER	TORQUE
5/8 UNF LATERAL CONTROL BRACKET U-BOLTS	5/8 UNF HIGH NUTS	150 FT-LBS
5/8 UNC LATERAL CONTROL ROD MOUNT BOLTS	5/8 UNC FLANGE NUTS	160 FT-LBS
SPRING ARM AXLE U-BOLTS	M20 FLANGE NUTS	275 FT-LBS



PARTS LIST

ITEM	PART NUMBER	DESCRIPTION	QTY
1	141A-2028	5/8 X 3 1/2 UNC FLANGE BOLT (GR 8) O&P	1
2	1480-2002	HEX TOP LOCK FLANGE NUT, M20 X 2.5, CLASS10	4
3	1480-2004	5/8 UNC TOP LOCK FL NUT (GR G) O&P	1
4	1480-2005	5/8 UNF TOP LOCK FL NUT (GR G) O&P	8
5	14950029	U-BOLT-SQUARE, 5/8 UNF, 5.06 X 7.00	4
6	14950038	U-BOLT, M20 X 2.50, 79 X 315	2
7	15000315	LINKAGE-VALVE, HEIGHT CONTROL, HALDEX	1
8	80001750	MANUAL-INSTALLATION, V9-F47-WA1 SERVICE KIT	1
9	800M0167	BRACKET-MOUNT, LCR	1
10	800M0168	CHANNEL-MOUNT, AXLE	2
11	800M0169	PLATE-MOUNT, AXLE	1