



PROCEDURE TO REMEDY WIRING DEFECT

1. Locate the ABS modulator valves for both the front and rear axles.
2. The two (2) front valves (Bendix Model M-30 or M-32) are visible behind the cab deck grill opening at the front of the truck. They are mounted just under the front frame cross member. Locate and remove the three (3) wire connectors on the main wiring harness from each of the valves. This connector may only be removed by releasing the locking latch on the connector. This is done by lifting the latch bar to open the lock and pulling on the connector at the same time. A small screwdriver may be used for ease in opening the latch bar. Install the Modulator Valve Jumper harness connector by inserting it into the connector on the modulator valve body and firmly pressing until the connector stops and latches. Install the original wiring harness connector into the other end of the modulator valve jumper harness connector, pressing firmly until the connector stops and latches.
(please see installation information- Sheet 1, attached)

CAUTION: ENSURE THAT THE WIRING HARNESS CONNECTOR THAT WAS REMOVED FROM THE VALVE IS INSTALLED IN ITS ORIGINAL VALVE POSITION

Example: Left front wiring harness must be attached to modulator valve jumper harness attached to left front modulator valve.

3. The two (2) rear valves (Bendix Model M-30 or M-32) are located under the rear frame cross member and are only visible from beneath the truck. Locate and install the modulator valve jumper harnesses procedure as for the front. (please see installation information, Sheet 2, attached)

CAUTION: ENSURE THAT WIRING HARNESS CONNECTOR THAT WAS REMOVED FROM THE VALVE IS INSTALLED IN ITS ORIGINAL VALVE POSITION

4. Check the ABS system for faults using the procedure outlined in the Bendix ABS Service Manual.



CONFIRMATION OF REPAIR

Location of Unit Being Repaired:

Company _____
Street _____
City _____
State _____
Zip _____

User:

Company _____
Street _____
City _____
State _____
Zip _____

Ottawa Serial Number _____

VIN _____

Date Repair Performed _____

On the above date, I, _____ (name) performed the repairs on the above listed serial number in accordance with the Ottawa Truck letter dated July 28, 2006, regarding ABS wiring. I tested the unit upon completion of the repair for proper operation.

Signed: _____

Print Name: _____

B/M NO:

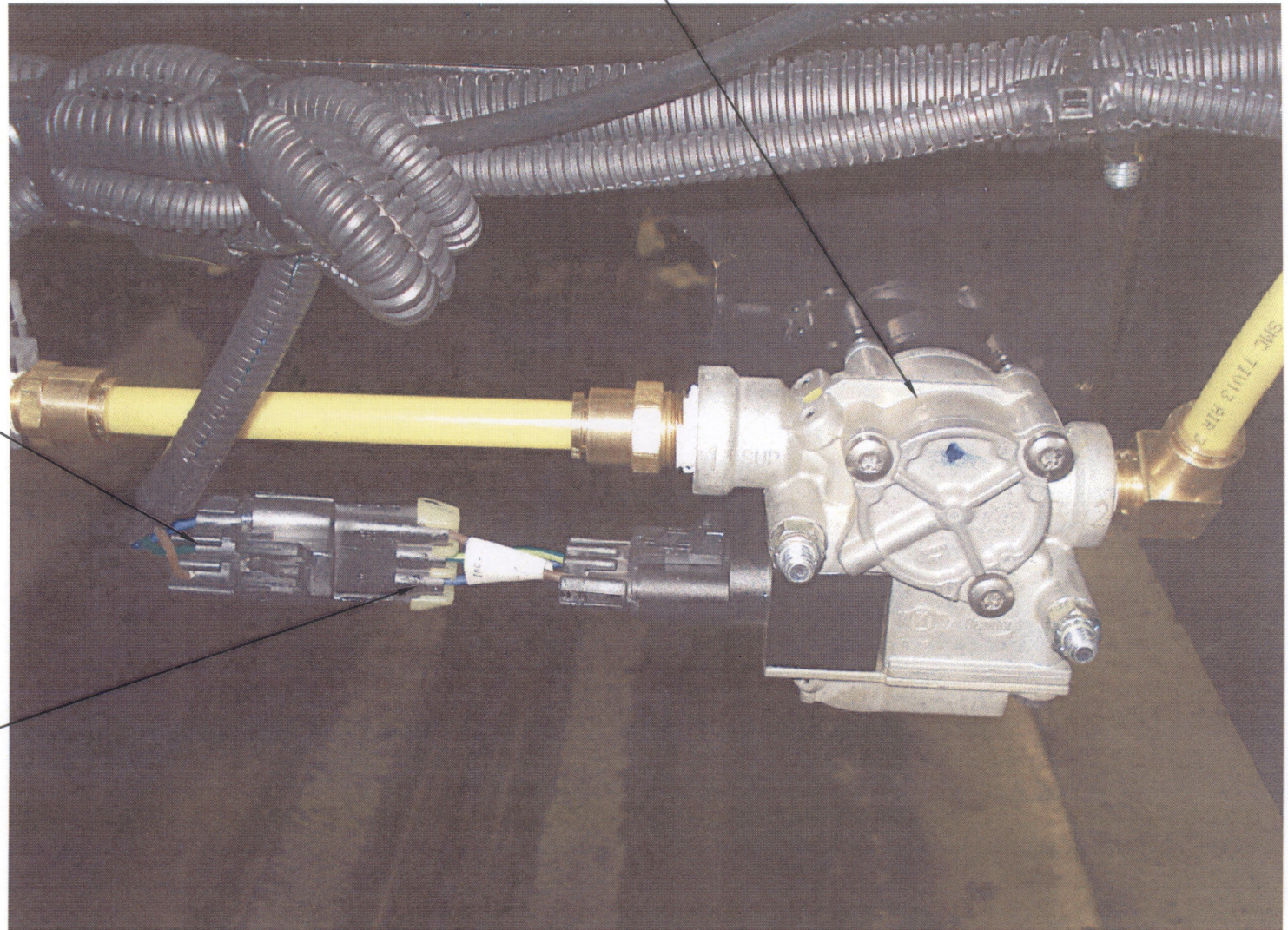
ERO NO:

A 061031 7-27-06

NO:

PSK00368

RIGHT FRONT MODULATOR VALVE SHOWN



EXISTING ABS CHASSIS HARNESS

INSTALL MODULATOR VALVE JUMPER HARNESS 53562728 BETWEEN ABS CHASSIS HARNESS AND EACH MODULATOR VALVE

FRONT OF TRUCK LOOKING REARWARD

DESCRIPTION

ABS MODULATOR VALVE JUMPER HARNESS INSTL



	BY	DATE
DRAWN	LRH	7-27-06
CHECKED	GJL	7-31-06
APPROVED		

S/O NO:

NO:

PSK00368

SHEET 1 OF 2

Printed: 2006-08-18 08:36:40

B/M NO:

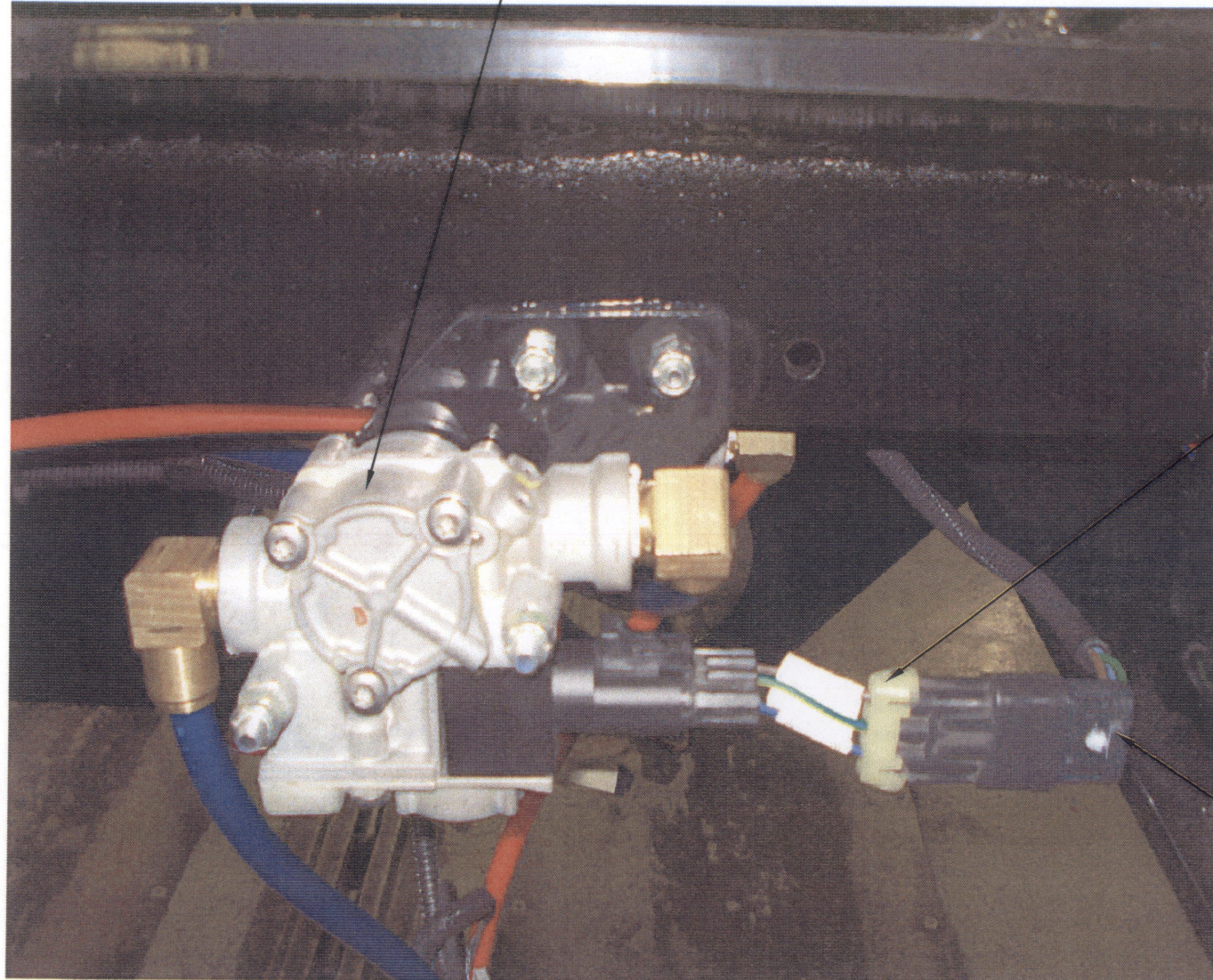
ERO NO:

A 061031 7-27-06

NO:

PSK00368

LEFT REAR MODULATOR VALVE SHOWN



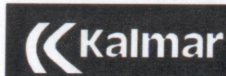
INSTALL MODULATOR VALVE JUMPER HARNESS 53562728 BETWEEN ABS CHASSIS HARNESS AND EACH MODULATOR VALVE

EXISTING ABS CHASSIS HARNESS

REAR OF TRUCK LOOKING REARWARD

DESCRIPTION

ABS MODULATOR VALVE JUMPER HARNESS INSTL



	BY	DATE
DRAWN	LRH	7-27-06
CHECKED	GJL	7-31-06
APPROVED		

S/O NO:

NO:

PSK00368

SHEET 2 OF 2

Printed: 2006-08-18 08:36:40