

Richard Jung / TMS Customer Services Division
July 25, 2006
Approved By: David Zellers

To: All Toyota Dealers
From: Toyota Customer Services

RECEIVED
JUL 25 2006
P 2:55
CUSTOMER SERVICES DIVISION

Special Service Campaign (SSC) 60D
Certain Early 2007 Model Year FJ Cruiser Vehicles Equipped With Bridgestone Dueler H/T
P265/70R17 or Dunlop Grandtrek AT20 P265/70R17 Tires
*******REMINDER*******

Please forward this message to your Service and Parts Managers.

SSC 60D on certain early 2007 model year FJ Cruiser vehicles entails the replacement of the factory equipped tires due to damage caused during the tire-to-wheel mounting process during vehicle production.

The confirmation of the DOT Serial Number is to assure the tires being replaced are the ones installed at the factory. **All vehicles involved in SSC 60D require all five tires (including the spare tire) to be replaced. You do not need to inspect the tires for damage. Simply replace all five tires.**

If your dealership requires further clarification on the repair procedures, please refer to TIS for the Technical Instructions. You may also contact your Region/Private Distributor Representative or call the TAS Hotline.

Thank you for your cooperation.

TOYOTA MOTOR SALES, U.S.A., INC.

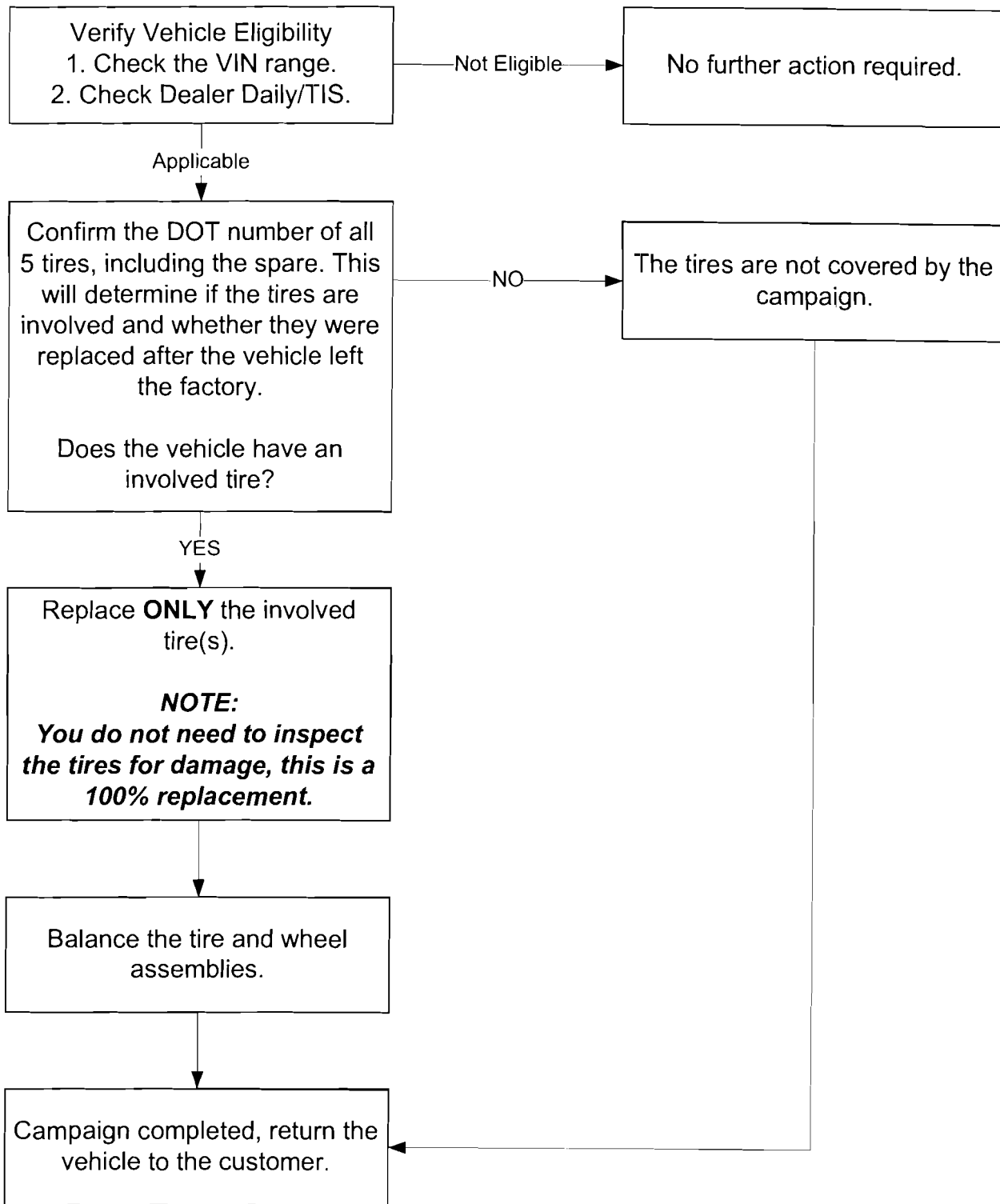
TECHNICAL INSTRUCTIONS

FOR

SPECIAL SERVICE CAMPAIGN 60D

**EARLY 2007 MODEL YEAR FJ CRUISER VEHICLES EQUIPPED WITH
BRIDGESTONE DUELER H/T P265/70R17 OR
DUNLOP GRANDTREK AT20 P265/70R17 TIRES**

I. OPERATION FLOW CHART



II. IDENTIFICATION OF AFFECTED VEHICLES

A. AFFECTED VIN RANGE

Model	Year	WMI	VIN Range	
			VDS	Ranges
FJ Cruiser	2007	JTE	BU11F	0001029 – 0011264
			ZU11F	0001017 – 0002528

NOTE:

Not all vehicles in the VIN range are affected. As always, consult Dealer Daily/TIS to confirm VIN eligibility and to assure the SSC is applicable. This will verify the vehicle is affected and has not already been completed prior to dealer shipment or by another dealer. TMS warranty will not reimburse dealers for repairs conducted on vehicles that are not affected or were completed by another dealer.

III. PREPARATION

A. PARTS

Part Number	Part Description	Quantity
N/A	Bridgestone Dueler H/T P265/70R17 113S	1 to 5*
N/A	Dunlop Grandtrek AT20 P265/70R17 113S	1 to 5*

NOTE:

* The number of tires needed will be determined after verification of the DOT Serial Number.

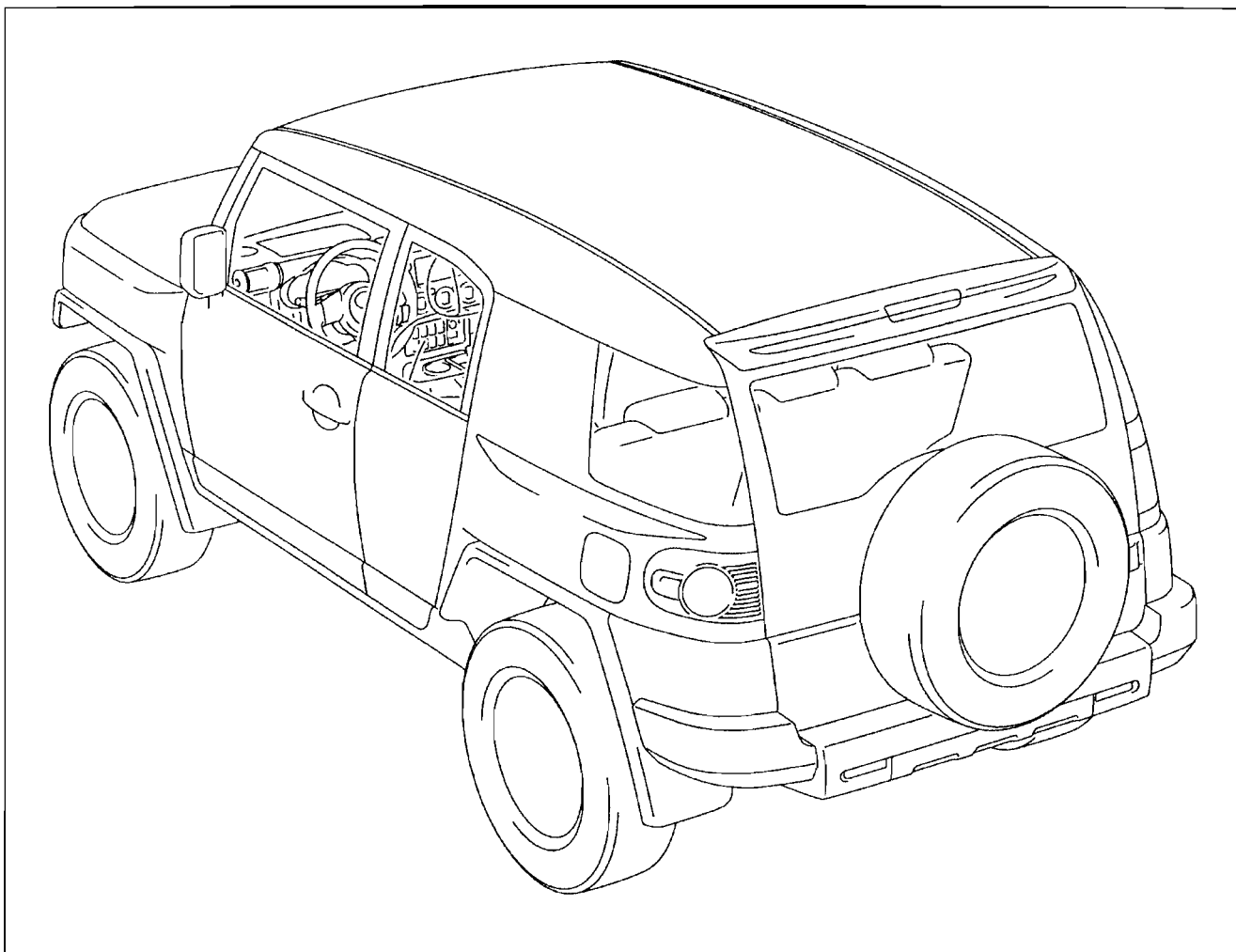
B. TOOLS

- Standard hand tools
- Torque wrench
- Tire pressure gauge and inflator
- Valve core tool
- Drill
- Drill Bit

C. EQUIPMENT

- Tire changer machine
- Wheel balancer machine

IV. COMPONENTS

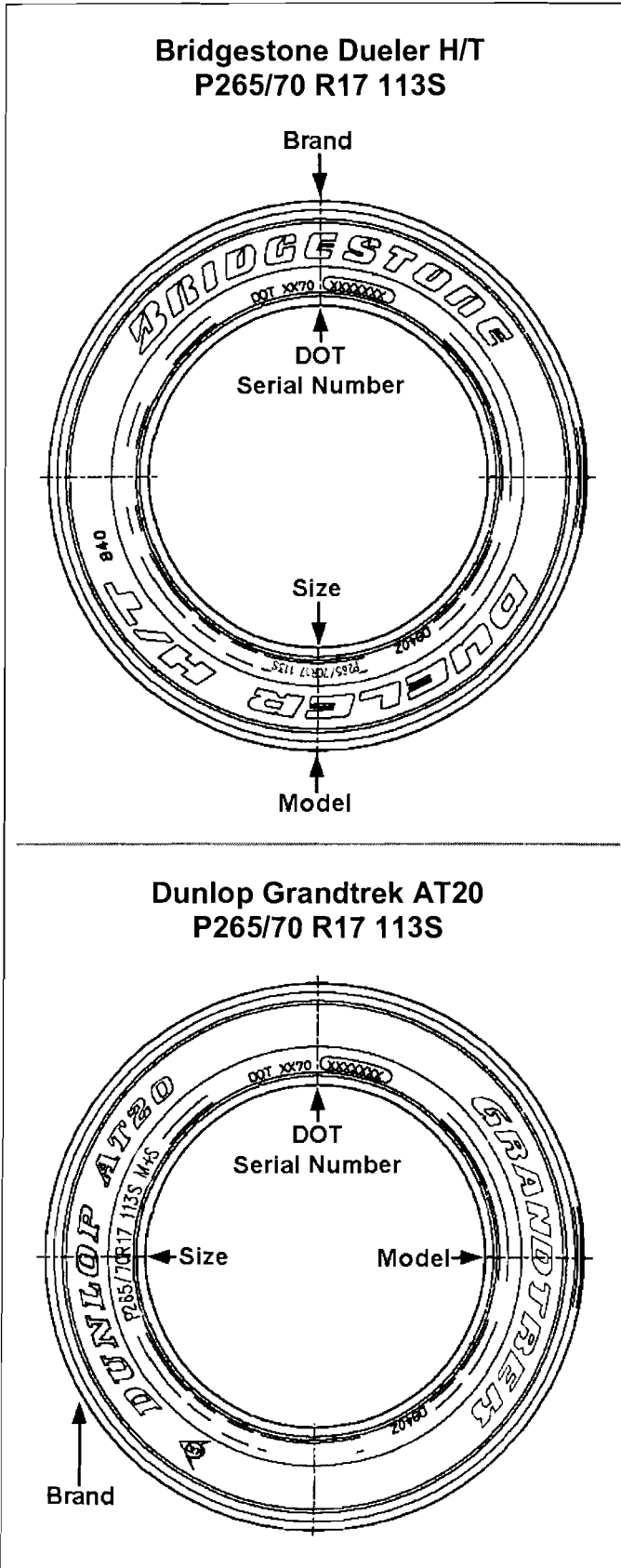


V. BACKGROUND

During the tire to wheel assembly process for the 2007 FJ Cruiser equipped with either Bridgestone Dueler H/T P265/70R17 113S or Dunlop Grandtrek AT20 P265/70R17 113S tires, there is a possibility that the inner bead of the tire may have been damaged. If the bead is damaged, a bulge may develop on the sidewall of the tire and/or air may leak from the area of the damaged bead.

VI. WORK PROCEDURE

A. DETERMINE IF THE TIRES ARE INVOLVED



1. CONFIRM IF THE TIRES ARE INVOLVED

- a) Confirm the following on all 5 tires, including the spare, to determine if they are involved.

Involved Bridgestone Tires:

- **Model:** Dueler H/T
- **Size:** P265/70R17 113S
- **DOT Serial #:** EM70 JAF ****

Involved Dunlop Tires:

- **Model:** Grandtrek AT20
- **Size:** P265/70R17 113S
- **DOT Serial #:** EU70 2MAR ****

NOTE:

(*) represents any combination of numbers or letters.

- b) Are the tire(s) involved?

YES:

- The tire(s) must be replaced.
- Proceed to step "B. TIRE REMOVAL AND INSTALLATION" on the next page.

NO:

- The tire(s) does not need to be replaced.
- If **ALL** 5 tires are **NOT** involved, no further action is required. Return the vehicle to the customer.

B. TIRE REMOVAL AND INSTALLATION

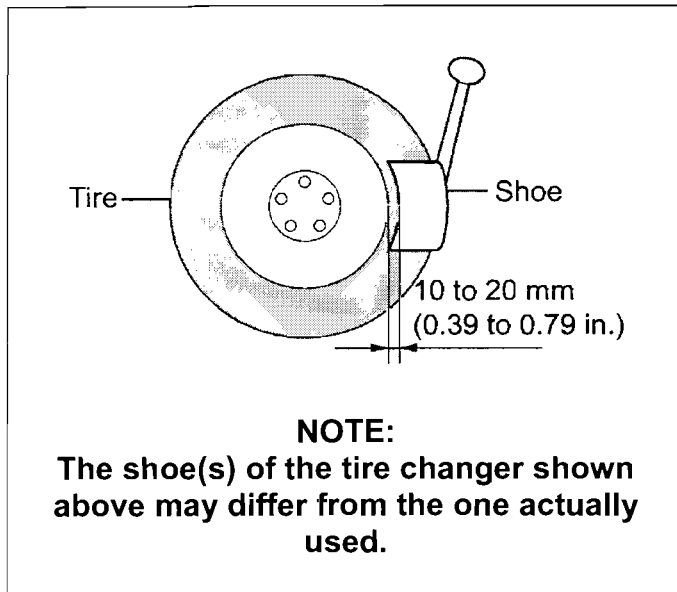


NOTE:

- WHEN REPLACING TIRES, REPLACE ONLY WITH THE SAME BRAND, MODEL, AND SIZE TIRES THAT THE VEHICLE WAS ORIGINALLY EQUIPPED WITH.
- DO NOT INSTALL BRIDGESTONE TIRES ON A VEHICLE ORIGINALLY EQUIPPED WITH DUNLOP TIRES.
- DO NOT INSTALL DUNLOP TIRES ON A VEHICLE ORIGINALLY EQUIPPED WITH BRIDGESTONE TIRES.

1. REMOVE ONLY THE INVOLVED TIRE(S) FROM THE VEHICLE

- a) Remove **ONLY** the involved tire(s) from the vehicle and mark their original installation position on the back of each wheel (L/F, R/F, L/R, R/R, S for spare).



2. REMOVE THE TIRE FROM THE WHEEL

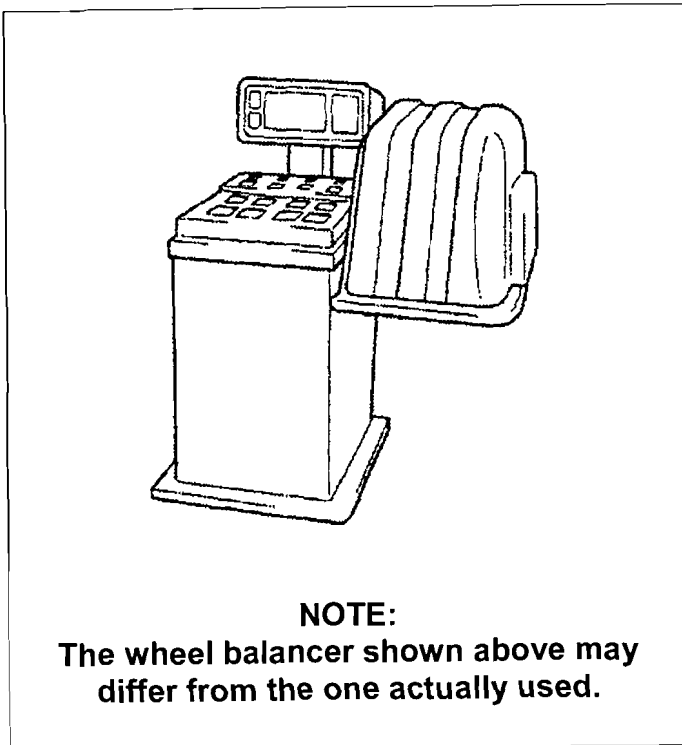
- a) Remove the wheel weights.
- b) Remove and discard the cap and valve core from the valve stem to release the air from the tire.
- c) Separate the tire beads from the wheel using the shoe(s) of the tire changer.
- d) Dismount the outer bead from the wheel.
- e) Dismount the inner bead from the wheel and remove the tire.
- f) Remove and discard the valve stem

3. INSTALL THE NEW TIRE(S)

- a) Install a **NEW** valve stem.
- b) Mount the inner tire bead.
- c) Mount the outer tire bead.
- d) Inflate the tire to seat the beads, and adjust the tire pressure to the recommended cold specification.

**Tire Pressure Specification:
220 KPa (2.2 kgf/cm², 32 psi)**

- e) Install the valve stem cap.



4. BALANCE THE TIRE AND WHEEL ASSEMBLY

- a) Perform off-the-car wheel balancing on all tire and wheel assemblies, and install **NEW** wheel weights as needed.

5. REINSTALL ALL TIRE AND WHEEL ASSEMBLIES TO THE VEHICLE

- a) Reinstall all tire and wheel assemblies back into the appropriate installation position, and torque the front and rear wheels to specification.

**Torque Specification:
113 N·m (1,152 kgf·cm, 85 ft·lbf)**

VII. USED TIRE DISPOSAL INSTRUCTIONS

Used tires are considered hazardous waste that must be disposed of in the proper manner according to local, state, and federal regulations for hazmat waste.

As required by Federal Regulations, please make sure all recalled parts (original parts) removed from the vehicle are disposed of in a manner in which they will not be reused.

For all used tires removed from the involved vehicle, drill a 1" hole in the sidewall.