

MODEL: 2006 NINJA® ZX-14 (ZX1400A6F/L)
TITLE: VEHICLE DOWN SENSOR BOLTS

RECEIVED
2006 JUN 26 A 9:10

Page 1 of 4

RECALL

THIS BULLETIN IS OF THE HIGHEST PRIORITY AND MUST BE ACTED UPON IMMEDIATELY TO ENSURE CUSTOMER SAFETY.

Eligibility

Eligible Units

Model	Vehicle Identification Number Range
ZX1400A6F/L	JKBZXNA1✓6A000073 thru 005969

Please check VSI (Vehicle Service Inquiry) in K-Dealer for other possible repair campaigns for eligible units.

Kawasaki will repair some units prior to your receiving them. Check eligibility using VSI and the physical repair verification prior to starting the repair. See Repair Verification section for details.

Subject

On some eligible units, the bolts holding the Vehicle Down Sensor may not have been tightened sufficiently during vehicle assembly. If the bolts loosen and the Vehicle Down Sensor comes out of its bracket, 1) the engine may stop during vehicle operation, creating the potential for a crash resulting in injury or death; or 2) it is possible for the engine to continue running if the vehicle has fallen down, creating the potential for injury or further vehicle damage.

Kawasaki Action

Initiate Campaign:

Kawasaki has initiated a Recall campaign to repair all eligible units. The repair consists of tightening the Vehicle Down Sensor mounting bolts to the proper torque.

Notify Registered Owners:

Kawasaki is sending a Recall letter to all registered owners of eligible units. A copy of the letter is printed on the last page of this bulletin.

Dealer Action

Repair Eligible Units:

Repair all eligible units including sold units in the field and unsold units in your dealership inventory prior to delivery to the retail purchaser. It is the obligation of authorized Kawasaki retail Dealers to repair eligible units in Dealer's possession prior to retail sale. Failure to comply with this obligation to repair all units eligible for Recall or FDM campaigns by the Dealer constitutes a breach of the Dealer Sales and Service Agreement. Refer to Service Policies bulletin SP 05-01. Refer to the Repair Procedure section of the bulletin for details.

IMPORTANT NOTE:

- o *It's the law! Under the U.S. National Highway Traffic Safety Administration (NHTSA), Federal Law 49 U.S.C. Section 30120(i) requires dealers to perform Recall repairs before delivering any vehicle affected by the Recall to a purchaser.*

Document Completed Repairs:

Federal law requires manufacturers to maintain accurate follow-up records on repairs performed on eligible units. Dealers MUST submit a Warranty Claim for each repair. Refer to the Warranty Information section of this bulletin for details.

NOTE:

- o *If you fail to submit a Warranty Claim for a new unit that is subsequently sold and registered, the new owner will receive the Recall letter requesting the return of the vehicle to you for repair.*

File behind the "MC" tab in your Kawasaki
"Service and Warranty" binder

©2006, Kawasaki Motors Corp., U.S.A.

THE
LEADING
EDGE OF

Kawasaki
Let the good times roll.™

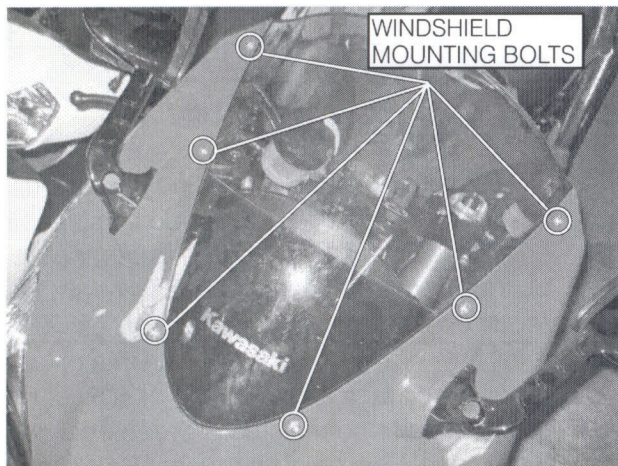
/ POWER / PERFORMANCE / EXHILARATION /

Submit Product Registration:

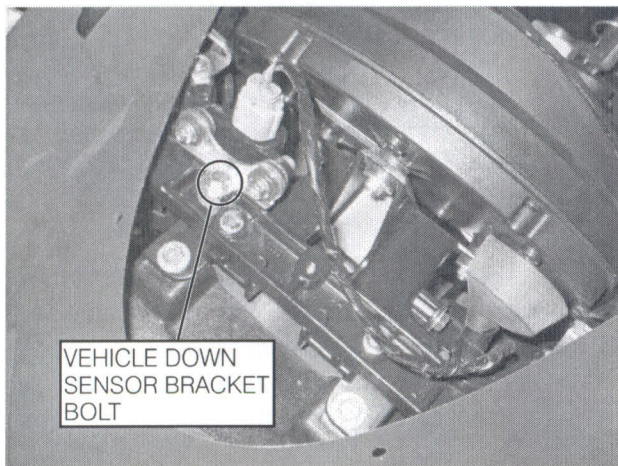
Submit the product registration to Kawasaki immediately after retail sale of any eligible unit. Be sure to supply the correct customer name and address. Kawasaki uses the product registration information for customer notification. Also, if you know that the customer has moved, please submit a Customer Update to the Warranty Department.

Repair Procedure

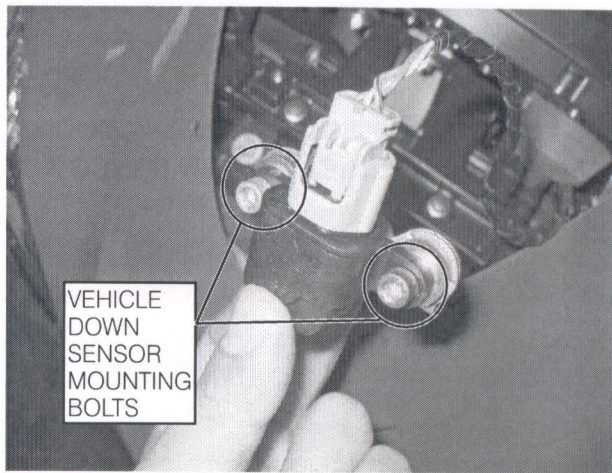
- Loosen the windshield mounting bolts and remove the windshield.



- Loosen the Vehicle Down Sensor bracket bolt and remove the bracket, with the Sensor attached, from its mount.



- Tighten the Vehicle Down Sensor mounting bolts to the proper torque.



- Reinstall the Vehicle Down Sensor bracket and tighten the bolt to the proper torque.
- Install the windshield and tighten the bolts to the proper torque.

Torque

Item	Torque
Windshield Bolt	0.42 N-m (0.04 kgf-m, 4 in-lb)
Vehicle Down Sensor Bracket Bolt	5.9-7.8 N-m (0.60-0.80 kgf-m, 53-58 in-lb)
Vehicle Down Sensor Mounting Bolt	5.9 N-m (0.60 kgf-m, 53 in-lb)

Warranty Information

This is a safety Recall campaign. Repair is authorized regardless of ownership or warranty status. Repairs **MUST BE PERFORMED IMMEDIATELY ON ALL ELIGIBLE UNITS** in the field and during initial assembly and preparation. See the Warranty Policies and Procedures Manual (claim type 3 information) for detailed instructions when submitting the Warranty Claim.

WARRANTY INFORMATION

Claim Type	3
Job Code	22187
Time	0.3 hr.
Qty	0
Part Number	92153-1597
Description	Bolt

Repair Verification

Check VSI in K-Dealer and the physical repair verification mark for vehicle eligibility.

Units Repaired by Kawasaki:

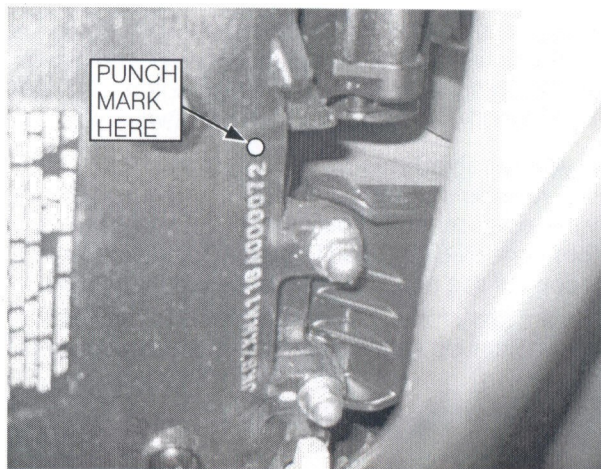
Units repaired by Kawasaki prior to you receiving them have a punch mark after the VIN as shown, and VSI will show them as repaired.

Units Repaired by your Dealership:

After repair, make a small punch mark after the VIN as shown.

NOTE:

- o *Repair verification is an essential part of the repair procedure. Along with the physical repair verification mark, check VSI (Vehicle Service Inquiry) in K-Dealer for other possible repair campaigns for eligible units*



NINJA® ZX-14 VEHICLE DOWN SENSOR BOLT WARNING AND RECALL NOTICE

Dear Kawasaki Ninja ZX-14 Owner:

This notice has been sent to you in accordance with requirements of the National Traffic and Motor Vehicle Safety Act.

The reason for this notice:

Kawasaki Motors Corp., U.S.A. has decided that a defect which relates to motor vehicle safety exists in 2006 ZX-14 (ZX1400A6F/L) models. On eligible units, under certain circumstances the bolts holding the Vehicle Down Sensor may come loose and allow the sensor to fall out of its mounting bracket. If the bolts loosen and the Vehicle Down Sensor comes out of its bracket, 1) the engine may stop during vehicle operation, creating the potential for a crash resulting in injury or death; or 2) it is possible for the engine to continue running if the vehicle has fallen down, creating the potential for injury or further vehicle damage. Our records indicate that you have bought one of these units.

What Kawasaki and your dealer will do:

Your Kawasaki dealer will correct this problem for you at no charge. The correction will consist of tightening the Vehicle Down Sensor mounting bolts to the proper torque. The actual repair will take up to one hour but may take longer due to scheduling at the dealership.

What you must to do to ensure your safety:

It is important that your Kawasaki dealer completes this repair in order to properly torque the Vehicle Down Sensor mounting bolts. Loose bolts could result in the hazard described above.

Before taking your motorcycle to the dealership, inspect the Vehicle Down Sensor to be sure it is correctly in place. Remove the windshield. Inspect the Vehicle Down Sensor and its mounting bolts to be sure that they are in place as shown in the enclosed instructions. If they are not in place, **DO NOT RIDE YOUR MOTORCYCLE** until your dealer has performed the necessary repair.

CAUTION: Only perform this inspection if you are confident in your mechanical abilities. If you are unsure how to perform this inspection, **DO NOT RIDE YOUR MOTORCYCLE** until your dealer has performed the necessary repair. Please call your authorized Kawasaki motorcycle dealer to schedule an appointment and take this letter with you at the time of your appointment.

If you need help:

If you have questions or concerns that your dealer is not able to resolve, or you experienced the failure described above prior to receiving this letter and paid to have it corrected, please Contact Kawasaki's Consumer Services Department:

Kawasaki Motors Corp., U.S.A.

ATTN: Consumer Services Department

P.O. Box 25252

Santa Ana, California 92799-5252

(866) 802-9381 (toll-free) between 8:30 a.m. and 4:45 p.m. PT Monday through Friday.

If your dealer fails or is unable to remedy this defect without charge within a reasonable amount of time (60 days after you first attempt to obtain remedy), you may submit a written complaint to the Administrator, National Highway Traffic Safety Administration, Washington, D.C. 20590, or call the toll free Auto Safety Hotline at (888) 327-4236 (TTY: 1-800-424-9153); or go to <http://www.safercar.gov>.

If you received this notice in error:

Our records indicate you are the current owner of the Ninja ZX-14 described in this letter. If you no longer have the vehicle described in this letter, or if it has been repaired, please help us to update our records by calling Kawasaki toll free at (866) 802-9381. Federal regulation requires that any vehicle lessor receiving this recall notice must forward a copy of this notice to the lessee within ten days.

We are sorry for any inconvenience this may cause, but we have taken this action in the interest of your safety and your continued satisfaction with your Kawasaki motorcycle.

Sincerely,

Kawasaki Motors Corp., U.S.A.

LETTER INSERT:

NINJA® ZX-14 VEHICLE DOWN SENSOR BOLT RECALL
Vehicle Down Sensor Inspection Procedure

- Loosen the windshield mounting bolts and remove the windshield.
- Verify that the Vehicle Down Sensor and its mounting bolts are in their proper position.
- If they are not in place, **DO NOT RIDE YOUR MOTORCYCLE** until your dealer has performed the necessary repair.

