



Publication Number: ID0175067

Publication Date: November 2006

Revision Date: December 2006

Safety Notice

<p>Affected Models</p>	<p>T12S trailers with the following serial numbers:</p> <p>1DSB122CK61702201 1DSB122C861702204 1DSB122CX61702205 1DSB122C161702206 1DSB122C361702207 1DSB122C461702202 1DSB122C661702203 1DSB122C1517Z2651 1DSB122C3517Z2652 1DSB122C9417Y2609 1DSB122C7417Y2608 1DSB122C5417Y2607 1DSB122C3417Y2606 1DSB122C1417Y2605 1DSB122CX417Y2604 1DSB122C8417Y2603 1DSB122C6417Y2602 1DSB122C4417Y2601 1DSB122CX317X4257 1DSB122C1317X4258 1DSB122C6317X4255 1DSB122C8317X4256 1DSB122C2317X4253 1DSB122C4317X4254 1DSB122C9317X4251 1DSB122C0317X4252</p>
<p>Attention</p>	<p>Owners, Managers, Parts and Service Managers</p>
<p>Description</p>	<p>Please see the attached customer notice regarding modifications to the T12S trailer to comply with the National Traffic and Motor Vehicle Safety Act.</p>
<p>Parts Required</p>	<p>Rear impact guard kit (p/n 345-0385)</p>
<p>Estimated Repair Time</p>	<p>2 hours</p>
<p>Compensation</p>	<p>parts, labor and mileage</p>
<p>Dealership Notes</p>	<p>A notification will be mailed to owners of affected models in two weeks. A list of units in your area is included. Please note the "What You Should Do" section of the attached customer copy. If you have any questions, contact the Trenchless Product Support Group.</p>

Safety Notice

Recall Code 06V-065

This notice is being sent to you in accordance with the requirements of the National Traffic and Motor Vehicle Safety Act.

To: *Owners of Vacuum Systems with Ditch Witch Model T12S Trailers*

The Charles Machine Works, Inc., manufacturer of Ditch Witch trailers has decided that certain Ditch Witch model T12S trailers fail to conform to Federal Motor Vehicle Safety Standard No. 223, "Rear Impact Guards."

Description of Non-conformity – The vacuum system extends too far back over the end of the trailer.

Potential Hazard – Occupants of a vehicle that collides with the rear of the trailer may be killed or seriously injured.

What You Should Do – Contact a Ditch Witch dealership to have a rear impact guard installed, the filter canister moved, and have additional reflective tape installed free of charge.

If you are a lessor of Ditch Witch model T12S trailers with vacuum systems, Federal law requires that any vehicle lessor receiving this recall notice must forward a copy of this notice to the lessee within ten days.

What The Charles Machine Works, Inc. Will Do – This work will be performed free of charge by your nearest Ditch Witch dealership. Estimated repair time is ½ day per trailer.

If You Have Incurred Trailer Repair Expenses Before You Received This Letter - The Charles Machine Works, Inc. will reimburse you if you have costs associated with the installation of a DOT rear impact guard, installation of reflective tape, or moving the filter canister and you have not been reimbursed for those costs. The amount includes parts, limited to The Charles Machine Works, Inc.'s list retail price, plus the labor at local rates, taxes, or disposal of wastes. Claims must be submitted to the Ditch Witch dealership or to The Charles Machine Works, Inc., Attention - Product Support, Trenchless Group, P.O. Box 66, Perry, OK 73077.

Reimbursement will be by check or cash from The Charles Machine Works, Inc. This plan is available to the public upon request. The Charles Machine Works, Inc. will act upon any claim within 60 days of its receipt. Disputes over the denial in whole or in part of a claim for reimbursement shall be resolved between you and The Charles Machine Works, Inc.

You may submit a complaint to the Administrator, National Highway Traffic Safety Administration, 400 Seventh Street, S.W., Washington, D.C. 20590 or call the toll free Vehicle Safety Hotline at 1-888-327-4236 (TTY: 1-800-424-9153); or go to <http://www.safercar.gov>, if you believe that The Charles Machine Works, Inc. or your Ditch Witch dealership has failed or is unable to remedy the defect or noncompliance without charge and within a reasonable time.



**Ditch
Witch**

Publication Number: ID0175369

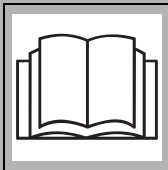
Publication Date: November 2006

INSTALLATION INSTRUCTIONS

Rear Impact Guard	
T12S Trailer	
Kit Number: 345-0385	Estimated Installation Time: 2 hours

Before You Start

Read instructions thoroughly. Check to see if all parts in bill of materials are in kit. If parts are missing or do not match bill of materials, contact Trenchless Product Support.



⚠ WARNING Incorrect procedures could result in death, injury, or property damage.
Use equipment correctly.

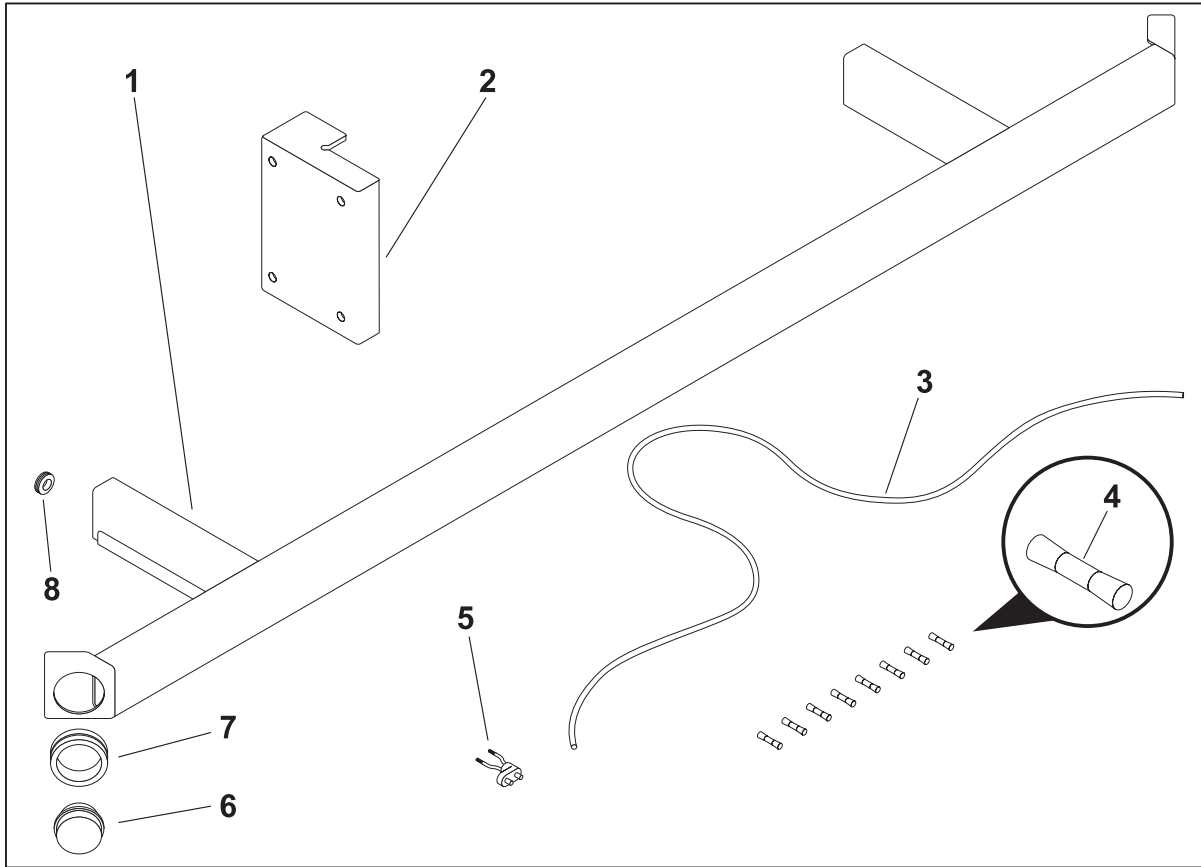
NOTICES:

- Empty tank.
- Park on level area.
- Turn off engine and remove key from ignition.
- Block the wheels.
- Use hoists and other load bearing devices designed to hold weight of equipment.

Purpose of Kit

This kit contains the parts and instructions necessary to install a rear impact guard and relocate the filter canister on the T12S trailer.

Overview



a26in001a.eps

Ref.	P/N	Description	Qty.
1	345-0354	rear impact guard	1
2	300-2427	filter mount bracket	1
3	215-1088	wire (16 ga 2 wire primary)	60'
4	215-1090	butt connector (16-14 ga) w/heat shrink	8
5	215-631	plug	2

Ref.	P/N	Description	Qty.
6	217-001	red light	2
7	217-003	grommet	2
8	116-918	grommet	2
n/a	274-352	hi-vis stripe	

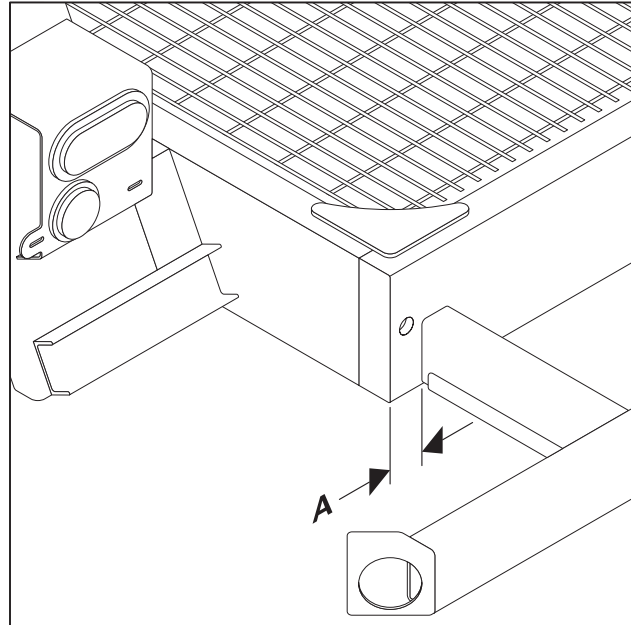
Rear Impact Guard

Install Rear Impact Guard

Ensure that trailer light harness is disconnected from pulling vehicle.

Position Guard

1. Mark trailer in the general position where guard will be installed:
 - Flush with the bottom of the trailer
 - 3" (76 mm) from side of trailer (A)
2. To prepare trailer for welding, use an abrasive disc or abrasive cleaner to remove paint.
3. Use blocks and shims to make a level surface for fitting up the guard.
4. Check that guard is level with trailer both from left to right and from fore to aft.



a26in002a.eps

NOTICE: Welding can damage electronics.

- Disconnect battery at battery disconnect switch before welding to prevent damage to battery. Do not turn off battery disconnect switch with engine running or alternator and other electronic devices may be damaged.
- Connect welder ground clamp close to welding point and make sure no electronic components are in the ground path.
- Always disconnect the ECU ground connection from the frame, harness connections to the ECU, and other electronic components prior to welding on machine or attachments.

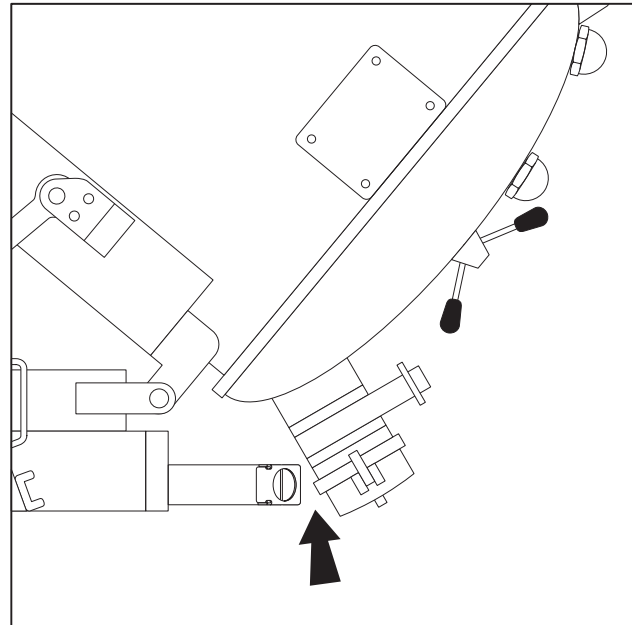
5. Tack weld guard into place. Re-check position of guard. Re-check level.

Test

1. Ensure that tank is empty. Turn battery disconnect switch to the on position and start unit.
2. Fully tilt tank.

NOTICE: Do not unlatch door with tank tilted up.

3. Check clearance between drain valve and impact guard as shown:
 - If valve clears guard, proceed with installation.
 - If valve does not clear guard, adjust position of guard. (Refer to measurement on page 3, step 1).
4. Return tank to horizontal position.
5. Stop unit and turn battery disconnect switch to the off position.



a26in004a.eps

Weld Guard

1. Use a 3/8" (10 mm) fillet weld on the top, left and right side of each mounting tube to secure guard to trailer. Finish with a 3/8" (10 mm) butt weld on the bottom.

NOTICE:

- Stick weld using a 7018 rod (tensile 70 KSI); **or**
- MIG weld using wire equivalent to 7018, such as AWS class (ER70S-6).

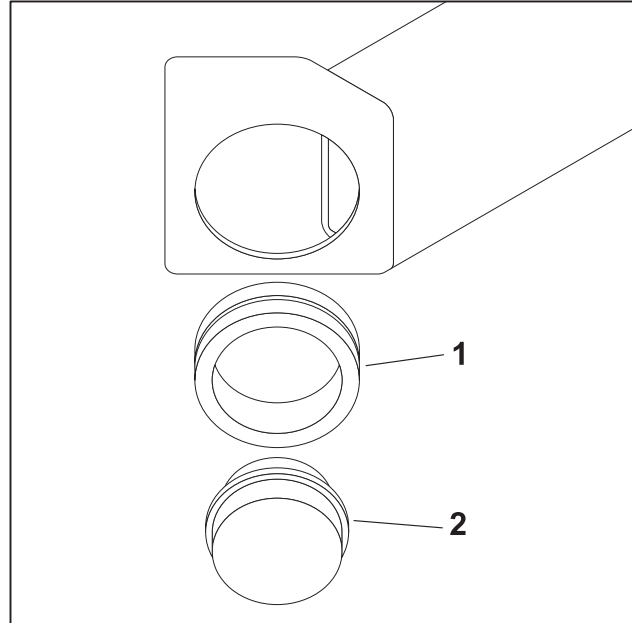
2. Allow welds to cool, then inspect and repair if necessary.
3. Clean welded area of slag and contamination. Paint to prevent rusting.

Rear Impact Guard

Install Marker Lights

IMPORTANT: Use steps 1-8 to install lights on the left side of the trailer and the right side of the trailer.

1. Install red light (2) and grommet (1) on impact guard.

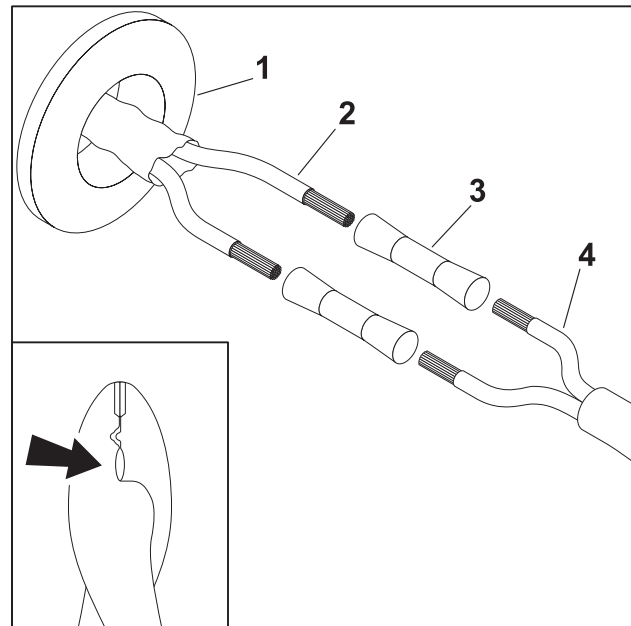


a23in011a.eps

2. Install small rubber grommet (1) in the existing hole in the end of the trailer.
3. Cut extension wire (4) in half and prepare ends for splicing.

Note: Each half should measure approximately 30" (76 cm.) Use one half for each side of the trailer.

4. Use heat shrink connectors (3) to splice extension wire (4) to trailer harness (2):
 - Tie extension wire into the wiring for the rear clearance light located on the fender below the brake light.
 - Match wires WHT to WHT and BLK to BLK. Insert wires into connector and crimp.



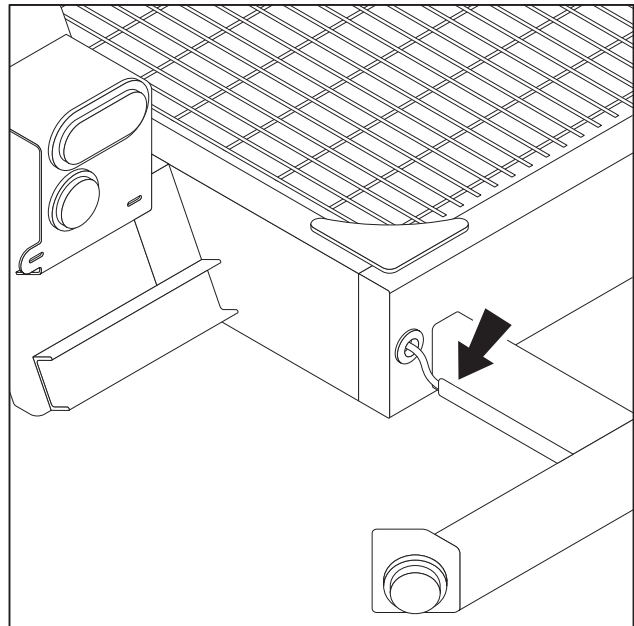
a23in006a.eps

NOTICE: To prevent damage to heat shrink tape, use smooth opening in pliers (shown) to crimp connectors.

- Apply heat to seal heat shrink connectors.

- Route wire through channel (shown). Use a rubber mallet to bend tracks up to protect wire.

NOTICE: Ensure that wire does not become pinched or kinked in the channel.



a26in003a.eps

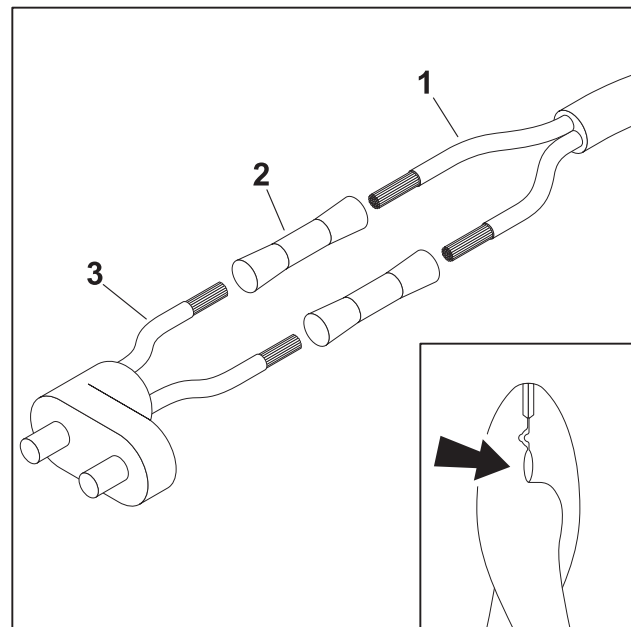
- Use heat shrink connectors (2) to splice opposite end of extension wire (1) to plug (3).

- Match wires WHT to WHT and BLK to BLK. Insert wires into connector and crimp.

NOTICE: To prevent damage to heat shrink tape, use smooth opening in pliers (shown) to crimp connectors.

- Apply heat to seal heat shrink connectors.

- Connect plug to red light.
- Connect trailer harness to vehicle and test lights for proper operation. Ensure that the brake lights, clearance lights, and impact guard lights work properly.



a23in007a.eps

Rear Impact Guard

Modify Filter Canister Bracket



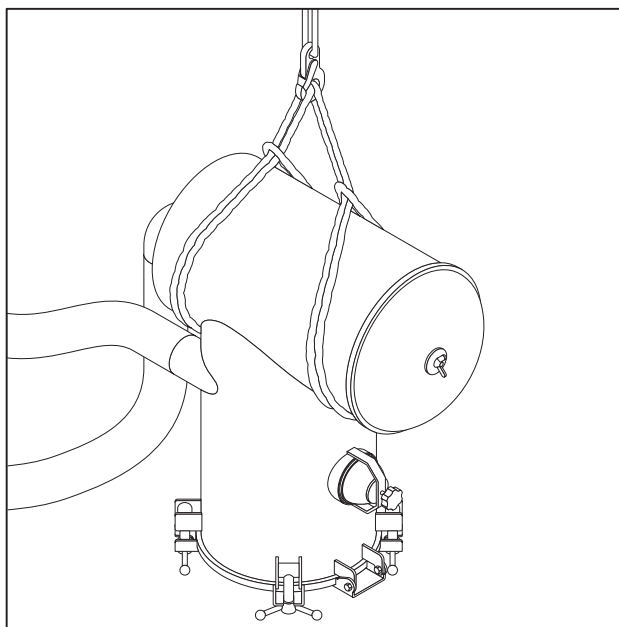
sf1014

WARNING Crushing weight could cause death or serious injury. Use proper procedures and equipment or stay away.

1. Use a hoist with two slings to support filter canister, as shown.

Note: Filter canister weighs 200-300 lb (91-136 kg).

2. Remove four bolts from canister bracket. Save hardware for reuse.
3. Move filter canister away from working area. (It is not necessary to disconnect any hoses or fittings.)

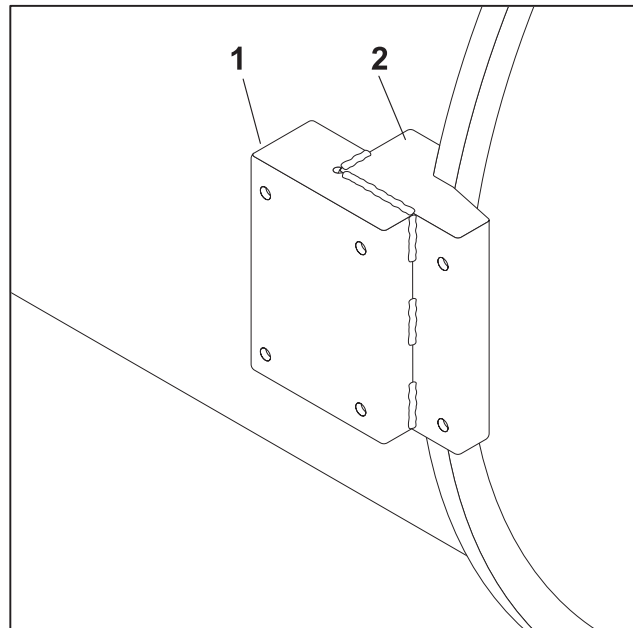


a23in009a.eps

NOTICE: Welding can damage electronics.

- Disconnect battery at battery disconnect switch before welding to prevent damage to battery. Do not turn off battery disconnect switch with engine running or alternator and other electronic devices may be damaged.
- Connect welder ground clamp close to welding point and make sure no electronic components are in the ground path.
- Always disconnect the ECU ground connection from the frame, harness connections to the ECU, and other electronic components prior to welding on machine or attachments.

4. Mark bracket in general area where new bracket will be installed. Use an abrasive disc or abrasive cleaner to remove paint from weld area.
5. Position new bracket (1) as shown. Ensure that the top of the new bracket (1) is flush with the top of the original bracket (2). Clamp or tack weld into place.
6. Secure new bracket on top and left side with 1/4" (6 mm) fillet welds at 2" (51 mm) intervals (shown.)
7. Allow welds to cool, then inspect and repair if necessary.
8. Clean welded area of slag and contamination. Paint to prevent rusting.
9. Move filter canister into position and secure to new bracket using original hardware.

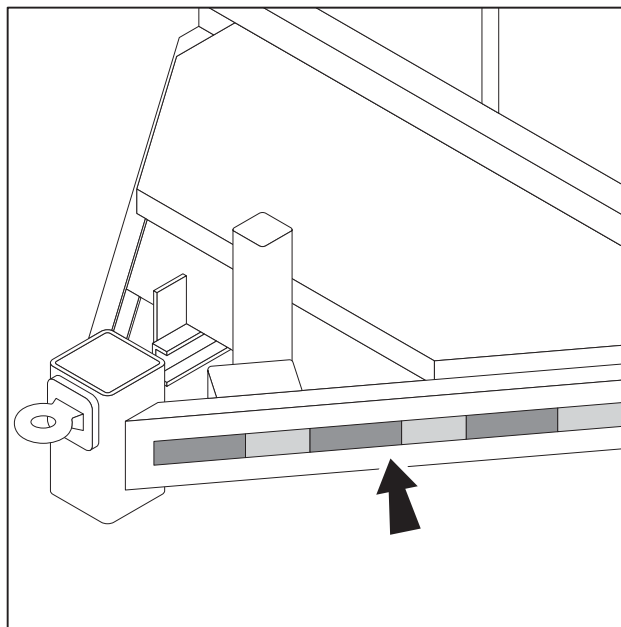


a23in010a.eps

Rear Impact Guard

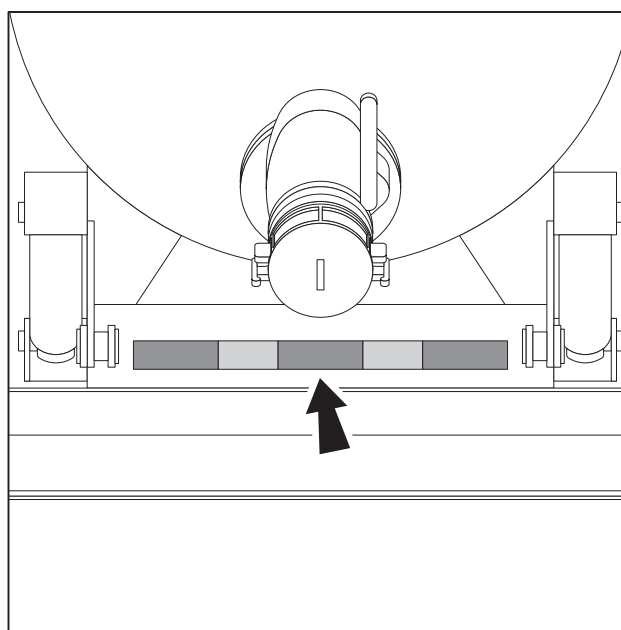
Install Reflective Tape

1. Install reflective tape on each side of trailer tongue as shown.



a23in012a.eps

2. Install reflective tape below rear of tank as shown.



a23in013a.eps