

## **IMPORTANT RECALL NOTICE**

[RECALL 161B: TIRE AND LOADING INFORMATION LABEL  
SAMPLE OWNER NOTIFICATION LETTER  
UNITED STATES]

December 2006

Dear Volvo Owner:

This notice is sent to you in accordance with the requirements of the National Traffic and Motor Vehicle Safety Act.

***The reason for this campaign:***

Volvo has decided that certain model year 2005-2006 S60, S80 and V70 fail to comply with the requirements of Federal Motor Vehicle Safety Standard No. 110, "Tire Selection and Rims." It has come to our attention that information on the tire pressure labels is incorrect. A misprinted label could lead to improper vehicle loading specifications or tire inflation which could result in a tire failure, increasing the risk of a crash.

We are sending you the enclosed label with the correct information to apply it using the instructions on the next page, or your authorized Volvo retailer can affix the label for you at no charge.

**Please Note: The Tire Inflation Pressure Tables listed in the "Wheels and Tires" section of your owner's manual does contain the correct tire pressure information**

***Please contact:***

If you have any questions, please contact your Volvo retailer. If your retailer is unable to answer your questions, please contact Volvo Customer Care Center at 7 Volvo Drive, Rockleigh, NJ 07647 or phone 1-800-458-1552, Monday through Friday, 8:30 A.M. to 7:00 P.M. Eastern Time. You may also e-mail us at [customercare@volvoforlife.com](mailto:customercare@volvoforlife.com).

We have advised the National Highway Traffic Safety Administration (NHTSA) that we are conducting this recall. If you are unable to have this procedure performed without charge and within a reasonable period of time, you may contact the NHTSA Administrator (National Highway Traffic Safety Administration), 400 Seventh Street, SW., Washington, DC 20590 or call

the toll-free Vehicle Safety Hotline at 1-888-327-4236 (TTY: 1-800-424-9153) or go to <http://www.safercar.gov>.

Federal law requires that any vehicle lessor receiving this recall notice must forward a copy of this notice to the lessee within ten days. Lessor means a person or entity that is the owner, as reflected on the vehicle title, of any five or more leased vehicles.

Your safety and continued satisfaction with your Volvo and the Volvo organization are very important to us. We apologize for any inconvenience this may cause and we appreciate your cooperation in arranging to have this important service completed as quickly as possible.

Sincerely,

Eunice Stern  
Manager, Customer Care

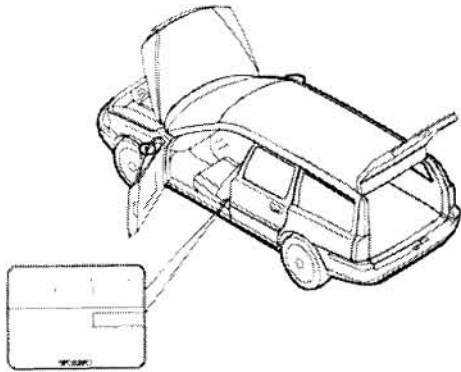
***Please note:*** According to Insurance Institute for Highway Safety President Brian O'Neill, "It is very important that owners of vehicles in which safety-related problems have been identified take those vehicles back to dealerships as soon as they receive notice of a recall or service campaign. Such notices should not be ignored or taken lightly. There is just no reason to drive around in a vehicle with a safety-related defect."

# Instructions for Application of Tire Pressure Label

1.

## General

**Note!** The illustrations may contain some discrepancies, but the essential information is always correct.



IMG-243383

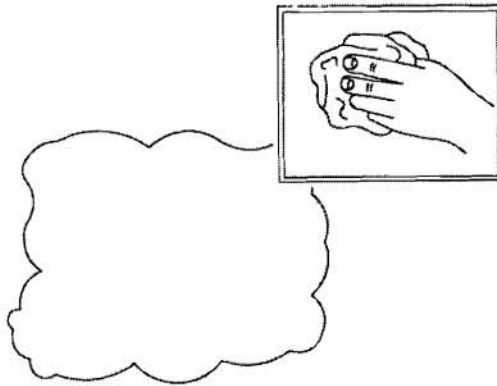
The tire pressure label is found on the inside of the vehicle's B-pillar.  
**There are two labels found in this location. The tire pressure label is the upper label on the B-pillar.**

2.

## Cleaning the tire pressure label

Clean the existing tire pressure label with windshield washer fluid mixed with water, and a cloth.

Wipe clean and dry using a lint free cloth.



IMG-243388

3.

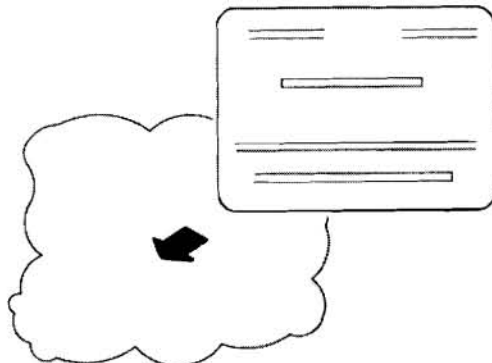
## Affixing the tire pressure label

Remove the protective paper from the tire pressure label.

Align and place the tire pressure label over the existing one.

Press along the tire pressure label with your thumb to remove any air bubbles. Start from the middle and press outwards.

**Note!** Make sure that this area of the vehicle is not washed in the next 48 hours.



IMG-243389