

Safety Defect and Noncompliance Report Guide for Vehicles
PART 573 Defect and Noncompliance Report⁽¹⁾

SEP 27 A 9 27

On September 21, 2006, Mid Bus, Inc. decided that a noncompliance with Federal Motor Vehicle Safety Standard No. 222 exists in the motor vehicles listed below, and is furnishing notification to the National Highway Traffic Safety Administration in accordance with 49 CFR Part 573 Defect and Noncompliance Reports.

Date this report was prepared: September 18, 2006

Furnish the manufacturer's identification code for this recall (if applicable):

Will use NHTSA's assigned code

1. Identify the full corporate name of the fabricating manufacturer of the vehicle being recalled. If the recalled vehicle is imported, provide the name and mailing address of the designated agent as prescribed by 49 U.S.C. §30164.

Mid Bus, Inc.

505 East Jefferson Street

Bluffton, Ohio 45817-1398

Identify the corporate official, by name and title, whom the agency should contact with respect to this recall. Donald Line Engineering Manager

Telephone Number: _ Fax No.: 419-358-1398 419-358-2400

Name and Title of Person who prepared this report. Donald Line Eng. Mgr.

Signed:

Donald E. Line 9/21/06

I. Identify the Vehicle Models Involved in the Recall

2. Identify the Vehicles Involved in the Recall, for each make and model or applicable vehicle line (provide illustrations or photographs as necessary to describe the vehicle), provide:

Make(s): Model Years Involved: Model(s): See attached list "A" of MidBus Guides
Model Year 2002 thru 2006

Production Dates: Beginning: January 1, 2002 **Ending:** May 16, 2006

Vehicle Type: Bodystyle: School Bus

Descriptive information which characterizes/distinguishes the recalled vehicles from those model vehicles not included in the recall:

Vehicles with GVWR less than 10,001 lbs built after January 2002 with Collins 3 passenger bus seats.

Make(s): Model Years Involved: Model(s): See attached list "B" of Midbus Guide
Model Year 2002 thru 2006

Production Dates: Beginning: January 1, 2002 **Ending:** May 16, 2006

Vehicle Type: Bodystyle: School Bus /MFSAB

Descriptive information which characterizes/distinguishes the recalled vehicles from those model vehicles not included in the recall:

Vehicles with GVWR less than 10,001 lbs built after January 2002 with Freedman seats

Make(s): Model Years Involved: Model(s): See attached list "C" of MidBus Guide
Model Year 2002 thru 2006

Production Dates: Beginning: January 1, 2002 **Ending:** May 16, 2006

Vehicle Type: Bodystyle: School Bus / MFSAB

Descriptive information which characterizes/distinguishes the recalled vehicles from those model vehicles not included in the recall:

Vehicles under GVWR of 10,001 lbs with track seating manufactured after Jan. 2002

Identify the approximate percentage of the production of all the recalled models manufactured by your company between the inclusive dates of manufacture provided above, that the recalled model population represents. For example, if the recall involved Widgets equipped with certain items of equipment from January 1, 1996 through April 1, 1997, then what was the percentage of the recalled Widgets of all Widgets manufactured during that time period.

School buses in the recall is estimated at 3% of total production.

II. Identify the Recall Population

3. Furnish the total number of vehicles recalled potentially containing the defect or noncompliance.

Number of Vehicles

Model Year Potentially Involved

2001- 4
2002- 95
2003- 38
2004- 34
2005- 14
2006- 15

Total Number Potentially Affected by the Recall: 200

4. Furnish the approximate percentage of the total number of vehicles estimated to actually contain the defect or noncompliance:

All vehicles included in the target population are thought to contain the non compliance.

Identify and describe how the recall population was determined--in particular how the recalled models were selected and the basis for the beginning and final dates of manufacture of the recalled vehicles:

Selected units were picked from production logs covering the times these items have been in production.

III. Describe the Defect or Noncompliance

5. Describe the defect or noncompliance. The description should address the nature and physical location of the defect or noncompliance. Illustrations should be provided as appropriate.

Seats being fixed in this recall may not meet the 222 anchorage test loads in our lab.

Describe the cause(s) of the defect or noncompliance condition.

Incorrect hardware was installed.

Describe the consequence(s) of the defect or noncompliance condition.

Seat anchorages may not meet the 222 loads required

Identify any warning which can (a) precede or (b) occur.

N/A

If the defect or noncompliance is in a component or assembly purchased from a supplier, identify the supplier by corporate name and address.

N/A

Identify the name and title of the chief executive officer or knowledgeable representative of the supplier:

N/A

IV. Provide the Chronology in Determining the Defect/Noncompliance

If the recall is for a defect, complete item 6, otherwise item 7.

6. With respect to a defect, furnish a chronological summary (including dates) of all the principle events that were the basis for the determination of the defect. The summary should include, but not be limited to, the number of reports, accidents, injuries, fatalities, and warranty claims.

Mid Bus has been running a series of product proving test this summer and uncovered the hardware issues involved. Secondary testing has been undertaken to confirm the first results. In test data meetings it was concluded that the recall of these buses should be undertaken.

7. With respect to a noncompliance, identify and provide the test results or other data (in chronological order and including dates) on which the noncompliance was determined.

Mid Bus has been running a series of product proving test in May thru August and uncovered the hardware issues involved. Secondary testing has been undertaken to confirm the first results and were available in early September.

V. Identify the Remedy

8. Furnish a description of the manufacturer's remedy for the defect or noncompliance. Clearly describe the differences between the recall condition and the remedy.

Hardware in the field units will be replaced or added per the attached photo's and instructions.

Identify and describe how and when the recall condition was corrected in production. If the production remedy was identical to the recall remedy in the field, so state. If the product was discontinued, so state.

Production starting May 16, 2006 were produced identical to the recall remedy in the field.

VI. Identify the Recall Schedule

Furnish a schedule or agenda (with specific dates) for notification to other manufacturers, dealers/retailers, and purchasers. Please, identify any foreseeable problems with implementing the recall.

Customer notification will begin in October of 2006. All customers will be notified by mail and replacement hardware sent to them. They will be instructed how to inspect & replace the hardware or how to contact their Mid Bus Dealer for service.

VII. Furnish Recall Communications

9. Furnish a final copy of all notices, bulletins, and other communications that relate directly to the defect or noncompliance and which are sent to more than one manufacturer, distributor, or purchaser. This includes all communications (including both original and follow-up) concerning this recall from the time your company determines the defect or noncompliance condition on, not just the initial notification. *A DRAFT copy of the notification documents should be submitted to this office by Fax (202-366-7882) for review prior to mailing.*

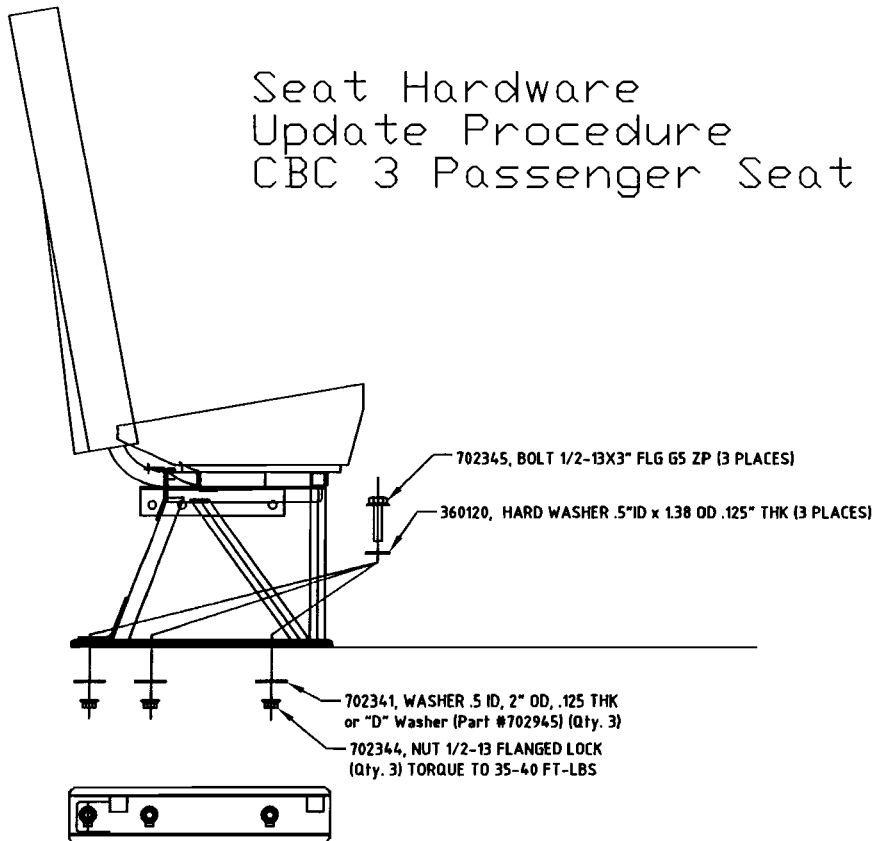
Copies of all pertinent documents are attached for review.

Hardware Replace Instructions:

- Step #1.** Remove existing Hardware that fastens Seat leg to Floor (Reference Photo "A")
- Step #2.** Add Midbus supplied Hardware (Reference Drawing Lower LH) replacing Fasteners that were removed in Step #1.
- Step #3.** Torque bolts to 35-40 ft.lb.
- Step #4.** Ensure that Hardware, after Rework, matches photo A1.

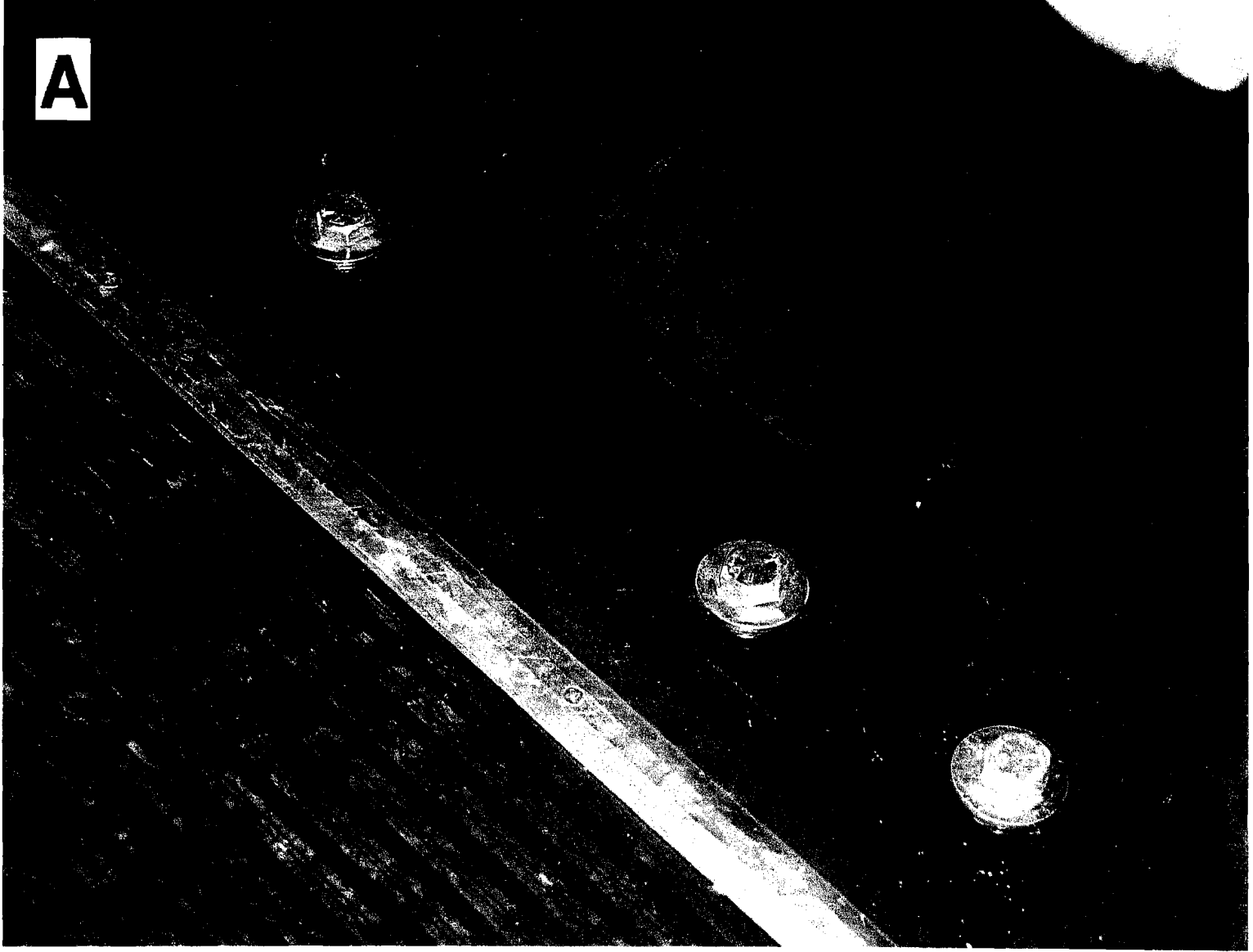
Note: Mid Bus has added three (3) "D" washers (Shape Reference= $\text{\textcircled{D}}$). Use in instances where Seat Bolt is too close to Underbody component and a full flat washer will not draw flush to Body Floor.

Seat Hardware
Update Procedure
CBC 3 Passenger Seat



Install "A"

A



"A"

702980 Service Kit Seat Hdw. Collins

Indented Bill of Material

	User	Required	Drawing number	From	To	Qty per
702980 Service Kit Seat Hdw. Collins		1.000	IN702980			
360120 1/2x1 3/8 Flat Washer		3.000	D360722 REV.161	08/18/2006		3.000
702341 Washer 1/2 Id X 2 Od X 1/8 Th		3.000	A360722 REV 167	08/18/2006		3.000
702344 Spin Locknut Hex Hd 1/2-13		3.000	D360722	08/18/2006		3.000
702345 Flange Bolt 1/2-13 X 3" Gr 5		3.000	D360722 REV 167	08/18/2006		3.000
702945 Washer "D" Profile		3.000	B702945	08/18/2006		3.000



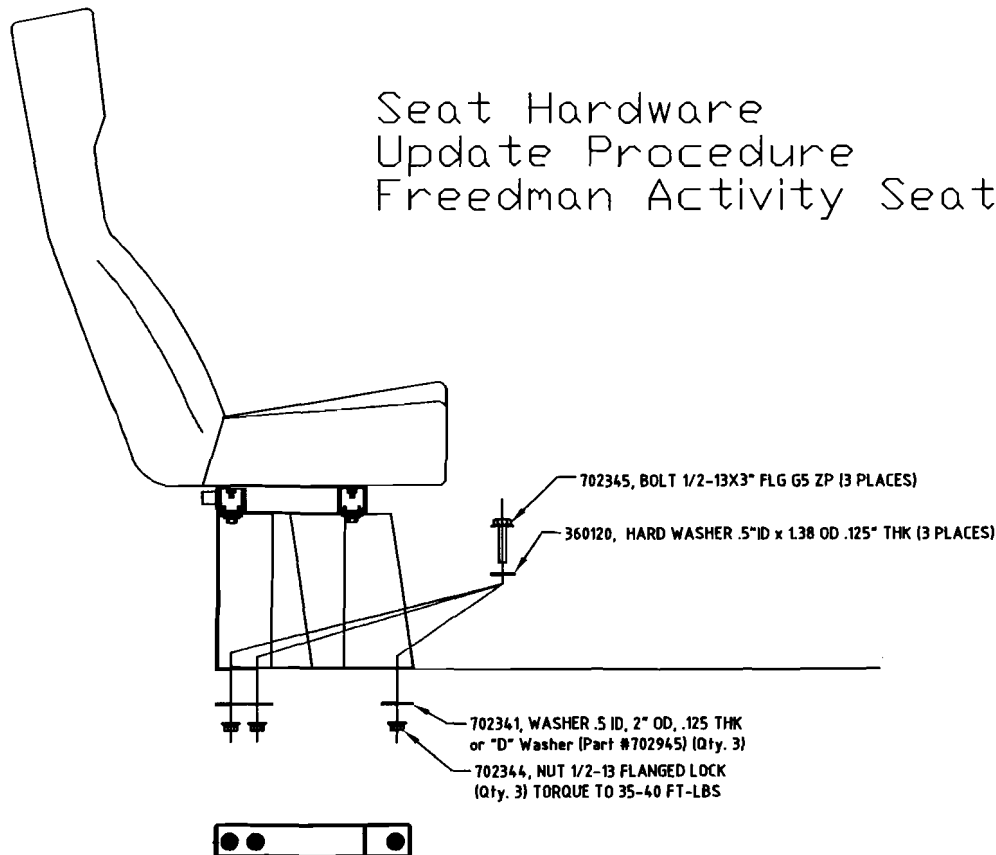
Hardware Replace Instructions:

- Step #1.** Remove existing Hardware that fastens Seat leg to Floor (Reference Photo "C")
- Step #2.** Add Midbus supplied Hardware (Reference Drawing Lower LH) replacing Fasteners that were removed in Step #1.---If only Two sets of Hardware existed in the Seat Leg before Step #1, a third hole will need to be Drilled through the Floor to Allow the Third set of Hardware to be installed.
- Step #3.** Torque bolts to 35-40 ft.lb.

Note A: In cases where obstructions (ie: Wheelhouse, Heater etc..) prevent access to seat hardware, the entire seat may need to be removed to complete Step #2. Please note on recall card when such instances occur.

Note B: Mid Bus has added three (3) "D" washers (Shape Reference= $\text{\textcircled{D}}$). Use in instances where Seat Bolt is too close to Underbody component and a full flat washer will not draw flush to Body Floor.

Seat Hardware Update Procedure Freedman Activity Seat

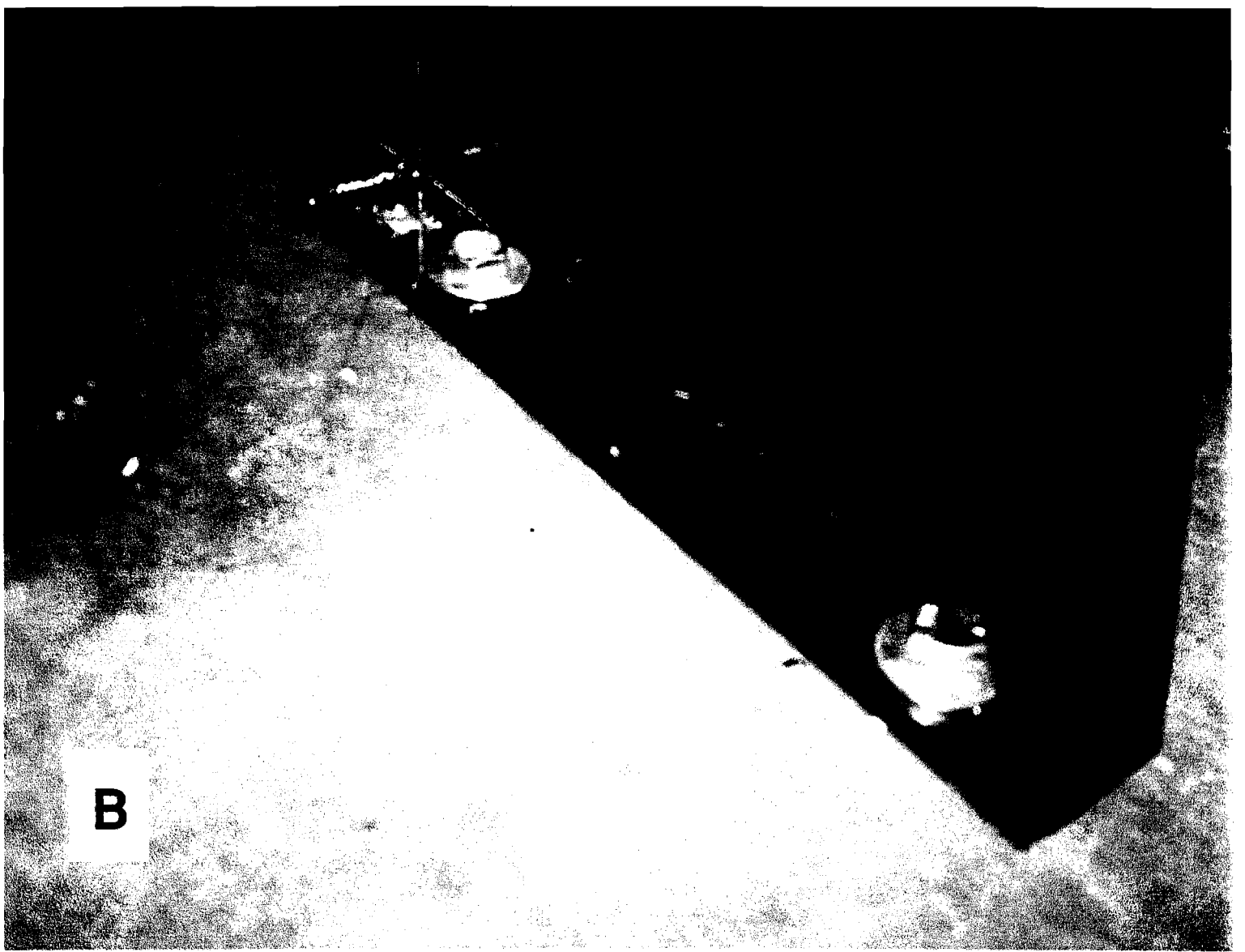


Install "B"

B^a

702982 Service Kit Seat Hdw. Freedman

Indented Bill of Material		User	Required	Drawing number	From	To	Qty per
702982	Service Kit Seat Hdw. Freedman		1.000	IN702982			
1	360120 1/2x1 3/8 Flat Washer		3.000	D360722 REV.161	08/18/2006		3.000
1	702341 Washer 1/2 Id X 2 Od X 1/8 Th		3.000	A360722 REV 167	08/18/2006		3.000
1	702344 Spin Locknut Hex Hd 1/2-13		3.000	D360722	08/18/2006		3.000
1	702345 Flange Bolt 1/2-13 X 3" Gr 5		3.000	D360722 REV 167	08/18/2006		3.000
1	702945 Washer "D" Profile		3.000	B702945	08/18/2006		3.000



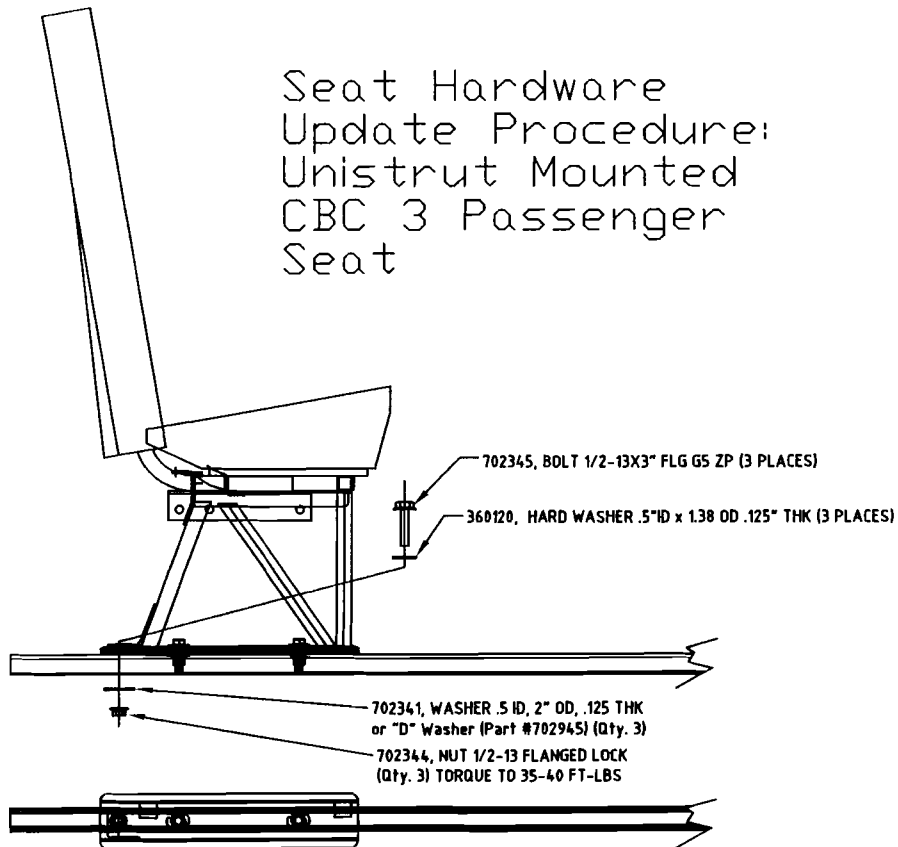


Hardware Replace Instructions:

- Step #1.** Remove Rearmost Bolt & Track Nut that fastens Seat leg to Floor Track. (Reference Photo "C")
- Step #2.** Add Midbus supplied Hardware (Reference Drawing Lower LH) replacing Fastener that was removed in Step #1 by Drilling through Track & Floor Structure and Securing with Nut & Washer from Under Body Floor.
- Step #3.** Torque bolt to 35-40 ft.lb.

Note: Mid Bus has added one (1) "D" washers (Shape Reference=⊕). Use in instances where Seat Bolt is to close to Underbody component and a full flat washer will not draw flush to Body Floor.

Seat Hardware Update Procedure: Unistrut Mounted CBC 3 Passenger Seat

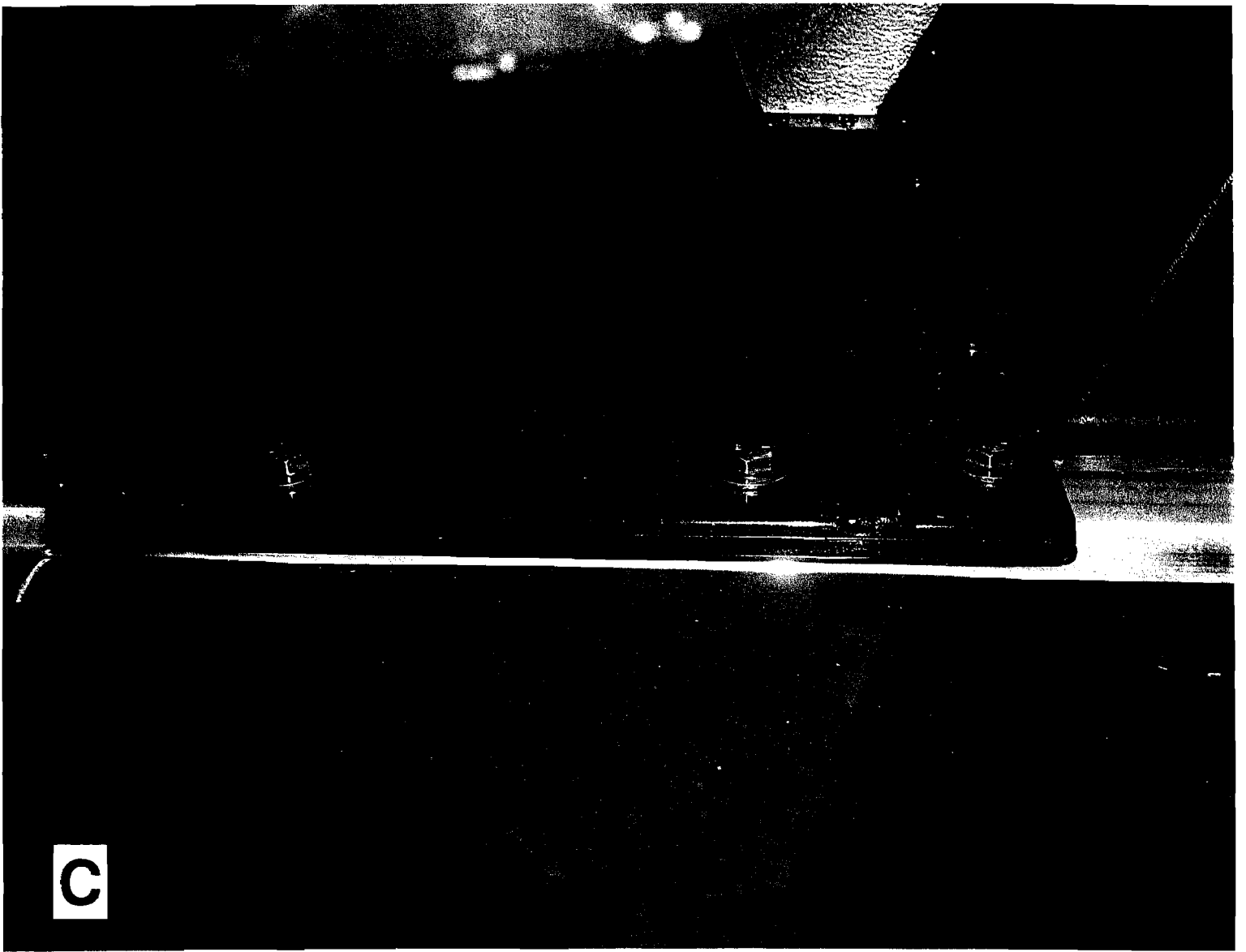


Install "C"

u c "

702981 Service Kit Seat Hdw. Unistrut

Indented Bill of Material		User	Required	Drawing number	From	To	Qty per
702981	Service Kit Seat Hdw. Unistrut		1.000	IN702981			
360120	1/2x1 3/8 Flat Washer		1.000	D360722 REV.161	08/18/2006		1.000
702341	Washer 1/2 Id X 2 Od X 1/8 Th		1.000	A360722 REV 167	08/18/2006		1.000
702344	Spin Locknut Hex Hd 1/2-13		1.000	D360722	08/18/2006		1.000
702345	Flange Bolt 1/2-13 X 3" Gr 5		1.000	D360722 REV 167	08/18/2006		1.000
702945	Washer "D" Profile		1.000	B702945	08/18/2006		1.000



C

3 Passenger Seats

GM 10K

Date Sorted 1-1-02 thru 5-16-06

LIST A

Total 88 Units

State	Body#	Dealer	Customer	# Seats Collins 39"
1 CT	012326	FIRST STUDENT	STONINGTON (P.O. 22194)	4
2 CT	022101	DATTCO	STUDENT TRANSP.	8
3 CT	022102	DATTCO	STUDENT TRANSP.	8
4 CT	022103	DATTCO	STUDENT TRANSP.	5
5 CT	022104	DATTCO	STUDENT TRANSP.	8
6 CT	022105	DATTCO	STUDENT TRANSP.	8
7 CT	022106	DATTCO	STUDENT TRANSP.	8
8 CT	022107	DATTCO	STUDENT TRANSP.	8
9 CT	022113	DATTCO	STUDENT TRANSP	8
10 CT	022114	DATTCO	STUDENT TRANSP	8
11 CT	022115	DATTCO	STUDENT TRANSP	8
12 CT	022116	DATTCO	STUDENT TRANSP	8
13 CT	022117	DATTCO	STUDENT TRANSP	8
14 CT	022118	DATTCO	STUDENT TRANSP	8
15 CT	022119	DATTCO	STUDENT TRANSP	8
16 CT	022120	DATTCO	STUDENT TRANSP	8
17 CT	022121	DATTCO	STUDENT TRANSP	8
18 CT	022122	DATTCO	STUDENT TRANSP	8
19 CT	022123	DATTCO	STUDENT TRANSP	8
20 CT	022124	DATTCO	STUDENT TRANSP	8
21 CT	022125	DATTCO	STUDENT TRANSP	8
22 CT	022126	DATTCO	STUDENT TRANSP	8
23 CT	022127	DATTCO	STUDENT TRANSP	8
24 CT	022128	DATTCO	STUDENT TRANSP	8
25 CT	022129	DATTCO	STUDENT TRANSP	8
26 CT	022131	DATTCO	STUDENT TRANSP	4
27 CT	022132	DATTCO	STUDENT TRANSP	4
28 CT	022133	DATTCO	STUDENT TRANSP	4
29 CT	022134	DATTCO	STUDENT TRANSP	2
30 TX	022139	ONE STOP BUS	VENUS ISD	8
31 CT	022140	DATTCO	STOCK	4
32 CT	022141	DATTCO	STOCK	4
33 CT	022142	DATTCO	STOCK	6
34 CT	022143	DATTCO	STOCK	6
35 CT	022144	DATTCO	STOCK	8
36 CT	022145	DATTCO	STOCK	8
37 CT	022154	DATTCO	STUDENT TRANSP	8
38 CT	022169	DATTCO	STUDENT TRANSP	4
39 PA	028052	WOLF-PA	STOCK	8
40 PA	028053	WOLF-PA	STOCK	8
41 AZ	012328	I-10	WICKENBURG	6
42 CT	022247	DATTCO	STOCK	4
43 CT	022248	DATTCO	DEMO	4
44 CT	022249	DATTCO	DEMO	4
45 CT	022250	DATTCO	CHESHIRE B OF E	8

3 Passenger Seats

LIST A

GM 10K

Date Sorted 1-1-02 thru 5-16-06

Total 88 Units

State	Body#	Dealer	Customer	# Seats Collins 39"	
46	CT	022252	DATTCO	STOCK	8
47	CT	022253	DATTCO	STOCK	8
48	CT	022254	DATTCO	STOCK	8
49	CT	022255	DATTCO	STOCK	8
50	CT	022256	DATTCO	STOCK	8
51	CT	022257	DATTCO	STOCK	8
52	CT	022258	DATTCO	STOCK	8
53	CT	022259	DATTCO	RIDGEFIELD	4
54	TX	032098	ONE STOP BUS	DALLAS COUNTY	8
55	TX	032099	ONE STOP BUS	DALLAS COUNTY	8
56	TX	032100	ONE STOP BUS	DALLAS COUNTY	8
57	TX	032101	ONE STOP BUS	DALLAS COUNTY	8
58	TX	032102	ONE STOP BUS	DALLAS COUNTY	8
59	TX	032103	ONE STOP BUS	DALLAS COUNTY	8
60	TX	032104	ONE STOP BUS	DALLAS COUNTY	8
61	TX	032105	ONE STOP BUS	DALLAS COUNTY	8
62	TX	032106	ONE STOP BUS	DALLAS COUNTY	8
63	TX	032107	ONE STOP BUS	DALLAS COUNTY	8
64	TX	032108	ONE STOP BUS	DALLAS COUNTY	8
65	TX	032109	ONE STOP BUS	DALLAS COUNTY	8
66	TX	032110	ONE STOP BUS	DALLAS COUNTY	8
67	TX	032111	ONE STOP BUS	DALLAS COUNTY	8
68	TX	032112	ONE STOP BUS	DALLAS COUNTY	8
69	TX	032113	ONE STOP BUS	DALLAS COUNTY	8
70	TX	032114	ONE STOP BUS	DALLAS COUNTY	8
71	TX	032115	ONE STOP BUS	DALLAS COUNTY	8
72	TX	032116	ONE STOP BUS	DALLAS COUNTY	8
73	TX	032117	ONE STOP BUS	DALLAS COUNTY	8
74	OH	032197	AMERICAN BUS	MIAMI VALLEY	7
75	OH	032198	AMERICAN BUS	MIAMI VALLEY	7
76	MT	042001	HARLOW	STAR SCHOOL	6
77	WA	042004	HARLOW	CASCADE	7
78	WA	042030	HARLOW	NORTH MASON	8
79	WA	042031	HARLOW	NORTH MASON	8
80	WA	042052	HARLOW	NORTH MASON	8
81	WA	042073	HARLOW	YELM COMM	6
82	WA	042074	HARLOW	YELM COMM	6
83	WA	042076	HARLOW	MARYSVILLE	8
84	WA	042077	HARLOW	MARYSVILLE	8
85	WA	052015	HARLOW	BETHEL SCHOOL	8
86	WA	052016	HARLOW	BETHEL SCHOOL	8
87	WA	052115	HARLOW	CLOVER PARK	8
88	WA	052116	HARLOW	CLOVER PARK	8
				636	

Single Wheel

3 Pass Seats

Date Sorted 1-1-02 thru 5-16-06

54 Units

LIST A

State	Body #	Dealer	Customer	Product Type	# Seats Collins 39"
1 NM	028131	TILLERY	GLEN RUSS	CSS-7446-C	2
2 TX	028132	ONE STOP BUS	RICHLAND-SPRING	CSS-7450-C	3
3 PA	038002	WOLF-PA	SCHULTZ	CSS-7446-G	4
4 PA	038011	WOLF-PA	SCHULTZ	CSS-7446-C	4
5 NY	028133	FACTORY DIRECT	STOCK	CSS-7446-C	3
6 NY	028134	FACTORY DIRECT	STOCK	CSS-7446-C	3
7 NY	028135	FACTORY DIRECT	STOCK	CSS-7446-C	3
8 NY	028136	FACTORY DIRECT	STOCK	CSS-7446-C	3
9 NY	028137	FACTORY DIRECT	STOCK	CSS-7446-C	3
10 NY	028138	FACTORY DIRECT	STOCK	CSS-7446-C	3
11 NY	028139	FACTORY DIRECT	STOCK	CSS-7446-C	3
12 NY	028140	FACTORY DIRECT	STOCK	CSS-7446-C	3
13 PA	038046	WOLF-PA	UNIV OF PITTSBURGH	CSS-7446-C	4
14 MT	048014	HARLOW	LIMA PUBLIC	CSS-7450-C	4
15 NY	048015	ARCOLA	STOCK	CSS-7446-C	4
16 NY	048016	ARCOLA	STOCK	CSS-7446-C	4
17 NY	048017	ARCOLA	STOCK	CSS-7446-C	4
18 NY	048018	ARCOLA	STOCK	CSS-7446-C	4
19 NY	048019	ARCOLA	STOCK	CSS-7446-C	4
20 NY	048020	ARCOLA	STOCK	CSS-7446-C	4
21 NY	048021	ARCOLA	STOCK	CSS-7446-C	4
22 NY	048022	ARCOLA	STOCK	CSS-7446-C	4
23 NY	048023	ARCOLA	STOCK	CSS-7446-C	4
24 NY	048024	ARCOLA	STOCK	CSS-7446-C	4
25 NY	048025	ARCOLA	STOCK	CSS-7446-C	4
26 NY	048026	ARCOLA	STOCK	CSS-7446-C	4
27 NY	048027	ARCOLA	STOCK	CSS-7446-C	4
28 NM	048028	TILLERY	GLEN-RUSS-FT SUMNET	CSS-7446-C	2
29 NY	048029	ARCOLA	STOCK	CSS-7446-C	2
30 NY	048030	FACTORY DIRECT	STOCK	CSS-7446-C	4
31 NY	048031	FACTORY DIRECT	STOCK	CSS-7446-C	4
32 NY	048032	FACTORY DIRECT	STOCK	CSS-7446-C	4
33 NY	048033	FACTORY DIRECT	STOCK	CSS-7446-C	4
34 NY	048034	FACTORY DIRECT	STOCK	CSS-7446-C	4
35 NY	048035	ARCOLA	STOCK	CSS-7446-C	2
36 NY	048036	FACTORY DIRECT	STOCK	CSS-7446-C	2
37 NY	048037	FACTORY DIRECT	STOCK	CSS-7446-C	2
38 NY	048038	FACTORY DIRECT	STOCK	CSS-7446-C	4
39 CT	055001	DATTCO	ONCE UPON A TIME	CSS-7446-C	4
40 NY	068007	FACTORY DIRECT	STOCK	CSS-7446-C	2
41 NY	068008	FACTORY DIRECT	STOCK	CSS-7446-C	2
42 NY	068009	FACTORY DIRECT	STOCK	CSS-7446-C	2
43 NY	068010	FACTORY DIRECT	STOCK	CSS-7446-C	2
44 NY	068011	FACTORY DIRECT	STOCK	CSS-7446-C	2
45 NY	068012	FACTORY DIRECT	STOCK	CSS-7446-C	2
46 NY	068013	FACTORY DIRECT	STOCK	CSS-7446-C	2
47 NY	068014	FACTORY DIRECT	STOCK	CSS-7446-C	2
48 NY	068015	FACTORY DIRECT	STOCK	CSS-7446-C	2
49 NY	068016	FACTORY DIRECT	STOCK	CSS-7446-C	2
50 NY	068017	FACTORY DIRECT	STOCK	CSS-7446-C	2
51 NY	068018	FACTORY DIRECT	STOCK	CSS-7446-C	2
52 NY	068019	FACTORY DIRECT	STOCK	CSS-7446-C	2
53 NY	068020	FACTORY DIRECT	STOCK	CSS-7446-C	2
54 NY	068021	FACTORY DIRECT	STOCK	CSS-7446-C	2

Total 165

Units 54

FREEDMAN SEATS

LIST B

	State	Body #	Dealer	Customer	# of Seats
1	IN	012274	SPEEDWAY	CLARKSVILLE	7
2	IN	012283	SPEEDWAY	BATESVILLE COMM SCHOOL	7
3	IN	022003	SPEEDWAY	BARR-REEVE COMM SCHOOL	7
4		022004	SPEEDWAY	GREATER CLARK	7
5		022005	SPEEDWAY	GREATER CLARK	7
6	IN	022072	SPEEDWAY	NORTHEAST SCHOOL	7
7	IN	022112	SPEEDWAY	WEST CLARK COMM SCHOOL	7
8	IL	022147	MIDWEST	J. STERLING MORTON HIGH	7
9	IL	022148	MIDWEST	J. STERLING MORTON HIGH	7
10	IL	022149	MIDWEST	GRANT PARK COMM. UNIT	7
11	IL	022150	MIDWEST	DELASALLE HS	7
12	IL	022151	MIDWEST	DELASALLE HS	7
13	IN	022161	SPEEDWAY-T.H	BROWN COUNTY	7
14	IL	022163	MIDWEST	REED CUSTER SD 255	7
15	IL	022164	MIDWEST	REED CUSTER SD 255	7
16		022165	MIDWEST	STOCK 22-503	7
17	IL	022166	MIDWEST	LOCKPORT HS DIST. 205	7
18	IL	022167	MIDWEST	LOCKPORT HS DIST. 205	7
19	IL	022170	MIDWEST	JOLIET CATHOLIC ACADEMY	7
20	IL	022171	MIDWEST	JOLIET CATHOLIC ACADEMY	7
21	IL	022172	MIDWEST	JOLIET CATHOLIC ACADEMY	7
22	IL	022173	MIDWEST	JOLIET CATHOLIC ACADEMY	7
23	IN	022174	MIDWEST	UNIVERSITY HIGH SCHOOL	7
24	IL	022175	MIDWEST	EVERGREEN PARK HS	7
25	IL	022176	MIDWEST	EVERGREEN PARK HS	7
26	IL	022183	MIDWEST	SOWIC EDUCATIONAL CTR	7
27	IL	022184	MIDWEST	AMBOY CUSD 272	7
28	IL	022185	MIDWEST	ROCHELLE TWP HS #212	7
29	IL	022186	MIDWEST	PEORIA NOTRE DAME HIGH	7
30	IL	022187	MIDWEST	BREH PREPARATORY	7
31	IL	022237	MIDWEST	BENEDICTINE UNIVERSITY	7
32	IL	022238	MIDWEST	BENEDICTINE UNIVERSITY	7
33	IL	022239	MIDWEST	BISHOP MCNANARA H.S.	7
34	IN	022240	MIDWEST	ROWN POINT SCHOOL CORP	7
35	IN	022241	MIDWEST	ROWN POINT SCHOOL CORP	7
36	IN	022243	SPEEDWAY	ANESVILLE COMM. SCH CORP	7
37		032012	LASSETER	GREENHILL	7
38		032013	LASSETER	STOCK	7

39		032014	LASSETER	STOCK	7
40		032015	LASSETER	STOCK	7
41		032016	LASSETER	STOCK	7
42		032043	HARLOW	DEMO	7
43		032048	SPEEDWAY	RISING SUN	7
44		032049	LASSETER	ST. ANDREWS	7
45		032050	LASSETER	FAITH ASSEMBLY	7
46		032052	LASSETER	GRACE COMM	7
47		032083	CHARLOTTE	WOODLAND U.M.	7
48	TX	032120	LASSETER	GRACE COMM OF TYLER	7
49	SC	032150	CHARLOTTE	PAUL UNITED METH CHUR	7
50		052131	ARCOLA	NIAGRA FALLS	2

LIST C

UNISTRUT 3 PASSENGER SEAT

BODY #	DEALER	CUSTOMER	# OF SEATS
052027	HOGLUND	ADAM SERVICES INC.	7
052028	HOGLUND	ROSEVILLE SCHOOLS	7
059691	MASTERS	ST. MARKS UNITED METHODIST	7
059692	MASTERS	CHILDREN'S LEARNING CENTER	7
059693	MASTERS	STOCK UNIT	7
059694	MASTERS	STOCK UNIT	7
052128	HOGLUND	MORA PUBLIC SCHOOLS #332	6
052129	HOGLUND	NEW ULM TRANSIT, INC.	6
TOTAL			8