

06E-014
(9 Pgs.)

Chassis Technology

ZF Lemforder Corporation · 15811 Centennial Drive
Northville, MI 48168

2006 Feb -6 A 9:50
DEFECT INVESTIGATION
Associate Administrator for Enforcement
National Highway Traffic Safety Administration
400 Seventh Street, S.W. (NSA-01)
Washington, D.C. 20590

Dept. Customer Director
From Beth Walker
Phone 734-207-2823
Fax 734-416-1948
E-mail elizabeth.walker@zf.com
Your Ref.
Our Ref.

Date January 27, 2006

Part 573 Notification to NHTSA

Dear Associate Director:

Dear Associate Administrator:

On January 23, 2006, ZF decided that a defect which relates to motor vehicle safety exists in items of motor vehicle equipment listed below, and is furnishing notification to the National Highway Traffic Safety Administration in accordance with 49 CFR Part 573 Defect and Non-compliance Reports.

573.6 (c)(1): Manufacturer's Name of the Item of Equipment

Lemförder International AG & Co. KG, Borgwardstr. 16, 28279 Bremen, Germany

Contact person:

Hill, Oliver,

Marketing Manager

ZF Trading North America, LLC

909 Crocker Road

44145 Westlake, OH

USA

Tel: (440) 871-4890 ext. 111

Mobile: (440) 915-9284

Fax: (440) 871-6904

President: Reinhard Buhl
www.zf.com

ZF Lemforder Corporation
15811 Centennial Drive
Northville, MI 48168 · USA
Phone 1-734-416-6200
Fax 1-734-416-8331

573.6 (c)(2)(iii): Identification of Items of Motor Vehicle Equipment

Generic Name of item	Model
Repair Kit Steering Link	Repair Kit Steering Link
Wheel Bearing Kit	Wheel Bearing Kit

Supplier	Customer	Part number	Date of supply
Lemförder International AG & Co. KG	Altrom America Corp.	1016402	Sept 05
Lemförder International AG & Co. KG	WORLD PAC SOUTH Brunswick	1402301	Mai 05
Lemförder International AG & Co. KG	WORLD PAC SOUTH Brunswick	1402301	June 05
Lemförder International AG & Co. KG	WORLD PAC SOUTH Brunswick	1402301	July 05
Lemförder International AG & Co. KG	WORLD PAC SOUTH Brunswick	1402301	November
Lemförder International AG & Co. KG	WORLD PAC SOUTH Brunswick	1402301	December
Lemförder International AG & Co. KG	WORLD PAC	1402301	June 05
Lemförder International AG & Co. KG	WORLD PAC	1402301	July 05
Lemförder International AG & Co. KG	WORLD PAC	1402301	December 05
Lemförder International AG & Co. KG	Jürgen Liebisch GmbH	1402301	August 05

573.6 (c)(2)(v) Dealer that Purchased the Component

Altrom America Corp.
 3102 So. 96th St.
 LAKEWOOD, WA 98499
 USA

WORLD PAC
 37137 Hickory Street
 94560-5522 Newark
 USA

WORLD PAC South Brunswick
 300 Herrod Blvd.
 08810 Dayton
 USA

Jürgen Liebisch GmbH
 Eiffestr. 462 – 464
 20537 Hamburg

573.6 (c)(3): Total Number of Parts Containing the Defect

Supplier	Customer	Part number	Number of parts potentially involved
Lemförder International AG & Co. KG	Altrom America Corp.	1016402	10
Lemförder International AG & Co. KG	WORLD PAC SOUTH Brunswick	1402301	34
Lemförder International AG & Co. KG	WORLD PAC	1402301	44
Lemförder International AG & Co. KG	Jürgen Liebisch GmbH	1402301	4
Lemförder International AG & Co. KG	162 customers with no connection to the US	1002003, 1003003, 1003503, 1349101, 1402301, 1778602 1016402	31 422

573.6 (c)(4): Percentage of Parts Estimated to Contain the Defect

Unknown

573.6 (c)(5): Description of the Defect

Defect

The parts with the numbers 1002003, 1003003, 1003503, 1349101, 1402301, 1778602 and 1016402 come supplied with attachment screws produced by a third party. At this present time, we cannot exclude that these screws represent a safety risk, since at least some of those screws do not exhibit the minimum necessary resilience required.

Causes

Process failure.

Consequences

The screws break off.

Any warning?

No warning

Supplier of the Defect component

EUROPART Industrieservice GmbH
Gewerbestraße 18 – 20
58285 Gevelsberg
Germany

573.6 (c)(6) Chronology of all principal events

2 Field failures	Dec 2005
1 Field failure	January 10, 2006
1 Field failure	January 17, 2006
2 Field failures	January 18, 2006
3 Field failures	January 19, 2006
1 Field failures	January 20, 2006

573.6 (c)(8)(i) Remedy Program:

Field:

Recall all parts, delivered past April 1st 2005.

573.6 (c)(8)(ii) Schedule

Notification to the customers

Start of notification: January 20, 2006
Visits at our customer

Schedule for recall in USA (part number 1016402) is finished; all parts are recovered. The recalled part number 14023001 is still running.

573.6 (c)(9) Copy of All Notices Bulletins and Communications

See attachment notification letters to customers.

If you or your staff, have any questions, please feel free to contact me at the number listed above.

Sincerely,

A handwritten signature in black ink that reads "Beth Walker". The signature is written in a cursive, slightly slanted style.

Beth Walker
ZF NAO Tread Act Coordinator

(Main letter)

From: ZF Trading
To: First trade level

Safety Note
on damaged screws

Dear Madam, Sir:

Recently we had requested you **to put under reject hold** all parts mentioned in the enclosure in your warehouses or otherwise available at your end. **Please do not deliver these parts to your customers but return them to Lemförder International AG & Co KG.**

Please contact all purchasers of those parts using the enclosed letter and ask them to return these parts.

Kindly inform us on a weekly basis of the parts sent back by your customers and send this information to the following e-mail account:

rainer.lenschen@zf.com

Quality considerations in our company have revealed that due to faulty deliveries of screws from our supplier it cannot be excluded that parts shipments of all parts mentioned in the enclosure after the 1st April 2005 may adversely affect vehicle safety and could possibly cause an **accident**.

We kindly ask you for your understanding and support.

(Enclosure to main letter)

From: First trade level
To: Second trade level

Safety Note
on damaged screws

Dear Madam, Sir:

By order of our parts supplier we request you **to put under reject hold** all parts mentioned in the enclosure in your warehouses or otherwise available at your end and return these parts under warranty. **Please do not deliver these parts to your customers.**

In case that any of these parts have already been delivered to workshops or other dealers you are requested to contact these workshops or dealers using this letter.

Since we also want to send the vehicle owners a safety note asking them to have their vehicles checked in the workshop we need the data of any purchasers (name, address, phone number, vehicle registration plate) of the parts mentioned in the enclosure. Please send this information to the following e-mail account:

rainer.lenschen@zf.com

You can also contact the vehicle owners directly using the also enclosed letter and ask them for a security check or the exchange of the defective screws free of charge.

Quality considerations of the manufacturer have revealed that due to faulty deliveries of screws from our supplier it cannot be excluded that parts shipments of all parts mentioned in the enclosure after the 1st April 2005 may adversely affect vehicle safety and could possibly cause an **accident**.

We kindly ask you for your understanding and support.

Security Check of the vehicle

Dear Sir ... (name),

According to our files you are the owner of the vehicle registered under
(licence plate number).

Quality considerations of the manufacturer of the parts used for the last repair in your vehicle have shown that it is possible that the screws used for repair can break off and therefore the security of you and your vehicle could be in danger and an accident might occur.

To ensure, that your vehicle is in a safe condition and to exclude the risk of an accident we would like to check the screws used for the repair on your car.

We therefore ask you to fix an appointment for such a security check at your earliest convenience. Of course we will make such an appointment according to your time schedule.

The security check and the possible exchange of parts will be free of charge for you.

In case you have sold the above mentioned vehicle, we kindly ask you to pass this letter on to the new owner or let us know the name and address of the new owner.

Thank you very much for your cooperation.

Kind regards,

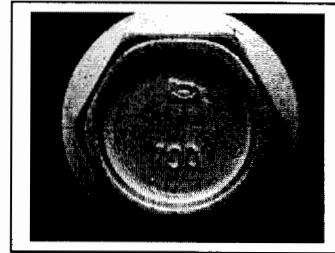
Safety Note
defective screws
(Part-Number 1402402)

Affected Repair-Kits

1002003	/	Steering Link	/	Audi 80 (89.89Q.8A.B3)	/	left
1003003	/	Steering Link	/	Audi 80 (89.89Q.8A.B3)	/	left
1003503	/	Steering Link	/	Audi 80 (89.89Q.8A.B2)	/	right
1778602	/	Steering Link	/	Ford KA, Fiesta, Puma/Mazda 121		
1016402	/	Steering Link	/	VW T4		
1402301	/	Wheel Bearing Kit	/	Mercedes SL (R129)		

Affected Period
all repairs since **April 1st 2005**

Identification of the possible
defective screw.
Screws with these marks
(number "100" on the screw head)
have to be changed.



Please return the parts as warranty to your supplier addressed to:

Lemförder International AG & Co. KG
Mr Lenschen
Borgwardstraße 16
28279 Bremen
GERMANY

Please use only the following screws for repair

VW T4 / Audi 80	M 10 x 20 property class 10.9 or VW OE-Nr. N 101 705 06
Ford Fiesta / KA, Puma/Mazda 121	M10 x 30 property class 10.9 or Ford OE-Nr. 6790 116
Mercedes	Mercedes OE- Part M10 x 23 property class 10.9

Thank you for your cooperation.