

Service and Warranty Reference Library

Date: April 25, 2006

To: All Saab Dealers; Saab Service Managers; Saab Parts Managers

Subject: Product Safety Recall 15023, re-inspection of certain vehicles previously inspected under recall 15021

Product Safety Recall 15021 has been modified to expand the IDM serial number range which determines whether the IDM should be replaced.

Vehicles previously inspected using the serial number range listed in the original MI may have had an IDM not replaced under the original range, but should be replaced using the IDM serial number range in the new Modification Instructions.

Customers of those vehicles will receive an additional letter the week of May 12 advising them to re-contact their Saab dealer to have the IDM re-inspected. Owner's of 9-5 V6 models that had only one IDM replaced will also receive the letter.

Vehicles that require the additional inspection are listed in IRIS Warranty Inquiry by Chassis screen as open under recall 15023 but complete for recall 15021.

Only those vehicles showing open for 15023 should be claimed under the following warranty claim information. Vehicles having an open 15021 recall should be submitted under the original recall warranty information.

Follow inspection instructions in MI 248-2611ed.2

Warranty Claim Information

Inspection only

Failed Object	15023
Fault/Reason	08
Location	0
Warranty type	05
Repair/Action	08
Recall Action Code (RAC)	1
Labor Operation 4 cylinder	1502303
Labor Time	0.3
Labor Operation 6 cylinder	1502304
Labor Time	0.5
Material allowance for Krytox (place in sublet)	\$3.20

(See attached file: mi248-2611 ed2 en.pdf)

(See attached file: 15023 letter.pdf)



MODIFICATION INSTRUCTION

MI No. 248-2611 Edition 2	Date May 2006	9-5
Distr. US, CA, JP, TW		9-3 (9400)

Check/replacement of ignition discharge module

Product Safety Recall 150 21

Cars in stock must be rectified before delivery.
A personal communication must be sent to the owners of cars already delivered requesting them to get in touch with the nearest Saab garage as soon as possible to have the fault rectified.

Important

The method description in this document differs from the corresponding one in WIS.

Cars affected

Saab 9-5 M00-02 with engine alternative B205/B235
Saab 9-5 M01 with engine alternative B308
Saab 9-3 (9400) M00 - 02 with engine alternative B205/B235

Background

The ignition discharge module may break down due to an electrical overload. The fault often occurs during a start attempt, resulting in the engine not starting. In rare cases, the fault arises during driving.

Parts required

If the ignition discharge module is to be replaced:

55 562 588 (CA: 55 559 955) Ignition discharge module for B205/235

55 561 133 Ignition discharge module for B308.
1 or 2 per car

Contact Protect CRC (www.crcindustries.com) or Contact 61 or similar

If the ignition discharge module is not to be replaced:

16-30 19 312 Krytox (sufficient for approx. 30 cars)

Contact Protect CRC (www.crcindustries.com) or Contact 61 or similar

For fitting the modification identity plate (not US/CA):

12 785 148 Modification identity plate

93 160 907 Cleaning agent Motip Dupli, aerosol
400 ml (sufficient for 50-100 cars)

Saab Automobile AB Bulletins are intended for use by professional Saab technicians only, NOT a "do-it-yourselfer". They are designed to inform these technicians of conditions that may occur on some vehicles, or to provide information that could assist in the proper service of a vehicle. Saab trained technicians have the equipment, tools, safety instructions, and know-how to do a job properly and safely. If a condition is described, DO NOT assume that the bulletin applies to your vehicle, or that your vehicle will have the condition. See your authorized Saab Dealer for information on whether your vehicle may benefit from the information.
© 2006 Saab Automobile AB. All rights reserved.

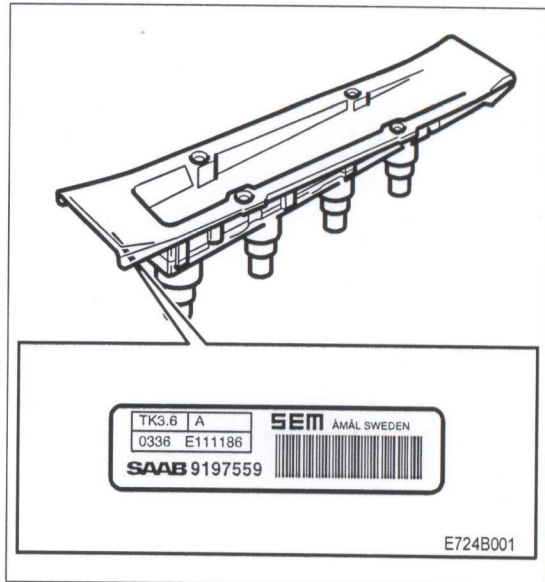
ENG

Procedure

Checking the modification identity plate (not US/CA)

Before undertaking any measures, check box B4 (9-3 M00-M02), B1 (9-5 M00-M01) or F1 (9-5 M02) of the modification identity plate.

- 1 Remove the ignition discharge module as described in WIS - Engine - Trionic T7 - Adjust/replace - Ignition discharge module. Do not carry out "Extended ignition discharge module diagnose"
- 2 Check the serial number of the ignition discharge module.
 - B205/235:** Is the serial number E001000 or higher?
 - B308:** Is the serial number F001000 or higher?
 - Yes:** The ignition discharge module must not be replaced.
 - NO:** The ignition discharge must be replaced.
- 3 Fit the ignition discharge module as described in WIS.
 - If the old ignition discharge module is to be refitted, lubricate it with Krytox.
 - New ignition discharge modules come pre-lubricated with Krytox and do not require additional lubrication.
- 4 Dispose of replaced ignition discharge modules in accordance with the laws of the relevant market. The modules are to be disposed of in a manner that makes their reuse impossible.



Marking the modification identity plate (not US/CA)

Upon completion of the procedure, the modification identity plate is to be marked in box B4 (9-3 M00-M02), B1 (9-5 M00-M01) or F1 (9-5 M02). Mark the box with a "7" if the action was carried out by the importer or an "8" if it was carried out by the dealer.

Fitting the modification identity plate (not US/CA)

Note

A modification identity plate must only be fitted where local directives require the marking of the car.

Fit the modification identity plate as described in WIS.
9-5 M04 - General - General - Technical data - Plates and labels

Standard times/Warranty information

See separate information.