

 **HYUNDAI AMERICA TECHNICAL CENTER, INC.**

A Subsidiary of
Hyundai Motor Company (Korea)

5075 Venture Drive
Ann Arbor, MI 48108

Tel: (734) 747-6600
Fax: (734) 747-6699

August 1, 2005

Mr. Ronald Medford
Acting Associate Administrator for Enforcement
National Highway Traffic Safety Administration
400 Seventh Street, S.W.
Washington, D.C. 20590

RE: Recall Number 05V-316 Defect Information Report (additional information)
(Hyundai Campaign 070)

Dear Mr. Medford:

Hyundai Motor Company previously submitted a Defect Information Report to NHTSA regarding a recall campaign of approximately 2,017 model year 2006 Hyundai Sonata vehicles equipped with 3.3 liter engines and produced beginning May 5, 2005 through June 10, 2005 (NHTSA Recall Number 05V-316) pursuant to Part 573 of Title 49 of the Code of Federal Regulations. The affected vehicle quantity has been revised to 1,970 vehicles. Dealers were notified of the recall on July 12, 2005 and owner notification was completed in one mailing on July 29, 2005.

Enclosed for NHTSA's files are final copies of the Technical Service Bulletin, owner notification letter and dealer notification letters.

Sincerely,



Robert Babcock
Manager, Corporate Affairs

Attachments: 5

RECEIVED
NHTSA-215
2005 AUG - 3 P 2: 18
OFFICE OF
DEFECTS INVESTIGATION

July 12, 2005

**TO: ALL HYUNDAI DEALER PRINCIPALS/GENERAL MANAGERS:
ALL HYUNDAI SALES MANAGERS:
ALL HYUNDAI DEALERSHIP SERVICE MANAGERS:
ALL HYUNDAI DEALERSHIP PARTS MANAGERS:**

Subject: Campaign 070 – 2006 MY Sonatas equipped with 3.3 liter engines - Electronic Stability Control (ESC) Hydraulic Electronic Control Unit (HECU) Reprogramming Procedure

Hyundai Motor America is conducting a Customer Notification Electronic Stability Control (ESC) Hydraulic Electronic Control Unit (HECU) Reprogramming Campaign on 2006 MY Sonata vehicles equipped with 3.3 liter engines produced beginning May 5, 2005 through June 10, 2005.

2006 MY Sonata vehicles are equipped with Electronic Stability Control (ESC), which detects if the vehicle is over-steering or under-steering. On some 2006 MY Sonata vehicles equipped with 3.3 liter engines, the ESC system may be too sensitive and may activate under conditions where ESC Control may not be needed. This campaign provides a procedure to reprogram the ESC Hydraulic Electronic Control Unit (HECU) software by using the Hi-Scan Pro to update the software to ensure that the ESC operates properly.

In order to identify only those vehicles affected by Campaign 070, it will be necessary to access Hyundai Motor America's "Warranty Vehicle Information" screen via DCS Interactive or DCS On-line before reprogramming is started. The "Warranty Vehicle Information" screen will identify affected vehicles with an open Campaign 070. **All in-stock vehicles must have Campaign 070 completed prior to retailing.**

PLEASE NOTE: On July 12, 2005, programming software will be available for download on Hyundai's Service Web Site and on July 14 to dealers who use the Hi-Scan software exchange service. Campaign 070 is a reprogramming only campaign. Dealerships should not order any parts.

Enclosed with the Service Manager's letter are materials which were developed for your use: Dealer Letter, five (5) copies of the Technical Service Bulletin (TSB#05-01-007) containing instructions on performing the service and submitting the campaign claim, and a VIN listing of both your dealer stock and your retail customers affected by this campaign. TSB #05-01-007 will be available on Hyundai's Website on July 12, 2005.

Customer notification letters will be mailed to all affected customers later in July 2005.

It is IMPORTANT TO SUBMIT A CAMPAIGN CLAIM FOR EACH VEHICLE SERVICED so your dealership can be compensated for your work and Hyundai can maintain accurate records of campaign completions.

LEGAL LIABILITY NOTICE: You are required to keep confidential any and all information and documents provided to you by Hyundai Motor America in the conduct of carrying out work for this service campaign. Hyundai Motor America dealers may use owner information provided for the campaign only for the purpose of conducting and performing this service campaign, and for no other purpose.

Hyundai appreciates your cooperation and support. Questions may be directed to your District Parts and Service Manager.

HYUNDAI MOTOR AMERICA

MOTOR VEHICLE RECALL

Dear 2006 Sonata Owner:

This notice is sent to you in accordance with the requirements of the National Traffic and Motor Vehicle Safety Act.

Federal law requires that any vehicle lessor receiving this recall notice must forward a copy of this notice to the lessee within ten days.

Hyundai has decided that a defect, which relates to motor vehicle safety, exists in certain model year 2006 Hyundai Sonata vehicles equipped with 3.3 liter engines that were produced during the period beginning on May 5, 2005 through June 10, 2005.

What is the problem?

- Your vehicle is equipped with Electronic Stability Control (ESC), which can monitor your vehicle as it is being driven and detect if the vehicle is oversteering or understeering. The ESC contained in your vehicle may have been programmed to be oversensitive to the onset of oversteering while driving on banked curves, causing inadvertent application of the front outside brake when ESC activation may not be needed. This may cause the vehicle to slow and may affect the path that the vehicle is traveling. Brake application caused by inadvertent ESC activation may result in a crash.

The ESC switch, located on the instrument panel to the left of the steering wheel, may be pressed to turn off the ESC and prevent inadvertent ESC activation.

What will Hyundai do?

- To ensure that your vehicle's Electronic Stability Control (ESC) works properly, we are asking you to schedule an appointment as soon as possible to take your vehicle to your Hyundai dealer. The Hyundai dealer will reprogram the ESC Hydraulic Electronic Control Unit (HECU). This procedure will be performed at no charge to you. You should plan to leave your vehicle at your Hyundai dealer to have this service performed. Repair times will vary and depend on your dealer's appointment schedule.

What should you do?

- We urge you to call your Hyundai dealer to schedule an appointment to have this work performed as soon as possible.

What if you have other questions?

- If you have any difficulty having this repair performed, we recommend that you call the Hyundai Customer Assistance Center at 1-800-633-5151. If you are still not satisfied that we have remedied this situation without charge, and within a reasonable amount of time, you may wish to write to the Administrator, National Highway Traffic Safety Administration, 400 Seventh Street, S. W., Washington, D.C. 20590, or call their toll-free Vehicle Safety Hotline at 1-888-327-4236 (TTY: 1-800-424-9153), or go to <http://www.safercar.gov>.

We urge your prompt attention to this important safety matter.

Hyundai Motor America

//ALL HMA-BSTE8 07/29/05 08/01/05 08/02/05

TO: All Hyundai Dealership General Managers, Sales Managers,
Service Managers, Parts Managers
FROM: Hyundai Motor America
SUBJECT: Owner Notification Letters - Campaign 070 - Campaign 070
2006 MY Sonatas equipped with 3.3 liter Engines -
Electronic Stability Control (ESC) Hydraulic Electronic
Control Unit (HECU) Reprogramming Procedure

ON JULY 12, 2005, HYUNDAI MOTOR AMERICA ANNOUNCED TO ALL DEALERS
CAMPAIGN 070 - ELECTRONIC STABILITY CONTROL (ESC) HYDRAULIC
ELECTRONIC CONTROL UNIT (HECU) REPROGRAMMING CAMPAIGN ON 2006 MY
SONATA VEHICLES EQUIPPED WITH 3.3 LITER ENGINES.

PLEASE BE AWARE THAT THE OWNER NOTIFICATION LETTERS FOR CAMPAIGN 070
WILL BE SENT TO ALL OWNERS AFFECTED BY THIS CAMPAIGN ON FRIDAY, JULY
29, 2005.

IF YOU HAVE ANY QUESTIONS PLEASE CONTACT YOUR RESPECTIVE DISTRICT
PARTS AND SERVICE MANAGER (DPSM).

//END



HYUNDAI Technical Service Bulletin

		Group	
		CAMPAIGN	
Subject SONATA ESC ECU REPROGRAMMING INSTRUCTIONS - CAMPAIGN 070		Number	
		05-01-007	
		Date	
		JULY, 2005	
		Model	
		2006 SONATA V6	
CIRCULATE TO:	<input checked="" type="checkbox"/> GENERAL MANAGER	<input checked="" type="checkbox"/> PARTS MANAGER	<input checked="" type="checkbox"/> TECHNICIAN
<input checked="" type="checkbox"/> SERVICE ADVISOR	<input checked="" type="checkbox"/> SERVICE MANAGER	<input checked="" type="checkbox"/> WARRANTY MGR	<input checked="" type="checkbox"/> SALES MANAGER

IMPORTANT: DEALERS MUST PERFORM THIS CAMPAIGN ON ALL AFFECTED VEHICLES PRIOR TO CUSTOMER RETAIL DELIVERY AND WHENEVER AN AFFECTED VEHICLE IS IN THE SHOP FOR ANY MAINTENANCE OR REPAIR.

IMPORTANT: WHEN A VEHICLE ARRIVES AT THE SERVICE DEPARTMENT, ACCESS HYUNDAI MOTOR AMERICA'S "WARRANTY VEHICLE INFORMATION" SCREEN VIA DCS INTERACTIVE OR DCS ON-LINE TO IDENTIFY OPEN CAMPAIGNS.

DESCRIPTION:

The Electronic Stability Control (ESC) of some 2006 Sonata vehicles equipped with 3.3 Liter engines may be programmed to be too sensitive, causing inadvertent brake application on banked curves.

To correct this condition, the ESC ECU may be reprogrammed using the Hi-Scan Pro as described in this bulletin.

VEHICLES AFFECTED:

- Model: 2006 SONATA 3.3L vehicles with ESC
- Affected vehicle production date range:
 - Produced from May 5, 2005 through June 10, 2005

ESC ECU SPECIFICATIONS:

MODEL	ESC ECU PART NUMBER	ESC ECU ID	
		PREVIOUS	NEW
2006 SONATA 3.3L with ESC	58920-3K100	38552 291400304000001010000	39534291400100000001010000
		39344 2914001000000001010000	

CAUTIONS BEFORE REPROGRAMMING:

1. Perform reprogramming with the ignition key in the "ON" position.
2. Be careful not to disconnect any cables connected to the vehicle or Hi-Scan Pro during reprogramming.

WARNING:

- When reprogramming the SONATA ESC ECU, the manual reprogramming mode [error mode] is not available.
 - If ESC ECU reprogramming is interrupted during the "ESC ECU software data download" process as a result of cable disconnection, power interruption or battery discharge, the ESC ECU must be replaced.
3. Do not start the engine during reprogramming.
 4. Do not turn the ignition key OFF during reprogramming.
 5. When the reprogramming is completed, wait for about 20 seconds and then start the engine to confirm proper operation of the vehicle.



HYUNDAI Technical Service Bulletin

Group	CAMPAIGN
Number	05-01-007

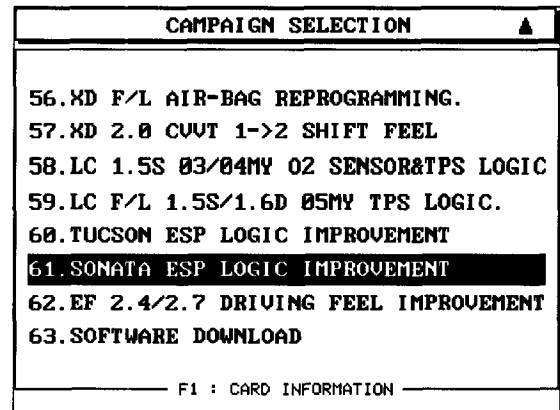
ESC ECU REPROGRAMMING:

NOTE: Verify that the vehicle was manufactured within the affected production date range and the campaign is open per the DCS interactive screen.

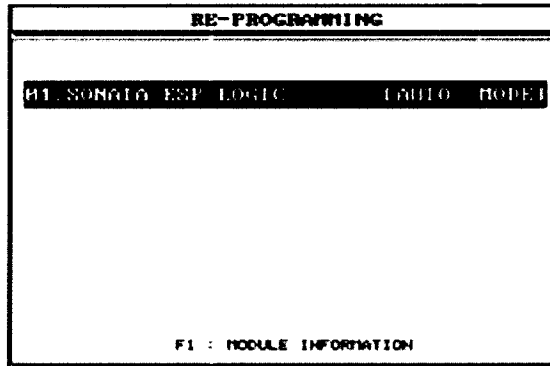
1. Attach the Data Link Connector (DLC) cable to the Hi-Scan Pro main body and securely tighten the two bolts.
2. Remove the system software card from the Hi-Scan Pro and insert the reprogramming software card with the new ECU program into the Hi-Scan top slot.
3. Plug the DLC cable from the Hi-Scan Pro into the data link connector (16-pin connector) under the instrument panel on the driver's side.



4. Turn the ignition switch to the ON position. (Do not start the engine).
5. Turn the Hi-Scan Pro ON and press ENTER.
6. Select option "61. SONATA ESP LOGIC IMPROVEMENT" and press ENTER.



7. Select option "01. SONATA ESP LOGIC [AUTO MODE]" and press ENTER.



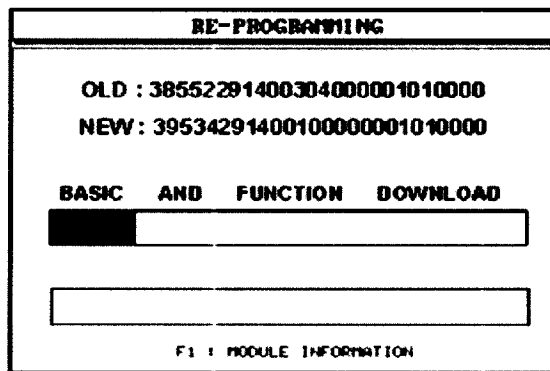
8. Enter "1229" as the password for automatic reprogramming mode and press ENTER.
9. The Hi-Scan Pro will establish communication, check the ESC ECU ID and reprogram the ESC ECU automatically.

CAUTION: IF "ALREADY REPROGRAMMED. PRESS ANY KEY" is displayed on the Hi-Scan Pro screen in step 9, exit the ESC ECU reprogramming procedure by pressing any key. The ESC ECU reprogramming has previously been completed on this vehicle.

10. Turn the ignition key OFF and ON. Press ENTER.

WARNING: Be careful not to interrupt the reprogramming.

- If the reprogramming is interrupted during the "BASIC AND FUNCTION DOWNLOAD" process, repeat the reprogramming procedure again.
- If the reprogramming is interrupted during the "ECU SW DATA DOWNLOAD" process, the ESC ECU must be replaced.



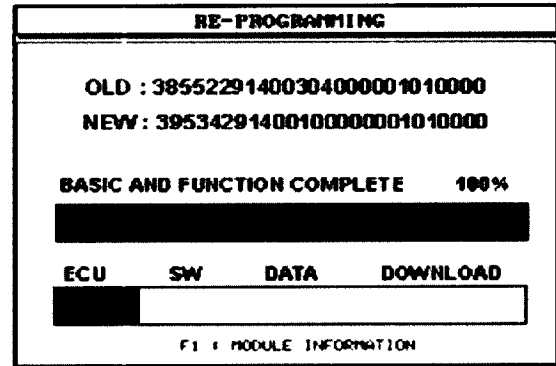


HYUNDAI Technical Service Bulletin

Group	CAMPAIGN
Number	05-01-007

NOTE:

- The Hi-Scan Pro detects the current ESC ECU ID, assigns the new ESC ECU ID and displays them on the Hi-Scan Pro screen.
- Check the ESC ECU ID displayed on the Hi-Scan Pro screen to verify that the correct ESC ECU software is being downloaded. Refer to the "ESC ECU SPECIFICATIONS TABLE" on page 2 of this TSB.



11. Turn the ignition key OFF and ON. Press ENTER.
12. When the reprogramming is completed successfully, turn the ignition key to the OFF position for about 20 seconds and start the engine to confirm proper operation of the vehicle.
13. Check for diagnostic trouble codes using the Hi-Scan Pro with the system software card and erase any trouble codes.

EXPLANATION OF ERROR MESSAGE:

1. "INVALID PASSWORD": Please enter the exact password again.
2. "ALREADY REPROGRAMMED" or "INCORRECT TARGET ID": This reprogramming has previously been completed on this vehicle or the ESC ECU is not subject to this reprogramming procedure.
3. "COMMUNICATION ERROR, PLEASE CHECK THE SYSTEM": In this case, the ESC ECU must be replaced.

CAMPAIGN CLAIM INFORMATION:

OP CODE	OPERATION	OP TIME
51B03010	ESC ECU Reprogramming	0.3 M/H

NOTE: Submit claim using the Campaign Claim Screen.