

TECHNICAL INSTRUCTIONS

FOR

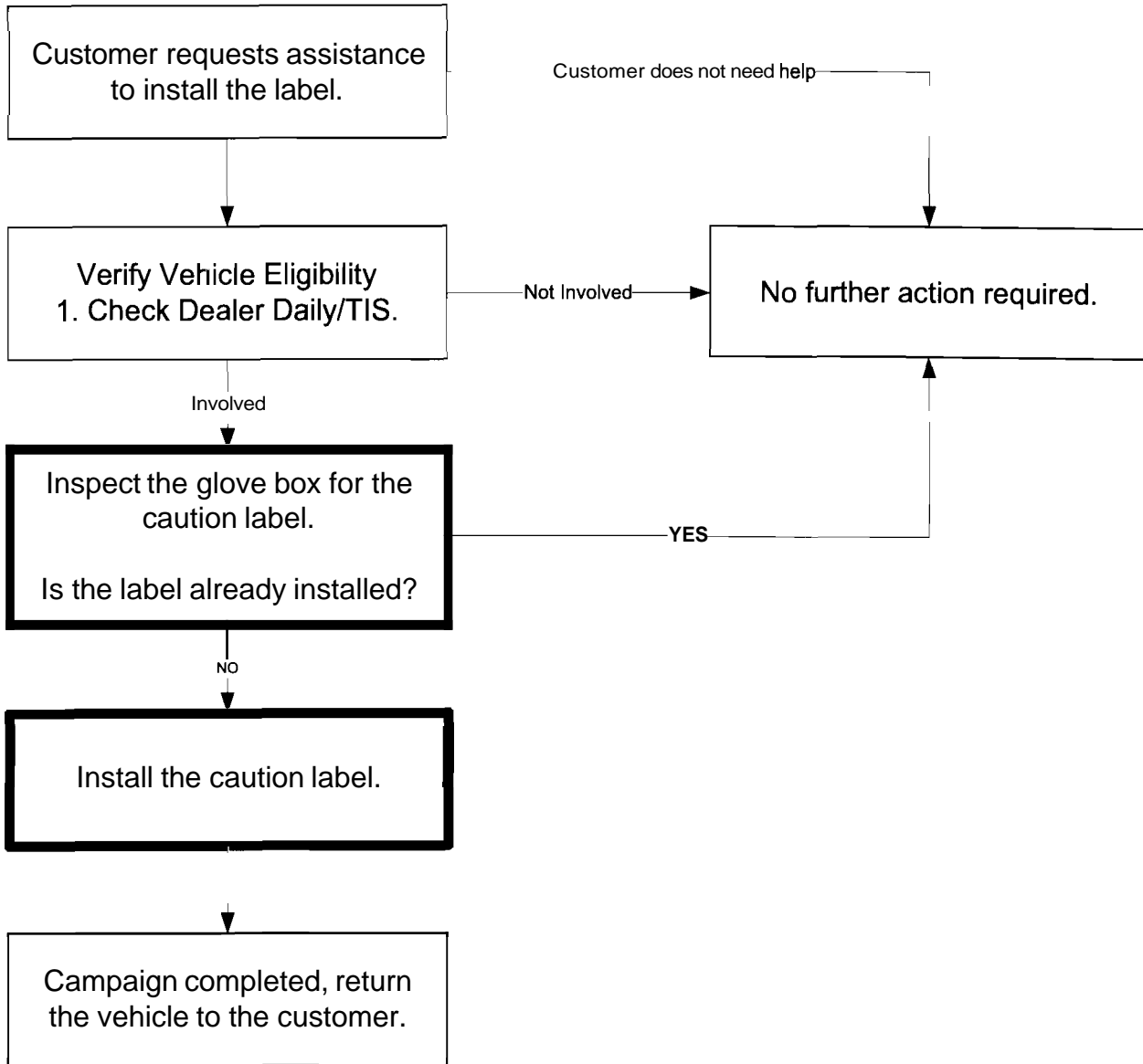
**SPECIAL SERVICE CAMPAIGN 70A
(NON-COMPLIANCE RECALL)**

**2003 THROUGH MID-2005 MODEL YEAR TUNDRA ACCESS CAB
CHILD RESTRAINT ANCHORAGE CAUTION LABEL**

NOTE:

***Owners will be directly mailed the label for this issue. Please assist
any owner with label installation if requested.***

I. OPERATION FLOW CHART



II. IDENTIFICATION OF AFFECTED VEHICLES

A. AFFECTED VINS

- Check Dealer Daily/TIS to confirm the VIN is involved in this SSC. This will verify the vehicle is affected and has not already been completed prior to dealer shipment or by another dealer.
- TMS warranty will not reimburse dealers for repairs conducted on vehicles that are not affected or were completed by another dealer.


III. PREPARATION

A. PARTS

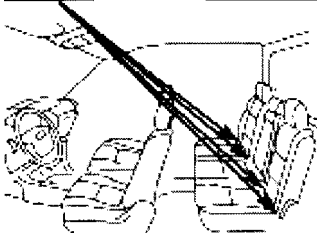
- The caution label will be included in the owner letter for customer vehicles.

IV. WORK PROCEDURE

A. INSPECT THE GLOVE BOX FOR THE CAUTION LABEL



Existing Child Restraint Anchorages



This vehicle is equipped with an Airbag Manual On-Off Switch, but without a child restraint anchorage system in *the* front passenger seat.

Toyota strongly recommends installing your Child Restraint System in the rear seat(s) which is the safest place for your children. There are two child restraint anchorage systems in the rear seats. (See diagram)

If you wish to use a Child Restraint System in the front seat (see request form for details), a Toyota dealer will install a child restraint anchorage system in the front passenger seat free of charge if you so request. Please fill out and return the request form inserted in your owner's manual. If the request form is not available, please contact the Toyota Customer Experience Center at 1-888-270-9371 or 1-800-331-4331 and a request form will be mailed to you.

[NOTE: Actual Label is Yellow]

1) Is the label already installed?

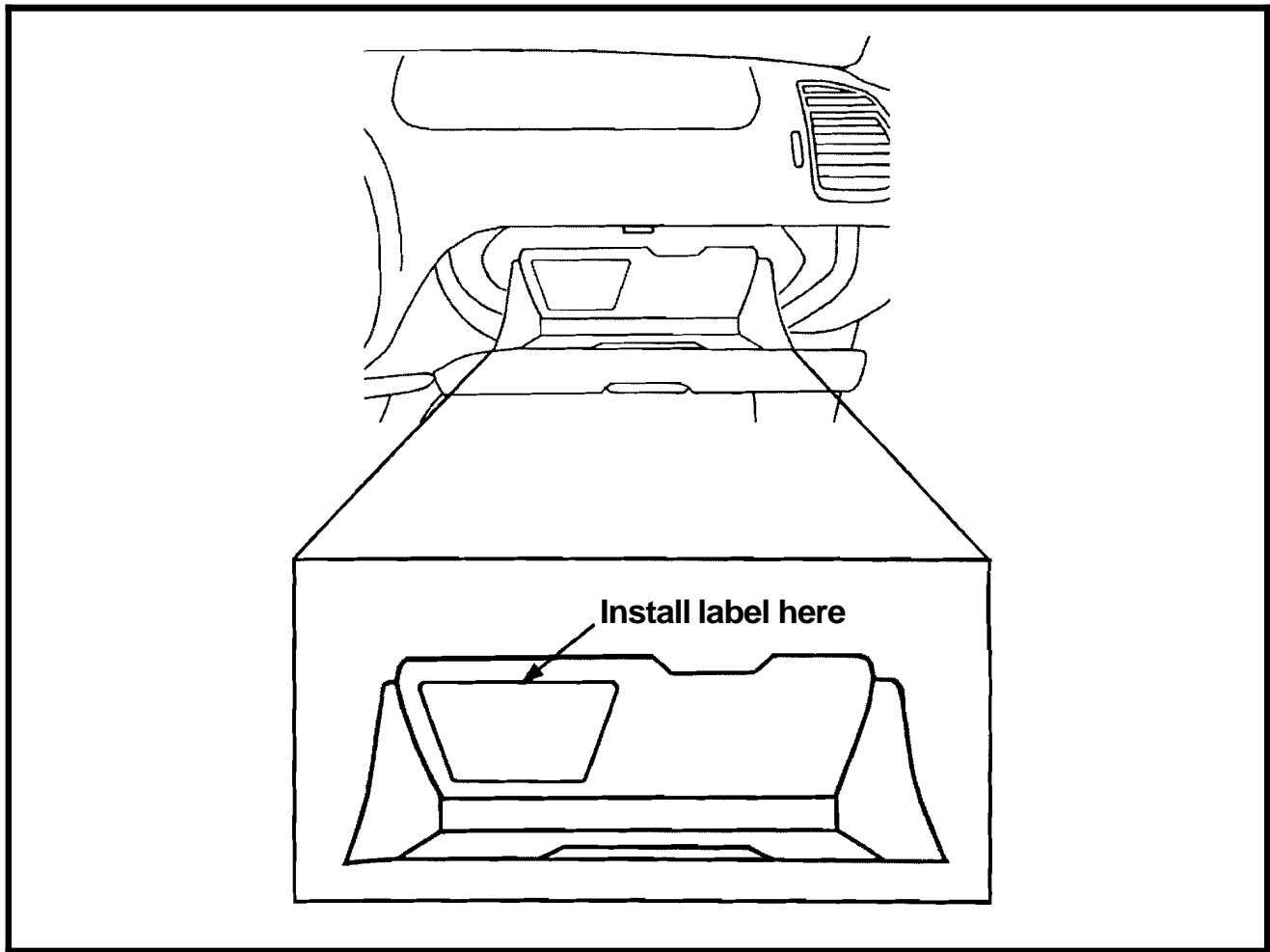
YES

- No further action required

NO

- Proceed to "**B. INSTALL THE CAUTION LABEL.**"

B. INSTALL THE CAUTION LABEL



- 1) Wipe the area where the caution label will be affixed with a clean, dry cloth to remove any dust or dirt.
- 2) Affix the label at the indicated location while smoothing out any air bubbles in the new label.