



Safety Recall Bulletin

Subject: Brake Air Line Joint Re-Torque

Date: 6/06/2005

Bulletin: R0008

Campaign #: M0010

Affected Models: (268A) NJ8T, (338)NV8J

Important: Verify on the Hino DCS Warranty System that the vehicle still needs to have this work performed.

Description: Hino Motors Sales U.S.A., Inc. has decided that a defect, which relates to motor vehicle safety, exists in certain 2005 and 2006 model year vehicles produced from October 2004 to April 2005. On specific vehicles equipped with air brakes the airbrake lines may become loose. This could result in a decrease in braking ability or the parking brake to apply without being activated, which could result in a crash. For detailed instructions on how to perform this Recall, see the attached instructions.

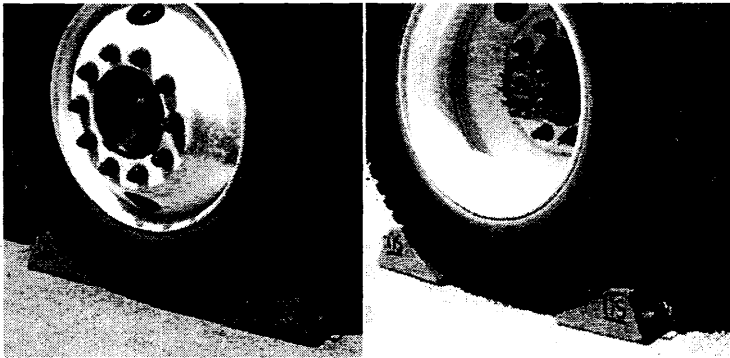
Stock Vehicles: Repair all stock vehicles before delivery

Parts Required: No Parts Required

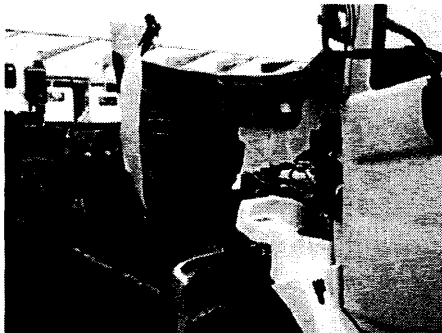
Flat Rate Allowed: 0.8 Hours



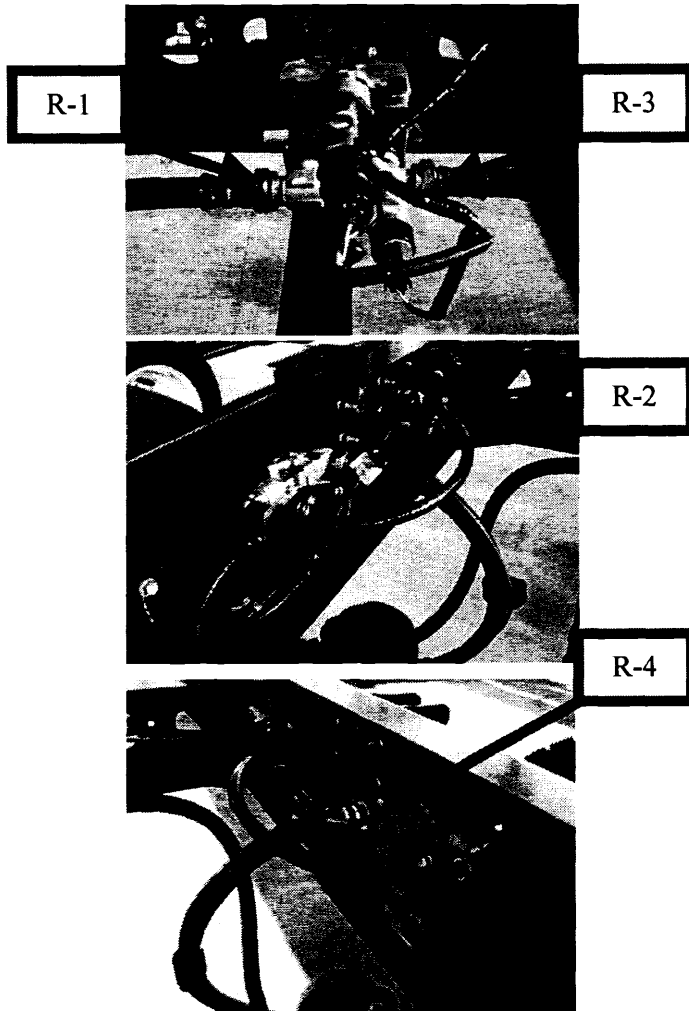
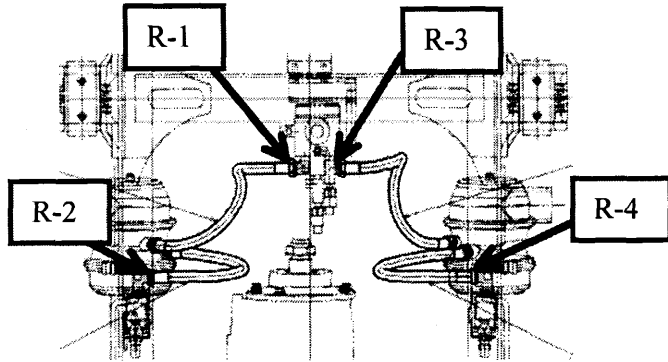
Park the vehicle on a flat surface.
Apply Emergency brakes
Remove the key from the ignition.



Secure the vehicle by placing wheel chocks in front and rear of the wheels.



Lift up the hood.



Rear Air Hose Joints

STEP ONE

- Locate the R-12DC Relay Valve.
- Loosen the connection of the air hoses located at the delivery ports of the R-12DC Relay Valve. **(R-3) and (R-1)**
- Torque the connection to 31 lbs. ft. using a 1 3/16 crowfoot wrench or a 30mm crowfoot wrench and an lbs ft torque wrench.
- When Torque procedure is completed mark the connection with white paint marker pen or equivalent.

STEP TWO

- Locate the ABS modulator valve inside the left frame-rail above the rear differential.
- Loosen the connection of the air hose located at the #2 delivery ports of the ABS Modulator Valve. **(R-2)**
- Torque the connection to 31 lbs. ft. using a 1 3/16 crowfoot wrench or a 30mm crowfoot wrench and an lbs ft torque wrench.
- When Torque procedure is completed mark the connection with white paint marker pen or equivalent.

STEP THREE

- Locate the ABS modulator valve inside the right frame-rail above the rear differential.
- Loosen the connection of the air hose located at the #2 delivery ports of the ABS Modulator Valve. **(R-4)**
- Torque the connection to 31 lbs. ft. using a 1 3/16 crowfoot wrench or a 30mm crowfoot wrench and an lbs ft torque wrench.
- When Torque procedure is completed mark the connection with white paint marker pen or equivalent.

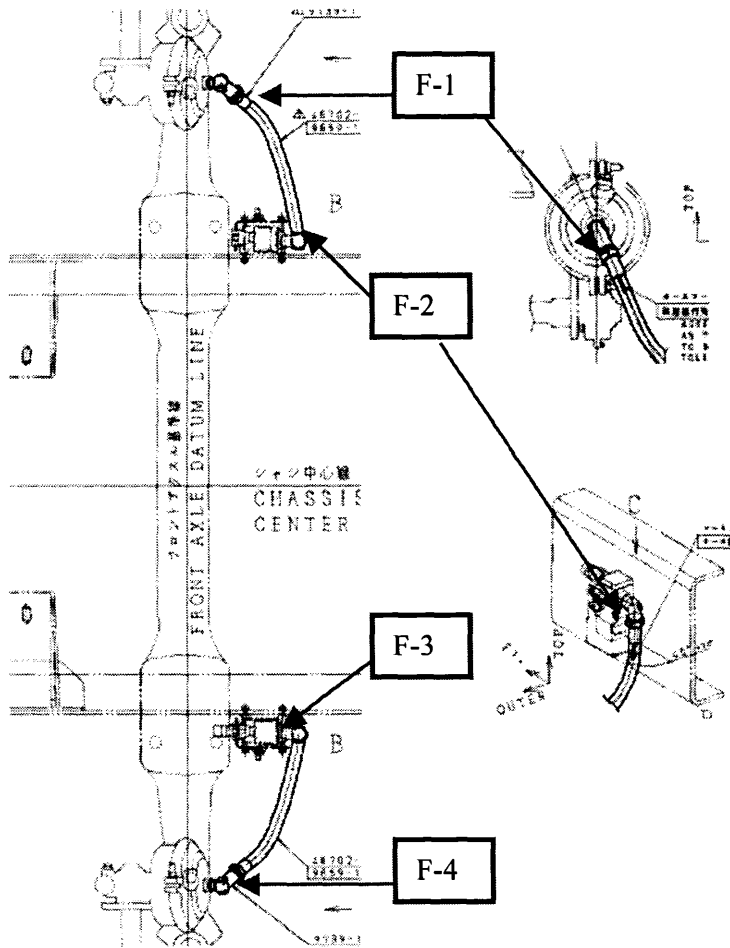
Specification:

- Torque: 31 ft. lbs

Diagram:

- (Shown as R1 thru R4)

The Photographs to the right are to be used to help identify the location of each nut.



Front Air Hose Joints

STEP FOUR

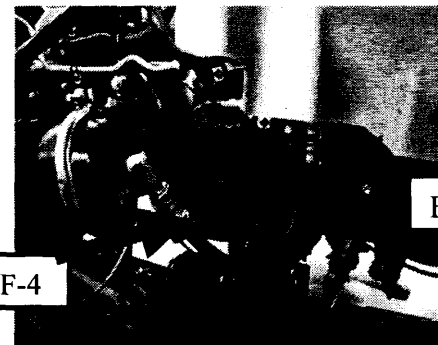
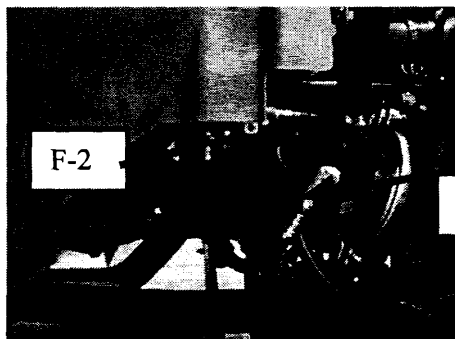
- Locate the Right front brake chamber.
- Loosen the connection of the air hose (F-1).
- Torque the connection to 31 lbs. ft. using a 1 3/16 crowfoot wrench or a 30mm crowfoot wrench and a lbs. ft. torque wrench.
- Locate the Right ABS Modulator Valve on the outside right frame-rail above the front axle.
- Loosen the connection of the air hose located at the #2 delivery ports of the ABS Modulator Valve. (F-2)
- Torque the connection to 31 lbs. ft. using a 1 3/16 crowfoot wrench or a 30mm crowfoot wrench and an lbs ft torque wrench.
- When Torque procedure is completed mark the connection with white paint marker pen or equivalent. .

STEP FIVE

- Locate the Left front brake chamber.
- Loosen the connection of the air hose (F-4).
- Torque the connection to 31 lbs. ft. using a 1 3/16 crowfoot wrench or a 30mm crowfoot wrench and a lbs. ft. torque wrench.
- Locate the Left ABS Modulator Valve on the outside right frame-rail above the front axle.
- Loosen the connection of the air hose located at the #2 delivery ports of the ABS Modulator Valve. (F-3)
- Torque the connection to 31 lbs. ft. using a 1 3/16 crowfoot wrench or a 30mm crowfoot wrench and an lbs ft torque wrench.
- When Torque procedure is completed mark the connection with white paint marker pen or equivalent. .

Diagram:
(Shown as F1 thru F4)

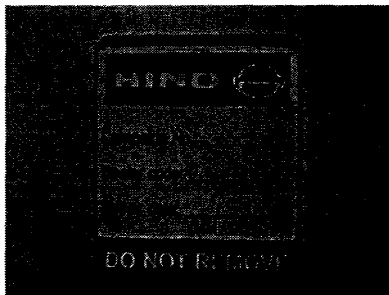
The Photographs below are to be used to help identify the location of each nut.





Close the hood slowly and secure the left and right hold down latches fully before operating the vehicle.

Remove chocks from in front and behind tires.



Fill out the Recall Completion sticker in the picture to the left. This sticker should be attached to the passenger side door jam above the V.I.N. Plate.