

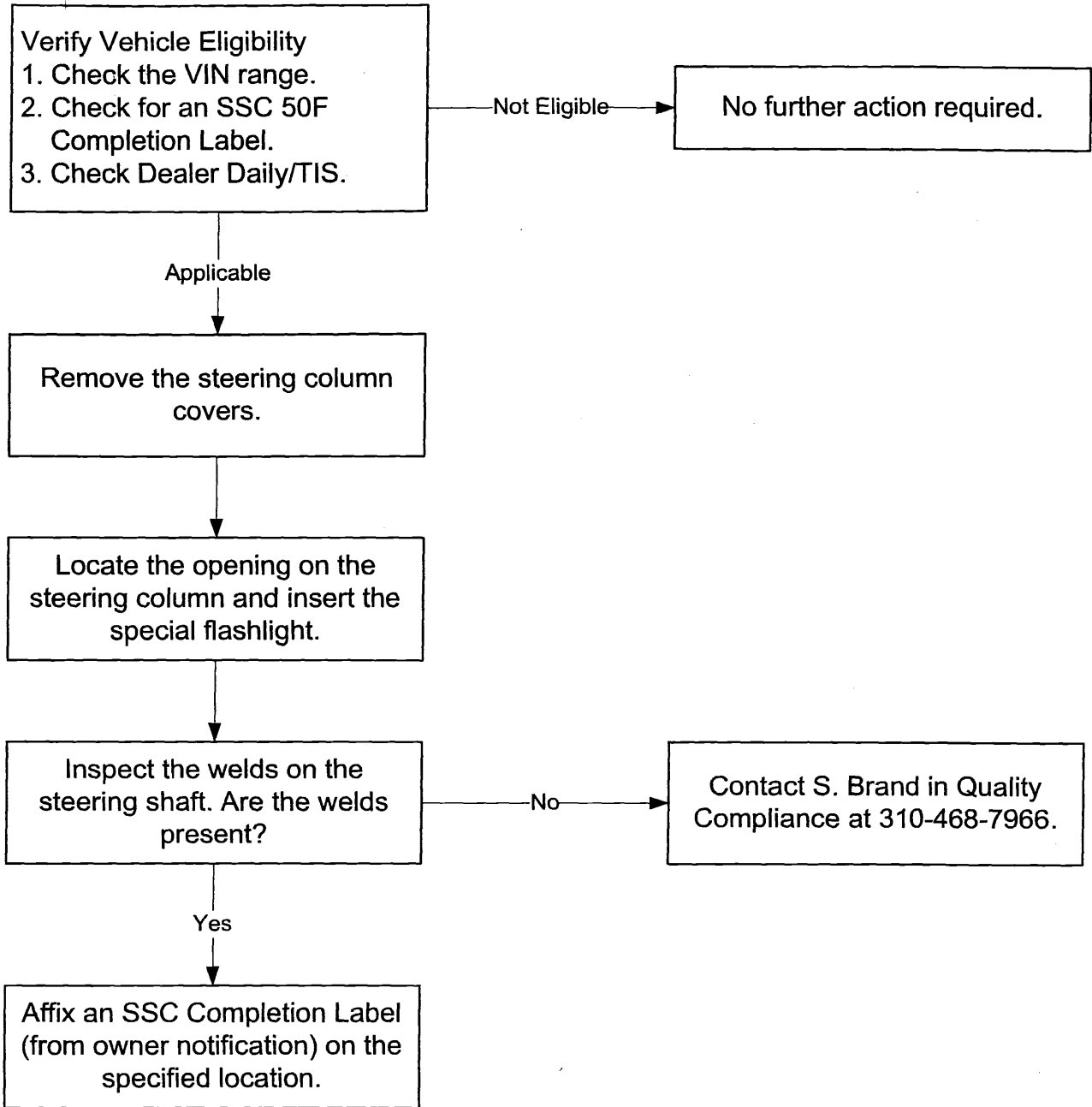
TECHNICAL INSTRUCTIONS

FOR

SPECIAL SERVICE CAMPAIGN 50F

2005 MODEL YEAR AVALON
STEERING COLUMN ASSEMBLY INSPECTION

I. OPERATION FLOW CHART



THE STEERING COLUMN INSPECTION PROCEDURE VIDEO IS AVAILABLE TO VIEW ON TIS. GO TO <http://tis.toyota.com> TO VIEW.

II. IDENTIFICATION OF AFFECTED VEHICLES

A. AFFECTED VIN RANGE

MODEL	YEAR	VIN Range	
		VDS	Range
Avalon	2005	BK36B	U001099 – U006875

NOTE:

Not all early 2005 Avalon vehicles in the VIN range are involved. As always, consult Dealer Daily/TIS to confirm VIN eligibility and to assure the SSC is applicable. This will verify the vehicle is affected and has not already been completed prior to dealer shipment or by another dealer. TMS warranty will not reimburse dealers for repairs conducted on vehicles that are not affected or were completed by another dealer.

III. PREPARATION

A. PARTS

No parts are necessary for this campaign.

B. TOOLS

- Standard hand tools
- Special Tool: A flexible flashlight (1 flashlight has been included in the Service Manager's Package).

IV. BACKGROUND

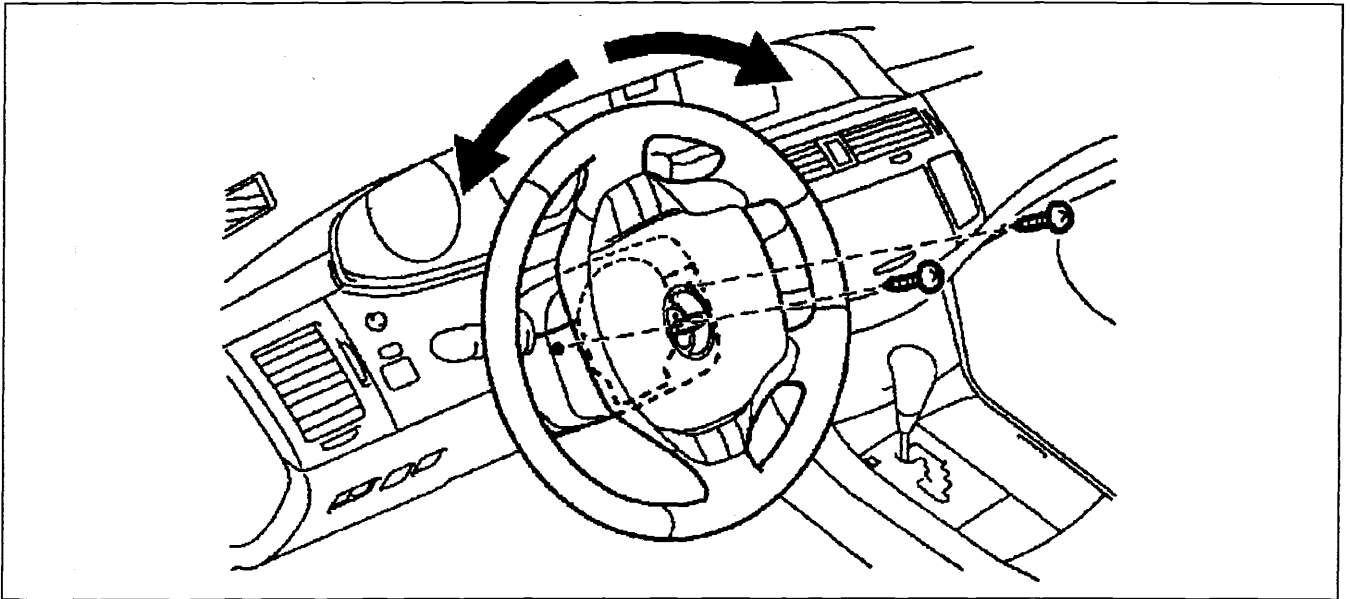
In a handful (less than three) of the early 2005 Model Year Avalon vehicles, there is a possibility that a portion of the steering column assembly may not have been welded correctly. The inspection procedure is to verify it is welded correctly.

V. WORK PROCEDURE

A. STEERING COLUMN ASSEMBLY INSPECTION

1. REMOVE THE STEERING COLUMN COVERS

- (a) With the steering wheel centered, turn the steering wheel 90° to the left and remove the screw.
- (b) Re-center the steering wheel, and turn the steering wheel 90° to the right and remove the screw.
- (c) Separate and remove the upper and lower steering column covers.



2. INSPECT THE STEERING SHAFT

- (a) Locate the opening on the steering column as shown in the illustration below, and insert the special flashlight.
- (b) Check that there are welds (see TIS video clip) present on the flat areas of each side of the shaft between the lower yoke and the tubular shaft, as shown in the illustration.

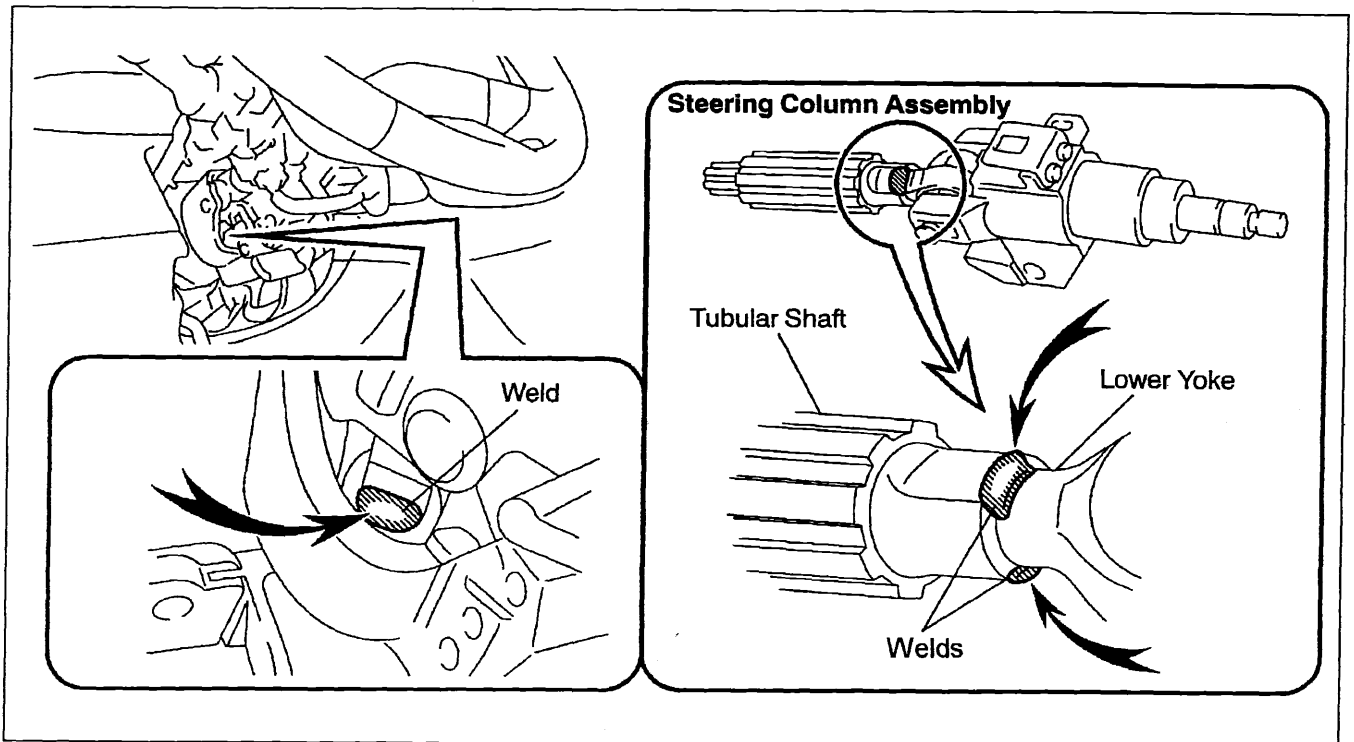
Weld marks are present:

- Steering column assembly is **OK**.
- Proceed to step "3. REINSTALL THE STEERING COLUMN COVERS."

Weld marks are missing:

- Steering column assembly is **NG**.
- Please call S. Brand in Quality Compliance at 310-468-7966.

A short instructional video on the inspection process can be viewed by clicking on: <http://tis.toyota.com>

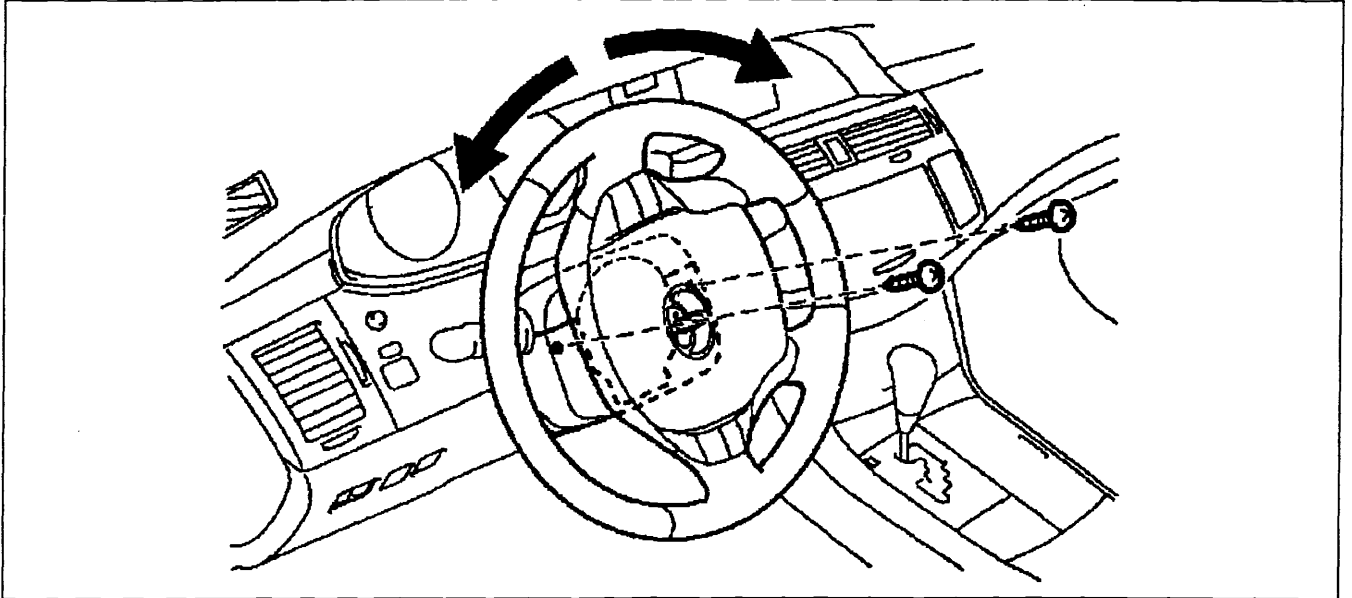


NOTE:

Steering columns that are replaced will be placed on Warranty Parts Recovery and dealers will be required to return the original parts to TMS for inspection. Parts that are not returned or were unnecessarily replaced will result in the claim being debited.

3. REINSTALL THE STEERING COLUMN COVERS

- (a) Reinstall and reconnect the upper and lower steering column covers.
- (b) With the steering wheel centered, turn the steering wheel 90° to the right and reinstall the screw.
- (c) Re-center the steering wheel, and turn the steering wheel 90° to the left and reinstall the screw.



VI. SSC COMPLETION LABEL INSTALLATION

After completing the repair and before returning the vehicle to the owner, an SSC completion label, which is enclosed in the owner's notification letter, must be affixed to the left front door hinge post, near the check strap.

(a) The label is to be filled out as follows:

- Write in SSC 50F.
- Write in date of repair.
- Write in your dealer code.

SSC	Date
DEALER CODE NO.	
00410-01917	

(b) Additional SSC completion labels, in sheets of 50 (P/N 00410-01917), may be ordered through the non-parts system on a 1450 order form or through the TDN system.