

**KEYSTONE RV COMPANY**

**RECREATIONAL VEHICLE SAFETY DEFECT SERVICE BULLETIN**

To: All Keystone RV Company Cambridge Dealers

Subject: Safety Recall: 05V-083  
Service Advisory: #05-053

Date: March 16, 2005

RE:

It has been determined that a defect may exist with the wiring of one or all of the dimmer switches on certain Cambridge units manufactured by Keystone through March 4, 2005. The last six (6) digits of the potentially affected Cambridge units are:

**580001-580088**

Our records indicate the unit(s) listed above are in your present lot inventory and will require immediate preventative action. Federal Law requires you to complete the recall service on the specified vehicles before retail delivery.

**~~Alert: Continued use of the unit without having the preventative actions completed immediately could lead to fire, personal injury or death.~~**

Claims for the units which have been serviced must be submitted. Claims submitted will be used by Keystone to record recall service completions and provide dealer payments.

Attached is a copy of the recall notification letter we have sent to the retail owners of these units. Also included is a copy of Service Advisory #05-053, which details how to remedy the situation and the proper reimbursement procedures.

We apologize for any inconvenience this situation may cause and greatly appreciate your cooperation. Should you have any questions or concerns regarding this correspondence or the attached Service Advisory, please feel free to contact Keystone's Customer Service Representatives at 866-273-1450.

Sincerely,

Keystone RV Company

Rick Deisler  
Customer Service Manager

cc. National Highway Traffic Safety Administration (NHTSA)

**SERVICE ADVISORY # 05-053**

**RECALL # 05V-083**

**Cambridge Dimmer Switch Wiring**

**Models Included:** 2006 Cambridge 361 RLS & 358 RLS

**Serial Number Range:** 580001 – 580088

**Parts Required per Unit:** Qty to be determined upon inspection results. Each vehicle has four dimmer switches. One of them is black and three of them have white knobs and covers. All the switches have a black body.

KRV # 168520 – Black Dimmer Switch

Note: For the white switches, re-use the existing white knob and white bezel cover over the black switch. There are no white switches.

**Tools Required:** #2 Square Screwdriver, Multi-meter, Wire Strippers

**It has been determined that the wiring for the dimmer switches may be incorrect on the models listed above. The following repair procedure describes how to INSPECT for the correct function of the dimmer switches and make any REPAIRS as needed.**

**INSPECTION**

- Step 1** Check each dimmer switch for correct function. Note: There are four dimmer switches in each unit. There is a black switch located by the electrical control panel. There is a white switch located by the bathroom sink and there are two white switches located in the bedroom slide-out.
- Step 2** Test the switch by turning it on and rotating the dimmer knob. Verify the lights: a) turn on b) light intensity increases and decreases with rotation of the dimmer c) turn off. If the switch functions correctly, there is not a problem. Please fill out a claim form as directed at the end of this Advisory.
- Step 3** If the switch does not function correctly, **the switch must be replaced and the wiring corrected.**

**CORRECTION**

- Step 1** Remove the switch and disconnect from the trailer wiring. Note: To remove the white switches, first carefully pry off the white bezel cover. It will need to be reused along with the white knob.
- Step 2** Each wire pair in the trailer consists of one 12-volt positive (colored) wire and another ground (white) wire. There will be a total of four wires (two pair) going to the switch. The colored positive wires may be of a different color, but the ground wires will always be white.

- Step 3** Use a multi-meter to determine which of the colored wires has 12-volt power coming from the power center to the switch. The wires without voltage present will be going to the lights.
- Step 4** Using a new switch, connect the wire pair with 12-volts present to the side of the switch marked "DC IN". The red wire on the switch goes to the colored positive 12-volt wire from the unit and the black wire on the switch goes to the white ground wire from the unit. See Figure 1 and 2.
- Step 5** Connect the other pair of wires to the "DC OUT" side of the switch. The colored wire from the unit goes to the red wire on the switch and the white wire from the unit goes to the white wire on the switch. See Figure 1 and 2.
- Step 6** Test the switch by turning it on and rotating the dimmer knob. Verify the lights:  
a) turn on b) light intensity increases and decreases with rotation of the dimmer c) turn off.
- Step 7** Repeat correction for each switch which does not function properly.

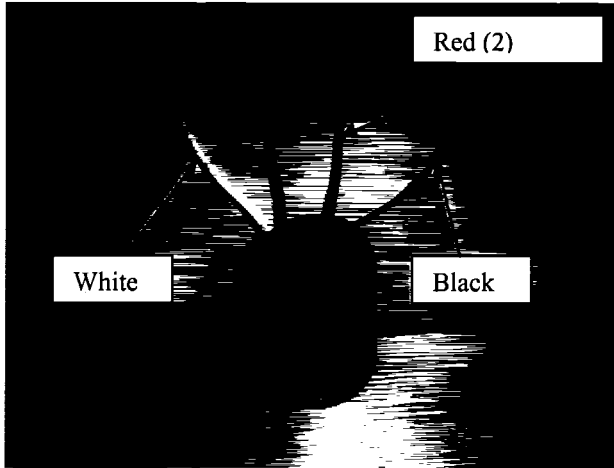


Figure 1

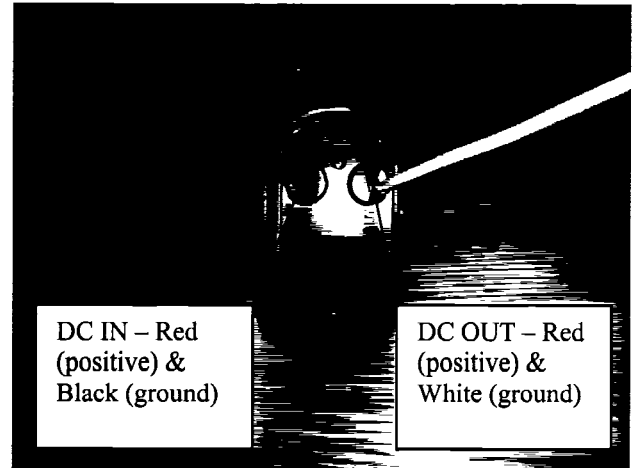


Figure 2

For Inspection only of the four switches functioning per unit, submit labor expense on a Keystone Warranty claim form with **Service Advisory # 05-053** and **Flat Rate Code #7105342F** noted in the customer complaint section of the form. The amount of time authorized for this repair is 0.3 hours per unit.

For each switch that is replaced submit an additional labor expense on a Keystone Warranty claim form with **Service Advisory # 05-053** and **Flat Rate Code #7105342B** noted in the customer complaint section of the form. The amount of time authorized for this repair is 0.3 hours per switch.

If you have any questions please call Keystone RV Customer Service at **(866) 273-1450**.