

Process Instruction for the Replacement of the Burner Tube

February 2005

These instructions are in reference to Safety Recall No. 05E-015

Webasto will allow 0.5 hours labor for each Burner Tube installed at the dealer's/ distributor's normal hourly rate. Handling charges should not exceed 20% of the dealer's net cost of parts.

Dealers may purchase replacement burner tubes directly from Webasto Product North America, Inc.

**Before beginning work on the heater, the main power cable has to be removed from the vehicle battery!
Do not work on a hot heater!**

A 10mm socket, extension and 1/4 drive ratchet or a long 10mm Tee-handle and socket combination is required. For full service instructions, a Service and Repair manual is available online at www.techwebasto.com by entering " http://www.techwebasto.com/heater_main/907502.pdf " into the address line of your web browser.

Before starting work, check if the heater is already marked. Corrected heaters are marked with a yellow dot on the control unit or on the front side of the burner head cover (black plastic) or in both places (see fig. 6 & 7).

Removing the heater from the vehicle is normally not necessary. For opening of heaters, both eyebolts of the housing are to be loosened (see fig. 1 & 2).

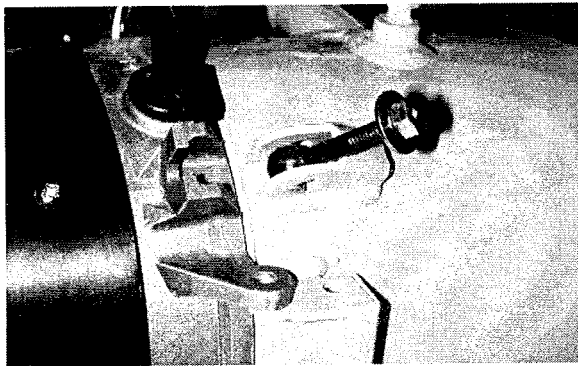


Figure 1.

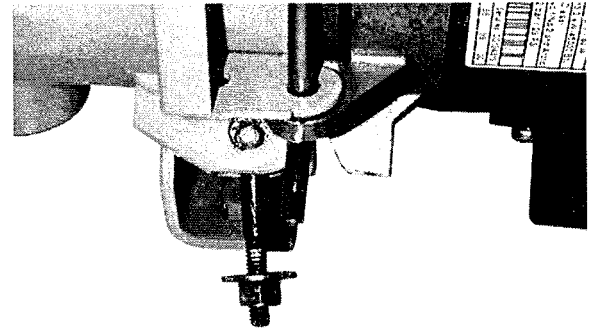
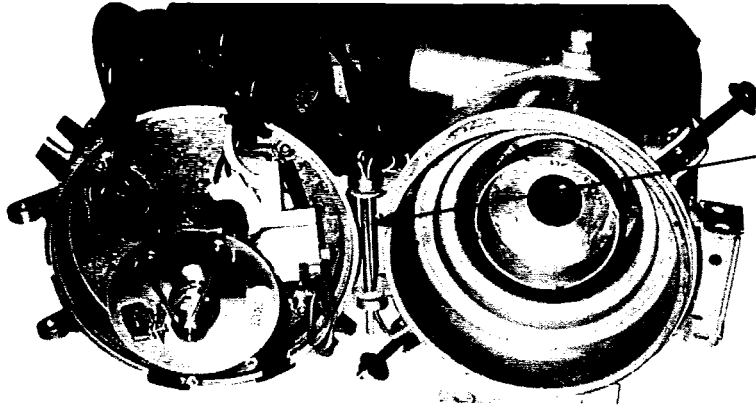
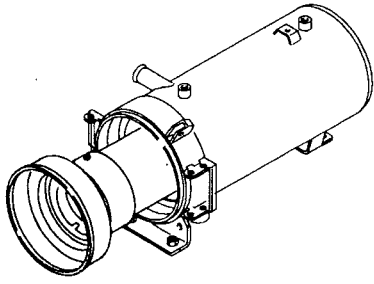


Figure 2.

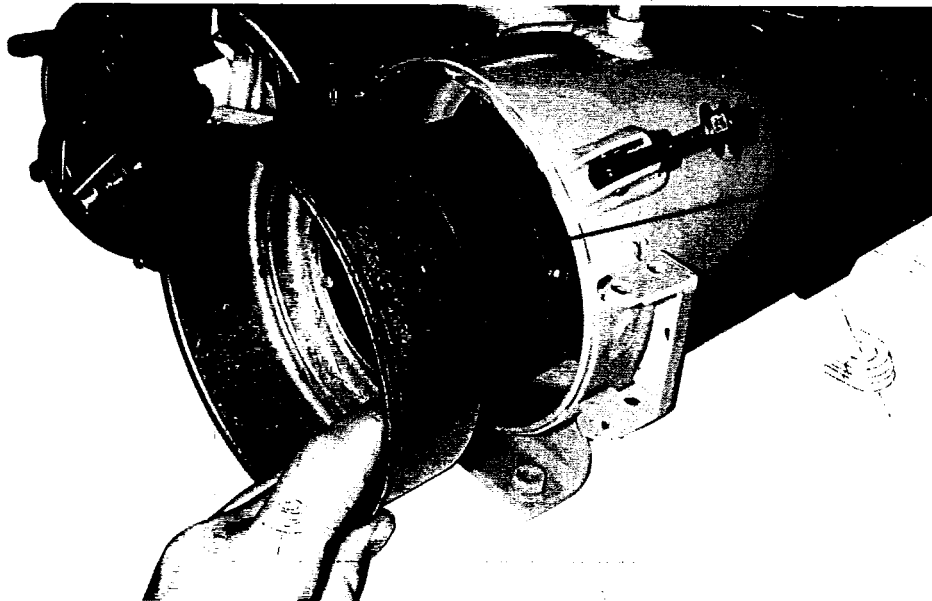
Once the burner head has been unlatched, swing it open to the side. If there is no clearance to do so, or there is a risk of damaging the wiring harness or fuel lines, the split pin can be either removed or inserted in the other side of the housing **before** loosening the eyebolts. If sufficient clearance cannot be gained, the burner head can be disconnected and be completely removed. **Beware not to damage the ignition electrodes (1) during the work. Further, take care not to change the screw position of the air intake bellows. This only happens if the adjusting screw is not properly tightened.**



Split pin part number 352497

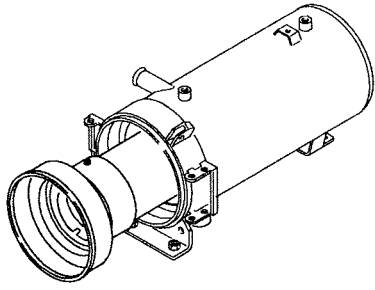
Figure 3.

The burner tube can now be carefully be pulled out (see fig. 4). If burner tube fit is very tight, use two screwdrivers to gently pry it evenly away from the heat exchanger. Mark the exchanged burner tube immediately with a thick red strip and send it to your Webasto branch or your Webasto representative. Do a visual check of the heat exchanger for damages. If necessary remove carbon deposits with a steel brush. Insert the new burner tube into the heat exchanger until it is fully seated. No further adjustment is necessary.



Replacement Burner Tube
part number 26553A

Figure 4.



February 2005

When reassembling the burner head to the heat exchanger the eyebolts and ears must be in the correct position during tightening (see fig. 1). **Tighten the eyebolts to a maximum of 4.0 Nm (35.5 lb/in.). Over-tightening could damage the casting. If the split pin was removed it must now be refitted.**

Once the burner head has been re-installed, make sure that all four grommets (2 right and 2 left) are in place. To minimize combustion air leakage, ensure grommets are fitted tightly around wire cables and fuel pipes. (see fig. 5).

In the case of the Scholastic Series heater with a **single line fuel system**, make sure the blank fuel pipe slot in the casting has a **solid (no hole) grommet** in place.

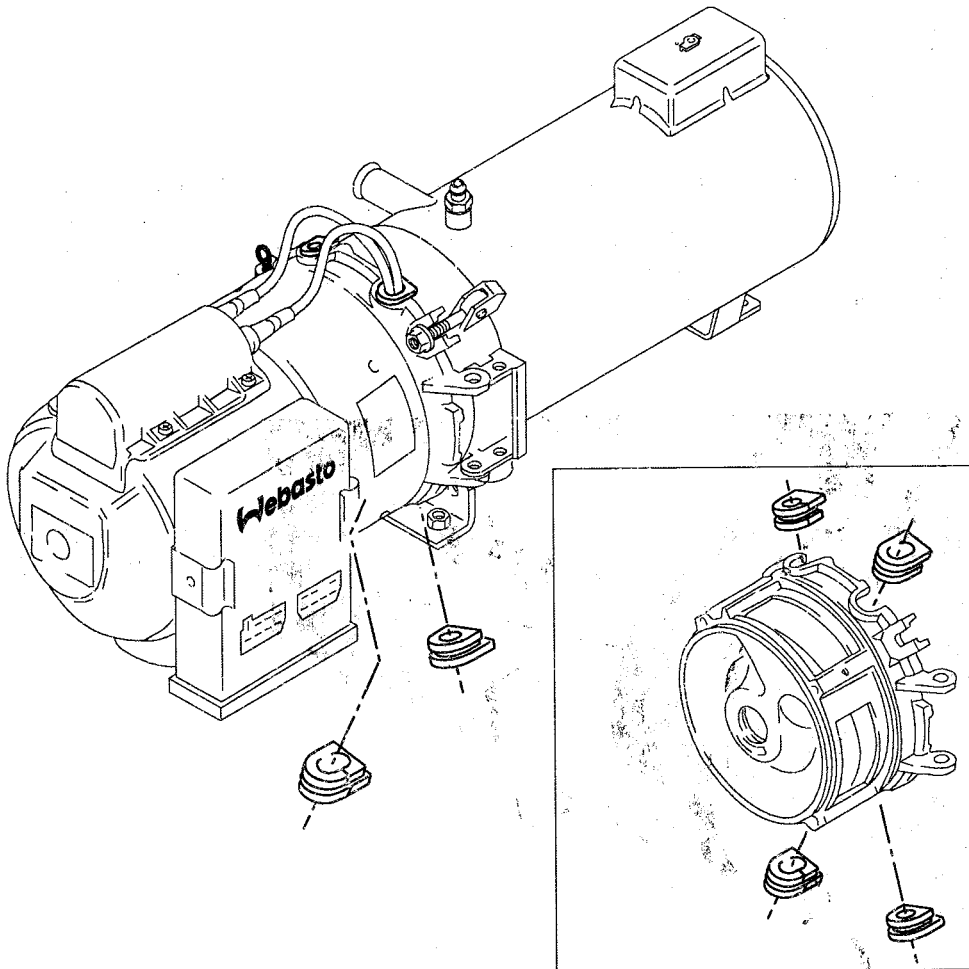
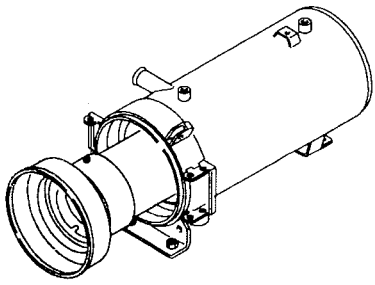


Figure 5.



February 2005

Place a water insoluble (permanent ink or paint) yellow dot, minimum $\varnothing 10\text{mm}$ (0.5 in.), on the control unit and on the front side of the burner head (see fig. 6 / 7) to identify corrected heaters.

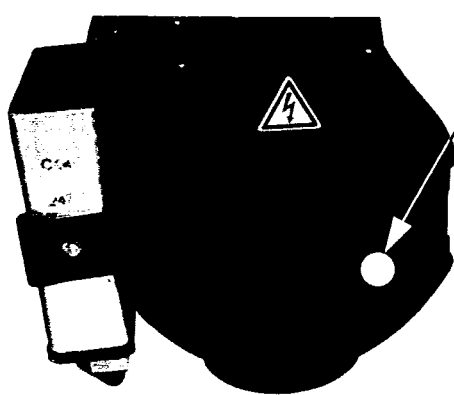


Figure 6.

Yellow dot min. $\varnothing 10\text{mm}$
(0.5 in.)

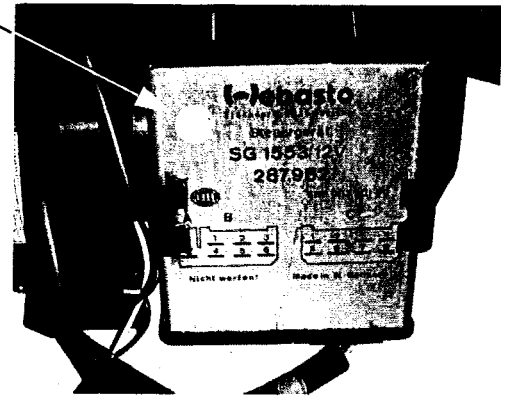


Figure 7.

After completing the correction a visual inspection and a test run of the heater must be performed according to the service instructions.

In case of technical questions or technical problems please call our hotline at: (800) 555-4518.

Removed Material Disposition

To obtain reimbursement for costs of parts, labor, handling and expenses associated with installing replacement burner tubes dealers should follow existing procedures for standard warranty. Webasto requires the return of the removed parts to Webasto in Fenton, Michigan. Upon submission of the claim, Webasto will issue a return goods authorization along with instructions for returning the parts.

Claims for Credit

Warranty claims for installing replacement burner tubes associated with this notice should contain the following information:

- Reference to NHTSA Campaign ID Number 05E-015
- The vehicle identification number (VIN)
- The heater serial number
- Date the service was provided
- The name, address and phone number of the repair facility

Please refer the Warranty Form sample (last page) for clarification.

