



IC Corporation

05V-368

751 South Harkrider, Conway, Ar 72302

## SAFETY RECALL 05518

October 2005

Dear IC Corporation Customer:

This notice is sent to you in accordance with the requirements of the National Traffic and Motor Vehicle Safety Act. IC Corporation has decided that a defect which relates to motor vehicle safety exists in certain **driveline park brakes** of CE Bus models built between 6/4/2004 and 3/31/2005.

The vehicle identified on the enclosed card fits this description and our records show that you own this vehicle. Federal regulations require that any vehicle lessor receiving this recall notice must forward a copy of this notice to the lessee within ten days.

### REASON FOR THIS RECALL

The anchor bolt that is the pivot point for the driveline parking brake shoes may fatigue and break.

### RISK TO MOTOR VEHICLE SAFETY

If the bolt breaks, the park brake may not engage. This could cause the vehicle to **roll away, without warning** and could result in a **vehicle crash** possibly resulting in **property damage, personal injury or death**.

### ACTION YOU SHOULD TAKE

1. **Our records show that you are the owner** of the vehicle identified on the enclosed card. **If you are not the owner**, please read paragraph number 6.
2. If you would like your IC dealer to make this repair for you at no cost, **please contact your local IC dealer**, with your green recall card in hand, to schedule an appointment to have your vehicle repaired.

If you are repairing the vehicle yourself, please follow the instructions outlined in the "Repair Procedure" section below. Fill out and return the enclosed green card with box # 8 checked (Send Parts) and our Compliance Department will have the parts shipped directly to you at no charge. Please verify that your shipping address is correct. A Post Office Box (P.O. Box) number for shipping is not acceptable. We must have a street or road address. You may also obtain these parts by faxing a request to 1-501-505-2433 or emailing to [Kathy.anders@ic-corp.com](mailto:Kathy.anders@ic-corp.com). The last eight characters of the VIN of each unit to be repaired must be included.

3. IC dealers will have parts and instructions to make the repair available to them by **10/15/2005**. The repair will be performed without charge to you and will take approximately 1 hour.
4. If your local IC dealer performs the repair, they will submit a warranty claim; therefore, you **DO NOT** have to mail in the campaign card.
5. If the **vehicle cannot be corrected**, please mark on the enclosed card under "CHECK ONE" the box which best describes why the vehicle can not be repaired, and return the postage-prepaid card to us.
6. **In the event you do not own the vehicle** described on the card, please complete the card, fill in the new customer name and address if known, write "Do Not Own" clearly on the card, and return it to us. This information will allow us to update our records so we can contact the new owner and you will not be contacted again regarding this recall.

## **RECALL CLAIMS**

### **For Repairs Performed By Customer or Non-Authorized IC Dealers**

To assist in processing the recall, it is important that you provide an invoice with the following information.

**VIN #**

**Recall Campaign #05518 & Subject [Anchor Bolt, Park Brake]**

**Facilities Repair Labor Rate**

**Labor Operation Number**

**Your Tax ID Number**

All correspondence must be returned to:

IC Corporation  
PO Box 6000  
Conway, Arkansas, 72033  
Attn: Compliance Department.

## **REIMBURSEMENT OF REPAIRS**-COMPLETED PRIOR TO THE RELEASE OF THIS RECALL

If you paid to repair your vehicle for this defect prior to receiving this recall letter, you may be eligible for reimbursement of the repair costs if the costs were incurred between 10/1/2004 and 10/31/2005. Contact your local IC dealer, with your original repair documentation and proof of payment, and the service advisor will determine what if any of the repair costs will qualify for reimbursement. IC dealers determine what repair costs are eligible for reimbursement. However, if you choose not to work through an IC dealer, you may submit the enclosed "REQUEST FOR REIMBURSEMENT" form, repair documentation, and proof of payment to:

International Truck and Engine Corporation  
Warranty Claim Center Reimbursement Department  
P.O. Box 888  
Warrenville, IL 60555

## **IF YOU NEED ASSISTANCE**

If you take your vehicle to your dealer on a mutually agreed upon service date, and the dealer does not remedy this condition without charge on that date or within five days, you can obtain assistance by following the procedure described in the Owner Assistance Guide section in your Owner's Manual or by calling toll free 1-800-448-7825.

You may also wish to submit a complaint to the Administrator, National Highway Traffic Safety Administration, 400 Seventh Street, S.W., Washington, D.C., 20590, or call the toll-free Vehicle Safety Hot-Line at 1-888-327-4236 (TTY:1-800-424-9152); or go to <http://www.safercar.gov> if your International dealer fails to repair or is unable to remedy this condition without charge or within a reasonable time.

We request your prompt attention to the correction of this defect and apologize for any inconvenience this may cause you.

## **PARTS INFORMATION**

The correct parts and number of parts, based on your VIN or VINs, will be shipped to you upon request if you are completing the repairs yourself.

See *Actions You Should Take - step #2*. If your local IC Dealer is completing the repairs, they will order the required parts.

## **SERVICE PROCEDURE**



**WARNING:**

***TO PREVENT SERIOUS EYE INJURY, ALWAYS WEAR SAFE EYE PROTECTION WHEN YOU PERFORM VEHICLE MAINTENANCE OR SERVICE.***



**WARNING:**

***TO PREVENT UNEXPECTED MOVEMENT OF THE VEHICLE AND POSSIBLE SERIOUS PERSONAL INJURY OR DEATH, BLOCK THE WHEELS TO PREVENT THE VEHICLE FROM MOVING IN BOTH DIRECTIONS.***

### ***PARK BRAKE DATE CODE INSPECTION PROCEDURE***

Please follow the attached park brake repair procedure to determine if park brake anchor bolt replacement is required.

Please ensure date code on park brake assembly is within the specified range before replacing the anchor bolt.

### ***ANCHOR BOLT REPLACEMENT PROCEDURE***

Please follow the attached anchor bolt replacement procedure for replacing the anchor bolt.

**END OF SERVICE PROCEDURE**

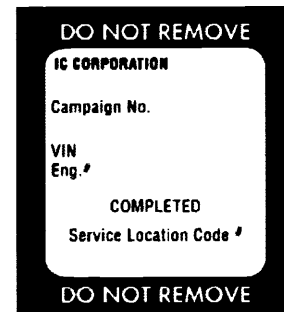
## **LABOR INFORMATION**

<b><u>Operation No.</u></b>	<b>Description</b>	<b><u>Time</u></b>
A40-05518-1	<b><i>INSPECTION of Park Brake Date Code – NO ANCHOR BOLT REPLACEMENT</i></b>	0.3 hr
A40-05518-2	<b><i>Inspection AND Replacement of Anchor Bolt</i></b>	0.9 hr

## **CAMPAIGN IDENTIFICATION LABEL**

*Each vehicle corrected in accordance with this campaign **must be** marked with a S00109 Campaign Identification Label.*

Complete the label and attach on a clean Surface next to the vehicle identification number (VIN) plate.



This label has been shipped with your letter.

### **IMPORTANT**

In the event you no longer own the vehicle described, please fill in the requested information on the enclosed postage-prepaid card and return it to us. This information will allow us to notify the correct owner.

**IC Corporation**



INTERNATIONAL TRUCK AND ENGINE CORPORATION  
4201 WINFIELD ROAD, WARRENVILLE, IL 60555

OSV-368

TRUCK GROUP

## SAFETY RECALL 05518

October 2005

Dear International Customer:

This notice is sent to you in accordance with the requirements of the National Traffic and Motor Vehicle Safety Act. International® has decided that a defect which relates to motor vehicle safety exists in certain **driveline park brakes** of 1300 FBC, 3200, 3300, 4200, 4300 and 4400 models vehicles built between 6/4/2004 and 3/31/2005. The vehicle identified on the enclosed card fits this description and our records show that you own this vehicle. Federal regulations require that any vehicle lessor receiving this Recall notice must forward a copy of this notice to the lessee within ten days.

### REASON FOR THIS RECALL

The anchor bolt that is the pivot point for the driveline parking brake shoes may fatigue and break.

### RISK TO MOTOR VEHICLE SAFETY

If the bolt breaks, the park brake may not engage. This could cause the vehicle to **roll away, without warning** and could result in a **vehicle crash** possibly resulting in **property damage, personal injury or death**.

### ACTION YOU SHOULD TAKE

1. Our records show that you are the owner of the vehicle identified on the enclosed card. **If you are not the owner, please read paragraph number 6.**
2. **Please contact your local International dealer**, with your recall card in hand, to schedule an appointment to have your vehicle repaired.
3. Dealers will have parts and instructions to make an inspection or repair by **10/15/2005**. The inspection will be performed without charge to you and will take approximately **an hour (1.0 hours)**.
4. If your local International dealer performs the repair, they will submit a warranty claim; therefore, you **DO NOT** have to mail in the campaign card.

5. **If the vehicle cannot be corrected**, please mark on the enclosed card under "CHECK ONE" the box which best describes why the vehicle can not be repaired, and return the postage-prepaid card to us.
6. **In the event you do not own the vehicle** described on the card, please complete the card, fill in the new customer name and address if known, and return it to us. This information will allow us to update our records so we can contact the new owner and you will not be contacted again regarding this recall.

**REIMBURSEMENT OF REPAIRS COMPLETED PRIOR TO THE RELEASE OF THIS RECALL**

If you paid to repair your vehicle for this defect prior to receiving this recall letter, you may be eligible for reimbursement of the repair costs if they were incurred between 10/1/2004 and 10/31/2005. Contact your local International dealer, with your original repair documentation and proof of payment, and the service advisor will determine what if any of the repair costs will qualify for reimbursement. International dealers determine what repair costs are eligible for reimbursement. However, if you choose not to work through an International dealer, you may submit the enclosed "REQUEST FOR REIMBURSEMENT" form, repair documentation, and proof of payment to:

International Truck and Engine Corporation  
Warranty Claim Center Reimbursement Department  
P.O. Box 888  
Warrenville, IL 60555

**IF YOU NEED ASSISTANCE**

If you take your vehicle to your International dealer on a mutually agreed upon service date, and the dealer does not remedy this condition without charge on that date or within five days, you can obtain assistance by following the procedure described in the Owner Assistance Guide section in your Owner's Manual or by calling toll free 1-800-448-7825.

You may also wish to submit a complaint to the Administrator, National Highway Traffic Safety Administration, 400 Seventh Street, S.W., Washington, D.C., 20590, or call the toll-free Vehicle Safety Hot-Line at 1-888-327-4236 (TTY:1-800-424-9152): or go to <http://www.safercar.gov> if your International dealer fails to repair or is unable to remedy this condition without charge or within a reasonable time.

We request your prompt attention to the correction of this defect and apologize for any inconvenience this may cause you.

**INTERNATIONAL TRUCK AND ENGINE CORPORATION**