



A Subsidiary of **FREIGHTLINER**  
LLC

February 10, 2006

Recall 05V-284

Thomas Built Buses, Inc.  
PO Box 2450 (27261)  
1408 Courtesy Road  
High Point, NC 27260  
(336) 889-4871 Phone  
(336) 889-2689 Fax

Dear Thomas Bus Owner,

This notice is sent to you in accordance with the requirements of the National Traffic and Motor Vehicle Safety Act. Based on information provided by Holland USA, Thomas Built Buses, Inc. has decided that a defect, which relates to motor vehicle safety, exists in the vehicle identified on the enclosed postcard (Form PSD 304).

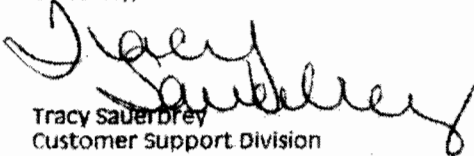
This recall involves certain Thomas Built units manufactured from January 2004 through December 2004 with certain Holland suspensions. Some of the transverse beam castings were not made to specification and may fracture under normal loads. If a casting breaks while the unit is in motion there is the potential for pieces of the casting to become projectiles and the suspension's transverse beam may drop low enough to contact the road surface causing sparks that could potentially ignite a fire.

You should immediately contact your Thomas Built Buses dealer for an appointment to have your vehicle modified. Thomas Built Buses will remedy this defect without charge. It will take approximately 1.5 hours per unit for the repair. To arrange for repairs, contact your local Thomas Built Buses dealer. After the repair is made, please complete each postage paid card separately and return it to Thomas Built Buses to verify completion.

In addition to being used to verify repair completion, the postcard must be completed and returned if the vehicle does not need repair, if you no longer own the vehicle, or the vehicle identified on the postcard has been exported, stolen, or destroyed/totaled. Federal law requires that any vehicle lessor receiving the recall notice must forward a copy of this notice to the lessee within 10 days.

If the defect is not remedied without charge and within a reasonable time, which is not longer than 60 days after you tender the vehicle for repair, please contact the Customer Support Office at (336) 889-4871, 8 a.m. to 5 p.m. eastern standard time Monday through Friday, e-mail address [Tracy.Sauerbrey@Thomasbus.com](mailto:Tracy.Sauerbrey@Thomasbus.com). You may also submit a complaint to the Administrator, National Highway Traffic Safety Administration, 400 7<sup>th</sup> Street S.W., Washington, DC 20590, or phone 1-888-327-4236 (TTY: 1-800-424-9153) or go to <http://www.safercar.gov>. If your vehicle is involved in the Canadian portion, you may notify the Manager, Recall and Public Compliance, Road and Motor Vehicle Traffic Safety Branch, Transport Canada, Ottawa, Ontario or phone (613)-993-9851.

Sincerely,



Tracy Sauerbrey  
Customer Support Division

/s  
Enclosures      Postcard

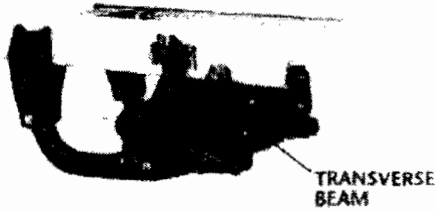
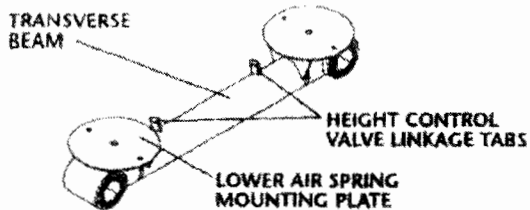


Figure 1



**IMPORTANT:**  
**DO NOT DESTROY THE BOX THAT THE NEW TRANSVERSE BEAM IS SHIPPED IN.**

**THE BOX WILL BE RE-USED TO RETURN THE OLD TRANSVERSE BEAM TO HOLLAND.**

#### TIME REQUIRED

Holland recommends a maximum of 1.5 hours per axle for the transverse beam replacement procedure.

#### TOOLS REQUIRED

1. Torque Wrench - minimum 600 ft. lb. capacity
2. Torque Wrench Extension (for leverage)
3. 3-1/2" socket for 2-1/4" Heavy Hex Nut

**NOTE:** Use of pneumatic impact guns is not recommended for removal or installation of the Heavy Hex Nut.

## TRANSVERSE BEAM REPLACEMENT AND RETURN PROCEDURE MANUAL

**NEW, V AD Series Air-Ride Suspensions**

#### Special Replacement T-Beam Kit

##### Part Numbers

48100435  
48100436  
48100437  
48100438  
48100439

#### Kit Contents

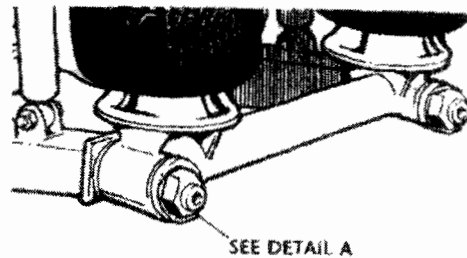
- 1 - T-Beam with Bushings
- 1 - Fastener Kit
- 1 - Procedure Manual / Return Tags / Return Labels

### CLEANING PRIOR TO DISASSEMBLY

1. Clean the fasteners and pin shafts of the Transverse Beam connections prior to disassembly to help protect the threads.
2. Clean out the space between the Pin Shaft and the Heavy Hex Nut to remove dirt and debris. A piece of wire can help loosen trapped debris (Figures 2 and 4).

**CAUTION** Always wear safety glasses when working on the suspension or eye injuries may occur.

Figure 2



DETAIL A



## TRANSVERSE BEAM REPLACEMENT

### REMOVING THE TRANSVERSE BEAM

1. It is recommended the vehicle be unloaded and wheels properly chocked prior to Transverse Beam replacement. Be sure you have adequate clearance beneath the vehicle to perform the work.

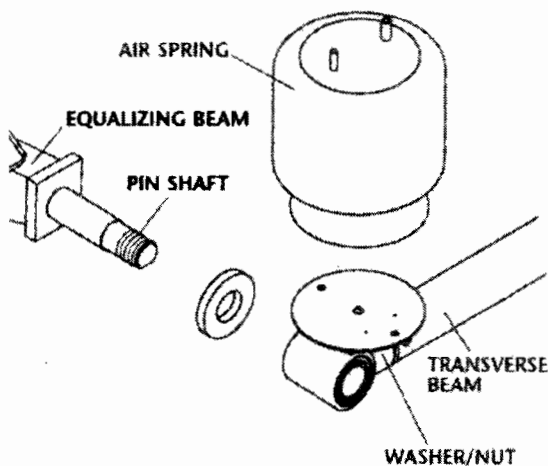
Raise vehicle's frame 2" above its standard ride height and support with adequate jack stands.

Note that the height control valves can be used to raise the vehicle.

**▲WARNING** Always use jack stands of sufficient strength and position them according to OEM recommendations. Failure to do so may cause the vehicle to fall, resulting in vehicle damage and/or personal injury.

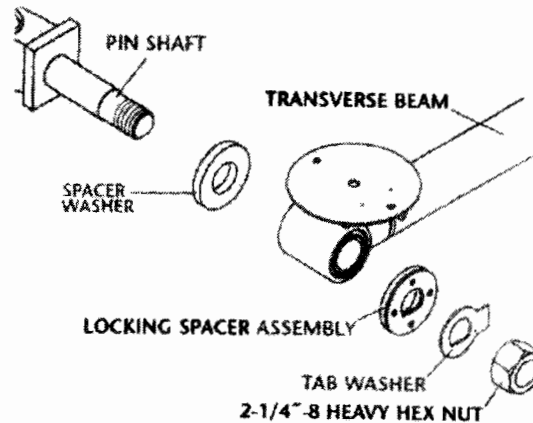
2. Exhaust the air in the air springs and air system using the manual dump valve (if vehicle is so equipped) or by using the height control valve(s). To exhaust the air using the height control valves, disconnect the valves linkage at the lower connection. Then rotate the valve's control arm down to the air exhaust position.
3. With the air exhausted from the air springs, remove the air springs from the Lower Air Spring Mounting Plate by removing the nut and washer located under the mounting plate (Figure 3). Save this hardware for re-installation.

Figure 3



4. With the air springs disconnected, you can now remove the Transverse Beam. This is accomplished by removing the Heavy 2-1/4" Hex Nuts located at the end of each equalizing beam (Figure 4).

Figure 4



5. With the Heavy Hex Nuts, Tab Washers, and Locking Spacer Assemblies removed, the Transverse Beam can now be removed from the ends of the Pin Shafts. Be sure to note the orientation of the Linkage Tabs welded to the top of the Transverse Beam (Figure 1). These may be used for mounting the linkage that controls the Height Control Valves. You'll want to orientate the tabs on the replacement Transverse Beam into the same position(s) if the tabs are used for this purpose. If the Transverse Beam Bushings remain on the Pin Shaft, use a screwdriver or small chisel to separate the metal bushing core. This bushing is a split design to facilitate removal.
6. Be sure to save the large Spacer Washer located behind the Transverse Beam ends. This washer will be needed for re-installation of the replacement Transverse Beam.
7. Clean the exposed Pin Shafts to remove any rust left behind from the metal bushing cores, plus any other dirt and debris. The Pin Shafts and their threads are Dacromet coated during manufacturing. Dacromet is a hard, silver-colored coating that protects the Pin Shafts from rust. Most of the Pin Shafts that will be encountered during the replacement are also painted. This paint serves no purpose and is only there due to our paint dip process. Paint that is scratched, chipped or removed is of no concern since the underlying Dacromet coating is the primary protection for the pin shaft.

## INSTALLING THE REPLACEMENT TRANSVERSE BEAM

8. Once the Pin Shaft is clean, replace the Spacer Washers (saved from Step 6.), one over each Pin Shaft. Now install the replacement Transverse Beam over the Pin Shafts. The replacement Transverse Beam already has new bushings pressed into the ends. Be sure to orientate the Linkage Tabs on the Transverse Beam in the up position (*Figure 1*). Also check for the proper orientation of these tabs as described in Step 5.
9. With the Spacer Washers and Transverse Beam installed over the Pin Shafts, install the new fasteners provided in the Fastener Kit that comes with each replacement Transverse Beam.  
**First**, install a new Locking Spacer Assembly over each Pin Shaft.  
**Second**, install a new Tab Washer over each Pin Shaft.  
**Third**, make sure that the Pin Shaft threads are clean and then install the new Hex Nuts. There is no need to lubricate the threads prior to installing the nut. The Dacromet coating on the threads reduces friction; treat the connection as non-lubricated.
10. Torque the Hex Nuts to 550 ft. lbs. (745 Nm). **Do not** use an air impact wrench for applying the final torque to the connection; rather, use a torque wrench of the appropriate capacity. A "cheater bar" may be needed to generate sufficient torque with the wrench.
11. With a hammer, bend the tab portion of the Tab Washer over the Hex Nut.
12. Reinstall the air spring to the Lower Air Spring Mounting Plate using the washer and nut removed in Step 3. Torque nut to 30 ft. lbs. (40 Nm). If the air spring has more than one mounting stud protruding through the mounting plate, install the washer and nut to the rear-most stud only. Reconnect any Height Control Valve linkages as necessary.

Once the replacement is complete and the vehicle is started, allow the system to air-up and then check for the proper ride height.

Upon completing the Transverse Beam installation, no realignment to the axle is required due to replacement of the Transverse Beam.

## TRANSVERSE BEAM RETURN INSTRUCTIONS

Holland requests that all Transverse Beams removed as a result of this recall be returned to Holland for registration and disposal. Please re-use the box from the replacement beam for this return shipment. Easy to use tags and labels are provided in the Instructions Envelope. Shipping is pre-paid so there is no cost to you for the return shipment.

Follow these steps:

1. Remove the red registration tag from the Information Envelope. Complete the tag by printing the requested information on the tag. With the information complete, firmly attach the tag to the old beam using the wire.
2. Place the tagged Transverse Beam into the box that the new beam was shipped in. Securely tape, strap or staple the box closed for return shipment.
3. Label the box with one of the three shipping labels provided in the Information Envelope.
  - For return shipments originating in the U.S., use the Muskegon, Michigan shipping label.
  - For return shipments originating in Canada, use one of two shipping labels, depending on which Canadian return center is closest to your location, Surrey, BC or Woodstock, Ontario.Remove the backing from this self-adhering label and place it over the original shipping label.
4. Once the box is securely sealed and labeled, contact Evans Transportation Services toll free at 1-800-886-7799 to arrange for the return shipment. Please reference Holland Campaign # RC321 when making shipping arrangements with Evans. Return shipments are pre-paid by Holland.

## HOLLAND INFORMATION SOURCES

For direct Holland assistance regarding recall related inquiries between the hours of 8am - 5pm Eastern Standard Time.

### For Holland Customer Service:

Phone toll free 1-888-396-6501 and ask for Kay Duram at ext. 8555.

### For Holland Technical Service:

Phone toll free 1-888-396-6501 and ask for the Tech Group.

Recall information is also located on our web site at [www.thehollandgroupinc.com](http://www.thehollandgroupinc.com).

HOLLAND GROUP, INC.  
487 Ottawa Avenue • P.O. Box 2088 • Holland, MI 48422-2088  
Phone 888-396-6501 • Fax 800-356-3928  
[www.thehollandgroupinc.com](http://www.thehollandgroupinc.com)

Copyright © May 2005 • The Holland Group, Inc.

#### Holland USA, Inc.

Muskegon, MI  
Phone: 816-396-6501  
Fax: 816-396-1511

#### Holland Hitch of Canada, Ltd.

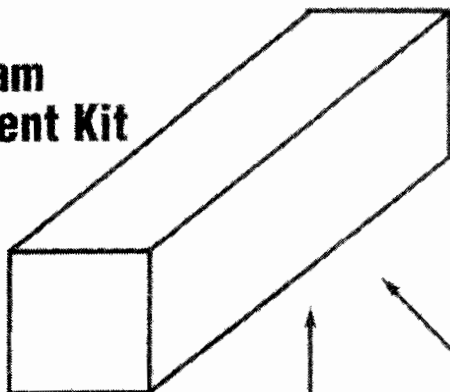
Woodstock, Ontario • Canada  
Phone: 519-537-3494  
Fax: 800-565-7793

#### Holland Hitch Western, Ltd.

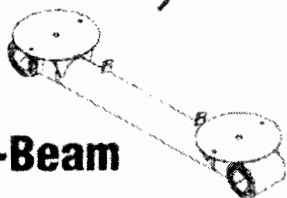
Surrey, British Columbia • Canada  
Phone: 804-574-7491  
Fax: 804-574-0244



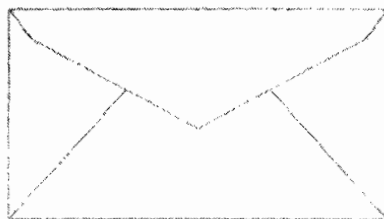
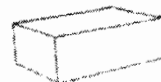
# T-Beam Replacement Kit



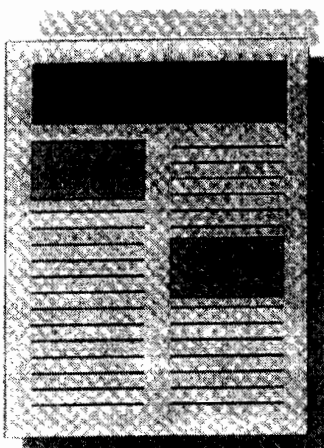
**T-Beam**



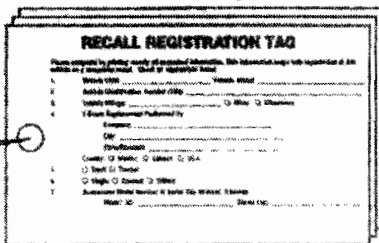
**Fastener Kit**  
P/N 33005311



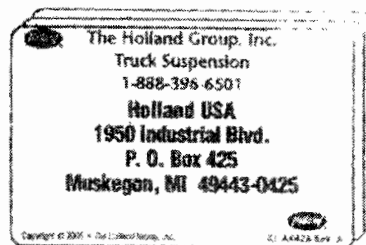
**Instructions Packet**  
P/N XM-RC001



**Replacement Procedure**



**3 Registration Tags**



**3 Return Labels**