



IC Corporation

751 South Harkrider, Conway, Ar 72302

RECEIVED

05V-122

2005 APR -8 P 2:14

SAFETY RECALL

SAFETY RECALL 05509

April 2005

Dear IC Corporation Customer:

This notice is sent to you in accordance with the requirements of the National Traffic and Motor Vehicle Safety Act. IC Corporation has decided that a defect, which relates to motor vehicle safety exists in certain CE School Bus, FE School Bus, RE School Bus, and RE Commercial Bus models built between 12/02/2002 and 03/01/2005 with Webasto heaters. The vehicle identified on the enclosed card fits this description and our records show that you own this vehicle. Federal regulations require that any vehicle lessor receiving this recall notice must forward a copy of this notice to the lessee within ten days.

REASON FOR THIS RECALL

An incorrectly manufactured burner tube in the Webasto heater installed in the bus can fail prematurely.

RISK TO MOTOR VEHICLE SAFETY

Premature failure of the burner tube may cause combustible materials in or around the vehicle to ignite. This may result in **property damage, personal injury or death.**

ACTION YOU SHOULD TAKE

1. **Our records show that you are the owner** of the vehicle identified on the enclosed card. **If you are not the owner**, please read paragraph number 6.
2. If you would like your IC dealer to make this inspection and repair for you at no cost, **please contact your local IC dealer**, with your recall card in hand, to schedule an appointment to have your vehicle repaired. If you prefer to inspect and repair the vehicle yourself, please follow the instructions outlined in the "Inspection and Repair Procedure" section below, then fill out and return the enclosed card.

If you desire to make this repair yourself and parts are required, return the enclosed card with box # 8 checked and our Compliance Department will have the parts directly to you at no charge. Please verify that your shipping address is correct. A Post Office Box (P.O. Box) number for shipping is not acceptable. We must have a street or road address. You may also obtain these parts by faxing a request to 1-501-505-2433 or emailing to Kathy.anders@ic-corp.com. The last eight characters of the VIN of each unit to be repaired must be included.

3. IC dealers will have parts and instructions to make the repair available to them by **04/25/2005**. The repair will be performed without charge to you and will take approximately 30 minutes. Have your dealer verify and correct your address, if necessary.

5. If the **vehicle will not be corrected or cannot be corrected**, please mark on the enclosed card under "CHECK ONE" the box, which best describes why the vehicle will not be repaired, and return the postage-prepaid card to us.
6. **In the event you do not own the vehicle** described on the card, please complete the card, fill in the new customer name and address if known, and return it to us. This information will allow us to update our records so we can contact the new owner and you will not be contacted again regarding this recall.

RECALL CLAIMS

For Repairs Performed By Customer or Non-Authorized IC Dealers

To assist in processing the recall, it is important that you provide an invoice with the following information.

- VIN # (or List of VINS repaired)**
- Recall Campaign # 05505 & SUBJECT (Engine Cover Retention Cable)**
- Facilities Repair Labor Rate**
- Labor Operation Number**

All correspondence must be returned to IC Corporation, PO Box 6000, Conway, Arkansas, 72033, Attn: Compliance Department.

IF YOU NEED ASSISTANCE

If you take your vehicle to your IC dealer on a mutually agreed upon service date, and the dealer does not remedy this condition without charge on that date or within five days, you can obtain assistance by following the procedure described in the Owner Assistance Guide section in your Owner's Manual or by calling toll free 1-800-448-7825.

You may also wish to submit a complaint to the Administrator, National Highway Traffic Safety Administration, 400 Seventh Street, S.W., Washington, D.C., 20590, or call the toll-free Auto Safety Hot-Line at 1-888-327-4236 if your IC dealer fails to repair or is unable to remedy this condition without charge or within a reasonable time.

We request your prompt attention to the correction of this defect and apologize for any inconvenience this may cause you.

PARTS INFORMATION

This kit will be shipped to you upon request. See *Actions You Should Take - step #2*.

Part Number	Part Description	Quantity
2589248C91	FE Engine Cover Kit - includes: bracket P/N 421756001 (2), cable assy P/N 2211534C91 (1), self tapping screws P/N 24396R1 (4)	1

INSPECTION AND REPAIR PROCEDURE



WARNING:

TO PREVENT SERIOUS EYE INJURY, ALWAYS WEAR SAFE EYE PROTECTION WHEN YOU PERFORM VEHICLE MAINTENANCE OR SERVICE.



WARNING:

TO PREVENT SERIOUS INJURY OR DEATH, ALWAYS DISCONNECT THE HEATER POWER CABLE FROM THE VEHICLE BATTERY BEFORE YOU PERFORM VEHICLE MAINTENANCE OR SERVICE. USE A VOLTMETER TO MAKE SURE THE HEATER IS NOT POWERED.

A 10mm socket, extension and 1/4 drive ratchet or a long 10mm Tee-handle and socket combination is required.

1. **Before** starting work, check to see if the heater is already marked. This means the burner tube has been replaced already. Corrected heaters are marked with a yellow dot on the control unit or on the front side of the burner head cover (black plastic) or in both places (see figures 6 & 7).
2. Remove the heater power cable from the vehicle battery or disconnect the heater from other electrical source. Removing the heater from the vehicle is not generally necessary.
3. Inspect the heater for the following serial numbers. Only these serial numbers must have the burner tubes changed. **If the Webasto heater serial number is not on this list, DO NOT change the burner tube.**

100265 through 100959
194702
200040 through 200775
219442 through 219545
228868 through 229116
229716
300290
300905 through 302449
400212 through 402002
700000 through 704500
705501 through 706056
707001 through 707498
800000 through 801300
802002 through 802066

4. Removing the heater from the vehicle is normally not necessary. For opening of heaters, both eyebolts of the housing are to be loosened (see figures 1 & 2).



Figure 1.

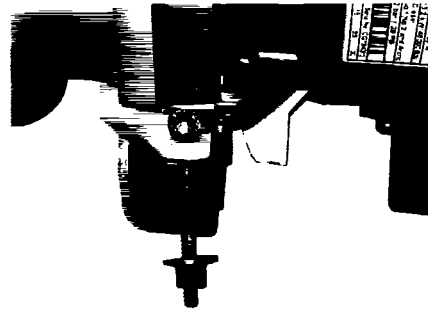


Figure 2.

5. Once the burner head has been unlatched, swing it open to the side (see figure 3). If there is no clearance to do so, or there is a risk of damaging the wiring harness or fuel lines, the split pin can be either removed or inserted in the other side of the housing **before** loosening the eyebolts. If there is not sufficient clearance, the burner head can be disconnected and completely removed. **CAUTION - do not damage the ignition electrodes (1) during the work. DO NOT change the screw position of the air intake bellows. This only happens if the adjusting screw is not properly tightened.**

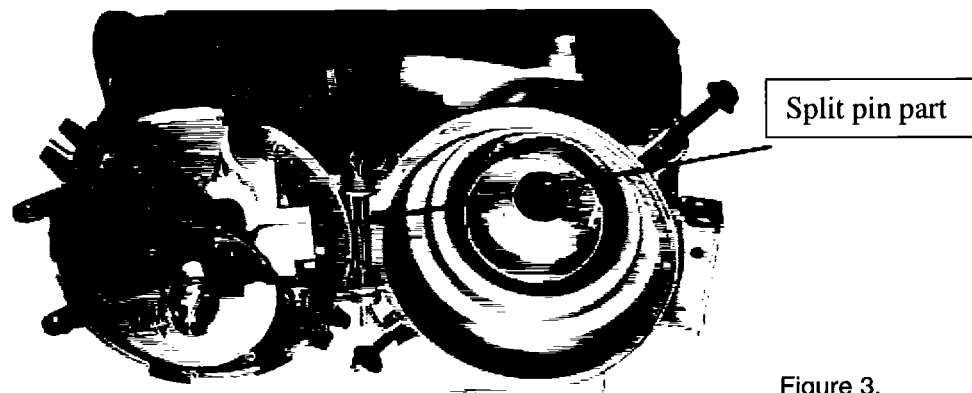


Figure 3.

6. The burner tube can now be carefully pulled out (see figure 4). If burner tube fit is very tight, use two screwdrivers to gently pry it evenly away from the heat exchanger. **Destroy the burner tube NOW so that it cannot be accidentally re-used (hit aluminum section of tube with a hammer- - once it is damaged, the tube is no longer useable).** Do a visual check of the heat exchanger for damages. If necessary, remove carbon deposits with a steel brush. Insert the new burner tube into the heat exchanger until it is fully seated. No further adjustment is necessary.



Figure 4.

7. When reassembling the burner head to the heat exchanger the eyebolts and ears must be in the correct position during tightening (see figure 1). **Tighten the eyebolts to a maximum of 4.0 Nm (35.5 lb/in.). Over-tightening could damage the casting. If the split pin was removed it must now be refitted.**
8. Once the burner head has been re-installed, make sure that all four grommets (2 right and 2 left) are in place. To minimize combustion air leakage, ensure grommets are fitted tightly around wire cables and fuel pipes. (see figure 5).
9. In the case of the Scholastic Series heater with a **single line fuel system**, make sure the blank fuel pipe slot in the casting has a **solid (no hole) grommet** in place.

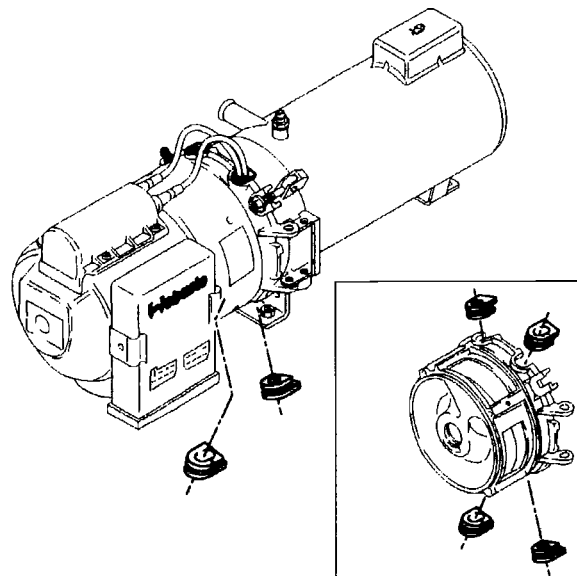


Figure 5.

10. Place a water insoluble (permanent ink or paint) yellow dot, minimum $\text{Ø}10\text{mm}$ (0.5 in.), on the control unit and on the front side of the burner head (see figures 6 & 7) to identify corrected heaters.

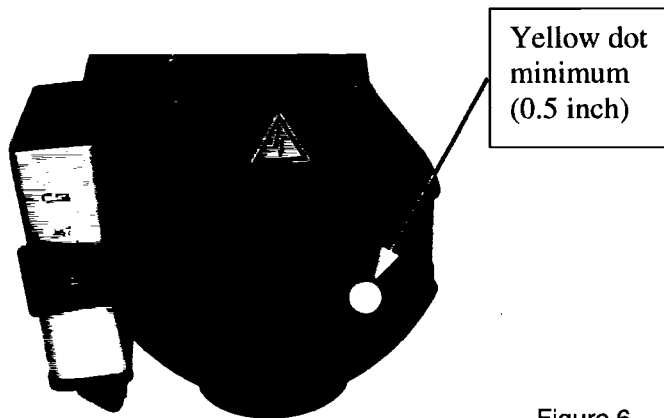


Figure 6.

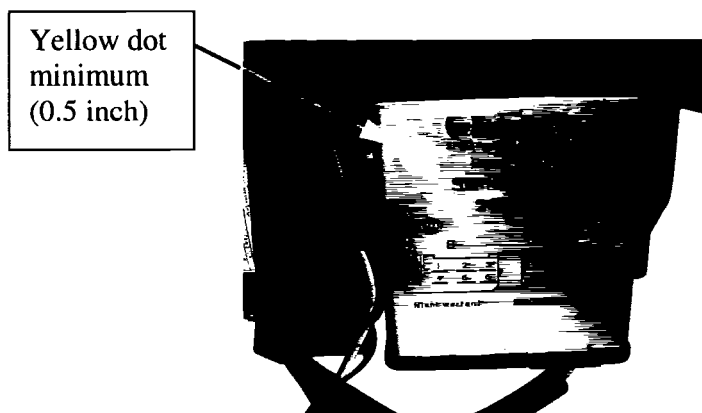


Figure 7.

11. After completing the correction, a visual inspection and a test run of the heater must be performed according to the service instructions.
12. If you are an IC customer and are completing this work, please include the Webasto heater serial number when you return the enclosed card.
13. If you are an IC dealer and are completing this work, please include the heater serial number in the warranty claim that you file.

Technical questions can be answered at the Webasto hotline: (800) 555-4518
 A Service and Repair manual is available online at www.techwebasto.com or by entering "http://www.techwebasto.com/heater_main/907502.pdf" into the address line of your web browser.

End of Inspection and Repair Procedure.

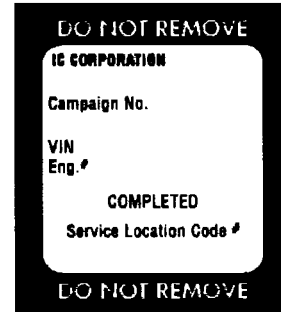
LABOR

<i>Labor Code</i>	<i>Description</i>	<i>Time(hour)</i>
A40-05509-1	Inspection only	0.3
A40-05509-2	Inspect and Repair if serial number is in list	0.5

CAMPAIGN IDENTIFICATION LABEL

*Each vehicle corrected in accordance with this campaign **must be** marked with a S00109 Campaign Identification Label.*

Complete the label and attach on a clean Surface next to the vehicle identification number (VIN) plate.



This label has been shipped with your letter.

IMPORTANT

In the event you no longer own the vehicle described, please fill in the requested information on the enclosed postage-prepaid card and return it to us. This information will allow us to notify the correct owner.

IC Corporation