

RECEIVED
25015-215
2005 SEP -8 A 11:00
OFFICE OF
DEFECTS INVESTIGATION

Assembly Number: 21300	Description: Smart Display Upgrade	Time/Part	Document Number: 25015-805 R04
---------------------------	---------------------------------------	-----------	-----------------------------------

Forms, Tools, and Equipment:

T20 Torx Long Blade Philips Screw Driver Air Wrench or Electric Screwdriver

Safety Summary:

Battery power must be disconnected prior to start of FET board removal.

Critical Items:

Read this entire document prior to start of the upgrade process.

Step 1:

Record the truck ID number and RR module number and the vehicle mileage on the return material paper work. This paper work must be filled out for proper credit.



Step 2:

Turn off power to the Smart Display system.



Step 3:

Disconnect power in the battery tray.



Assembly Number: 21300	Description: Smart Display Upgrade	Time/Part	Document Number: 25015-805 R04
---------------------------	---------------------------------------	-----------	-----------------------------------

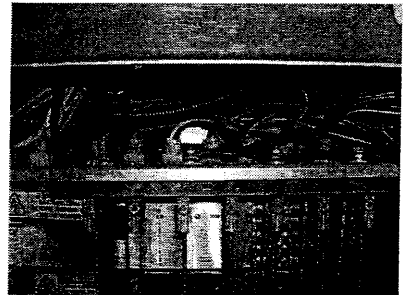
Step 4:

Disconnect the OEM battery under hood.



Step 5:

Remove the 12 Pin Deutsch output connectors from the FET cards.



Step 6:

If the power distribution has been installed toward the top of the compartment area or the vehicle has a small compartment, it may be easier to work on the distribution by removing the four screws holding it to the front wall.

Note: The distribution must be installed with four screws in the four corners. Please locate and reinstall ALL four screws if removed.



Step 7:

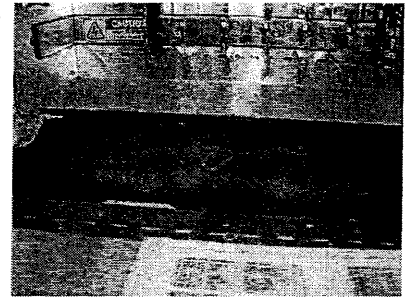
Mark the connectors J1 – J7 to make reinstallation easier.



Assembly Number: 21300	Description: Smart Display Upgrade	Time/Part	Document Number: 25015-805 R04
---------------------------	---------------------------------------	-----------	-----------------------------------

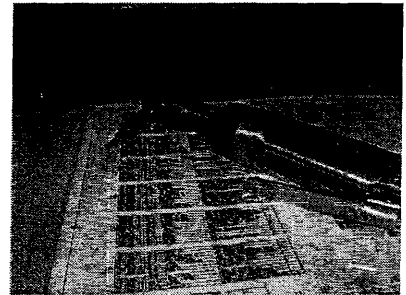
Step 8:

Each Deutsch connector has a gasket. Check that the gasket is installed on the connector after the connector is removed from the FET card. The gasket may come off and fall into the FET card connector.



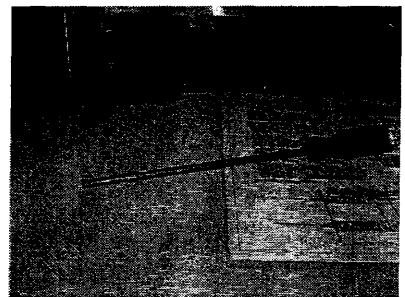
Step 9:

Using the Torx T20 bit, remove the two screws from each Deutsch connector on the top of the distribution center.



Step 10:

Use a long handled screw driver to loosen the FET card power buss bar tab.



Step 11:

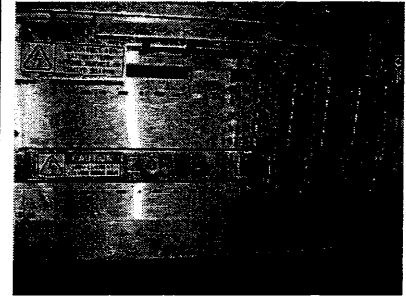
Loosen but do not remove the screw that holds the power buss bar tab on each FET card.



Assembly Number: 21300	Description: Smart Display Upgrade	Time/Part	Document Number: 25015-805 R04
---------------------------	---------------------------------------	-----------	-----------------------------------

Step 12:

Remove the FET cards



Step 13:

Remove the FET cards



Step 14:

IMPORTANT: Check that each FET card has a rubber gasket on the 12 pin Deutsch connector.

This connector may stick to the upper inside of the power distribution center and cause clearance issues during installation of the upgrade FET cards.



Step 15:

IMPORTANT: Check that each FET card has a rubber gasket on the 12 pin Deutsch connector.

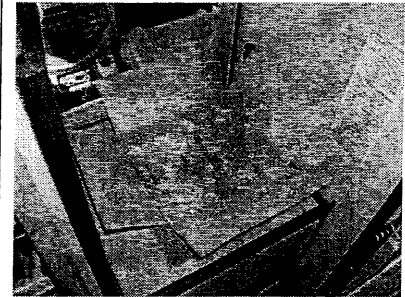
This connector may stick to the upper inside of the power distribution center and cause clearance issues during installation of the upgrade FET cards.



Assembly Number: 21300	Description: Smart Display Upgrade	Time/Part	Document Number: 25015-805 R04
---------------------------	---------------------------------------	-----------	-----------------------------------

Step 16:

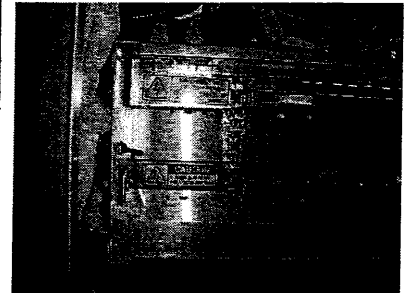
Open the box containing the new FET cards.



Step 17:

Install a FET card in each of the first seven slots of the power distribution center.

Snug the FET card buss bar screw just enough to hold the FET card in the slot. Do not tighten.



Step 18:

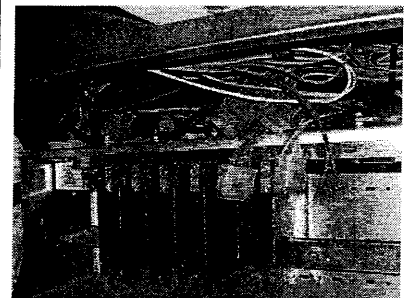
Using the Torx T20 bit and new Torx screws found with the FET cards, install two screws for each Deutsch connector on the top of the distribution center.

Use great care to not over tighten or strip the screw.



Step 29:

Reinstall the 12 Pin Deutsch connectors. Ensure the connectors “click” into the FET card



Assembly Number: 21300	Description: Smart Display Upgrade	Time/Part	Document Number: 25015-805 R04
---------------------------	---------------------------------------	-----------	-----------------------------------

Step 30:

Tighten the FET card bus bar tab screw.



Step 31:

If removed, reinstall the ground cables to the ground studs.

Do not turn on the power distribution switch at this time.



Step 32:

From behind the Front Switch Panel, remove the flash card and install the new upgrade flash card.



Step 33:

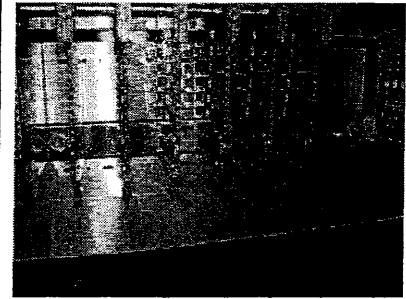
Reconnect the battery cables.



Assembly Number: 21300	Description: Smart Display Upgrade	Time/Part	Document Number: 25015-805 R04
---------------------------	---------------------------------------	-----------	-----------------------------------

Step 34:

Turn ON the power distribution switch and verify that all FET cards perform a bulb test. All LED lights should cycle (ramp) ON and then OFF.



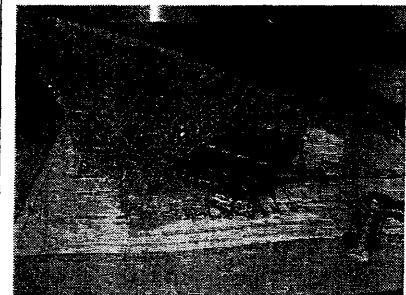
Step 35:

Turn the key switch to accessory and ensure that the Park brake is set. Auto boot loading of the new software should start.



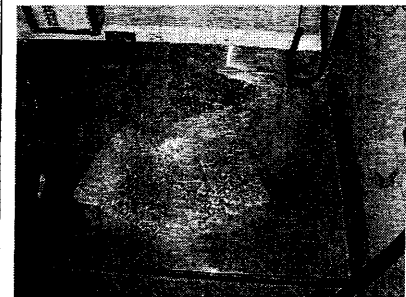
Step 36:

Place the old FET cards in the static bags from the new FET cards.



Step 37:

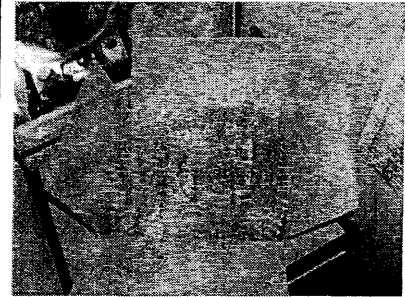
Close the static bags.



Assembly Number: 21300	Description: Smart Display Upgrade	Time/Part	Document Number: 25015-805 R04
---------------------------	---------------------------------------	-----------	-----------------------------------

Step 38:

Place the FET cards in the box.



Step 39:

Step 40: