



AMERICAN SUZUKI MOTOR CORPORATION

November 28, 2005

Mr. Ronald Medford
Senior Administrator for Vehicle Safety
National Highway Traffic Safety Administration
400 7th Street, S.W.
Washington, D.C. 20590

05V-548
(14 pages)

DEC 1 2005

DEFECTS INVESTIGATION

Dear Mr. Medford:

The following information is submitted in accordance with the defect reporting regulations in Title 49 of the Code of Federal Regulations, Part 573.

1. Name of Manufacturer and Importer

Manufacturer: Suzuki Motor Corporation

Importers:

Continental U.S. - American Suzuki Motor Corporation

Hawaii - Servco Pacific, Inc.

Puerto Rico - Suzuki Del Caribe, Inc.

2. Identification of Motor Vehicles Involved

Affected vehicles are certain 2006 model year Suzuki Grand Vitara multipurpose passenger vehicles produced from August 23, 2005 to September 15, 2005. Attached is a list of Vehicle Identification Numbers of affected vehicles.

3. Total Number of Motor Vehicles Involved

95

4. Percentage of Motor Vehicles Estimated to Contain the Defect

Approximately 20%

5. Description of Defect

The left-side rear differential retainer may be cracked due to a manufacturing defect. A cracked retainer can allow oil leakage from the rear differential. With continued use, this can lead to the rear differential gears becoming locked and the vehicle becoming disabled.

6. Chronology of Principal Events

September, 2005 - Suzuki was notified by the parts supplier of the possibility of a manufacturing defect in the rear differential retainer in affected vehicles. Suzuki initiated an investigation.

7. Description of Corrective Action

Suzuki will conduct a safety-related recall campaign to replace the left-side rear differential retainer in affected vehicles. American Suzuki Motor Corporation (ASMC) currently anticipates that it will notify Suzuki dealers about the recall at the beginning of December, 2005, and will notify owners of affected vehicles about the recall within two weeks of dealer notification. Since very few affected vehicles have been sold to retail customers, ASMC is planning to notify owners about the recall by telephone. Any owners that can not be contacted by telephone will be sent notification letters. We expect that distributors in Hawaii and Puerto Rico will use a similar process and will follow a similar schedule for dealer and owner notification.

Since the cost of any pre-notification repairs would have been covered under warranty, we understand that it is not necessary to specify a reimbursement plan or notify owners about eligibility for reimbursement of the cost of pre-notification repairs.

8. Copy of Notices

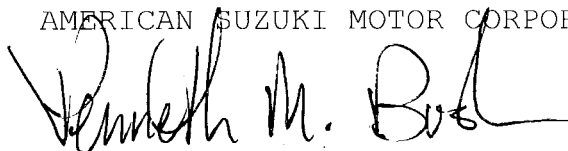
Enclosed is a copy of the intial notification letter that Suzuki Motor Corporation sent to ASMC. Copies of other notices will be provided when they have been finalized.

9. Suzuki Campaign Number

HT

Sincerely,

AMERICAN SUZUKI MOTOR CORPORATION



Kenneth M. Bush
Associate Director, Government Relations

PART 573 REPORT ATTACHMENT
LIST OF VINS OF AFFECTED VEHICLES

JS3TD941064101342	JS3TD943964102099	JS3TD947X64101403
JS3TD941164101348	JS3TD943964102104	JS3TD947X64101420
JS3TD941264101360	JS3TD943964102118	JS3TD941564101210
JS3TD941364101349	JS3TD943964102135	JS3TD941564101286
JS3TD941364101352	JS3TD943X64102080	JS3TD941664101295
JS3TD941464101330	JS3TD943X64102094	JS3TD941864101198
JS3TD941564101241	JS3TD943X64102113	JS3TD941964101226
JS3TD941564101336	JS3TD943X64102127	JS3TD943364102034
JS3TD941764101337	JS3TD943X64102130	JS3TD943364102048
JS3TD941764101385	JS3TD947064101393	JS3TD943364102079
JS3TD941864101296	JS3TD947064101412	JS3TD943464102009
JS3TD941964101355	JS3TD947064101426	JS3TD943664102030
JS3TD941964101386	JS3TD947164101385	JS3TD943964102071
JS3TD941X64101400	JS3TD947164101399	JS3TD943064101990
JS3TD943064102105	JS3TD947164101418	JS3TD943264102140
JS3TD943064102119	JS3TD947264101394	JS3TD943364102051
JS3TD943164102100	JS3TD947264101413	JS3TD943464102091
JS3TD943164102114	JS3TD947364101307	JS3TD943564101967
JS3TD943264102106	JS3TD947364101386	JS3TD943864102062
JS3TD943264102123	JS3TD947364101405	JS3TD943X64101978
JS3TD943364102096	JS3TD947464101395	JS3TD943X64102015
JS3TD943364102115	JS3TD947464101400	
JS3TD943564102083	JS3TD947464101414	
JS3TD943564102097	JS3TD947564101311	
JS3TD943564102116	JS3TD947564101390	
JS3TD943664101962	JS3TD947564101406	
JS3TD943664102089	JS3TD947564101423	
JS3TD943664102108	JS3TD947664101365	
JS3TD943664102111	JS3TD947664101396	
JS3TD943664102125	JS3TD947664101415	
JS3TD943764102019	JS3TD947764101410	
JS3TD943764102103	JS3TD947964101389	
JS3TD943764102120	JS3TD947964101392	
JS3TD943764102134	JS3TD947964101408	
JS3TD943864102093	JS3TD947964101411	
JS3TD943864102109	JS3TD947964101425	
JS3TD943864102112	JS3TD947X64101398	



SUZUKI MOTOR CORPORATION
Service Department
Overseas Automobile Field Service Group
Tel: 81-53-440-2363, Fax: 81-53-440-2251

Ref. #: TS051118-1
Date: November 18, 2005

To: Suzuki Distributor
Attn.: Managing director
Automobile Service Director / Manager

SUBJECT : JB SERIES (Grand Vitara) : SAFETY RECALL CAMPAIGN FOR
REAR DIFFERENTIAL RETAINER INSPECTION & REPLACEMENT

Dear Sirs and Madams,

We must regretfully inform you that certain JB416, JB420, JB419D and JB627 vehicles except 2WD specification produced from 23rd of August 2005 to 15th of September 2005 at IWATA factory in Japan may have a production failure.

Therefore, we would like to request you to kindly take the following actions below.

1. CONDITION

Suzuki Motor Corp. has decided to conduct a Safety Recall Campaign because certain JB416, JB420, JB420D, JB419D and JB627 vehicles except 2WD specification are already exported to your country, they may have a breakage on the left side of the Retainer, Rear Drive shaft due to improper material production after certain period of usage. In the worst case, the vehicle may not be able to drive in case the differential gears are stuck due to the oil leakage by Retainer breakage.

2. AFFECTED VEHICLE INFORMATION

- 1) Total number of potentially affected vehicles
2,490 units
- 2) Affected Vehicles actually exported to your country
Please refer to ANNEX 1 containing VIN list

3. ACTION

- Contact the affected customers to let them bring their vehicle to your authorized dealers.
- Replace the left side of the Retainer, Rear Drive shaft with the countermeasure part on all of the affected vehicles.

4. REPLACEMENT PARTS SUPPLY PLAN

For replacement parts, you are kindly requested to place an order the following Set part (27600-66810) to our Spare Parts Department using the attached sheet in Excel format to your Spare Parts Dept. to prevent them from placing relative parts in normal (SCAN) order, which isn't covered the airfreight by us.

Overseas Automobile Service Group will incur the Airfreight cost of the part shipment in prepaid basis for the period of initial three months by end of January 2006.

NO.	PART NUMBER	PART NAME	Q'TY/VEHICLE
SET	27600-66810	Retainer set, Rear Drive shaft, Left	1
1	27661-66J10	Retainer, Rear Drive shaft, Left	1
2	093181-27002	Snap ring	1
3	27692-66J00	Bolt, Mounting, Rear	2

Remarks : 27600-66810 contains the above three part as a set.

5. WARRANTY REIMBURSEMENT

We will provide a labor allowance of 1.3 hours per one.

Please submit the warranty claim application under the following terms to SMC.

- Claim Category : 2 (Campaign Claim)
- Trouble Code : 99-HT
- Operation Code :
GR9999/ 1.3 hours per one vehicle for Replacement
- Causal Part Number / Q'ty : 27661-66J10 / 0 pc
- Replacement Part Number / Q'ty : 27600-66810 / 1 pc

[NOTE]

- Operation code and Flat rate time are calculated under the condition of vehicle dispatched from factory. Suzuki genuine accessory fitment is not considered. Please contact Overseas Automobile Service Group in advance if you need to submit Suzuki genuine accessory removal and fitment.
- SMC will also reimburse 1) Airfreight cost for the order, which we receive within 3 months from this announcement, and 2) old part disposal cost for reasonable quantity. Issue a statement to SMC with an evidence for reimbursement.
- Please feel free to contact Overseas Automobile Service Group if you have any further clarification. Thanking you.

We are very sorry for causing inconvenience to you.
Your cooperation and assistance will be highly appreciated.

Sincerely yours,



Ken Saito
Group Leader
Overseas Automobile Service Group



Masanori Atsumi
Director
Quality Assurance and Automobile Service

Attachment:

- ANNEX 1 : Affected VIN list
ANNEX 2 : Check and Replacement of Rear Drive Left Retainer

VIN	Sales No	Case No	Distributor
JS3JTD94116410161	'BAC5156	'843031	304520
JS3TD941064101339	'BAC5151	'836635	304520
JS3TD941064101342	'BAC5151	'837841	304520
JS3TD941064101356	'BAC5151	'837837	304520
JS3TD941064101373	'BAC5151	'837859	304520
JS3TD941064101387	'BAC5151	'837830	304520
JS3TD941164101334	'BAC5151	'837856	304520
JS3TD941164101348	'BAC5151	'837815	304520
JS3TD941164101379	'BAC5151	'837838	304520
JS3TD941164101382	'BAC5151	'837844	304520
JS3TD941164101396	'BAC5156	'838408	304520
JS3TD941264101293	'BAC5151	'837831	304520
JS3TD941264101343	'BAC5151	'836636	304520
JS3TD941264101357	'BAC5151	'837834	304520
JS3TD941264101360	'BAC5151	'837852	304520
JS3TD941264101388	'BAC5151	'837860	304520
JS3TD941264101424	'BAC5156	'838448	304520
JS3TD941264101505	'BAC5156	'839015	304520
JS3TD941364101187	'BAC5151	'837829	304520
JS3TD941364101349	'BAC5151	'836596	304520
JS3TD941364101352	'BAC5151	'837848	304520
JS3TD941364101366	'BAC5151	'837853	304520
JS3TD941364101397	'BAC5156	'838432	304520
JS3TD941464101327	'BAC5151	'837846	304520
JS3TD941464101330	'BAC5151	'837813	304520
JS3TD941464101361	'BAC5151	'837817	304520
JS3TD941464101375	'BAC5151	'837828	304520
JS3TD941564101241	'BAC5151	'836630	304520
JS3TD941564101336	'BAC5151	'837847	304520
JS3TD941564101367	'BAC5151	'837825	304520
JS3TD941564101370	'BAC5151	'837858	304520
JS3TD941564101384	'BAC5151	'837849	304520
JS3TD941664101264	'BAC5151	'837840	304520
JS3TD941664101331	'BAC5151	'836634	304520
JS3TD941664101359	'BAC5151	'837857	304520
JS3TD941664101376	'BAC5151	'837835	304520
JS3TD941664101605	'BAC5156	'843031	304520
JS3TD941764101337	'BAC5151	'836676	304520
JS3TD941764101340	'BAC5151	'837833	304520
JS3TD941764101368	'BAC5151	'837842	304520
JS3TD941764101371	'BAC5151	'837827	304520
JS3TD941764101385	'BAC5151	'837816	304520
JS3TD941764101502	'BAC5156	'839180	304520
JS3TD941864101296	'BAC5151	'836708	304520
JS3TD941864101332	'BAC5151	'837832	304520
JS3TD941864101346	'BAC5151	'837821	304520
JS3TD941864101380	'BAC5151	'837839	304520
JS3TD941864101461	'BAC5156	'839175	304520
JS3TD941864101508	'BAC5156	'839192	304520
JS3TD941964101341	'BAC5151	'837822	304520
JS3TD941964101355	'BAC5151	'837851	304520
JS3TD941964101369	'BAC5151	'837826	304520
JS3TD941964101372	'BAC5151	'837850	304520

JS3TD941964101386	'BAC5151	'837845	304520
JS3TD941964101419	'BAC5156	'838411	304520
JS3TD941964101601	'BAC5156	'840396	304520
JS3TD941964101629	'BAC5156	'840362	304520
JS3TD941X64101350	'BAC5151	'837823	304520
JS3TD941X64101378	'BAC5151	'837854	304520
JS3TD941X64101395	'BAC5156	'838425	304520
JS3TD941X64101400	'BAC5156	'838438	304520
JS3TD943064102105	'BAC5151	'836762	304520
JS3TD943064102119	'BAC5151	'837889	304520
JS3TD943064102198	'BAC5156	'838462	304520
JS3TD943064102332	'BAC5156	'839041	304520
JS3TD943164102100	'BAC5151	'837863	304520
JS3TD943164102114	'BAC5151	'837893	304520
JS3TD943164102307	'BAC5156	'839243	304520
JS3TD943164102436	'BAC5156	'840553	304520
JS3TD943264101960	'BAC5151	'836603	304520
JS3TD943264102090	'BAC5151	'836742	304520
JS3TD943264102106	'BAC5151	'837865	304520
JS3TD943264102123	'BAC5151	'837866	304520
JS3TD943364102096	'BAC5151	'837884	304520
JS3TD943364102115	'BAC5151	'837880	304520
JS3TD943364102275	'BAC5156	'839268	304520
JS3TD943364102292	'BAC5156	'839299	304520
JS3TD943364102325	'BAC5156	'839303	304520
JS3TD943464102205	'BAC5156	'838463	304520
JS3TD943464102270	'BAC5156	'839297	304520
JS3TD943464102334	'BAC5156	'839275	304520
JS3TD943564102083	'BAC5151	'837862	304520
JS3TD943564102097	'BAC5151	'837861	304520
JS3TD943564102116	'BAC5151	'837888	304520
JS3TD943564102178	'BAC5156	'838358	304520
JS3TD943564102181	'BAC5156	'838490	304520
JS3TD943564102228	'BAC5156	'839235	304520
JS3TD943564102309	'BAC5156	'839287	304520
JS3TD943664101962	'BAC5151	'836776	304520
JS3TD943664102089	'BAC5151	'837883	304520
JS3TD943664102108	'BAC5151	'837879	304520
JS3TD943664102111	'BAC5151	'837864	304520
JS3TD943664102125	'BAC5151	'837890	304520
JS3TD943664102187	'BAC5156	'838455	304520
JS3TD943664102223	'BAC5156	'838477	304520
JS3TD943764102019	'BAC5151	'836815	304520
JS3TD943764102103	'BAC5151	'837872	304520
JS3TD943764102120	'BAC5151	'837894	304520
JS3TD943764102134	'BAC5151	'837868	304520
JS3TD943764102196	'BAC5156	'838484	304520
JS3TD943764102201	'BAC5156	'838469	304520
JS3TD943764102232	'BAC5156	'838501	304520
JS3TD943864102093	'BAC5151	'837871	304520
JS3TD943864102109	'BAC5151	'837874	304520
JS3TD943864102112	'BAC5151	'837892	304520
JS3TD943864102126	'BAC5151	'837895	304520
JS3TD943864102224	'BAC5156	'839210	304520

JS3TD943864102241	'BAC5156	'839279	304520
JS3TD943964102099	'BAC5151	'836804	304520
JS3TD943964102104	'BAC5151	'837887	304520
JS3TD943964102118	'BAC5151	'837875	304520
JS3TD943964102135	'BAC5151	'837869	304520
JS3TD943X64102080	'BAC5151	'836775	304520
JS3TD943X64102094	'BAC5151	'837878	304520
JS3TD943X64102113	'BAC5151	'837818	304520
JS3TD943X64102127	'BAC5151	'837867	304520
JS3TD943X64102130	'BAC5151	'837885	304520
JS3TD943X64102239	'BAC5156	'839278	304520
JS3TD944164100016	'BAC5156	'838383	304520
JS3TD944264100042	'BAC5156	'838406	304520
JS3TD944264100106	'BAC5156	'839126	304520
JS3TD944364100020	'BAC5156	'838384	304520
JS3TD944364100129	'BAC5156	'839067	304520
JS3TD944664100061	'BAC5156	'839094	304520
JS3TD944764100103	'BAC5156	'839088	304520
JS3TD944964100152	'BAC5156	'840299	304520
JS3TD944X64100094	'BAC5156	'839124	304520
JS3TD944X64100113	'BAC5156	'839076	304520
JS3TD947064101393	'BAC5151	'837801	304520
JS3TD947064101412	'BAC5151	'837793	304520
JS3TD947064101426	'BAC5156	'838334	304520
JS3TD947064101450	'BAC5156	'838938	304520
JS3TD947164101399	'BAC5151	'837799	304520
JS3TD947164101418	'BAC5156	'838329	304520
JS3TD947264101394	'BAC5151	'837805	304520
JS3TD947264101413	'BAC5151	'837802	304520
JS3TD947364101307	'BAC5151	'835723	304520
JS3TD947364101386	'BAC5151	'837810	304520
JS3TD947364101405	'BAC5151	'837812	304520
JS3TD947464101395	'BAC5151	'836560	304520
JS3TD947464101400	'BAC5151	'837808	304520
JS3TD947464101414	'BAC5151	'837800	304520
JS3TD947464101476	'BAC5156	'838984	304520
JS3TD947564101311	'BAC5151	'835724	304520
JS3TD947564101390	'BAC5151	'837804	304520
JS3TD947564101406	'BAC5151	'837811	304520
JS3TD947564101423	'BAC5156	'838322	304520
JS3TD947664101365	'BAC5151	'837794	304520
JS3TD947664101396	'BAC5151	'837798	304520
JS3TD947664101415	'BAC5156	'838343	304520
JS3TD947764101410	'BAC5151	'837797	304520
JS3TD947764101441	'BAC5156	'838345	304520
JS3TD947864101478	'BAC5156	'839007	304520
JS3TD947964101389	'BAC5151	'837807	304520
JS3TD947964101392	'BAC5151	'836535	304520
JS3TD947964101408	'BAC5151	'837792	304520
JS3TD947964101411	'BAC5151	'837809	304520
JS3TD947964101425	'BAC5156	'838315	304520
JS3TD947X64101398	'BAC5151	'837796	304520
JS3TD947X64101403	'BAC5151	'837806	304520

JS3TD947X64101420	BAC5156	838338	304520
JS3TD947X64101515	BAC5156	839005	304520

ANNEX2: REPLACEMENT OF REAR DRIVE LEFT RETAINER

1. Check the VIN once again whether it is affected range or not.
2. Check if the campaign has been already performed or not. (For example, by checking the Campaign sticker or paint marking etc., which was decided by each distributor.)
3. Lift up the vehicle.

Replacement of Rear Drive Left Retainer

4. Prepare the replacement parts set.

Part Number;

Retainer Set, Rear Drive Left : 27600-66810

(Contents: Rear Drive Left Retainer (1 pc.),

Snap Ring (1 pc.), Rear Diff Mounting Rear Bolt (2 pcs.))

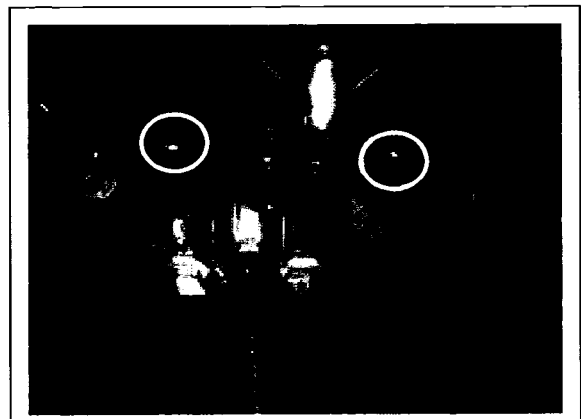
5. Drain the rear differential oil by removing the drain plug.
6. Remove the two bolts and the LH rear suspension frame stiffener.



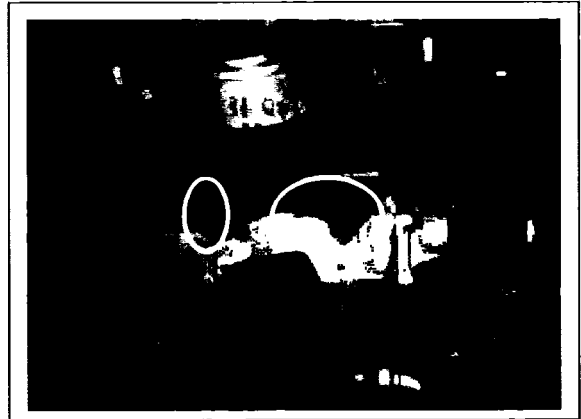
7. Give matching mark on the rear drive shaft flange and the rear drive shaft as shown in the picture, and then remove the rear drive shaft flange nuts (6 nuts for 2.7 liter MT model or 4 nuts for the rest of the models).



8. Support the rear differential carrier with a transmission jack etc. and remove the two bolts, which connect the rear suspension frame and the rear differential rear cover.



9. Remove the four bolts, which connect the rear differential front mounting and the rear differential carrier.
10. Now the rear differential assy is free from the vehicle.
Slide the rear differential assy to the right side.



11. Compressing the LH rear drive shaft and separate the drive shaft at the flange, and then using a crowbar, pull out the LH drive shaft from the rear differential assy.



12. Remove the five bolts and remove the rear drive left retainer from the rear differential assy.



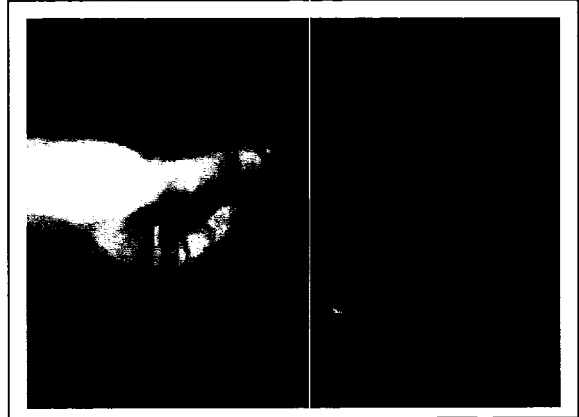
13. Clean the mating surface and apply sealant (SUZUKI BOND No.1217G) on the differential side.

14. Install a new rear drive left retainer and tighten the five bolts with the specified torque.

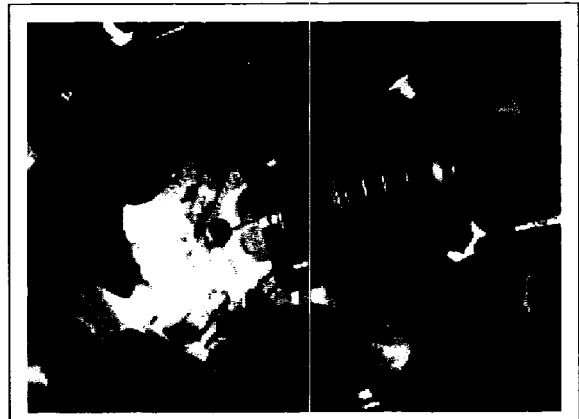
Tightening Torque;
Bolts of Rear Drive LH Retainer : 50N-m



15. Replace the snap ring on the LH rear drive shaft flange with a new one and reinstall the LH rear drive shaft flange into the rear differential assy.



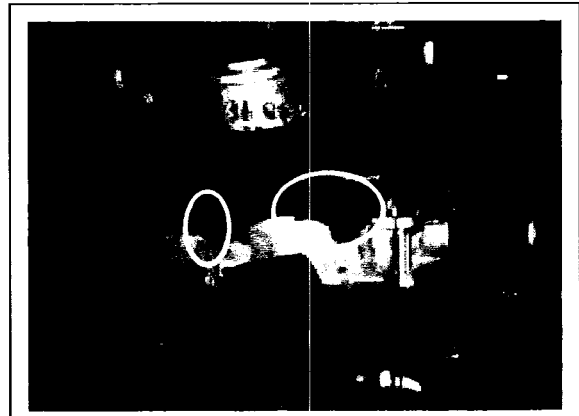
16. Install the LH rear drive shaft on the LH rear drive shaft flange aligning the matching mark.



17. Tighten the four bolts of the rear differential front bracket with the specified torque.

Tightening Torque;

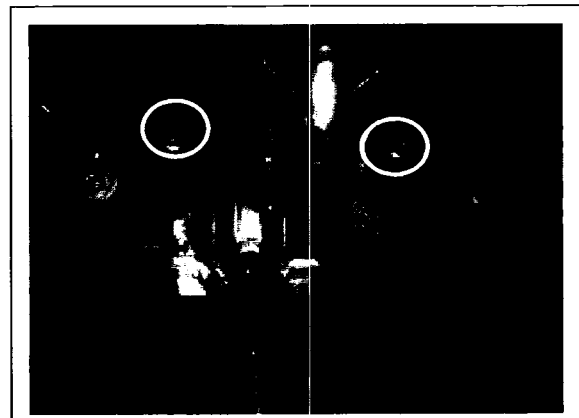
Bolts of Rear Diff Front Bracket : 50N-m



18. For the two bolts, which connect the rear suspension frame and the rear differential rear cover, use new bolts and tighten with the specified torque.

Tightening Torque;

Bolts of Rear Diff Rear Mounting : 120N-m



19. Tighten the four drive shaft nuts.

Tightening Torque;

Nuts of Rear Drive Shaft : 80N-m

20. Install the LH rear suspension frame stiffener.

Tightening Torque;

Bolts of Rear Suspension Frame Stiffener : 50N-m

21. Apply sealant (SUZUKI BOND No.1217G) on the thread of the oil drain plug and tighten the oil drain plug.

Tightening Torque;

Oil Drain Plug : 23N-m

22. Remove the oil filler plug and pour new specified oil until oil level reaches bottom of the oil filler plug hole.

NOTE:

Hypoid gear oil must be used for differential.

It is highly recommended to use API GL-5 80W-90 gear oil.

23. Apply sealant (SUZUKI BOND No.1217G) to thread of level / filler plug, and then tighten it to the specified torque.

Tightening Torque;

Oil Level / Filler Plug : 23N-m