



**MITSUBISHI FUSO**

TRUCK OF AMERICA, Inc.

2015 Center Square Road  
Logan Twp., NJ 08085  
(856) 467-4500  
(856) 467-4695 Fax

June 28, 2005

George Person  
Chief, Recall Management Division  
Office of Defects Investigation, Safety Assurance  
U.S. Department of Transportation  
National Highway Traffic Safety Administration, Room 5319  
400 Seventh Street, S.W.  
Washington, DC 20590

*05V-304  
(4 pages)*

**Subject: Safety Recall Notification on the AISIN Automatic Transmission Shift Linkage;  
Model Years: 1999 – 2004; Models: FE639, FE640, FE649, FG639, FH210  
MFTA Safety Recall – C0028810 AISIN A/T Shift Linkage**

Dear Mr. Person:

Pursuant to 49 CFR, Part 573, Mitsubishi Fuso Truck of America, Inc. (MFTA) herewith files a defect and noncompliance information report concerning the AISIN automatic transmission (A/T) shift linkage on certain 1999 through 2004 model year FE639, FE640, FE649, FG639 and FH210 Mitsubishi Fuso trucks for all states. The contents of this report are arranged to follow the sequence set forth in Section 573.5.

The Dealer Recall Information Bulletin and a sample of the letter that will be sent to each Mitsubishi Fuso truck owner affected by this recall will be forwarded to you upon completion.

Sincerely,

A handwritten signature in cursive script that reads "William P. Mohr".

William P. Mohr  
Director, Service Operations.  
Mitsubishi Fuso Truck of America, Inc.  
Phone: (856) 467-3917 Fax: (856) 467-4665

Enclosure: As stated

Defect and Noncompliance Information Report

1. The manufacturer's name:

Mitsubishi Fuso Truck & Bus Corporation (MFTBC), Japan

2. Identification of the vehicles or items of motor vehicle equipment potentially containing the defect or noncompliance:

<b>Models</b>	<b>Model Year Range</b>
FE639	1999 – 2004
FE640	2001 – 2004
FE649	1999 – 2004
FG639	1999 – 2004
FH210	2003 – 2004

- a) Inclusive dates of manufacture:

<b>Models</b>	<b>Vehicle Production</b>
FE639	February 27, 1998 through December 27, 2003
FE640	June 15, 2000 through January 12, 2004
FE649	February 27, 1998 through January 5, 2004
FG639	April 27, 2000 through January 20, 2004
FH210	January 30, 2002 through January 9, 2004

- b) GVWR or class of truck:

<b>Models</b>	<b>GVWR</b>	<b>Class</b>
FE639	11,600 lbs.	3
	13,500 lbs.	3
FE640	14,500 lbs.	4
FE649	14,500 lbs.	4
FG639	12,000 lbs.	3
FH210	17,900 lbs.	5

- c) Names of the components:

A/T Shift Control Lever Assembly

3. The total number of vehicles or items of equipment potentially containing the defect or noncompliance, and where available, the number of vehicles or items of equipment in each group identified pursuant to paragraph (c) (2) of the section:

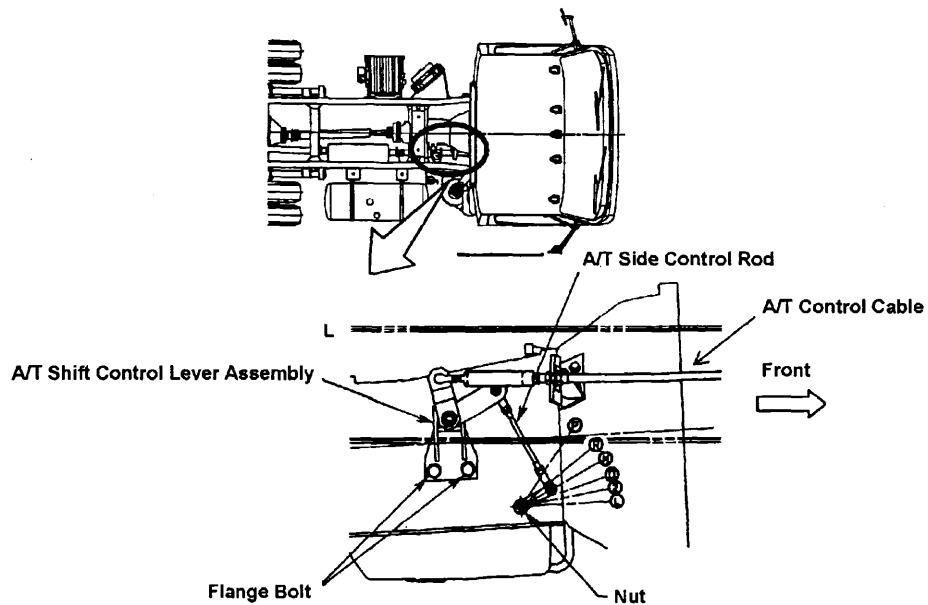
<b>Models</b>	<b># of Vehicles – U.S.</b>	<b># of Vehicles – Canada</b>	
'99 – '04 FE639	5,880	109	
'01 – '04 FE640	3,796	90	
'99 – '04 FE649	4,445	26	
'99 – '04 FG639	242	38	
'03 – '04 FH210	1,186	83	
<b>Totals</b>	<b>15,549</b>	<b>346</b>	<b>15,895</b>

4. The percentage of vehicles or items of equipment specified pursuant to paragraph (c) (2) of the section estimated to actually contain the defect or noncompliance:

Unknown

5. A description of the defect or noncompliance, including both a brief summary and a detailed description, with graphic aids as necessary, of the nature and physical location (if applicable) of the defect or noncompliance:

On affected vehicles, rust build-up on the A/T shift linkage, due to an insufficient corrosion inhibiting ability, may cause the linkage to bind. Rust build-up is accelerated in geographic locations that are situated near large bodies of salt water, or in regions with heavy snow/ice melting compound usage in winter months. The effort required to operate the A/T shift control lever may increase if the linkage binds due to rust build-up. In the worst case, the shift control lever may become inoperative, or the transmission gear position indicated on the instrument panel may not match the actual gear selection at the transmission.



6. In the case of defect, a chronology of all principal events that were the basis for the determination that the defect related to motor vehicle safety, including a summary of all warranty claims, field or service reports, and other information, with their date of receipt:

On June 22, 2005, MFTBC notified MFTA that they had determined that a defect related to motor vehicle safety existed and instructed MFTA to perform a safety recall.


After deliberate study of failed sample parts, MFTBC determined that the cause of failure was an insufficient corrosion inhibiting ability. This condition could allow rust to build up on the A/T shift linkage, causing the linkage to bind, resulting in an increase the effort required to operate the A/T shift control lever. In the worst case, the shift control lever may become inoperative, or the transmission gear position indicated on the instrument cluster may not match the actual gear selection on the transmission.

The summary report of all warranty claims, field or service reports, and other information MFTA has received, with their date of receipt will be forwarded by July 7, 2005.

7. In the case of noncompliance, the test results or other data on the basis of which the manufacturer determined the existence of the noncompliance:  
  
Not applicable.
8. A description of the manufacturer's program for remedying the defect or noncompliance:  
  
Install a modified A/T shift control lever assembly.  
  
MFTA will instruct its Dealer body to initiate a safety recall campaign as soon as the parts and notification become available.  
  
MFTA will inform NHTSA of the campaign schedule as soon as it has been determined.
9. Furnish a final copy of all notices, bulletins and other communications that relate directly to the defect or noncompliance and which are sent to more than one manufacturer, distributor, dealer or purchaser:  
  
MFTA will provide NHTSA with a final copy of all related documents when they have been completed.

If you have any questions or concerns, please do not hesitate to contact me at the number listed below.

Sincerely,



William P. Mohr  
Director, Service Operations  
Mitsubishi Fuso Truck of America, Inc.  
Phone: (856) 467-3917 Fax: (856) 467-4665

c: K. Idota (MFTBC)  
Y. Sato (MFTBC)  
N. Nakajima (MFTBC)