

**Recall Information Bulletin****No:** C0021610 **Issued:** 1/3/2005**Re:** Parking Brake Cable**Group:** 36 **Models:** FE**SUBJECT:**

Safety Recall C0021610 - Parking Brake Cable

MODELS:

FE639, FE649, FE640

VEHICLES INVOLVED:

Certain 1996 through 2001 model year FE639, FE649 and FE640 vehicles produced from February 21, 1995 through March 29, 2001.

A list of vehicles your Dealership has sold that require this Recall can be found on the Dealer's "Open Campaigns" list supplied by MFTA via Fusonet. Some individual vehicles described above may not need the Recall. Always check the "VIN Inquiry" tab under "Service" or "Warranty" on Fusonet to verify that the VIN requires this Safety Recall.

OWNER NOTIFICATION:

Owners of affected vehicles will be notified by mail. A copy of the customer letter is included with this bulletin.

CONDITION:

Mitsubishi Fuso Truck of America, Inc. has decided that a defect which relates to motor vehicle safety exists in the cable end of the parking brake cable on certain vehicles. On affected vehicles, repeated normal parking operation may cause the cable end to become improperly seated in the parking brake lever groove. In this condition, the parking brake cable may bend and/or break due to fatigue. In the worst case, the parking brake may become inoperative.

MODIFICATION:

The parking brake cable will be inspected for bending or damage at the cable end. If there is damage, a modified parking brake cable assembly will be installed. If no bending or damage exists, a cable retainer will be installed onto the end of the parking brake cable.

PARTS TO BE REPLACED:

The parking brake cable assembly will be examined. If no damage exists, a cable retainer will be installed onto the cable end of the parking brake cable. If the cable is bent or damaged, a modified parking brake cable will be installed. The replacement parts are available through normal parts channels.

MK551237	Cable retainer	0 - 1
MF445086	Self-locking nut (M12)	4
MK399490	Parking brake cable (M/T)	0 - 1
MK399492	Parking brake cable (A/T)	0 - 1
MC894625	U-retainer	0 - 1

RECALL CLAIM SUBMITTAL:

Claim parts and labor via the DIN System using the Recall Claim Entry screen. Enter all requested information, including the Recall Number. Choose a Recall Number from the Recall Reimbursement table on page two that corresponds with the correct transmission type and actual parts replaced. The system will apply the labor allowance and parts pricing adjustment shown.

RECALL PARTS RETENTION:

All parking brake cables that have been removed and replaced must be properly identified and retained, as outlined in the Warranty and Service Policy Manual, Section 3.8. The Field Service Manager will inspect each part and authorize its scrapping.

Recall Reimbursement					
Campaign Number	Transmission Type	Allowances		Labor Description	Part Numbers
C0021610	M/T & A/T	Labor Time	1.0 hours	Disassembly, inspection of cable condition, cable retainer installation, and adjustment of center brake shoe gap and parking brake ratchet bar pulling stroke	MK551237
		Parts Pricing	\$11.95		MF445086
C0021620	M/T	Labor Time	1.4 hours	Disassembly, inspection of cable condition, cable replacement, and adjustment of center brake shoe gap and parking brake ratchet bar pulling stroke	MK399490
		Parts Pricing	\$86.26		MC894625 MF445086
C0021630	A/T	Labor Time	1.4 hours	Disassembly, inspection of cable condition, cable replacement, and adjustment of center brake shoe gap and parking brake ratchet bar pulling stroke	MK399492
		Parts Pricing	\$112.52		MC894625 MF445086

REPAIR PROCEDURE:

Please follow all Service Manual procedures & cautions related to driveshaft and parking brake repairs.

1. Park the vehicle on a flat, level surface and shut off the engine.

PHOTO 1

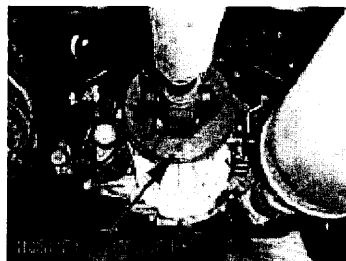


PHOTO 2

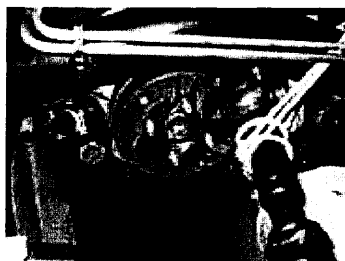


PHOTO 3

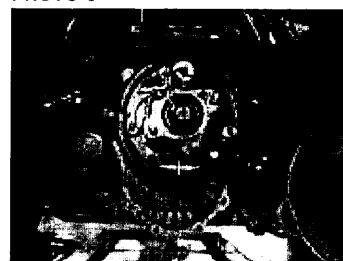


PHOTO 4

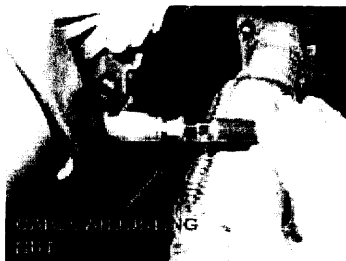


PHOTO 5

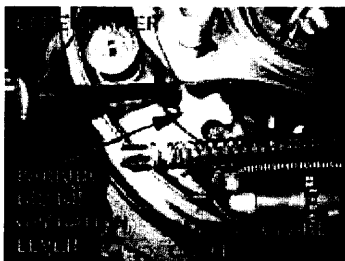


PHOTO 6



2. Rotate the parking brake drum until the shoe inspection hole is centered at the bottom of the drum (as shown in PHOTO 1), apply the parking brake, and chock the wheels securely.
3. Place alignment marks on the propeller shaft and yoke to ensure proper reassembly.
4. Remove the propeller shaft and secure it out of the work area (as shown in PHOTO 2). **NOTE: Do not reuse the propeller shaft flange lock nuts.**
5. Release the parking brake lever in the cab.
6. Removed the parking brake drum (as shown in PHOTO 3).
7. Loosen the parking brake cable adjusting nut to its maximum limit (as shown in PHOTO 4).

8. Disconnect the parking brake cable end from the parking brake operation lever. **NOTE: Do not bend the cable at an excessive angle during removal.** If necessary, insert a screwdriver between the parking brake operation lever and brake shoe (as shown in PHOTO 5) to assist with the parking brake cable removal.
9. Examine the end of the parking brake cable for any abnormal bending or breakage (as shown in PHOTO 6). If bending and/or breakage exists, proceed to step 11, Parking Brake Cable Assembly Replacement. If no bending or breakage exists, install a cable retainer. **NOTE: Do not install a cable retainer on a new parking brake cable assembly. The cable end has already been updated.**
10. **Cable Retainer Installation:**

PHOTO 7

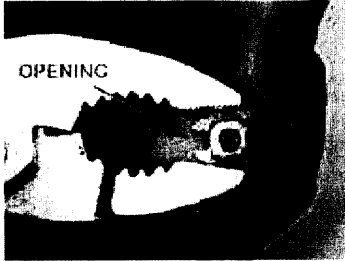


PHOTO 8

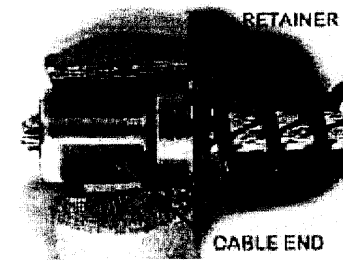


PHOTO 9

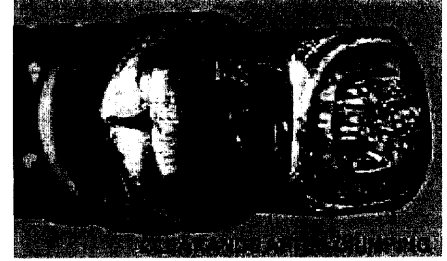


PHOTO 10

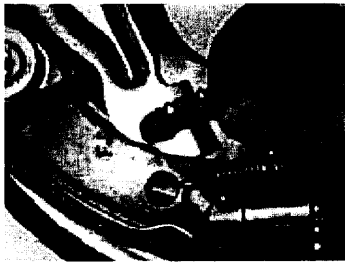


PHOTO 11

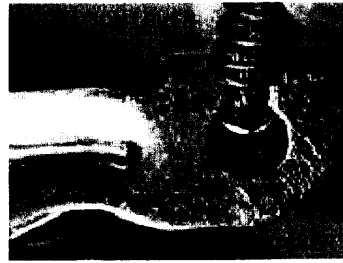


PHOTO 12



- Insert a cable retainer **MK551237** over the parking brake cable at the base of the cable end, facing the jaws of a pair of pliers (as shown in PHOTO 7).
 - Position the pliers over the cable end and retainer (as shown in PHOTO 8). **IMPORTANT! DO NOT POSITION THE PLIERS ON THE CABLE SPRING!**
 - Crimp the cable retainer closed gradually with moderate force, to ensure that the cable retainer remains circular. Excessive sudden force while crimping could deform the retainer. The retainer must remain circular to ensure proper alignment on the parking brake operation lever.
 - The clearance at the retainer opening must be **0 - 1mm** after crimping (as shown in PHOTO 9).
 - Reinstall the parking brake cable end on the parking brake operation lever (as shown in PHOTOS 10, 11 & 12), then proceed to step 12.
11. **Parking Brake Cable Assembly Replacement (bending and/or breakage exists):**
 - Remove and discard the u-retainer holding the parking brake cable to the parking brake assembly. **NOTE: Do not reuse the parking brake assembly u-retainer.**
 - Remove the parking brake cable assembly.
 - Install a new parking brake cable assembly (**MK399490** M/T-equipped, **MK399492** A/T-equipped), using a new u-retainer **MC894625**.

12. Reinstall the parking brake drum.
13. Reinstall the propeller shaft, using the alignment marks on the shaft and yoke.
14. Install 4 new propeller shaft flange lock nuts **MF445086** and torque to **73.8 to 88.5 ft.lbs.**
15. Adjust the parking brake shoe gap and parking brake cable assembly following proper service manual procedures.
16. Operate the parking brake ratchet bar a few times after adjusting to verify that the parking brake is operating properly, and that the parking brake drum does not drag when the parking brake is released.