



Recall Information Bulletin
No: R3125410 **Issued:** 1/3/2005
Re: Fuel Injection Pipe Clamps
Group: 13 **Models:** FE, FH

SUBJECT:

Safety Recall R3125410 - Fuel Injection Pipe Clamps

MODELS:

FE640, FH210 equipped with a 4M50 engine assembly

VEHICLES INVOLVED:

Certain 2001-2004 model year FE640 and FH210 vehicles produced from June 15, 2000 through July 2, 2003.

A list of vehicles your Dealership has sold that require this Recall can be found on the Dealer's "Open Campaigns" list supplied by MFTA via Fusonet. Some individual vehicles described above may not need the Recall. Always check the "VIN Inquiry" tab under "Service" or "Warranty" on Fusonet to verify that the VIN requires this Safety Recall.

Important note: It is a violation of Federal law for a dealer to deliver a new or used motor vehicle covered by this Recall Information Bulletin, under a sale or lease, until the Safety Recall has been completed.

OWNER NOTIFICATION:

Owners of affected vehicles will be notified by mail. A copy of the customer letter is included with this bulletin.

CONDITION:

Mitsubishi Fuso Truck of America, Inc. has decided that a defect which relates to motor vehicle safety exists in the rubber portion of the fuel injection pipe clamps. On affected vehicles, the rubber portion of the clamp could deteriorate, causing the clamp to loosen and drop. If this condition occurs in the area of the fuel injection pump, the engine starter could short circuit if the clamp drops onto the starter terminal. This could prevent the engine from starting. In the worst case, excessive heat from the short circuit could cause a fire.

MODIFICATION:

Replace the outer portion of four fuel injection pipe clamps and their attaching hardware. Apply threadlocker to the attaching hardware to prevent the bolts/nuts from loosening. Inspect for a rubber cap on the starter motor S terminal and install a cap if there is not one present, to prevent a short circuit. Install a new label cautioning against reusing bolts after removal.

PARTS TO BE REPLACED:

Four outer fuel injection pipe clamps and their attaching hardware will be replaced, using threadlocker, and a new caution label will be affixed. The replacement parts are available through normal parts channels in kit form. The contents of the kit (part number **KT213005**) are described below. On certain models, it may be necessary to install a protective rubber boot **ME753261** on the starter motor S terminal. **NOTE: The rubber boot is not included in the parts kit and must be ordered separately; and Loctite 242 or equivalent must be obtained locally.**

Clamp	4
Nut	2
Spring washer	2
Bolt & washer assembly	2
Caution label	1

RECALL CLAIM SUBMITTAL:

Claim parts and labor via the DIN System using the Recall Claim Entry screen. Enter all requested information, including the Recall Number. Choose a Recall Number from the Recall Reimbursement table on page two that corresponds with the correct cab configuration and actual parts replaced. The system will apply the labor allowance and parts pricing adjustment shown. A breakdown of the parts pricing adjustment can be found on page 4.

Recall Reimbursement					
Campaign Number	Cab Configuration	Allowances		Labor Description	Part Numbers
R3125410	Standard Cab	Labor Time	2.4 hours	Disassembly, outer clamp replacement, hardware replacement, reassembly, caution label installation and rubber cap installation	KT213005
		Parts Pricing	\$15.25		ME753261
R3125411	Standard Cab	Labor Time	2.2 hours	Disassembly, outer clamp replacement, hardware replacement, reassembly and caution label installation	ME753261
		Parts Pricing	\$10.43		
R3125412	Crew Cab	Labor Time	3.1 hours	Disassembly, outer clamp replacement, hardware replacement, reassembly, caution label installation and rubber cap installation	KT213005
		Parts Pricing	\$15.25		ME753261
R3125413	Crew Cab	Labor Time	2.8 hours	Disassembly, outer clamp replacement, hardware replacement, reassembly and caution label installation	KT213005
		Parts Pricing	\$10.43		

RECALL PARTS RETENTION:

All parts that have been removed and replaced must be properly identified and retained, as outlined in the Warranty and Service Policy Manual, section 3.8. The Field Service Manager will inspect each part and authorize its scrapping.

REPAIR PROCEDURE:

1. Park the vehicle on a flat, level surface, shut off the engine, apply the parking brake, chock the wheels and disconnect the battery cables.
2. Ensure that all loose items in the cab are secured. Tilt the cab following the procedures outlined in the truck's Owner's Manual.

PHOTO 1

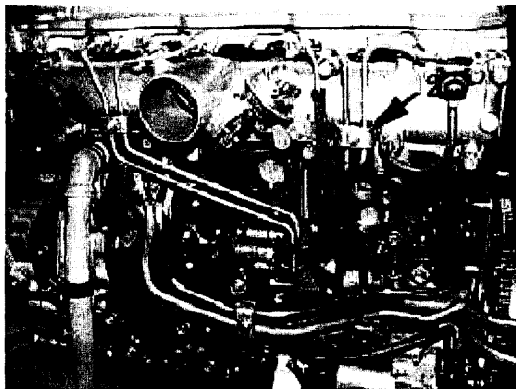
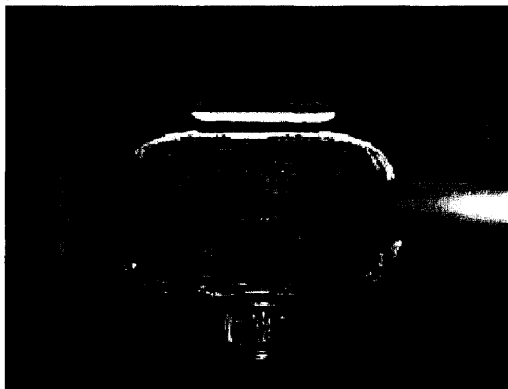


PHOTO 2



3. Remove the outer clamp at location 1 (as shown in PHOTO 1).
4. Install a new outer clamp (**MH020293**).
5. Apply a small amount of **Loctite 242 (or equivalent)** threadlocker on the threads of the existing stud.
6. Install a new spring washer (**MF450404**) and nut (**MF430004**) and tighten to **3.0 to 4.4 ft.lbs. IMPORTANT! DO NOT OVERTIGHTEN THE NUT!**
7. Clean off all excess adhesive.
8. Ensure that the thickness (**A**) of the assembled clamp is **0.81" to 0.85" (20.5 to 21.5mm)** after tightening (as shown in PHOTO 2). Repeat steps 3 to 6 if the measurement is outside of this specification.
9. Do not tighten or loosen the nut after proper specifications have been achieved. Loctite 242 cures to proper break-away strength after 24 hours.

10. Repeat steps 3 to 9 for the outer clamp at location 2.
11. Remove the outer clamp at location 3 (as shown in PHOTO 1).
12. Install a new outer clamp (**MH020293**).
13. Install a new bolt & washer assembly (**MH001852**) and tighten to **3.0 to 4.4 ft.lbs. IMPORTANT! DO NOT OVERTIGHTEN THE BOLT!**
14. Ensure that the thickness (**A**) of the assembled clamp is **0.81" to 0.85" (20.5 to 21.5mm)** after tightening (as shown in PHOTO 2). Repeat the steps 11 to 13 if the measurement is outside of this specification.
15. Do not tighten or loosen the bolt after proper specifications have been achieved. The yellow adhesive coating on the bolt threads cures to proper break-away strength after 6 hours.
16. Repeat steps 11 to 15 for the outer clamp at location 4.

PHOTO 3

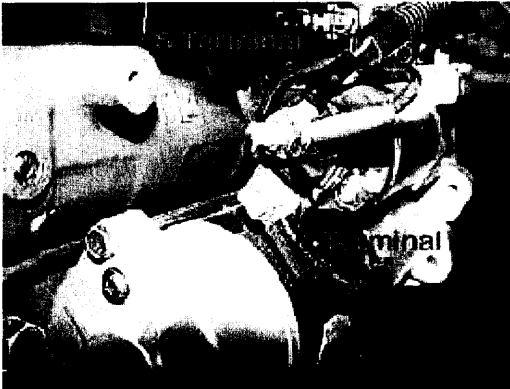
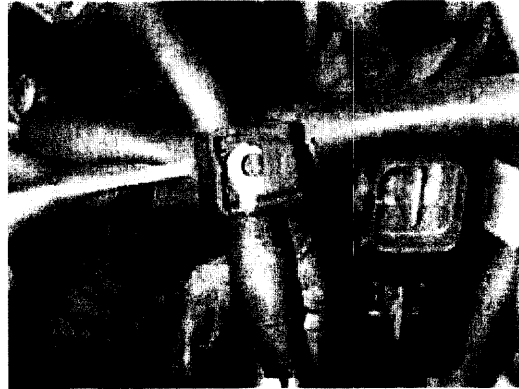


PHOTO 4



17. Examine the starter motor S terminal (as shown in PHOTO 3) for a protective rubber boot. **Note: Engines produced after August 2000 were assembled with the S terminal boot installed.**
18. If no boot exists, remove the S terminal harness, install a protective rubber boot (**ME753261**) over the S terminal (as shown in PHOTO 4), reinstall the harness, and tighten the harness retaining bolt to **1.48 to 1.84 ft.lbs.**

PHOTO 5

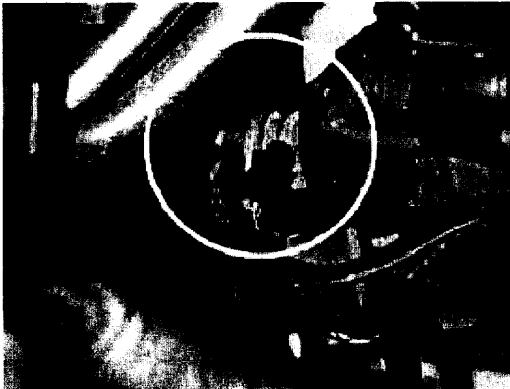
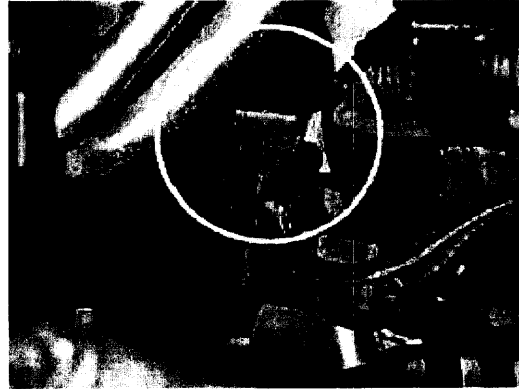
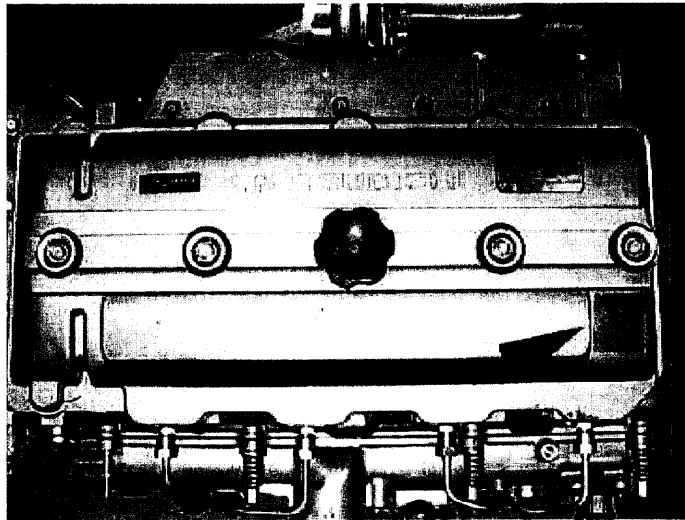


PHOTO 6



17. Examine the starter B terminal (as shown in PHOTO 3) for the condition of its protective rubber boot. If the boot is out of position (as shown in PHOTO 5), reinstall it in its proper position (as shown in PHOTO 6).

PHOTO 7



18. Clean and dry the left rear surface of the rocker cover (as shown in PHOTO 7).
19. Affix the caution label (ME224992) to the rocker cover in the red area indicated in PHOTO 7.

PARTS PRICING ADJUSTMENT TABLE:

Part #	Part Name	Qty	Recall Reimbursement
KT213005	Recall parts kit	1	\$9.93
ME753261	Rubber boot	1	\$4.82
	Loctite 242 or equivalent	as needed	\$0.50 per truck