

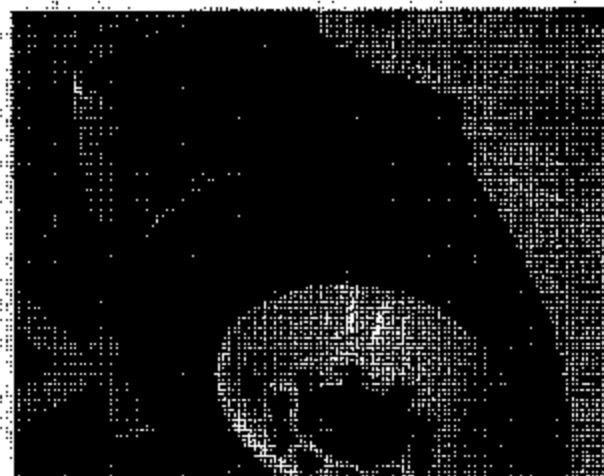




Check the rear wheels then release the right and left hood latches to release the hood.



Lift up the hood.



Start the engine and rotate the steering wheel counterclockwise 1.5 turns from the straight position and then turn off the engine. This is to position the pinch bolt where it will be easy to remove.

(When you turn off the engine keep your hand away from the steering wheel as it may kickback.)



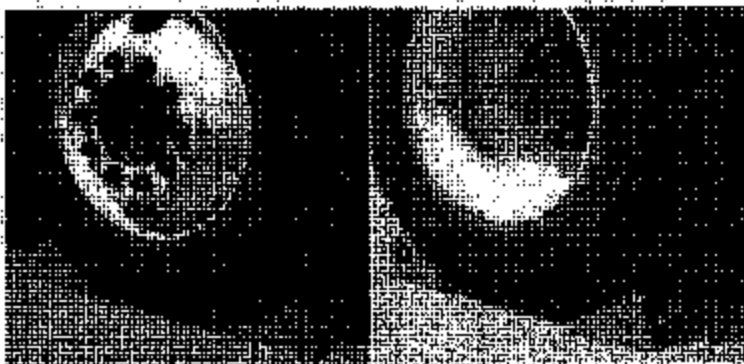
Check that the grease fitting of the steering shaft is positioned at the upper side and the pinch bolt is toward the outside. If not adjust the steering wheel until they are positioned properly.



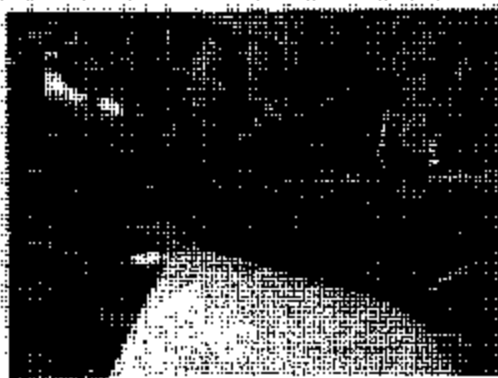
Turn the starter key and set it at the lock position. Then pull the key out.



Using a heavy piece of tape apply it to the steering wheel to keep the steering wheel from moving.

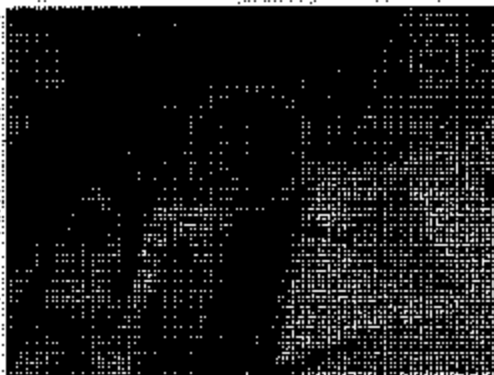


Verify the rear wheels are chocked.

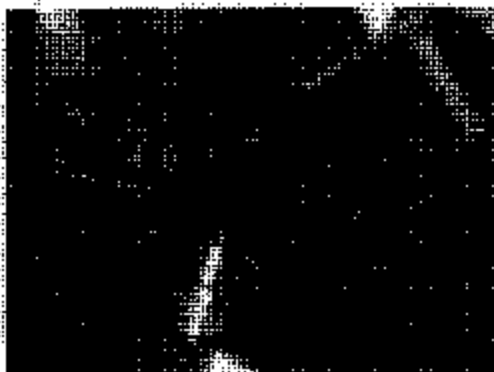


Mark the mating part of the splino shaft if it is not already marked. (Timing Marks)

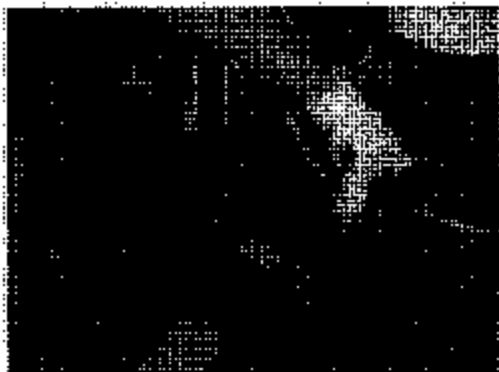
(Look for a White Dot on each shaft- if these are not present then mark the shaft accordingly before separating.)



Remove the grease fitting off the steering shaft using a 7mm wrench.



Remove the pinch bolt using a 14 mm wrench.



Pull out the steering shaft from the steering gear box and take off the shaft. (Clear Side)

Be careful not to turn the steering shaft.



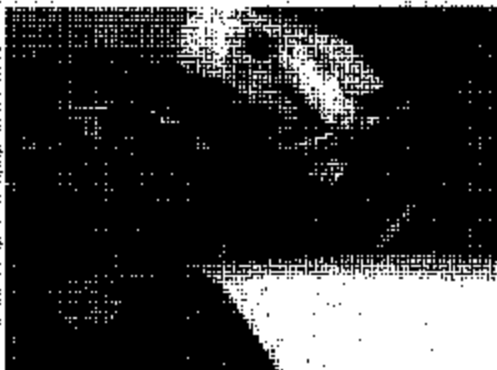
Remove the seal positioned at the tip of the steering shaft. (Cab Side)

Be careful not to turn the steering shaft.



Remove the 3 dust cover mounting bolts using a 10mm wrench.

Be careful not to damage the brake piping, the hoses or any other parts positioned around the boots.



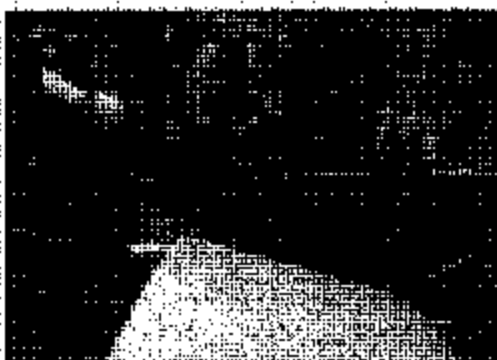
Remove the dust cover seal and replace it with a new one and reinstall the mounting bolts.

The mounting bolts should not be tightened until after the steering shaft is installed.



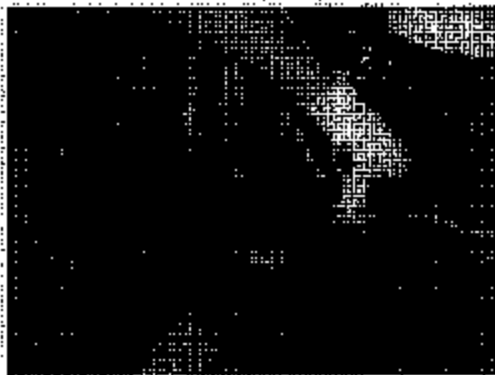
Reinstall the seal, positioned at the tip of the steering shaft. (Cab Side)  
Fit the uneven face of the seal with that of the shaft.

Be careful not to turn the steering shaft.



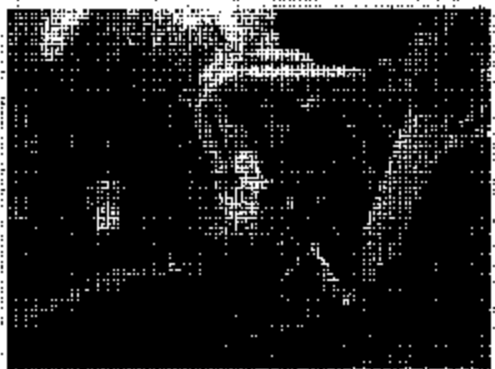
Install the steering shaft so that the timing marks on the shaft align properly.

Be careful not to turn the steering shaft.

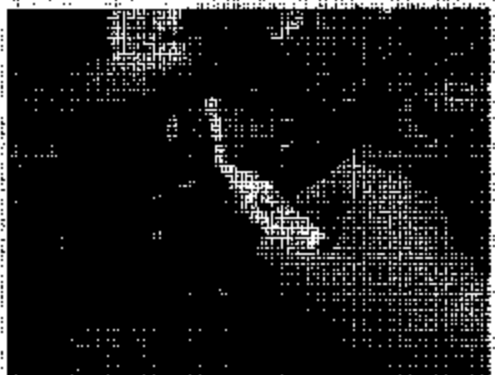


Install the steering shaft on the steering gear.

Be careful not to turn the steering shaft.



Install a new pinch bolt and tighten to 39.1 ft. lbs.



Once the pinch bolt is installed mark the pinch bolt with white paint as shown in the illustration.

(The white line should go through the Bolt head and the nut)



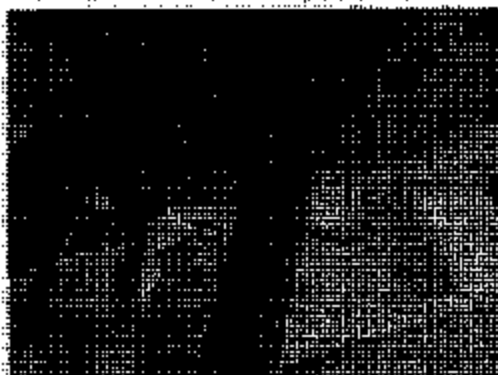
Tighten the 3 mounting bolts for the dust cover to 31 ft. lbs.



Check the installation condition of the new cover. Verify that the cover is seated properly as shown in the photo on the left. If it is not seated properly then the cover must be replaced with a new piece.



Install the grease fitting and tighten to 35 ft. lbs.



Install grease through the grease fitting with a grease gun.

(10 pumps with a manual grease gun)



Apply grease to the mating part of the dust cover seal and shaft. (Approx. 10 ml.)

Wipe off the excess grease)



Remove the tape from the steering wheel. Grasp the hood and close slowly. Verify the left and right hood straps are secure and remove the wheel chocks before operating vehicle.