



**Recall Information Bulletin**

**No:** R3120420 **Issued:** 10/21/2004

**Re:** Cab Tilt Main Hook

**Group:** 42 **Models:** FK6, FM6

**Re-issued:** 1/03/2005

**SUBJECT:**

Safety Recall R3120420 - Cab Tilt Main Hook - UPDATED

**MODELS:**

FK617, FM617, FM657

**VEHICLES INVOLVED:**

Certain 1996 through 1999 model year FK617, FM617 and FM657 vehicles produced from April 10, 1995 through November 19, 1998

A list of vehicles your Dealership has sold that require this Recall can be found on the Dealer's "Open Campaigns" list supplied by MFTA via Fusonet. Some individual vehicles described above may not need the Recall. Always check the "VIN Inquiry" tab under "Service" or "Warranty" on Fusonet to verify that the VIN requires this Safety Recall.

**OWNER NOTIFICATION:**

Owners of affected vehicles will be notified by mail. A copy of the customer letter is included with this bulletin.

**CONDITION:**

Mitsubishi Fuso Truck of America, Inc. has decided that a defect which relates to motor vehicle safety exists in the cab tilt main hook on certain vehicles. The cab tilt main hook is the latching mechanism that prevents the vehicle's cab from tilting forward during vehicle operation. On affected vehicles, the clearance between the main hook and surrounding components may be insufficient. Repeated normal cab tilting operation could cause the cab tilt system components to become damaged in the area of the cab main hook. If damage occurs, the cab main hook could latch improperly, and in the worst case, the cab could tilt forward during normal vehicle operation, which could result in a crash without warning.

**MODIFICATION:**

The tilt cab main hook assembly was modified to increase the clearance between the hook and the surrounding components while returning the cab latch mechanism to the locked position. The lock lever and the control lever bracket were modified to minimize assembly tolerance, which also assists in increasing the clearance between the tilt cab main hook and the surrounding components.

**PARTS TO BE REPLACED:**

The cab main hook assembly, lock lever, control lever hook bracket and related parts will be replaced with modified components on all affected vehicles. The replacement parts are available through normal parts channels in kit form. The contents of the kit (part number is **KT642002**) are described on page 2 of this bulletin. Inspect the condition lock lever bolt **MC907595**. Replace the bolt only if evidence of bending or abnormal wear exists. The lock lever bolt is not included in the kit, and must be ordered separately.

R3120420	Labor Time	3.3 hours	Replace the main hook assembly, lock lever and control lever bracket	KT642002
	Parts Pricing	\$196.47		
R3120430	Labor Time	5.3 hours	Replace the main hook assembly, lock lever, control lever bracket and lock lever bolt	KT642002
	Parts Pricing	\$198.26		MC907595

**RECALL CLAIM SUBMITTAL:**

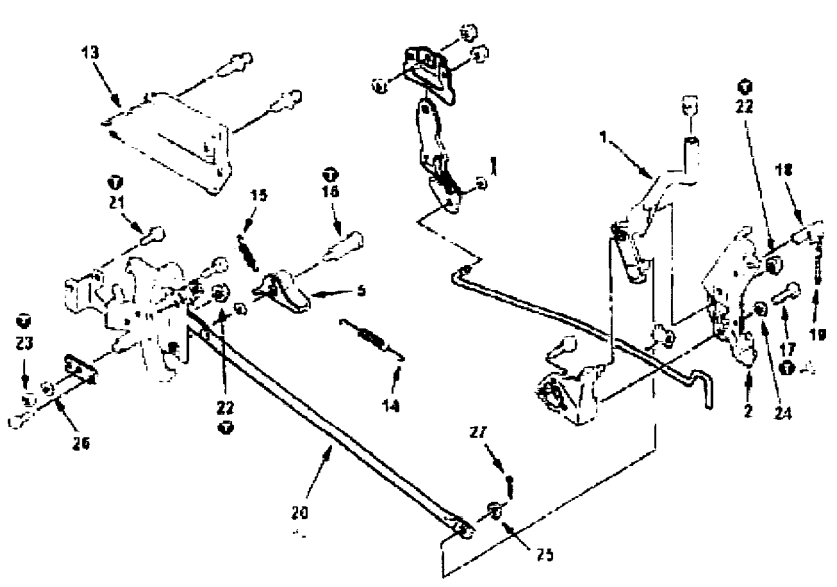
Claim parts and labor via the DIN System using the Recall Claim Entry screen. Enter all requested information, including the Recall Number relating to the actual work performed. The system will apply allowances as listed in the Recall Reimbursement table.

Main Hook Assembly	1
Lock Lever	1
Control Lever Bracket	1
Bolt/Washer Assembly (10x25)	4
Bolt (8x16)	2
Flange Nut (10)	2
Jam Nut (12)	1
Plain Washer (8)	2
Plain Washer (14)	1
Spring Washer (12)	1
Split Pin	1

## REPAIR PROCEDURE:

1. Park the vehicle on a flat, level surface, shut off the engine, apply the parking brake, and chock the wheels.
2. Ensure that all loose items in the cab are secured. Tilt the cab following the procedures outlined in the truck's Owner's Manual.

DIAGRAM 1



**Part Names:**

1 Control Lever	16 Lock Lever Bolt	22 Nut
2 Control Lever Bracket	17 Bolt	23 Nut
5 Lock Lever	18 Key	24 Washer
13 Main Hook Cover	19 Chain	25 Washer
14 Return Spring	20 Main Hook Assembly	26 Spring Washer
15 Return Spring	21 Bolt	27 Clevis Pin

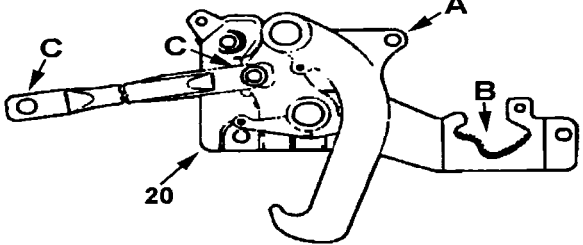
3. Disassembly Procedures (refer to Diagram 1 above):

- Remove the main hook cover 13.
- Remove return springs 14 & 15.
- Loosen the lock lever bolt 16 and remove the lock lever 5.
- Inspect the lock lever bolt 16 for reuse. Replace the bolt 16 only if bending or abnormal wear is evident.
- Remove the main hook assembly 20.
- Remove the chain 19 and key 18 from the control lever bracket 2.
- Remove the control lever bracket 2.

## Tightening Torque

16	Lock Lever Mounting Bolt	25-40
17	Control Lever Bracket Mounting Bolt	6.6-10
21	Main Hook Assembly Mounting Bolt	25-40
22	Main Hook & Control Lever Bracket Mounting Nut	15-22
23	Main Hook Assembly Mounting Nut	24-36
28,29	Cab Bridge Mounting Bolt & Nut	72-100

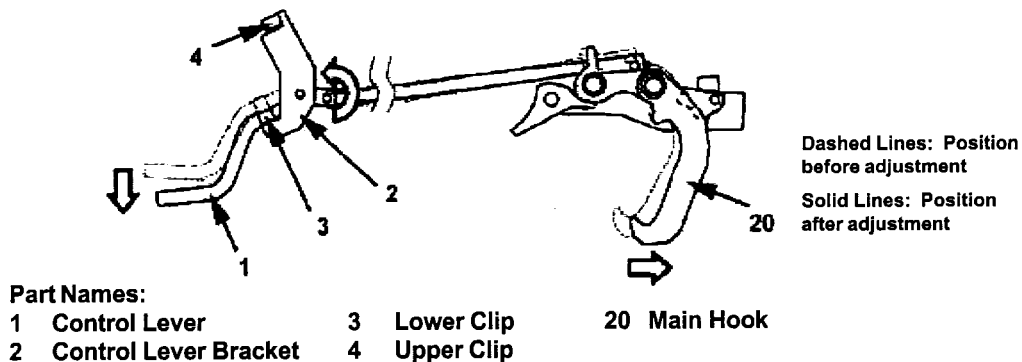
## Adhesive & Lubricant

17	Control Lever Bracket Mounting Bolt Threads	Loctite 242, Permatex Threadlocker Blue, or equivalent	As required
20	Main Hook Assembly Roller A	Chassis grease NLGL No. 1 or equivalent	As required
	Main Hook Assembly Roller Frictional Surfaces B		
	Control Rod End Eye Sections C		
			

### 4. Installation Procedures (refer to DIAGRAM 1):

- Install the new Control Lever Bracket (MC964520) 2 loosely, applying adhesive to the Control Lever Bracket Mounting Bolt 17 threads, as described in the Adhesive and Lubricant table above.
- Install the new Main Hook Assembly (MC964511) 20, tightening the Mounting Bolts 21 as specified in the Tightening Torque table. Apply grease to the sections described in the Adhesive & Lubricant table.
- Install Return Spring 15 on the Main Hook Assembly 20.
- Installed the new Lock Lever (MC964516) 5, tightening the Lock Lever Mounting Bolt (MC907595) 16 as specified in the Tightening Torque table.
- Install Return Spring 14 on the Lock Lever 5.

DIAGRAM 2



### 5. Main Hook Assembly Adjustment (refer to DIAGRAMS 1 and 2):

- Pull the Control Lever 1 down, latching it securely into the Lower clip 3.
- Continue to pull down on the Control Lever 1 until it stops. This will fully seat the Control Lever Bracket 2 on its Mounting Bolts 17.
- Continue to apply downward pressure on the Control Lever 1 and tighten the Control Lever Bracket Mounting Bolts 17 as specified in the Tightening Torque table.
- Install the Key 18 and Chain 19 on the Control Lever Bracket.

6. Confirmation of Proper Adjustment

- Lower the cab. Push the Control Lever 1 up into the Upper Clip 4, locking the cab in the closed position.
- Confirm that the Control Lever 1 seats fully into the Upper Clip 4 and that the Key 18 can be properly inserted into the Control Lever Bracket 2.
- If there are any problems with the steps above, repeat STEP 5, keeping firmer downward pressure on the Control Lever 1 while tightening the Control Lever Hook Bracket Mounting Bolts 17 as specified in the Tightening Torque table.

7. Inspection After Assembly (PHOTO 1)

- Check for evidence of contact between the Main Hook Assembly 20 and the Hook Pin Bracket 7, Cab Bridge 8, and Hook Hinge Bracket 9. Contact in these areas is unacceptable.
- Contact in the area indicated within the red oval is considered acceptable.

8. Adjustment for unacceptable contact

If the Main Hook Assembly 20 contacts the Hook Pin Bracket 7 or Hook Hinge Bracket 9, repeat all disassembly and reassembly procedures.

If the Main Hook Assembly 20 contacts the front portion of the Cab Bridge 8:

- Loosen the Bolts 28 and Nuts 29.
- Push the Cab Bridge 8 forward until the Main Hook Assembly 20 properly clears the Cab Bridge 8 without contact.
- Retighten Bolts 28 and Nuts 29 as specified in the Tightening Torque table

9. Final Operational Check (PHOTO 2)

- Push upward forcefully on the Control Lever 1 while tilting the cab and confirm that the Lock Lever 5 does not disengage from the Main Hook Arm 12.
- Repeat the Final Operational Check three additional times using the following steps: Lower the cab, lock the cab tilt system, unlock the cab tilt system, tilt the cab, perform the check while tilting.

PHOTO 1

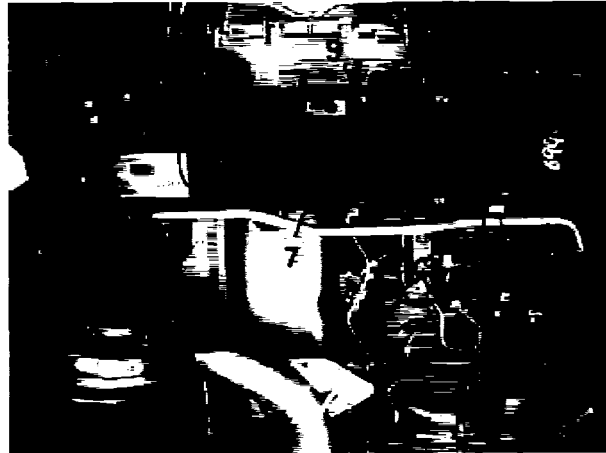
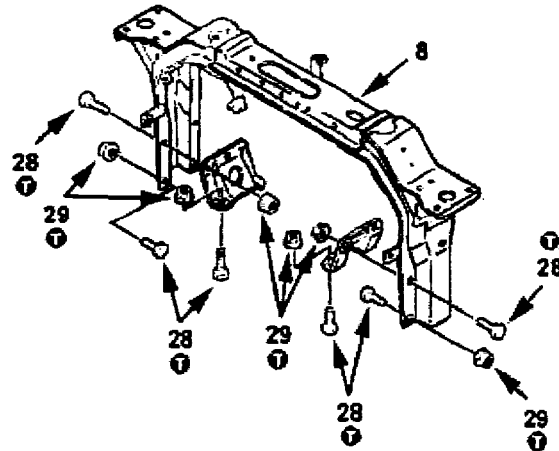


DIAGRAM 3



Part Names:

- |                      |                             |
|----------------------|-----------------------------|
| 5 Lock Lever         | 12 Main Hook Arm            |
| 7 Hook Pin Bracket   | 28 Cab Bridge Mounting Bolt |
| 8 Cab Bridge         | 29 Cab Bridge Mounting Nut  |
| 9 Hook Hinge Bracket |                             |

PHOTO 2

