



04V-404

**SAFETY
RECALL
BULLETIN**

**SAFETY RECALL RVXX0405
NOVEMBER 2004**

SAFETY RECALL BULLETIN

ATTENTION: SERVICE MANAGERS
PARTS MANAGERS

SUBJECT: Isringhausen Bench Seat

SAFETY RECALL INFORMATION:

Volvo Trucks North America, Inc. has decided that certain VHD model vehicles built between January 3, 2003 and October 22, 2003, with the passenger bench seat option, fail to conform to Federal Motor Vehicle Safety Standard 207, "Seating Systems".

The passenger bench seat mounting to the floor is not sufficient to meet the seat pull requirements of the standard; therefore, the seat anchorage to the floor may not be sufficient to retain the adjusted seating position. This may lead to personal injury or death in the event of a vehicle crash.

VEHICLES AFFECTED:

Volvo VHD model vehicles manufactured by Volvo Trucks North America, Inc. between January 3, 2003, and October 22, 2003 with the Isringhausen Bench Seat. There are one hundred twenty six (126) vehicles affected by this recall.

NOTE: To verify or determine if a particular vehicle is affected by this recall (or any other recall), you should consult the DCS, Service/Warranty screen. By entering the Vehicle Identification Number into the VEHINQ segment, the screen will display any outstanding recall.

If a "Dealer Listing" is enclosed it identifies the vehicles that were sold or shipped to your dealership. Be sure to check the VEHINQ screen before performing the recall to verify that the recall is still open.

INSPECTION INSTRUCTIONS:

There are no inspections associated with this recall.

REPAIR:

The recall repair consists of replacing the Isringhausen Bench Seat with a National Seating Bench Seat.

TIME ALLOWANCE:

- | | |
|-------------------------------------|---------------------------------|
| Inspection: | - Not required for this recall. |
| Repair (includes take charge time): | - 1.5 hours per vehicle |

RECALL PARTS:

Recall Kit Number: 85108106

The kit consists of a National Seating Bench Seat, Base Plate, Seatbelts, D-ring Foam and bracket, and mounting hardware for the seat and seatbelts.

One (1) kit is required per vehicle.

KIT ORDERING PROCEDURES:

Kits for this recall should be ordered through Volvo Trucks North America, Inc. Dealer Communication System. The following information is required to place an order:

1. Your dealer account number, and
2. Recall kit number.

NOTE: Kits must be ordered class one.

The cost of the kit plus 30% dealer mark-up will have to be claimed according to the guidelines identified under the heading "*Claims for Credit*".

DEALER INVENTORY:

No parts in dealer inventory will be affected by this recall.

REMOVED PARTS:

Removed parts should be scrapped after the removed seats are rendered unusable with the local District Service Manager to confirm that the part was rendered unusable before being scrapped.



CLAIMS FOR CREDIT:

Expenses associated with the performance of this recall will be reimbursed based on the guidelines identified in this bulletin, and by submitting a claim following published instructions in section 10-7-4-9 of the "Service Operations Manual" and chapter 20 of the "Parts Operations Manual".

NOTE: Claims for a recall repair must be submitted within 2 working days from the repair date.

CLAIM CODING INFORMATION:

Type: - P
Authorization Number: - RVXX0405
Inspection: - None
Repair (includes take charge time): - 85234-0-02 (1.5 hours per vehicle)

OWNER RECALL RESPONSE LETTER:

The "Owner Recall Response Letter" is to provide the vehicle owner with a convenient way to notify Volvo Trucks North America, Inc. of changes affecting the ownership of the subject vehicle. The owner recall response letter is not intended for dealer usage other than to assist you in the preparation of the repair orders necessary to perform the applicable recall on the subject vehicle. Please do not use the letter as a way to inform Volvo Trucks North America, Inc. that the vehicle has been inspected or modified. Your DCS claim on line is the appropriate means of informing Volvo Trucks North America, Inc. that the vehicle has been inspected or modified.

DEALER RECALL RESPONSIBILITY:

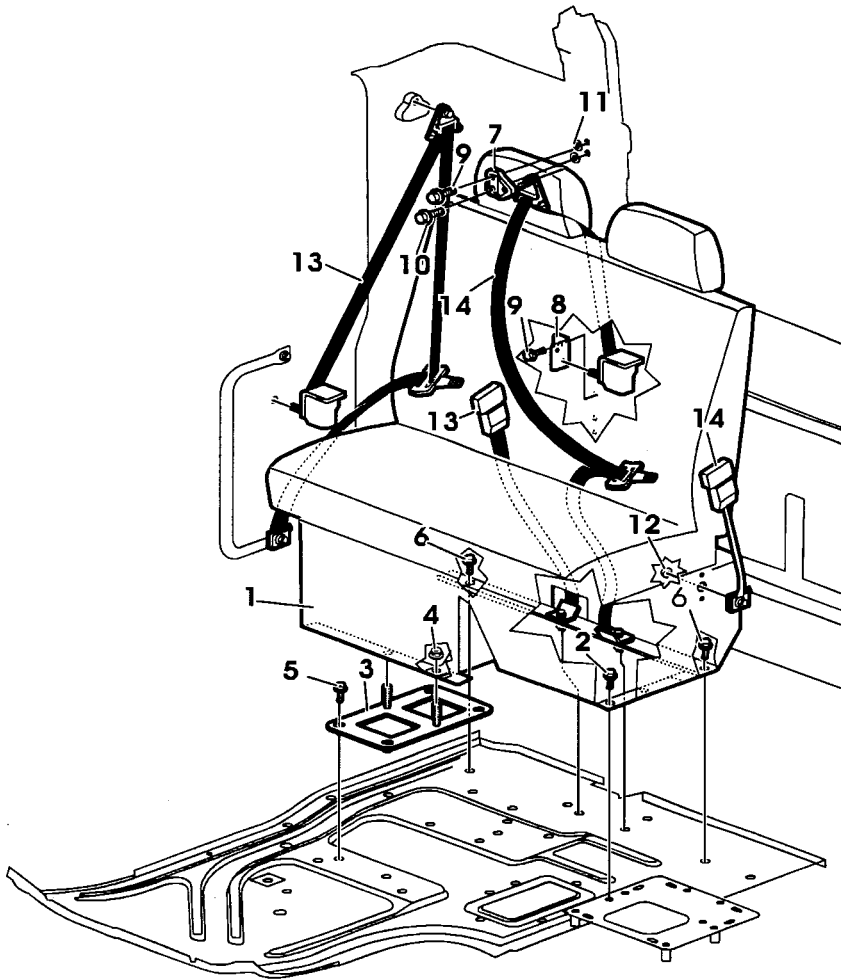
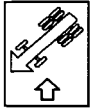
Dealers are to perform the recall on all vehicles subject to the recall at no charge to the owner regardless of mileage, age of vehicle, or ownership from this time forward. Whenever a vehicle subject to this recall is taken into or is in your vehicle inventory or dealership for service, we strongly recommend you make every effort to perform the recall correction before the vehicle is sold or released to the owner.

IMPORTANT NOTICE:

Please note that the National Traffic and Motor Vehicle Safety Act requires that the owner's vehicle(s) be corrected within a reasonable time after parts are available to you. The law states that failure to repair a vehicle within sixty (60) days after tender for repair shall be a prima facie evidence of unreasonable time. However, circumstances of a particular situation may reduce the sixty (60) day period. If an owner's vehicle is not repaired within a reasonable time, he or she may be entitled, without charge, to a reasonable equivalent vehicle or refund of the purchase price, less reasonable allowance for depreciation.

**SAFETY RECALL RVXX0405
NOVEMBER 2004**

Repair Instructions



Description	Part Number	Quantity		Description	Part Number	Quantity	
1	Seat	20563253	1	8	Bracket, belt	20435630	1
2	M10 Flange screw	946472	1	9	M8 Flange screw	947760	3
3	Plate	20396456	1	10	7/16 Flange screw	979624	1
4	M10 Flange nut	971095	2	11	Spacer	977799	2
5	M10 6Pt screw	969763	4	12	Nut	945989	1
6	7/16 Flange screw	979624	2	13	Seat belt, outboard	20478308	1
7	Bracket, D-ring, foam	20514609	1	14	Seat belt, inboard	20478306	1

IMPORTANT NOTE! You **MUST** read and understand the precautions and guidelines in Service Information Group 80, "General Safety Practices, Cab" in your Volvo Service Manual before performing this procedure.

CAUTION: Do not use air tools to remove the seat belt bolts. Doing so may damage the threads on the cage nuts.

REPAIR INSTRUCTION:

1. Remove the existing passenger seat belts (inboard and outboard), seat belt retractor bracket, D-ring bracket, and bench seat.
2. Remove the right hand threshold plate and roll the floormat forward to expose the seat mounting plate.
3. Install the new seat mounting plate (20396456) by using four (4) M10 6Pt screws (969763).
4. Roll the floormat back and cut the hole for the seat-mounting studs and then reinstall the threshold plate.
5. Install the outboard seat belt assembly (20478308) by attaching the seat belt retractor, "D-ring", and "tether bracket" to the "B-pillar" using the hardware provided with the seat belt assembly.
6. Install the inboard seat belt retractor bracket (20435630) to the cab rear wall by using two M8 flange screws (947760).

TORQUE REQUIREMENTS:

- M8 Flange screw: 24 \pm 4 N-m (18 \pm 3 ft-lb)
- M10 Screw/ nut: 48 \pm 8 N-m (35 \pm 6 ft-lb)
- 7/16 Flange screw: 50 \pm 7 N-m (37 \pm 5 ft-lb)

7. Install the inboard seat belt assembly (20478306) by attaching the seat belt D-ring and "Bracket D-ring foam" (20514609) to the rear wall using two spacers (977799), one M8 flange screw (947760), one 7/16 flange screw (979624), and the 7/16 flange screw provided with the seat belt assembly.
Note: the "Bracket D-ring foam" mounts on top of the seat belt D-ring with the hardware passing through both parts.

8. Attach the inboard seat belt assembly retractor to the seat belt retractor bracket using the hardware provided with the seat belt assembly.

NOTE: the loose end of the seat belt is attached after installing the seat.

9. Install the bench seat (20563253) using two M10 flange nuts (971095), one M10 flange screw (946472), and two 7/16 flange screws.
10. Route the outboard seat latch in between the seat back and seat bottom so that latch is exposed to front of the seat. Attach the outboard seat belt latch to the rear floor through the seat base using the hardware provided with the latch.
11. Drape the inboard seat belt over the front of the seat. Route the loose end between the seat back and seat bottom. Attach the loose end of the inboard seat belt to the floor through the seat base using the hardware provided.
12. Install the inboard seat belt latch to the inboard face of the seat using the hardware provided with the latch and a 7/16 lock nut (945989).

SAFETY RECALL RVXX0405
NOVEMBER 2004

SAMPLE OWNER LETTER

SAFETY RECALL NOTICE **VOLVO**

SAFETY RECALL RVXX0405
NOVEMBER 2004

Dear Volvo Truck Owner:

The purpose of this letter is to inform you of a safety recall for certain Volvo Trucks. This recall is for the purpose of correcting a defect in the engine control system.

Volvo Trucks North America, Inc. has identified a defect in the engine control system for certain Volvo Trucks. This defect may cause the engine to stall or run poorly, which could result in a safety hazard.

SAFETY RECALL: The purpose of this recall is to correct a defect in the engine control system for certain Volvo Trucks. This defect may cause the engine to stall or run poorly, which could result in a safety hazard.

POTENTIAL RISK: The defect described in this recall may cause the engine to stall or run poorly, which could result in a safety hazard.

PURPOSE OF THIS RECALL: The purpose of this recall is to correct a defect in the engine control system for certain Volvo Trucks. This defect may cause the engine to stall or run poorly, which could result in a safety hazard.

REPAIR: The defect described in this recall may cause the engine to stall or run poorly, which could result in a safety hazard.

YOUR RESPONSIBILITY: You are responsible for ensuring that your Volvo Truck is repaired in accordance with the recall instructions.

WHAT YOU SHOULD DO: Volvo Trucks North America, Inc. is providing you with this recall notice to inform you of the defect and to request that you contact your Volvo Truck dealer to schedule a repair. You should contact your Volvo Truck dealer as soon as possible to schedule a repair.

THE NEXT STEPS: You should contact your Volvo Truck dealer to schedule a repair. You should contact your Volvo Truck dealer as soon as possible to schedule a repair.

YOUR RESPONSIBILITY:

It is your responsibility to ensure that your Volvo Truck is repaired in accordance with the recall instructions. You should contact your Volvo Truck dealer as soon as possible to schedule a repair.

YOUR RESPONSIBILITY:

It is your responsibility to ensure that your Volvo Truck is repaired in accordance with the recall instructions. You should contact your Volvo Truck dealer as soon as possible to schedule a repair.

YOUR RESPONSIBILITY:

It is your responsibility to ensure that your Volvo Truck is repaired in accordance with the recall instructions. You should contact your Volvo Truck dealer as soon as possible to schedule a repair.

YOUR RESPONSIBILITY:

It is your responsibility to ensure that your Volvo Truck is repaired in accordance with the recall instructions. You should contact your Volvo Truck dealer as soon as possible to schedule a repair.

We appreciate your cooperation in this recall program. If you have any questions, please contact your Volvo Truck dealer.

Sincerely,

Volvo Trucks North America, Inc.