

**HONDA**

American Honda Motor Co., Inc.  
1919 Torrance Boulevard  
Torrance, CA 90501-2746  
Phone (310) 788-2000

April 2004

Dear Honda Dealer:

**RE: SAFETY RECALL – 2003 FSC600/A Silver Wing Fuel Tank Inspection**

**DEALER RESPONSIBILITY REPORT**  
(Service Bulletin FSC600 #3)

The enclosed Campaign Responsibility Report for the 2003 FSC600/A shows the VINs that were either sold by your dealership or are still in your inventory. All sold units that have been warranty-registered with American Honda show the customer's most current name and address.

Please review the report to ensure that any FSC600 listed is in your inventory, or contact the customer so an appointment can be made to have the inspection completed. For your information, the report codes in the "UNIT STAT" column mean:

**02 = In your inventory; perform the inspection as necessary.**

**FX = Inspection has been performed.**

**NR = Customer mailing returned as undeliverable. If you have an alternate means of contacting the customer, please do so.**

**blank = Customer already notified; no action necessary.**

- For each unit shown in your inventory (code 02), but already sold, notify the owner and arrange to perform the inspection.
- Reminder: If you have not yet warranty-registered a sold unit, please do so now.

If you have completed any repairs for which you have not yet submitted warranty claims, please do so as quickly as possible. This is necessary for our tracking purposes. If you have any questions, please contact your District Service Manager.

Regards,

American Honda Motor Co., Inc.



Silvio Carrara  
Vice President – Service  
Motorcycle Division

Bulletin Number	Page	File Behind Dealer Guide Bulletin Tab
04-0214	1 of 1	Service



# Service Bulletin

American Honda Motor Co., Inc.

## SAFETY RECALL

### 2003 FSC600 Silver Wing Fuel Tank Inspection

American Honda's Motorcycle Division is conducting a Safety Recall to inspect the fuel tank on affected Silver Wings.

Some fuel tanks were improperly manufactured and do not meet material strength specifications. Engine vibration or riding on bumpy roads could cause these tanks to crack and leak. A fuel leak in the presence of an ignition source could result in a fire.

Affected units will be inspected and, if necessary, the fuel tank will be replaced.

#### AFFECTED UNITS

All 2003 FSC600  
JH2PF011\*3K100002 thru JH2PF011\*3K102133

All 2003 FSC600A  
JH2PF014\*3K000004 thru JH2PF014\*3K000367

#### CUSTOMER NOTIFICATION

American Honda is sending a letter to owners of all affected 2003 FSC600 Silver Wings informing them they must bring their scooter to a Honda scooter dealer to have the Safety Recall procedure performed.

Your assistance is needed to ensure your Silver Wing customers are informed of this Safety

Recall. A copy of the customer letter is reproduced on page 4 of this Service Bulletin.

#### DEALER INVENTORY

DO NOT sell any affected unit in your inventory until the inspection has been completed. By Federal law, all new or used affected units in your inventory must be inspected before release to the customer. Refer to the INSPECTION PROCEDURE section of this Service Bulletin.

#### VIN INSPECTION

Before you begin, check if the inspection has already been performed on the unit. See the IDENTIFICATION section of this Service Bulletin.

- If the unit has been inspected, you will find a punch mark after the last digit of the VIN. This indicates the unit has already been inspected and no further action is required.
- If the unit has not been inspected, proceed to the INSPECTION PROCEDURE section.

NOTE: Verification of the inspection can also be found in the Dealer Responsibility Report and on *IN*. If you have any questions about the inspection verification, please contact TechLine at (800) 421-1900 before proceeding.

**CUSTOMER INFORMATION:** The information in this bulletin is intended for use only by skilled technicians who have the proper tools, equipment, and training to correctly and safely maintain your Honda. These procedures should not be attempted by "do-it-yourselfers," and you should not assume this bulletin applies to your Honda, or that your Honda has the condition described. To determine whether this information applies, contact an authorized Honda dealer.

**INSPECTION PROCEDURE**

**NOTE:** When performing these procedures, refer to the 2003-2004 FSC600 Service Manual.

1. Remove all the fuel from the fuel tank. Leave the fuel filler cap off.

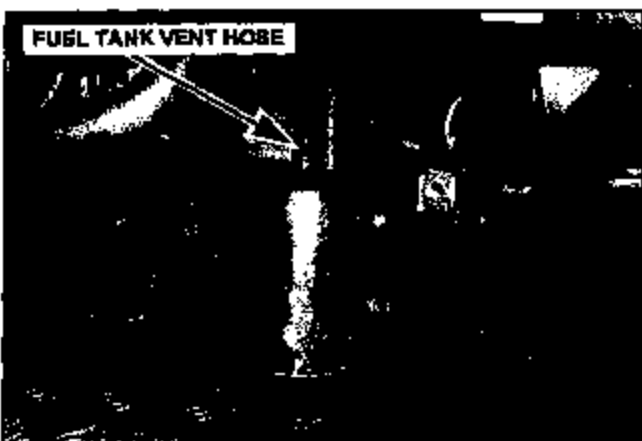
**TIP:** Using a flexible rubber hose makes removing all of the fuel much easier.

2. Remove the right lower floor skirt.



3. Detach the EVAP canister from its frame mounting point and move it to the side to provide access to the rear of the fuel tank.

4. Disconnect the fuel tank vent hose from the EVAP canister.

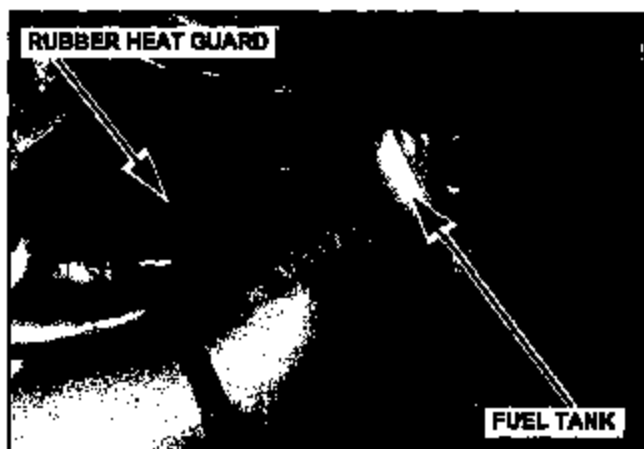


5. Move the rubber heat guard out of the way. Push in on the rear of the fuel tank with your hand. (See photo below.)

- If a loud "pop" sound is heard and the tank surface remains slightly indented, the fuel tank has been manufactured correctly.

Reassemble all components in the order of disassembly and proceed to the IDENTIFICATION section.

- If no "pop" sound is heard, proceed to Step 6 below.

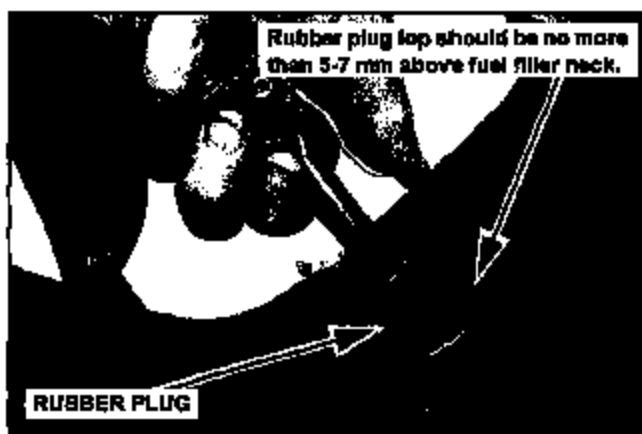


6. **NOTE:** During this procedure, gasoline vapor will escape through the cutouts in the fuel tank neck. Keep all ignition sources away and wear eye protection.

Insert the supplied rubber plug into the fuel filler opening as shown in the photo below. The top of the rubber plug should be no more than 5-7 mm above the top of the fuel filler neck. Using an OSHA approved air gun, discharge air into the fuel tank for no more than 5 seconds. (Make sure the nozzle tip is inserted completely in the plug hole. Air line pressure should be 85 psi to 125 psi.)

**WARNING**  
Gasoline vapor is highly flammable and explosive and you can be burned if it ignites.

- Keep heat, sparks and flame away.
- Work in a well ventilated area.



7. If a loud "pop" sound is heard from the rear area of the tank, discontinue the air. Push in on the rear area of the tank with your hand. You should hear the loud "pop" sound again and the tank surface should remain slightly indented. Again, using an OSHA approved air gun, discharge air into the fuel tank for no more than 5 seconds. The loud "pop" sound should be heard again. If so, the fuel tank has been manufactured correctly. Proceed to the IDENTIFICATION section.

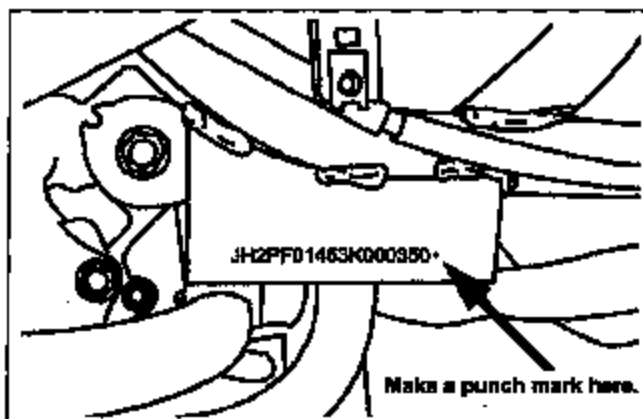
• If no "pop" sound is heard after 5 seconds, discontinue the air. The fuel tank has not been manufactured correctly and needs to be replaced. Proceed to Step 8 below.

8. Following the Service Manual procedures, remove and replace the fuel tank.

9. Using a pry bar, destroy the old tank by deforming the filler neck on the old, improperly manufactured fuel tank. Proceed to the IDENTIFICATION section.

### IDENTIFICATION

After you have completed the Inspection Procedure, make a punch mark next to the last digit of the VIN as shown below.



### PARTS INFORMATION

Do not order the indicated Safety Recall parts at this time. Please complete the inspection of indicated units before determining that parts are required.

Initial parts will be automatically allocated by American Honda based on the number of units invoiced/retailed by your dealership. After initial

allocations are completed, you will be advised of open order procedures.

#### Tank set, fuel

H/C: 7759426

P/N: 06171-MCT-305

#### Contains:

- (1) Tank, complete fuel
- (1) Nut, flange 6 mm

#### Fuel tank (Installation) set

H/C: 7754070

P/N: 06170-MCT-000

#### Contains:

- (1) Packing, base
- (1) Rubber fuel pump unit
- (2) Washer, sealing 12 mm
- (1) Band, wire

#### Tapered rubber plug

(Included with Service Bulletin)

1 5/8" x 1 3/16" x 1"

1/4" hole in center

Mc Master-Carr P/N: 9545K33

### WARRANTY INFORMATION

This Safety Recall will be in effect until all units have been inspected according to this Service Bulletin, regardless of the date of purchase.

Normal warranty claim submission requirements apply. If your inspection involved the replacement of any parts not listed above, call TechLine for claim filing instructions. After completing the Recall, submit one warranty claim per unit with the following information:

NOTE: If TechLine has provided you with different claim filing instructions, file your claim per those instructions. You should not file two claims.

#### Fuel Tank Inspection

Template: P26A

Flat Rate Time: 0.5 hour

#### Fuel Tank Inspection & Replacement

Template: P26B

Flat Rate Time: 2.5 hours

TEXT OF CUSTOMER LETTER

April 2004

**IMPORTANT SAFETY RECALL NOTICE**

Dear Silver Wing Owner:

This notice is sent to you in accordance with the requirements of the National Traffic and Motor Vehicle Safety Act.

**What is the reason for this notice?**

Honda Motor Co., Ltd. has decided that a defect relating to motor vehicle safety exists in certain 2003 model year Silver Wings (FSC600). Some fuel tanks were improperly manufactured and do not meet material strength specifications. Engine vibration or riding on bumpy roads could cause these tanks to crack and leak. A fuel leak in the presence of an ignition source could result in a fire.

**What should you do?**

Call any authorized Honda scooter dealer and make an appointment to have your Silver Wing inspected. The dealer will perform an inspection procedure that identifies defective fuel tanks. If your fuel tank fails the inspection, the dealer will replace it with an updated fuel tank. This work will be done free of charge.

**Who to contact if you experience problems.**

If you are not satisfied with the service you receive from your Honda dealer, you may write to:

American Honda Motor Co., Inc.  
Motorcycle Customer Support  
Mail Stop 100-4W-5B  
1919 Torrance Blvd.  
Torrance, CA 90501-2748

If you believe that American Honda or the dealer has failed or is unable to remedy the defect in your motorcycle, without charge, within a reasonable period of time (60 days from the date you first contact the dealer for a repair appointment), you may submit a complaint to:

Administrator  
National Highway Traffic Safety Administration  
400 Seventh Street, SW  
Washington, DC 20590

Or call the toll-free Safety Hotline at (888) 327-4236.

**What to do if you feel this notice is in error.**

Our records show that you are the current owner of a 2003 FSC600 involved in this recall. If this is not the case, or the name/address information is not correct, please fill out and return the enclosed, postage-paid Information Change Card. We will then update our records.

**If you have questions.**

If you have any questions about this notice, or need assistance with locating a Honda dealer, please call Motorcycle Customer Support at (858) 784-1870. You may also visit our Web site at [www.hondamotorcycle.com](http://www.hondamotorcycle.com) and click on "find a dealer" to locate a Honda dealer who can assist you.

We apologize for any inconvenience this campaign may cause you.

Sincerely,

American Honda Motor Co., Inc.  
Honda Motorcycle Division