



March 24, 2004

TO: All Coachmen RV Company Dealers

RE: Safety Recall 04V-119

Dear Coachmen Dealer:

This notice is sent to you in accordance with the requirements of the National Traffic and Motor Vehicle Safety Act.

Coachmen RV Company has decided that a defect which relates to motor vehicle safety exists in 2004 and 2005 Freelanders 3100 SO Class C mini-motorhomes built from October 6, 2003 through February 12, 2004.

On affected vehicles, the 12-volt wiring harness that is routed between the back of the refrigerator and the refrigerator cabinet may come in direct contact with the refrigerator burner tube and cooling unit. If contact occurs, the wire insulation material may melt due to the operating temperature of the burner tube and cooling unit, which could result in a fire. **DO NOT OPERATE THE REFRIGERATOR IN AFFECTED VEHICLES UNTIL THE 12-VOLT WIRE HARNESS HAS BEEN RELOCATED.**

Owners of suspect units will be notified in a letter instructing them to contact their Coachmen dealer to schedule an appointment to have their unit inspected, and if necessary, repaired. A copy of this letter is attached for your reference.

Please find attached repair instructions and information relating to the preparation and submission of claims for reimbursement.

Thank you for your prompt attention to this matter. If you have any questions or require assistance, please contact your Regional Service Manager at 1-888-516-3569.

Sincerely,

COACHMEN RECREATIONAL VEHICLE COMPANY

Attachments

REPAIR PROCEDURE FOR RECALL 04V-119

Following is the procedure to re-route electrical wiring in the refrigerator cabinet in affected 2004/2005 Freelanders 3100 mini-motorhomes.

1. Turn LP valve off at LP tank on unit.
2. Disconnect power supply:
 - a. Turn coach and chassis battery disconnect switches off.
 - b. Turn generator off and unplug power supply cord (120V).
3. Remove refrigerator sidewall vent.
4. While standing outside of unit, looking through refrigerator sidewall vent opening perform following:
 - a. Unplug refrigerator.
 - b. Disconnect LP gas line to refrigerator.
 - c. Disconnect 12V wires connected to refrigerator.
5. Go inside of unit, stand in front of refrigerator and perform following:
 - a. Remove refrigerator top panel trim cover with fingers.
 - b. Remove two (2) screws from top of refrigerator.
 - c. Open large refrigerator door.
 - d. Remove two (2) screws from bottom of refrigerator.
 - e. Remove refrigerator from cabinet and set it aside.
6. Remove insulation from refrigerator cabinet.
7. Inspect electrical wiring behind refrigerator cabinet.
8. If there is any wiring that runs across back of refrigerator cabinet (secured to sidewall diagonally or horizontally) that is directly behind where refrigerator cooling coil or heat tube are located, then perform the following: *(Go to step 9 if wiring is not run as described above)*
 - a. If porch light wires are directly behind any part of refrigerator, add extensions to 12V wires to allow wires to be routed above refrigerator so wiring cannot contact refrigerator coil or burner. *(See attachment I)*
 - b. Use large loom clamps and secure 12V electrical wires vertically every 3" to wood cleat in forward back corner of refrigerator cabinet. *(See attachment II)*
 - c. Verify that 12V wires do not stick out past thickness of wood cleat and have no possibility of contacting refrigerator coil and burner tube. Collapse metal clamps if needed to secure wires firmly.

- d. Remove hamper located in bathroom and perform the following:
 - i. Disconnect 4" heat duct from side of furnace.
 - ii. Locate proper 120V electrical wires behind hamper against sidewall (1 yellow (A/C) and 1 white).
 - iii. Cut wires. Add proper length (2-3 ft.) using dummy receptacles (2 per wire) on each end extension. Make sure extension allows for enough length to extend wires in refrigerator cabinet so that they can run next to wood cleat in back of refrigerator cabinet. *(See attachment III)*
 - iv. Once electrical wires are connected to receptacles secure dummy receptacles to sidewall above wheel well and below outside shower (if equipped).
 - v. Re-connect 4" heat duct to furnace and reinstall hamper.
 - e. Use small metal loom clamps and secure 120V electrical wires vertically every 10-12" to wood cleat in back corner of refrigerator cabinet. *(See attachment IV)*
 - f. Use small metal loom clamps and secure 120V electrical wires horizontally across top of refrigerator cabinet every 10-12" minimum to sidewall, making certain that wires are not located directly behind refrigerator and are above refrigerator storage shelf above refrigerator and cannot contact refrigerator coil or burner tube. *(See attachment V)*
 - g. Once completed, skip to step #10.
9. If there is no wiring that runs across back of refrigerator cabinet (where contact cannot occur with the cooling coil or burner tube) then proceed with steps below:
- a. Use large loom clamps to secure 12V electrical wires vertically every 3" to wood cleat in forward back corner of refrigerator cabinet. *(See attachment II)*
 - b. Verify that 12V wires do not stick out past thickness of wood cleat and do not have possibility of contacting refrigerator coil burner tube. Collapse clamps if needed to secure wires firmly.
 - c. Use small loom clamps and secure 120V electrical wires vertically every 10-12" to wood cleat in back corner of refrigerator cabinet. *(See attachment IV)*
 - d. Use small metal loom clamps and secure 120V electrical wires horizontally across top of refrigerator cabinet every 10-12" minimum to sidewall, making certain that wires are not located directly behind refrigerator and are above refrigerator storage shelf above refrigerator and cannot contact refrigerator coil or burner tube *(See attachment V)*
10. Re-inspect refrigerator cabinet and make certain that there are no wires directly behind refrigerator in cabinet which can contact the refrigerator cooling unit coil and burner tube.
11. Re-apply insulation with spray adhesive in refrigerator cabinet.

12. Reinstall refrigerator in cabinet. Stand in front of refrigerator and perform following:
 - a. Slide refrigerator into cabinet.
 - b. Remove refrigerator top panel trim cover with fingers.
 - c. Secure two (2) screws from top of refrigerator in existing holes.
 - d. Open refrigerator door.
 - e. Secure two (2) screws from bottom of refrigerator in existing holes.
13. While standing outside of unit, looking through refrigerator sidewall vent opening perform following:
 - a. Re-connect LP gas line to refrigerator.
 - b. Plug refrigerator into 120V receptacle.
 - c. Re-connect 12V wires connected to refrigerator.
14. Turn LP valve on at LP tank.
15. Use soapy water mixture and spray onto gas connection to refrigerator.
16. Verify there are no bubbles at LP connection. If there is, re-tighten fittings and check again.
17. Reinstall refrigerator sidewall vent.
18. Re-connect power supply by:
 - a. Turning on the battery disconnect switches and plug in power supply cord (120V).
19. Perform LP drop pressure test to verify that there are no LP leaks.
20. Verify proper operation of refrigerator.

Any questions or concerns, please contact your Coachmen Regional Service Manager.

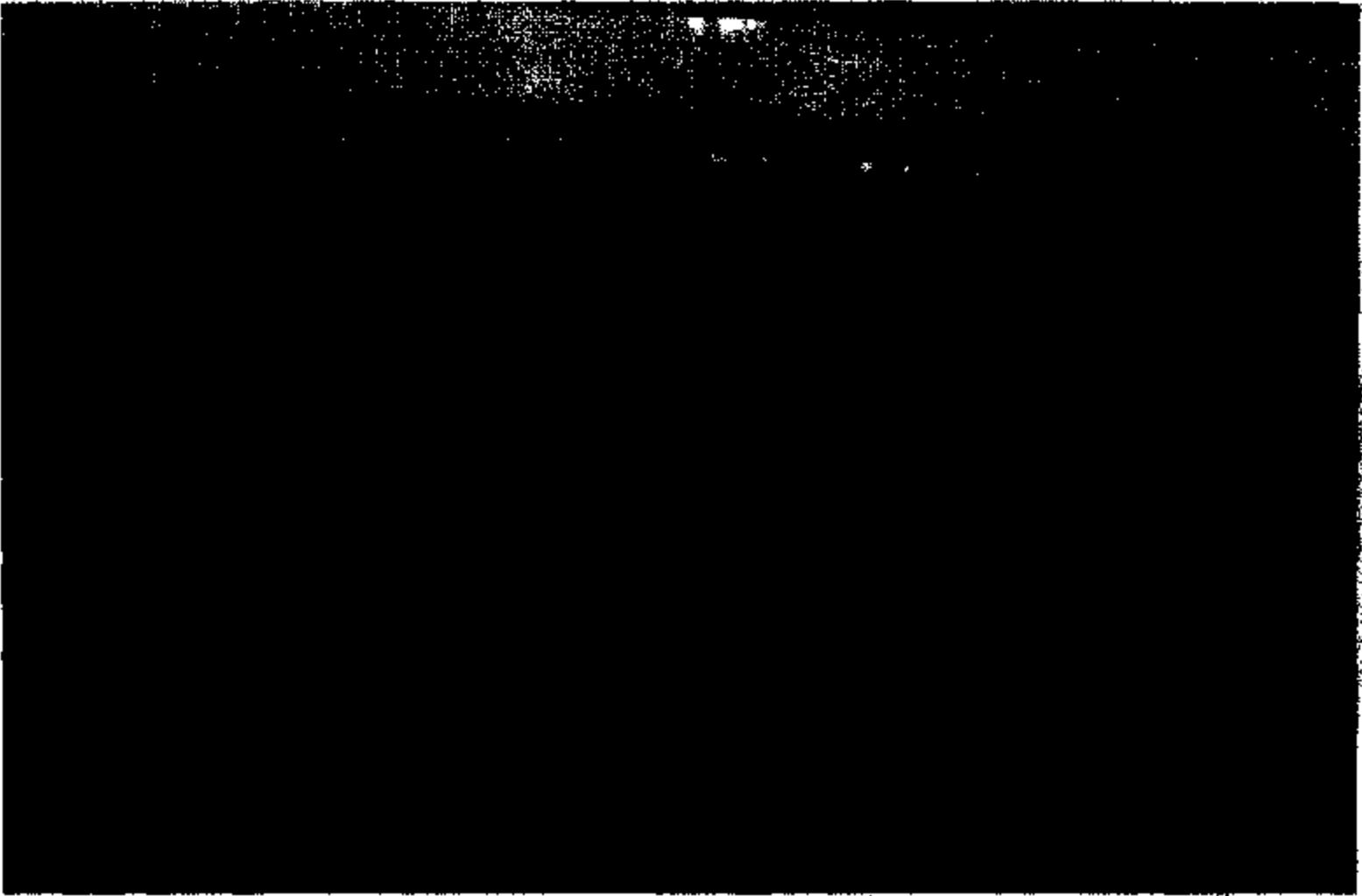
MATERIAL LIST

(RECALL KIT PART NO. 961004)

<i>Quantity</i>	<i>Description</i>
17	Clamp, loom 1-1 1/2" vinyl coated steel
11	Clamp, loom 3/4" vinyl coated steel
4	Recept, blank surface mount 20A white with wood screws
3 ft.	Wire, CU 12-2 w/g romex UL type NMB (RVIA-yellow)
3 ft.	Wire, CU14-2 w/g romex UL type NMB (RVIA-white)
3 ft.	Wire, CU 12-2 w/g romex CSA type NMD7 (CSA-yellow)
3 ft.	Wire, CU 14-2 w/g romex CSA type NMD7 (CSA-white)

ATTACHMENT

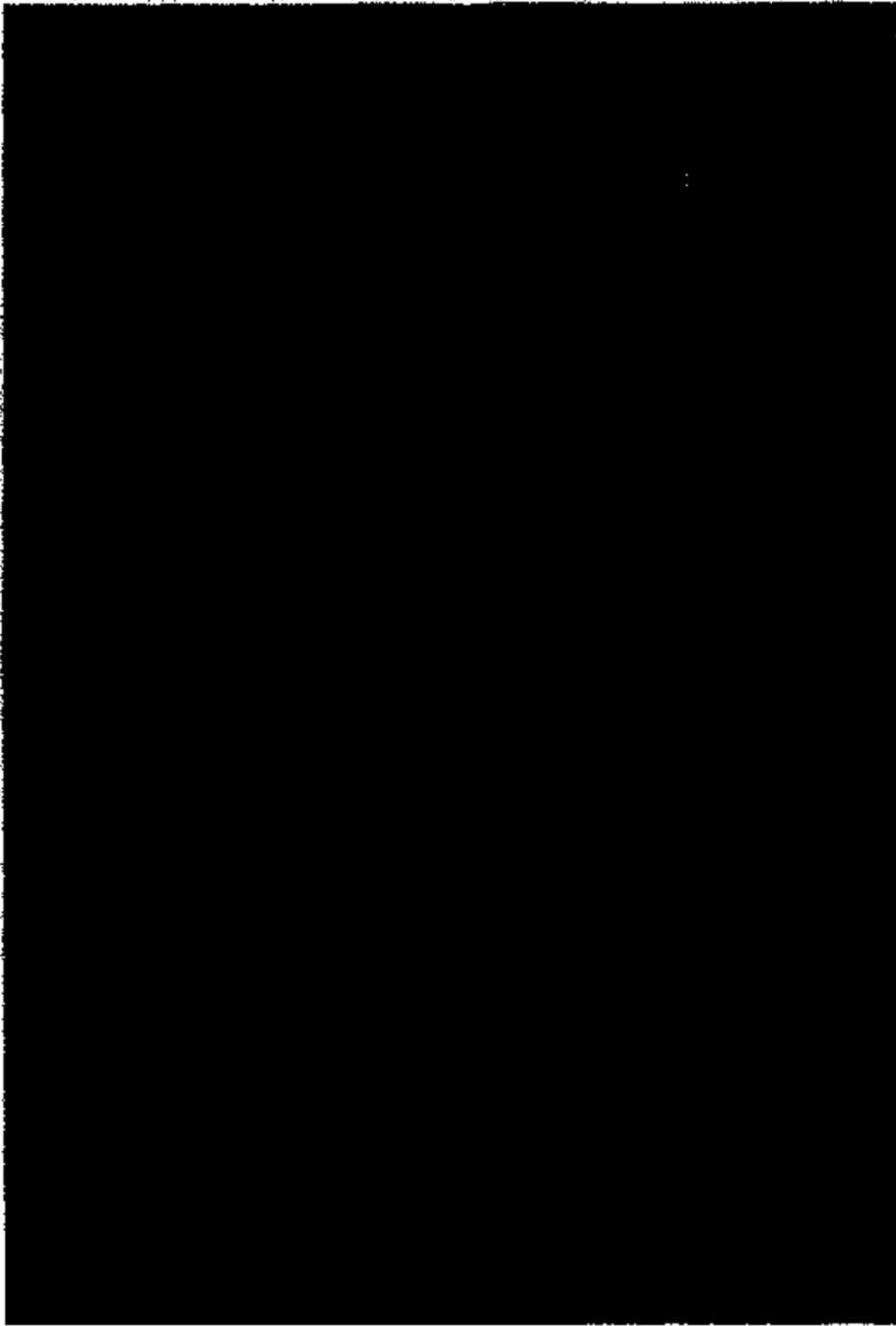
I



12 V PORCH LIGHT WIRES

ATTACHMENT

II



12 V WIRE SECURITY

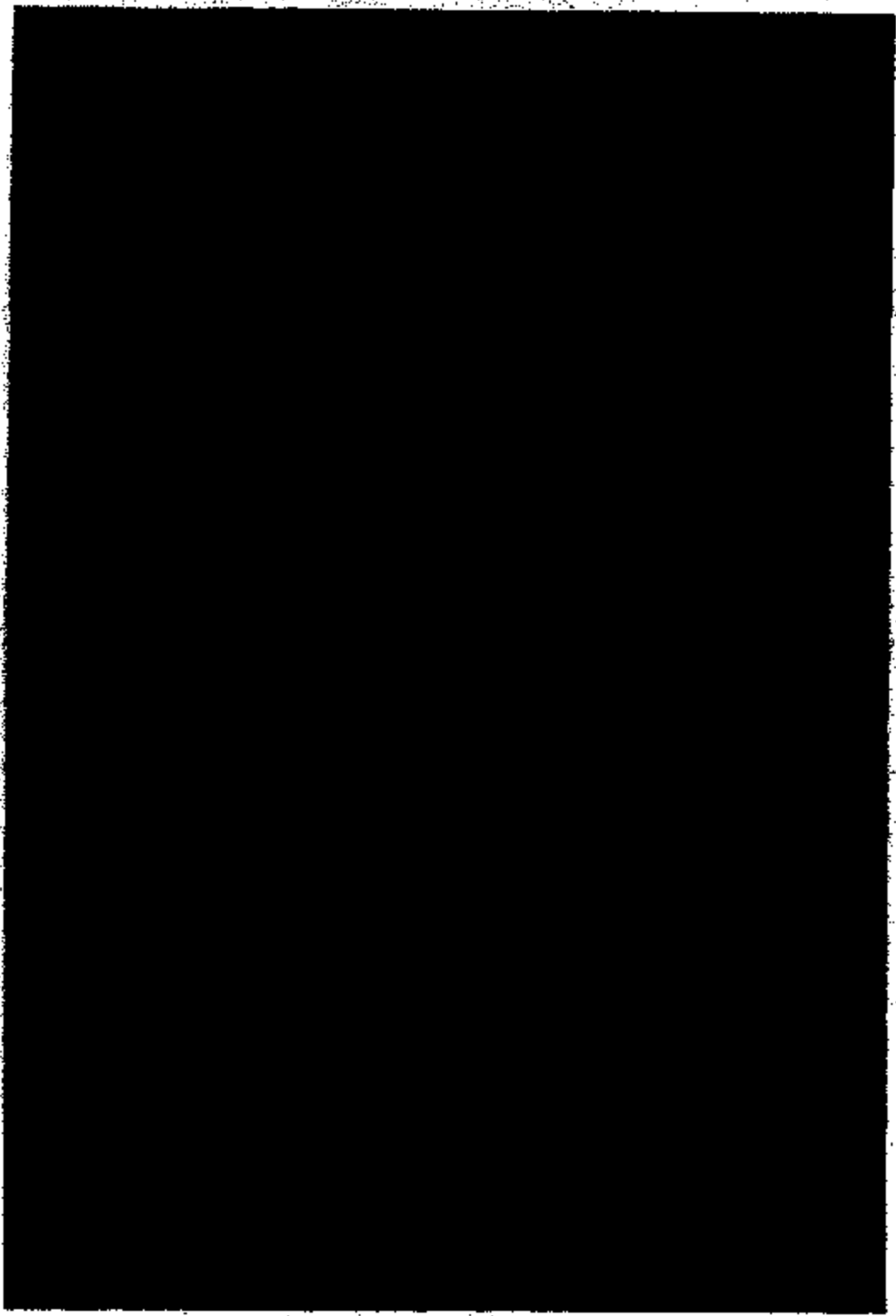
ATTACHEMENT
III



110 V WIRE EXTENSION BEHIND HAMPER

ATTACHEMENT

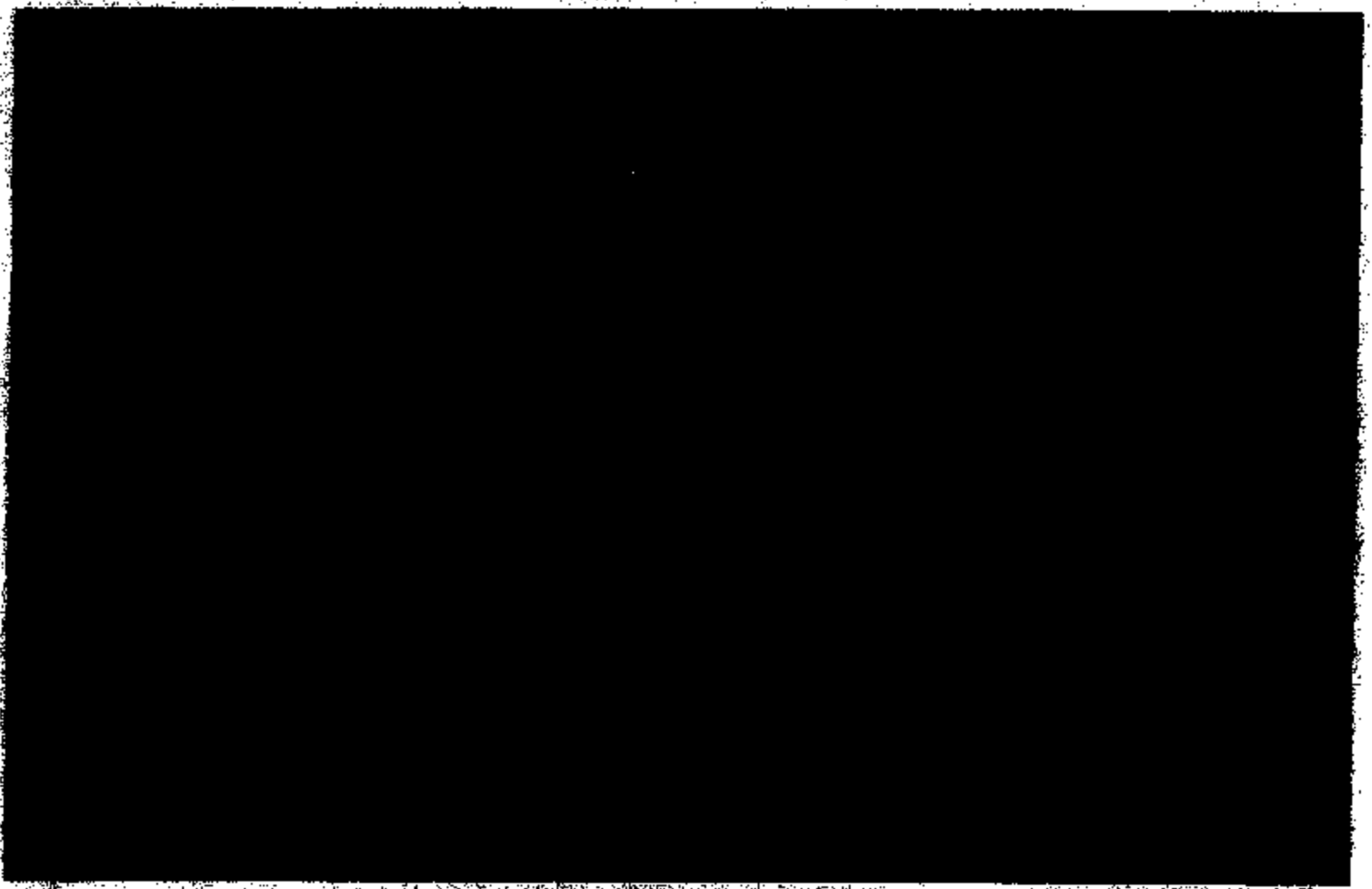
IV



110 V WIRE SECUREMENT

ATTACHMENT

V



**HORIZONTAL WIRES BEHIND OVERHEAD
CABINET SECURED TO BACK WALL**

CLAIM FILING PROCEDURE

1. Complete all information required on a Coachmen warranty claim.
2. Use program code: RE
3. Use condition code: 49
4. Use the following flat rate codes: 7597Z 2.0 hrs.

5. Claim materials under the parts section of the claim.
6. Submit the completed claim to Coachmen RV Company electronically through Coach-Link.

March 29, 2004

Dear Coachmen Owner:

This notice is sent to you in accordance with the requirements of the National Traffic and Motor Vehicle Safety Act.

Coachmen RV Company has decided that a defect which relates to motor vehicle safety exists in 2004 and 2005 Freelander 8100 SO Class C mini-motorhomes built from October 6, 2003 through February 12, 2004.

SAFETY DEFECT

On affected vehicles, the 12-volt wiring harness that is routed between the back of the refrigerator and the refrigerator cabinet may come in direct contact with the refrigerator burner tube and cooling unit. If contact occurs, the wire insulation material may melt due to the operating temperature of the burner tube and cooling unit, which could result in a fire. **DO NOT OPERATE THE REFRIGERATOR IN YOUR VEHICLE UNTIL THE 12-VOLT WIRE HARNESS HAS BEEN RELOCATED.**

REPAIRS

PLEASE TAKE YOUR UNIT PROMPTLY TO YOUR COACHMEN DEALER. At no charge to you, the Coachmen dealer will relocate the 12-volt wire harness to eliminate the potential for contact with the refrigerator burner tube and cooling unit. The necessary repairs should not take more than two (2) hours.

REFUNDS

If you have paid to have this service performed prior to receiving this notice you can receive a full refund. Please mail your paid original invoice or receipt to Coachmen RV Service, P.O. Box 1000, Middlebury, Indiana 46540.

CHANGED ADDRESS OR SOLD THE VEHICLE?

Please fill out the enclosed pre-paid postcard and mail it to us if you have changed your address or sold the vehicle.

Any vehicle lessor receiving this recall notice must forward a copy of this notice to the lessee within ten days.

If your dealer does not make the required repair promptly and without charge, you may contact Coachmen Customer Service at 1-800-453-8064. You also may contact the National Highway Traffic Safety Administration, 400 Seventh Street SW, Washington, DC 20590 or call the toll-free Auto Safety Hotline at 1-888-327-4236.

We regret the inconvenience this situation may have caused you. However, Coachmen RV Company believes in the early detection and immediate correction of potential concerns. Thank you for your understanding.

Sincerely,

COACHMEN RECREATIONAL VEHICLE COMPANY, LLC