

# DAIMLERCHRYSLER

## **SAFETY RECALL – CERTIFICATION LABEL INFORMATION**

Dear Dodge Ram Truck Owner:

This notice is sent to you in accordance with the requirements of the National Traffic and Motor Vehicle Safety Act.

DaimlerChrysler Corporation has decided that some 2004 model year Dodge Ram 1500/2500 pick-up trucks fail to conform to Federal Motor Vehicle Safety Standard (FMVSS) No. 120 – Tire Selection and Rims for Motor Vehicles Other Than Passenger Cars.

***The problem is...***

The certification label on your truck (identified on the enclosed form) lists incorrect tire/rim size and inflation pressure information. This information, when used with the weight ratings on the label, establishes vehicle loading limits. Installing the incorrect tire/rim sizes and loading the vehicle to the weights shown on the label can cause tire failure and result in a crash without warning.

***What you must do to ensure your safety...***

- We ask that you apply the enclosed label overlay so that it covers the original incorrect information as described on the reverse side of this letter.
- If preferred, you may contact your dealer to schedule a service appointment for installation of the label overlay. The service will be provided free of charge and should only take a few minutes to complete. However, additional time may be necessary depending on how dealer appointments are scheduled and processed. Bring the enclosed label overlay and form with you to your dealer. The form identifies the required service to the dealer.

***If you need help...***

If you have questions or concerns which your dealer is unable to resolve, please contact DaimlerChrysler at 1-800-853-1403.

If you have already experienced the problem described above and have paid to have it repaired, you may send your original receipts and/or other adequate proof of payment to the following address for reimbursement: DaimlerChrysler, P.O. Box 610207, Port Huron, MI 48061-0207, Attention: Reimbursement.

If your dealer fails or is unable to remedy this noncompliance without charge and within a reasonable time, you may submit a written complaint to the Administrator, National Highway Traffic Safety Administration, 400 Seventh Street, S.W., Washington, DC 20590, or call the toll-free Auto Safety Hotline at 1-888-327-4236.

We're sorry for any inconvenience, but we are sincerely concerned about your safety. Thank you for your attention to this important matter.

(over)

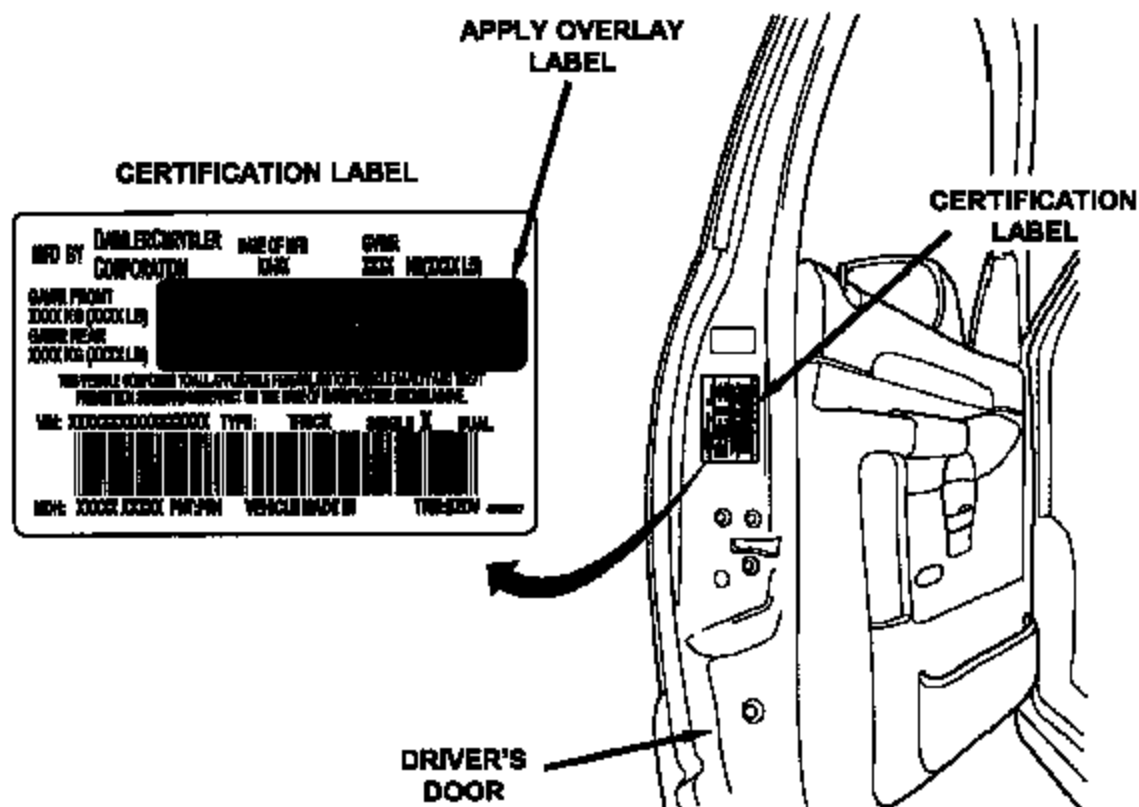
***Buckle up  
for Safety***

Customer Services Field Operations  
DaimlerChrysler Corporation  
D24

Note to lessors receiving this recall: Federal regulation requires that you forward this recall notice to the lessee within 10 days.

## Installation Instructions for the Certification Label Overlay

1. **Open the driver's door and locate the Certification Label on the driver's door as shown (Figure 1).**
2. **Clean the existing certification label by wiping it with a household cleaner to remove any dirt, oil residue or grease.**
3. **Remove the information correction label overlay from its paper backing and carefully install it on the Certification Label covering the original information (Figure 1). Firmly press and smooth the overlay label to the surface of the Certification Label to ensure good adhesion.**



### Figure 1 – 1500 Series Shown