

**FAULKNER, GARMHAUSEN, KEISTER & SHENK**  
A LEGAL PROFESSIONAL ASSOCIATION  
COURTVIEW CENTER - SUITE 300  
100 SOUTH MAIN AVENUE  
SIDNEY, OHIO 45386  
(937) 492-1271  
FAX: (937) 488-1306  
www.fgka-law.com

NINGER, OHIO  
(419) 829-3677

FT. LORAMIE OFFICE  
31 S. MAIN STREET  
P.O. BOX 320  
FT. LORAMIE, OHIO 46646  
(937) 296-3663  
FAX: (937) 886-3663

HARRY N. FAULKNER  
JOHN N. GARMHAUSEN  
RALPH F. KEISTER  
JAMES R. SHENK\*  
MICHAEL A. STAUDT  
JAMES L. TREHMAN\*\*  
THOMAS J. POTTS  
DANIEL A. BENEMAN  
WILLIAM E. LANG  
DAVID B. SHUFFELTON  
BRYAN A. NIEMEYER  
JOHN N. DEBOB

\*ALSO ADMITTED IN FLORIDA  
\*\*ALSO ADMITTED IN INDIANA

SENDER'S E-MAIL  
dbs@fgka-law.com

October 21, 2004

04V-519  
(16 pages)

**VIA FACSIMILE AND  
CERTIFIED U.S. MAIL,  
RETURN RECEIPT REQUESTED**

Mr. George H. Person  
National Highway Traffic Safety Administration  
Recall Management Division  
400 7<sup>th</sup> Street, S.W.  
Washington, DC 20590

Re: **Champion Bus, Inc.**  
**Recall No.: 03V-458**

2004 OCT 28 10:10:00  
RECEIVED

Dear Mr. Person:

As a follow-up to the Defect and Non-Compliance Report originally filed in connection with the above-referenced recall campaign, Champion Bus, Inc. ("Champion") has determined through its continuing investigation that additional 2000, 2001, and 2002 bus models contain the potential sub-floor crossmember frame cracks that resulted in the initiation of the recall campaign. The models that are subject to this expanded recall campaign are the Challenger, CTS, Defender, and General models. Champion has determined that an additional 1,263 buses are subject to this recall campaign. These 1,263 buses were manufactured during the period between August, 1999 and July, 2002.

In addition, Champion has determined through its continuing investigation that a related defect involving the floor risers used on certain 2003 and 2004 models of certain "flat floor" buses also may experience cracks on the floor risers. The models containing the "flat floor" that are also subject to this expanded recall campaign are the Challenger and Corporal models. Champion has determined that an additional 299 buses containing a "flat floor" are subject to this recall campaign. These 299 buses were manufactured during the period between August, 2002 and July, 2004.

These additional 1,552 buses have been added to the recall campaign because Champion recently determined that these additional models also use the light gauge steel for the floor frame

Mr. George H. Person

October 21, 2004

Page 2

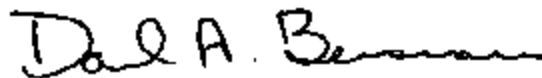
crossmember. The use of this light gauge steel may cause cracks to develop on the sub-floor crossmembers, which could compromise the structural integrity of the bus body in the event of a crash.

Champion has prepared the owner notification letter attached hereto as Exhibit "A" to be sent to the registered owners of the 1,552 additional motorhomes subject to this recall campaign. This owner notification letter is substantially similar to the owner notification letter sent in connection with the initial phase of the recall campaign. Unless NHTSA objects to the substance or format of the owner notification letter, Champion shall send the letter to the registered owners within the next fourteen (14) days.

The repair procedures for this recall campaign have been modified in order to address the procedures to be implemented for buses that only have cracks in the floor risers (see Service Information Document attached hereto as Exhibit "B"), for buses that only have cracks in the sub-floor crossmembers (see Service Information Document attached hereto as Exhibit "C"), and for buses that contain cracks in both the sub-floor crossmembers and the floor risers (See Service Information Document attached hereto as Exhibit "D"). The attached Service Information Documents have been provided to all of Champion's authorized dealers and service centers that will be implementing the repairs in connection with this recall campaign.

If you have any questions regarding the expanded scope of the recall campaign or the modified repair procedures, please feel free to contact me.

Very truly yours,



Daniel A. Bensman

dja

Enclosures

cc: Champion Bus, Inc. (via fax)  
Mr. Walter L. Bennett (via fax)  
Mr. John M. Garmhausen

**EXHIBIT "A"**

October 13, 2004

«CUSTOMER»

«STREET»

«CITY», «ST» «ZIP»

VIN#: «CHASSIS\_VIN\_»

**SAFETY CAMPAIGN NOTICE**

**NHTSA Reference Number 03V-458**

This notice is sent to you in accordance with the requirements of the National Traffic and Motor Vehicle Safety Act.

Champion Bus, Inc. has determined that cracks may occur under some road conditions in the sub-floor frame cross members and risers of certain Champion Challenger, CTS, Defender and General models of 2000, 2001, and 2002 model year buses. In addition, certain "Flat Floor" buses on Champion Challenger and Corporal models of 2003 and 2004 model year buses may experience cracks only on the floor risers.

As presently understood, the nature of the defect is due to light gauge steel used for the floor frame cross member that is located in the floor sub-frame, and some cases where the riser support gusset to puck channel is too short. It appears that some road conditions may cause cracks to develop on the lateral cross members (floor sub-frame) and on the risers of the sub-frame, at the rear of the bus from the first cross member in front of the rear axle. Cracks of this nature could compromise the structural integrity of the bus body in the event of a crash.

To determine if your vehicle(s) pertain to this notice, please inspect the crossmembers and risers for cracks in the area indicated on the attached diagrams. Call Champion's Service Department, phone number 1-800-331-5761, or 810-724-6474, Monday thru Friday from 8:00 A.M. to 5:00 P.M. with the above information. If determined that the repairs are necessary they will be performed free of charge and should take approximately two hours for the riser support repair and two to 16 hours for the crossmember repair. The time will vary depending on the number of crossmembers requiring repair.

If you experience difficulties with this procedure or are otherwise unable to comply with this notice, you may contact the Service Department at Champion Bus, Inc., 800-331-5761. If Champion Bus is unable to provide assistance for you, you may contact the Administrator of N.H.T.S.A., 400 Seventh Street, Washington, D.C. 20590 or toll free through the Auto Safety Hotline at 1-888-327-4236.

You may be eligible to receive reimbursement for the cost of obtaining a pre-notification remedy of a problem associated with this recall. For more information contact Champion Bus at 1-800-331-5761.

Federal Regulations require any lessor receiving this letter to forward it to the lessee within 10 days.

We apologize for any inconvenience this campaign may cause you. As always our first priority is the safety of the people using our products.

Sincerely,

Dick Cletcher  
Service Manager  
Champion Bus, Inc.



**Purpose:**

Determine if floor frame riser and or crossmembers require repair.

**Perform the Following:**

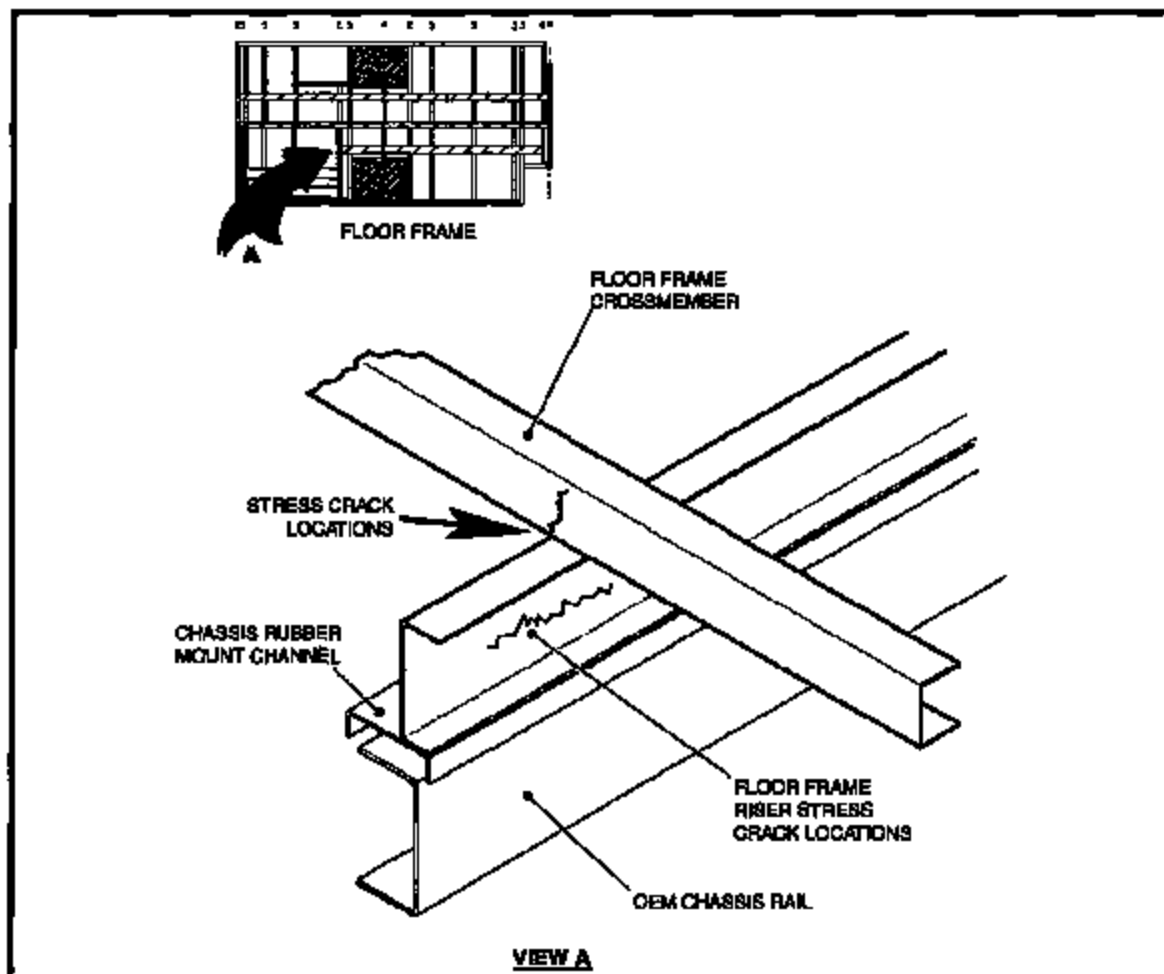
**Inspect:**

1. Raise vehicle on a lift.
2. With a light source inspect areas of frame crossmembers at riser junction for cracks (Refer to Fig. 1, below). Also look for cracks in Floor Frame Riser the cracks will appear horizontal.
3. IF CRACKS ARE PRESENT CONTACT THE SERVICE DEPARTMENT AT CHAMPION BUS FOR REPAIR INSTRUCTIONS:

Contact: Lee Schnoonover

Phone: (810) 724-6474, Fax: (810) 724-6478

Email: lees@championbus.com



 <b>CHAMPION</b> BUS INC. — a FLEETCOMER company —	<b>SERVICE INFORMATION DOCUMENT</b> <b>FLOOR FRAME RISER</b> <b>REINFORCEMENT INST'L</b> <b>(RISER ONLY)</b>	SID_2004-19 Revision: Date: 6/17/04
---	---	---

**Purpose:**

To add structural strength to cracked floor frame risers.

**Perform the Following:****REMOVE OR DISCONNECT**

1. Drive vehicle onto lift.
2. Disconnect negative battery cable from battery.
3. Raise vehicle and prep areas for weld. Remove any foam insulation and/or undercoating material from areas to be welded.
4. Remove OEM Puck Mount mounting nut and bolt.

**INSTALL OR CONNECT**

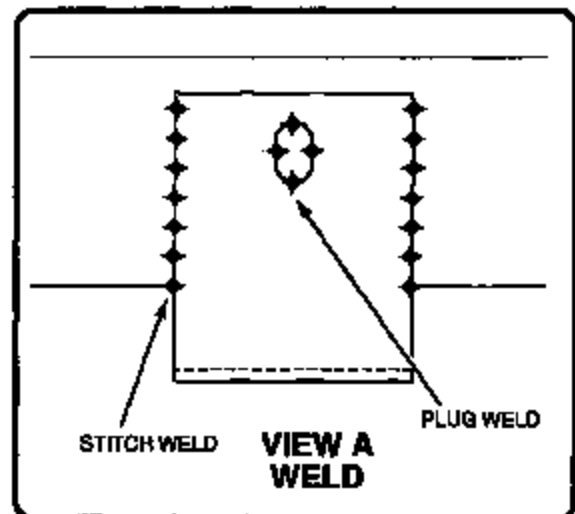
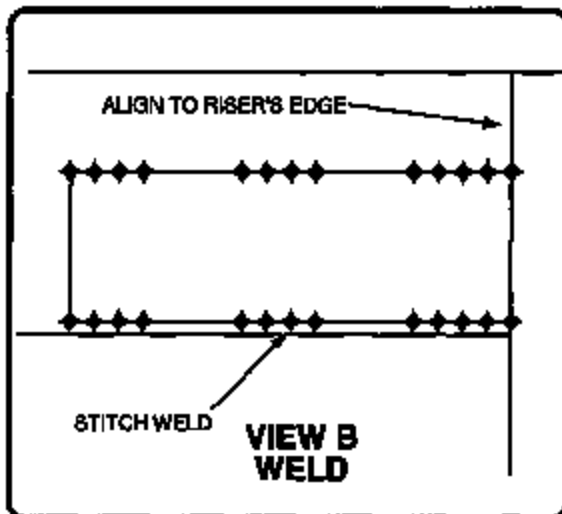
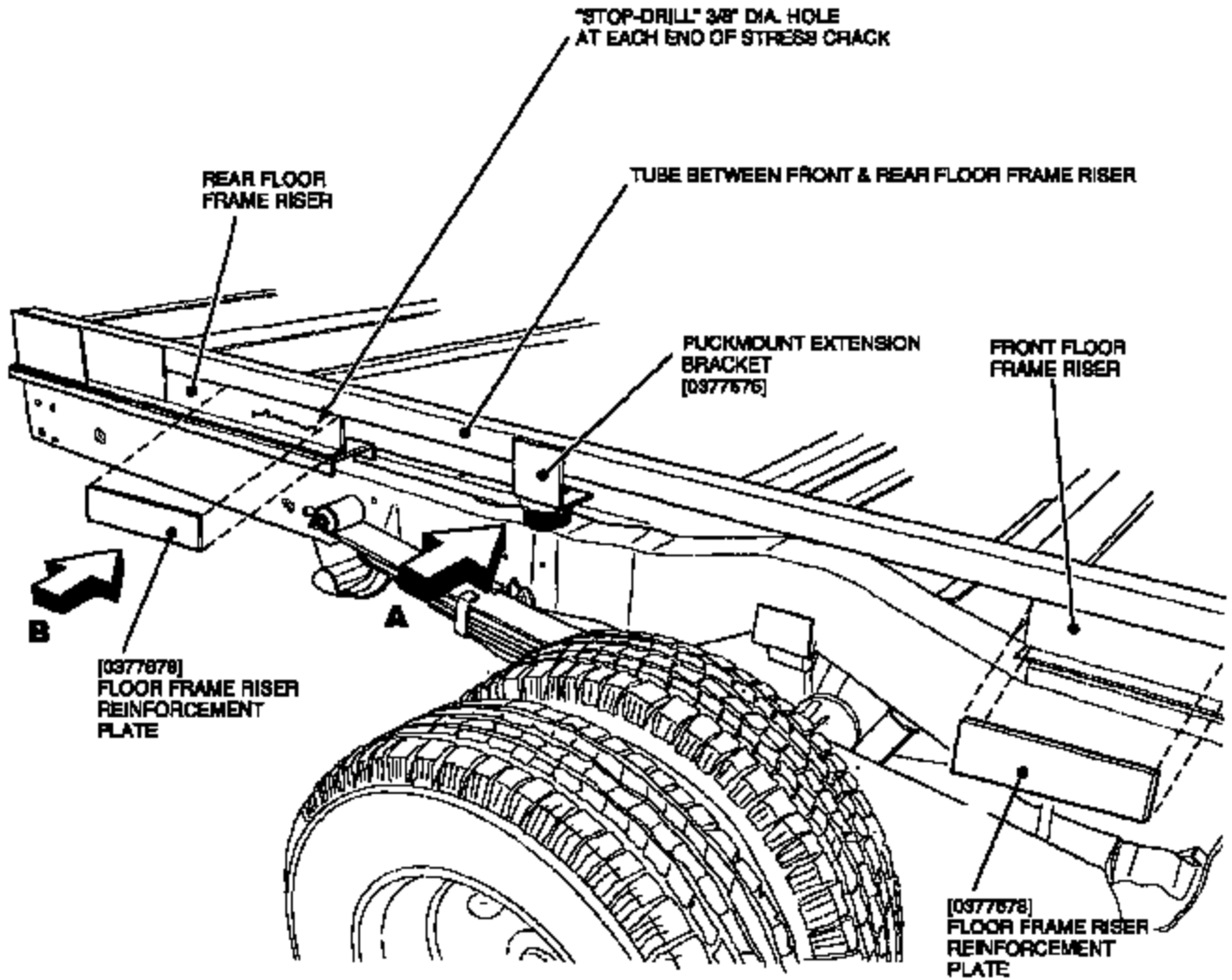
1. Install Extension Bracket (Part #0377575) on top of OEM Puck Mount with bottom flange's edge facing inboard. Align slot in bracket to hole in puck mount and push bracket's vertical flange up against Chassis Frame Rail.
2. Reinstall OEM Puck Mount's Bolt and Nut and tighten to 52 ft. lbs to secure.
3. Clamp Extension Bracket's vertical flange to Chassis Frame Rail and Plug and Stitch weld to secure.
4. Align Reinforcement Plate [Part No. 0377678] to front edge of Rear Floor Frame Riser, clamp, and weld according to (View B). Repeat for Front Floor Frame Riser with the exception of align plate to rear edge.



**CHAMPION**  
BUS INC.  
— TELEDOR COMPANY —

**SERVICE INFORMATION DOCUMENT  
FLOOR FRAME RISER  
REINFORCEMENT INST'L  
(RISER ONLY)**

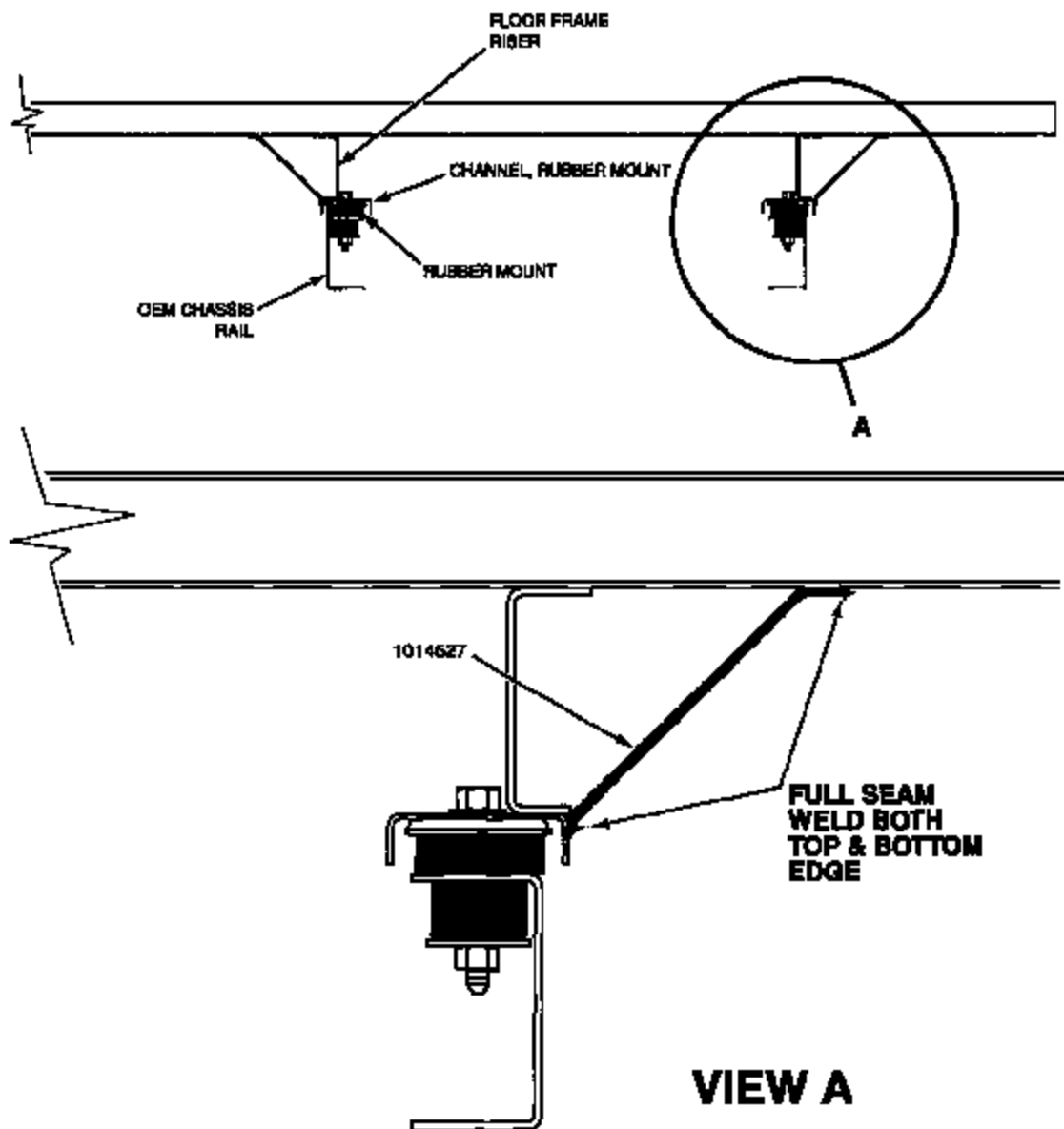
SID\_2004-19  
Revision:  
Date: 6/17/04





**INSTALL OR CONNECT**

1. At both sides of Floor Frame Riser, position one (1) 45°-angled piece of 3/16" Flat Stock between side of Puck Mount Channel and bottom of Floor Frame Crossmember.
2. With gloved hand apply push up on bracket for a tight fit and tack weld to hold position.
3. Apply a full seam weld to secure at both upper and lower edges.
4. Repeat operations 3 to 5 times depending on length of vehicle.





**SERVICE INFORMATION DOCUMENT  
STANDARD FLOOR FRAME CROSSMEMBER  
REINFORCEMENT INST'L  
(CROSSMEMBER ONLY)**

SID\_2004-22  
Revision:  
Date: 09/10/04

**Purpose:**

To add structural strength to cracked floor frame crossmembers.

**Perform the Following:**

 **REMOVE OR DISCONNECT**

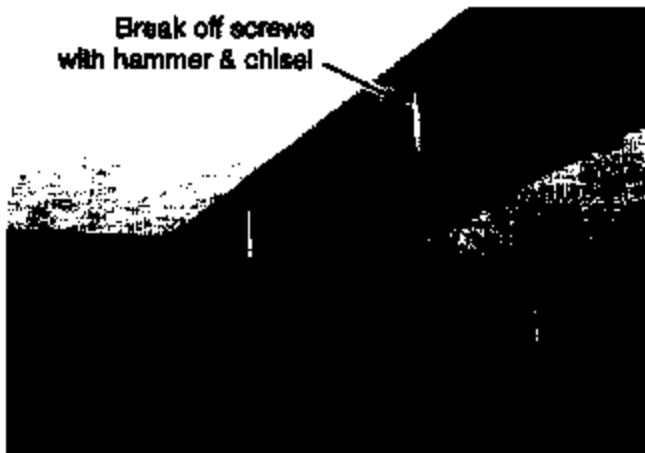
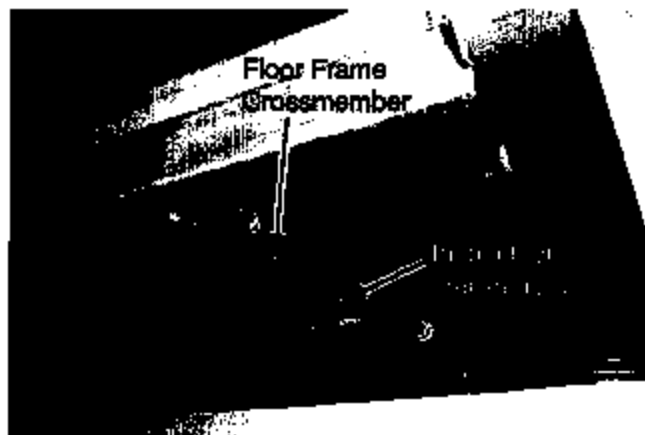
1. Drive vehicle onto lift.
2. Disconnect battery.
3. Raise vehicle and prep areas for weld. Remove any foam insulation and/or undercoating material from areas to be welded.

 **INSPECT**

4. Inspect Floor Frame Crossmembers for cracks at locations shown in photo.
5. With hammer and chisel knockoff screws to provide clearance for channel [Item 1]

 **ADJUST**

6. Position hydraulic jack or other similar tool under vehicle's cage and adjust back to level. Leave jack in place until repairs are completed.





**CHAMPION**  
BUS INC.  
— A TRITON CORP. COMPANY —

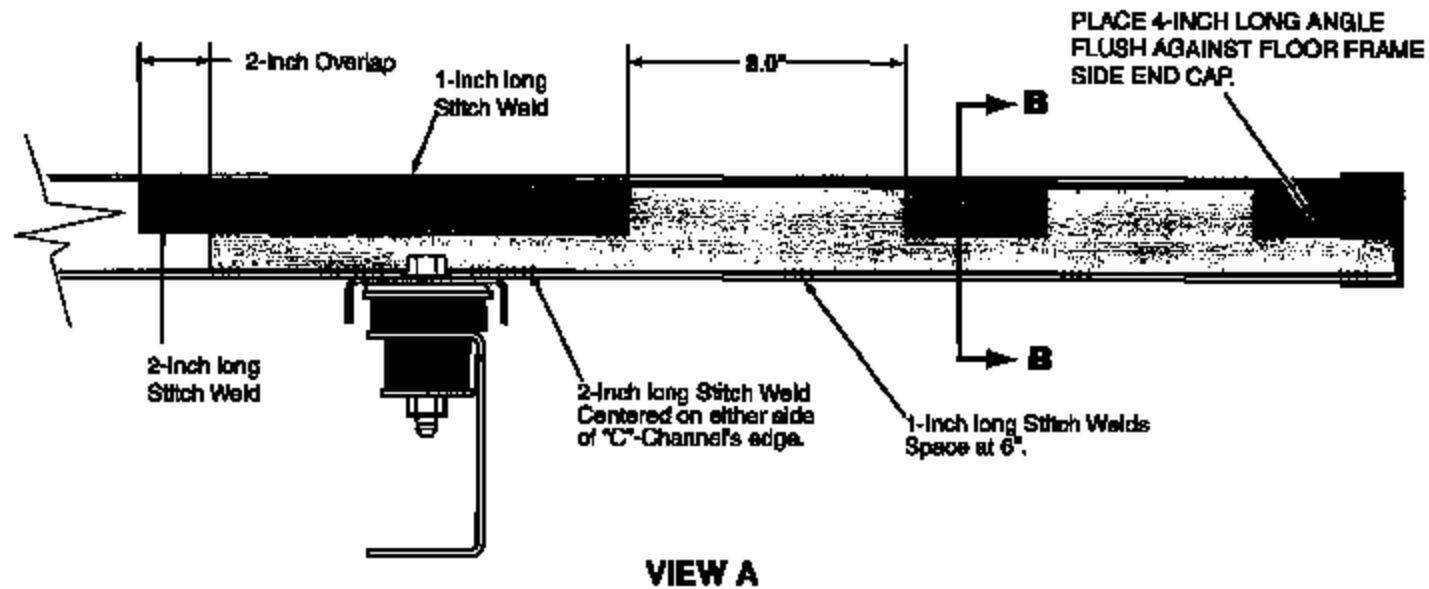
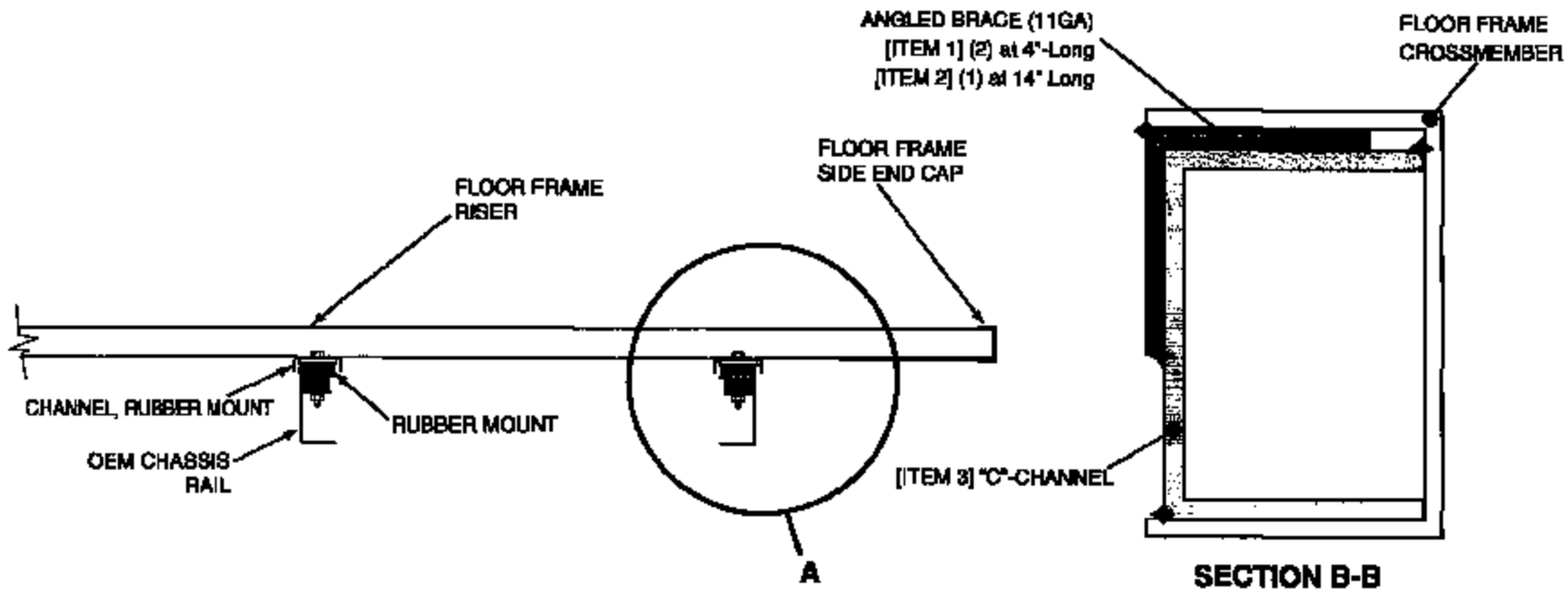
**SERVICE INFORMATION DOCUMENT  
STANDARD FLOOR FRAME CROSSMEMBER  
REINFORCEMENT INST'L  
(CROSSMEMBER ONLY)**

SID\_2004-22  
Revision:  
Date: 09/10/04

**INSTALL OR CONNECT**


7. Install Channel [Item 2] into Floor Frame Crossmember, clamp to hold position. On bottom edge only apply 1-inch long stitch welds space at 6-inches apart to secure..
8. Position 4" long angle piece [Item 1] onto top edge of previously installed channel and butt up against Floor Frame End Cap. Clamp to hold position and apply 1" long stitch welds to secure.
9. Install second 4" long angle piece [Item 2] 8" inboard from previously installed angled piece, clamp to hold position and apply 1" long stitch welds to secure.
10. Install 14" long angled piece [Item 3] onto Channel's [Item 1], top edge, align so it's inboard edge overhangs Channel's inboard edge by 2". Apply 1" long stitch welds to secure.
11. Apply two 2" long stitch welds to Channel [item 1]. Center each stitch weld over edge of Rubber Mount Channel.
12. Reapply undercoating onto bare metal surfaces.
13. Remove hydraulic jack.
14. Lower vehicle and reconnect battery.

ITEM NUMBER	PART NUMBER	DESCRIPTION	QTY PER CROSSMEMBER
01	0377718	ANGLE (11GA x 1.5 x 1.5 x 4")	4
02	0377719	CHANNEL (10GA x 1.75 x 2.50 x 34")	2
03	0377717	ANGLE (11GA x 1.5 x 1.5 14.0")	2



SERVICE INFORMATION DOCUMENT  
STANDARD FLOOR FRAME CROSSMEMBER  
REINFORCEMENT INST'L  
(CROSSMEMBER ONLY)

SID\_2004-22  
Revision:  
Date: 09/10/04

 <b>CHAMPION</b> BUS INC. — A DEDICATED COMPANY —	<b>SERVICE INFORMATION DOCUMENT</b> <b>FLOOR FRAME CROSSMEMBER &amp; RISER</b> <b>REINFORCEMENT WELD</b> <b>(CROSSMEMBER &amp; RISER)</b>	SID_2004-23 Revision: Date: 09/10/04
--	--	--

**Purpose:**

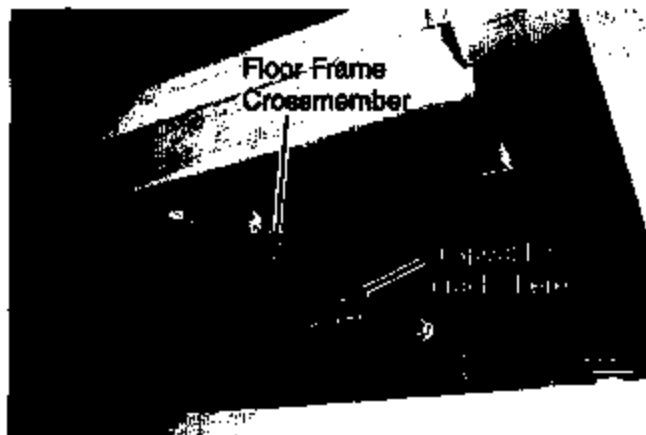
To add structural strength to cracked floor frame crossmembers.

**Perform the Following:**
 **REMOVE OR DISCONNECT**

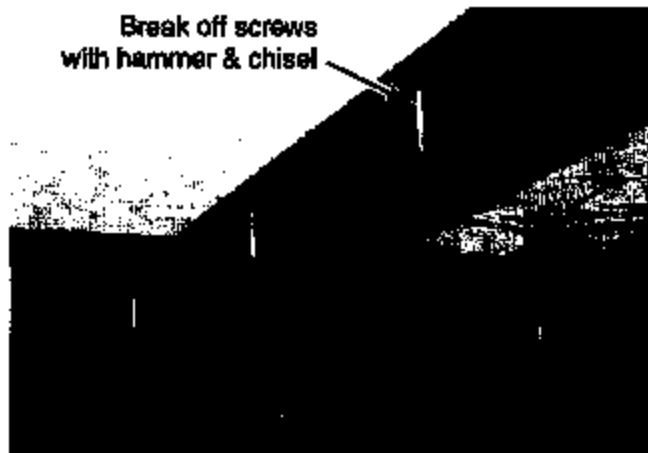
1. Drive vehicle onto lift.
2. Disconnect battery.
3. Raise vehicle and prep areas for weld. Remove any foam insulation and/or undercoating material from areas to be welded.

 **INSPECT**

4. Inspect Floor Frame Crossmembers for cracks at locations shown in photo.
5. With hammer and chisel knockoff screws to provide clearance for channel [Item 1]


 **ADJUST**

6. Position hydraulic jack or other similar tool under vehicle's cage and adjust back to level. Leave jack in place until repairs are completed.





**CHAMPION**  
BLUE INC.  
— A TRUCKCORP COMPANY —

**SERVICE INFORMATION DOCUMENT  
FLOOR FRAME CROSSMEMBER & RISER  
REINFORCEMENT WELD  
(CROSSMEMBER & RISER)**

SID\_2004-23  
Revision:  
Date: 09/10/04



**INSTALL OR CONNECT**

7. Install Channel [Item 2] into Floor Frame Crossmember, clamp to hold position. On bottom edge only apply 1-inch long stitch welds space at 6-inches apart to secure..
8. Position 4" long angle piece [Item 1] onto top edge of previously installed channel and butt up against Floor Frame End Cap. Clamp to hold position and apply 1" long stitch welds to secure.
9. Install second 4" long angle piece [Item 2] 8" inboard from previously installed angled piece, clamp to hold position and apply 1" long stitch welds to secure.
10. Install 14" long angled piece [Item 3] onto Channel's [Item 1], top edge, align so it's inboard edge overhangs Channel's inboard edge by 2". Apply 1" long stitch welds to secure.
11. Apply two 2" long stitch welds to Channel [Item 1]. Center each stitch weld over edge of Rubber Mount Channel.
12. Reapply undercoating onto bare metal surfaces.
13. Remove hydraulic jack.
14. Lower vehicle and reconnect battery.

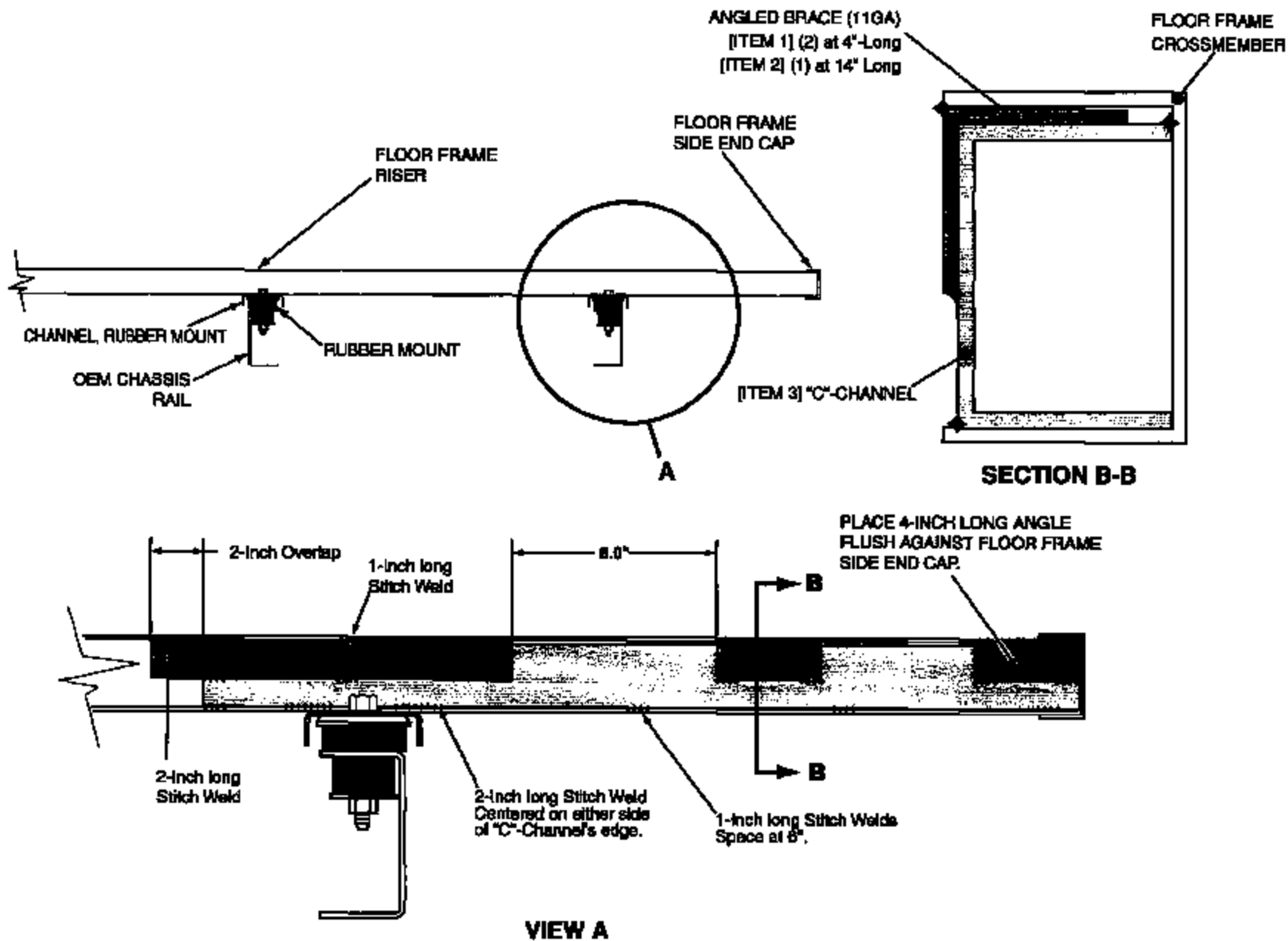
ITEM NUMBER	PART NUMBER	DESCRIPTION	QTY PER CROSSMEMBER
01	0377718	ANGLE (11GA x 1.5 x 1.5 x 4"	4
02	0377719	CHANNEL (10GA x 1.75 x 2.50 x 34")	2
03	0377717	ANGLE (11GA x 1.5 x 1.5 14.0"	2



**CHAMPION**  
BUS INC.  
— THE MOTOR COMPANY —

**SERVICE INFORMATION DOCUMENT**  
**FLOOR FRAME CROSSMEMBER & RISER**  
**REINFORCEMENT WELD**  
**(CROSSMEMBER & RISER)**

**SID 2004-23**  
**Revision:**  
**Date: 09/10/04**





**Purpose:**

To add structural strength to cracked floor frame risers.

**Perform the Following:**



**INSTALL OR CONNECT**

1. Install Extension Bracket (Part #0377575) on top of OEM Puck Mount with bottom flange's edge facing inboard. Align slot in bracket to hole in puck mount and push bracket's vertical flange up against Chassis Frame Rail.
2. Reinstall OEM Puck Mount's Bolt and Nut and tighten to 52 ft. lbs to secure.
3. Clamp Extension Bracket's vertical flange to Chassis Frame Rail and Plug and Stitch weld to secure.
4. Align Reinforcement Plate [Part No. 0377678] to front edge of Rear Floor Frame Riser, clamp, and weld according to (View B). Repeat for Front Floor Frame Riser with the exception of align plate to rear edge of Front Floor Frame Riser.



**IMPORTANT**

**PERFORM THE NEXT PROCEDURES ONLY IF THE REAR FLOOR FRAME RISER'S REAR EDGE IS NOT ALIGNED FLUSH TO THE VEHICLE'S BACKWALL FRAME'S REAR EDGE.**



**INSTALL OR CONNECT**

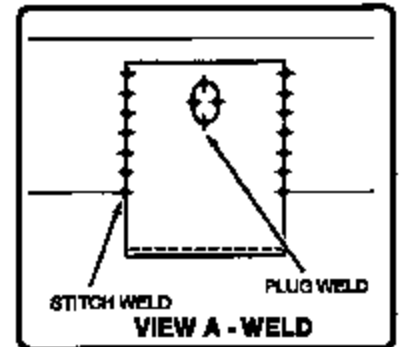
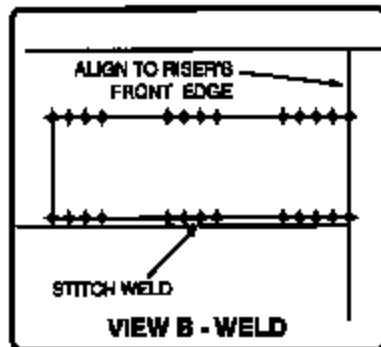
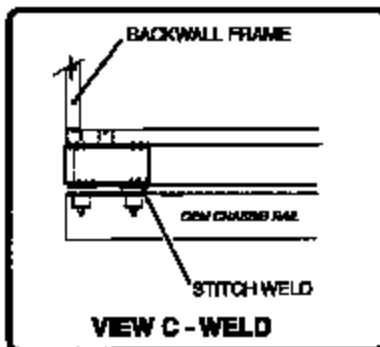
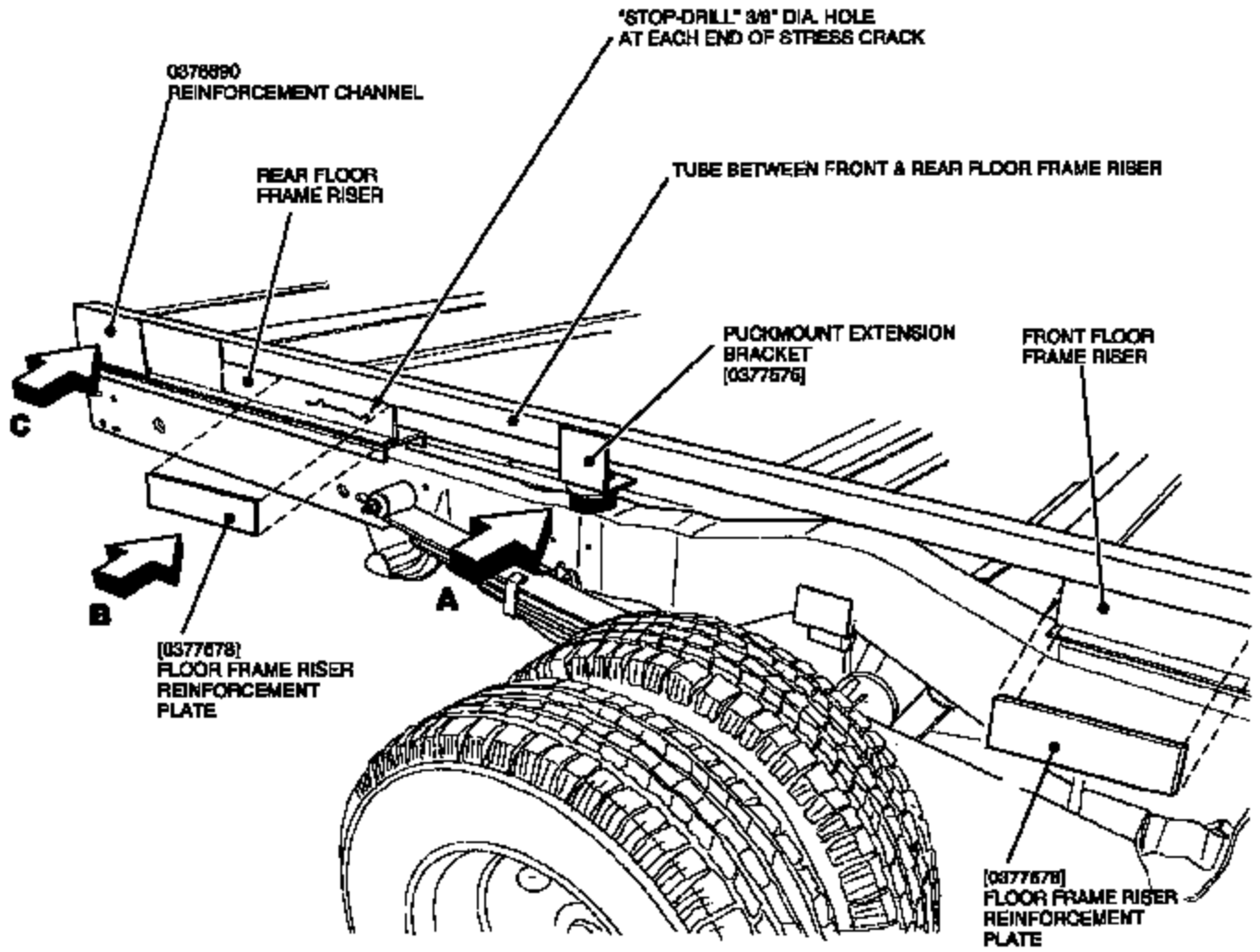
1. Install Rear Reinforcement Channel [Part No. 0376690] into Rear Floor Frame Riser and align it's rear edge with rear of vehicle's Backwall Frame. (Refer to View C). Clamp to hold position.
2. Apply 1" long stitch welds to secure.



**CHAMPION**  
BUS INC.  
A T. BORGWARNER COMPANY

**SERVICE INFORMATION DOCUMENT**  
**FLOOR FRAME CROSSMEMBER & RISER**  
**REINFORCEMENT WELD**  
**(CROSSMEMBER & RISER)**

SID\_2004-23  
Revision:  
Date: 09/10/04





## INSTALL OR CONNECT

1. At both sides of Floor Frame Riser, position one (1) 45°-angled piece of 3/16" Flat Stock between side of Puck Mount Channel and bottom of Floor Frame Crossmember.
2. With gloved hand apply push up on bracket for a tight fit and tack weld to hold position.
3. Apply a full seam weld to secure at both upper and lower edges.
4. Repeat operations 3 to 5 times depending on length of vehicle.

