

MFD BY FCA US LLC  
DATE OF MFR (BUILT): 3-19

GAWR FRONT: 1225 KG 2700 LB  
17X7.5

GAWR REAR: 1361 KG 3000 LB  
17X7.5

GWR: 2477 KG 5460 LB

245/75R17 112S TIRES

250 KPA ( 36 PSI) COLD

245/75R17 112S TIRES

250 KPA ( 36 PSI) COLD

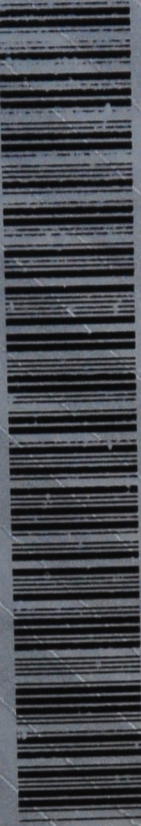
GWR:

WITH

RIMS AT

WITH

RIMS AT



THIS VEHICLE CONFORMS TO ALL APPLICABLE U.S.A. FEDERAL MOTOR VEHICLE SAFETY AND THEFT PREVENTION STANDARDS IN EFFECT ON THE DATE OF MANUFACTURE SHOWN ABOVE.

MPV VIN: 1C4HJXDNIKW618779 TYPE: MPV  
VEHICLE MADE IN U.S.A. PAINT: PH7 RIM: 8709

REAR 3  
SHOULD NEVER EXCEED

SPARE  
245/75R17 112S  
250 kPa / 36 PSI

KW618779